

MH 5650-239
 2437 N. Poplar
 Approx MH depth = 16.7 ft

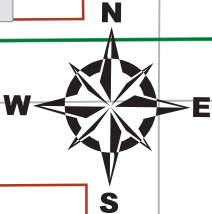
Remove 377 lf of 8" Pipe
 Install 377 lf of 8" Pipe

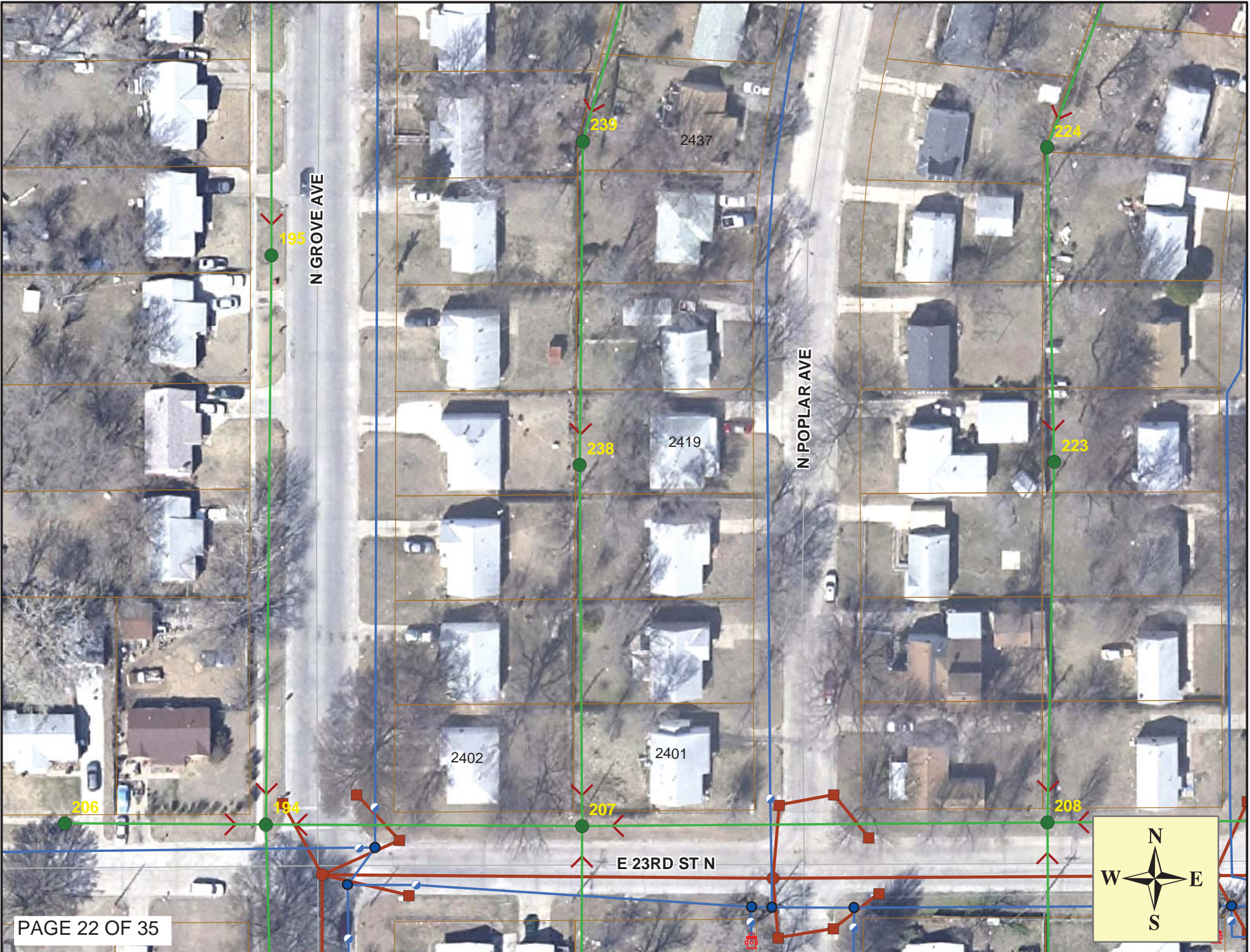
MH 5650-207
 Approx MH depth = 8.6 ft

Estimated 12 Service Reconnections (4")
 Estimated 1 Construction Entrance
 Estimated 30 sy Erosion Control Mat
 Estimated 20 lf Back of Curb Protection
 Easement is 16' wide (8' on each side)

MH 5650-238
 2419 N. Poplar
 Replace MH Frame & Cover
 Adjust MH to Grade (12" to 16")
 Located 2' E of rear fence
 and 17' N of south fence
 Depth not measured

SITE 3





Television Inspection Master Report

11/25/2009

7:34 AM

US Structure: 5650-239 2437 N POPLAR AVE Date Insp: 10/8/2009 Basin: EC02D
 DS Structure: 5650-238 2419 N POPLAR ST Dir Televised: Downstream To Upstream

Pipe Information

Shape: Round Length Status: Project No. : G-027
 Dia/Ht: 8 Material: VCP Index:
 Length: 176.6 Slope: 0.005 Surface:

Inspection Information

Crew: 692 Percent Full: Tape ID: DVD #0523
 Weather: Rainy Purpose: TV Existing Line Counter Start:

Obs. #	VTR Counter	Distance	Location	Description	Rating	Obsrvd (gpm)	Ratings			Remain (gpm)
							Est. (gpm)	Struct	Clean	
1		0.0		5650-238 DS Manhole	1	0.000	0	0	0.000	
2419 N POPLAR / TV AGAINST THE FLOW										
2		22.0		Sag begins	2	0.000	2	0	0.000	
3		24.4		Sag / camera submerges	4	0.000	10	0	0.000	
4		36.5		Sag / emerges	1	0.000	1	0	0.000	
5		36.6		Sag ends	1	0.000	1	0	0.000	
6		51.5		Break-In Conn	1	0.001	0	0	0.001	
2425 N POPLAR										
7		54.5		Wye Service	1	0.000	0	0	0.000	
2426 N GROVE										
8		115.0		Sealed Off Wye	1	0.000	0	0	0.000	
9		117.9		PVC Break-In Conn	1	0.001	0	0	0.001	
2432 N GROVE										
10		139.9		Break-In Conn	2	0.002	0	0	0.002	
2431 N POPLAR / poor cond.										
11		163.0		Sealed Off Wye	1	0.000	0	0	0.000	
12		166.0		Sealed Off Wye	1	0.000	0	0	0.000	
13		175.2	5650-239	US Manhole	1	0.000	0	0	0.000	



Television Inspection Master Report

11/25/2009

7:34 AM

US Structure: 5650-238 2419 N POPLAR ST Date Insp: 10/8/2009 Basin: EC02D
 DS Structure: 5650-207 2401 N POPLAR ST Dir Televised: Downstream To Upstream

Information

Shape: Round Project No. : G-027 Dia: 8 Material: VCP Length: 200.2 Slope: 0.003
 Crew: 692 Percent Full: Tape ID: DVD #0523
 Weather: Rainy Purpose: TV Existing Line Counter Start:

Obs. #	VTR Counter	Distance	Location	Description	Rating	Obsrvd (gpm)	Ratings			Remain (gpm)
							Est. (gpm)	Struct	Clean	
1		0.0		5650-207 DS Manhole	1	0.000	0	0	0.000	
	2401 N POPLAR / TV AGAINST THE FLOW									
2		0.0		Material begins as PVC	1	0.000	0	0	0.000	
3		1.0		Material changes to VCP	1	0.000	0	0	0.000	
4		8.7		Crack-Horizontal	2	0.002	2	0	0.002	
5		19.1		Wye Service	1	0.000	0	0	0.000	
	2401 N POPLAR (PVC service line connected to VCP wye - LML)									
6		21.1		PVC Break-In Conn	1	0.001	0	0	0.001	
	2402 N GROVE									
7		22.2		Roots	1	0.002	1	1	0.002	
8		40.2		Crack-Horizontal	3	0.004	5	0	0.004	
9		43.5		Broken Pipe	2	0.008	44	0	0.008	
10		46.5		Broken Pipe	2	0.008	44	0	0.008	
11		58.3		Grease	1	0.000	0	0	0.000	
12		61.6		Grease	1	0.000	0	0	0.000	
13		64.7		Grease	1	0.000	0	0	0.000	
14		68.1		Grease	1	0.000	0	0	0.000	
15		70.8		Broken Pipe	2	0.008	44	0	0.008	
16		79.5		Wye Service	1	0.000	0	0	0.000	
	2407 N POPLAR (PVC service line connected to VCP wye - LML)									
17		82.6		Wye Service	1	0.000	0	0	0.000	
	2408 N GROVE (PVC service line connected to VCP wye - LML)									
18		106.6		Sag begins	2	0.000	2	0	0.000	
19		108.5		Sag	3	0.000	5	0	0.000	
20		117.3		Sag (50%, just above the lens) - LML	1	0.000	1	0	0.000	
21		117.3		Sag ends	1	0.000	1	0	0.000	
22		136.5		Wye Service	1	0.000	0	0	0.000	
	2413 N POPLAR									
23		139.6		Wye Service	2	0.000	0	0	0.000	
	2414 N GROVE									
24		187.7		Wye Service	1	0.000	0	0	0.000	
	2419 N POPLAR									
25		190.6	packed with roots	Wye Service	5	0.000	400	0	0.000	
	2420 N GROVE									
26		199.8		5650-238 US Manhole	1	0.000	0	0	0.000	