

MH 5650-312
 2237 N. Estelle
 Adjust MH to Grade (<6")
 Replace MH Frame & Cover
 Construct Outside Drop
 Est. MH depth = 9.0 ft
 (depth not measured)

MH 5650-255
 Approx MH depth = 7.4 ft

Remove & replace 40 lf of
 Concrete Pavement (incl curb/gutter)
 Install 40 lf of Flowable Fill
 (no water located in Audrey St.)

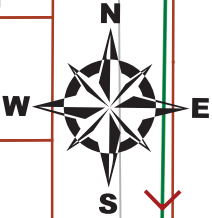
Remove 523 lf of 8" Pipe
 Install 523 lf of 8" Pipe

Remove & replace 9 lf of
 Concrete Parking Lot

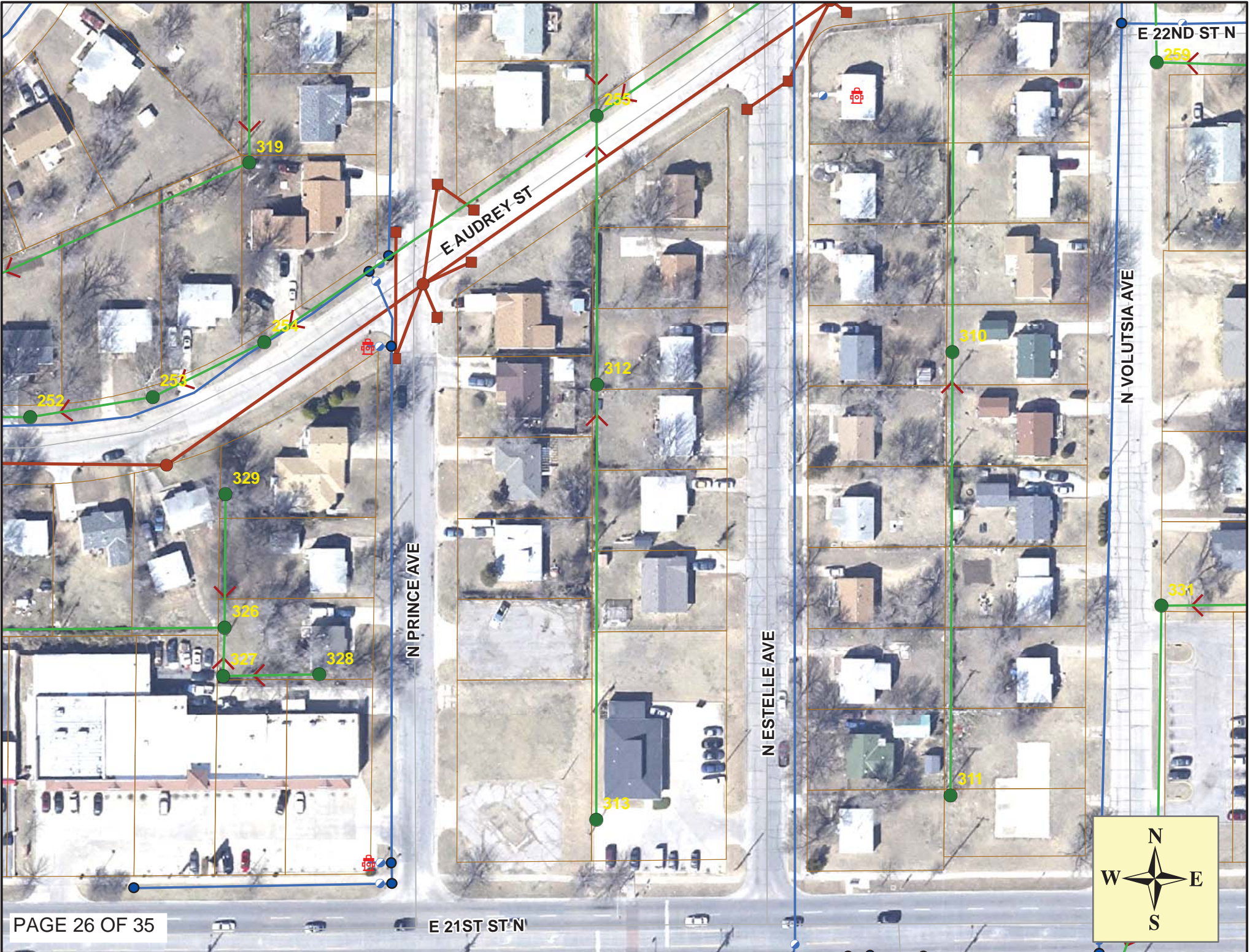
MH 5650-313
 2720 E. 21st St. N.
 Approx MH depth = 13.3 ft

Estimated 10 Service Reconnections (4")
 Estimated 1 Service Reconnection (6")
 Estimated 20 lf Back of Curb Protection
 Estimated 30 sy Erosion Control Mat
 Estimated 1 Construction Entrance
 Estimated 1 Curb Inlet Protection
 Estimated 20 lf Silt Fence
 Easement is 16' wide (8' on each side)

SITE 4



21st Street North





Television Inspection Master Report

1/15/2010

9:46 AM

US Structure: 5650-313 2720 E 21ST ST Date Insp: 1/5/2010 Basin: EC02D
 DS Structure: 5650-312 2237 N ESTELLE ST Dir Televised: Upstream To Downstream

Pipe Information

Project No. : G-025 Dia/Ht: 8 Material: VCP Length: 324.2 Slope: 0.398
 Crew: 692 Weather: Cloudy Purpose: TV Existing Line Tape ID: DVD #0547

Obs. #	VTR Counter	Distance	Location	Description	Rating	Ratings			Remain (gpm)
						Obsrvd (gpm)	Est. (gpm)	Struct Clean	
1		0.0	5650-313 in concrete parking lot	US Manhole	1				
2		17.2		Sealed Off Wye	1				
3		26.2	VACANT LOT	Wye Service	1	(not sealed at the main) - LML			
4		53.5	2720 E 21ST N	Break-In Conn	1				
5		59.9	VACANT LOT	Break-In Conn	1	(not sealed at the main) - LML			
6		78.2		Sealed Off Wye	1				
7		88.9		Broken Pipe	2				
8		95.2		Crack-Horizontal	2				
9		113.3		Crack-Horizontal / roots	2				
10		124.7		Debris	5	large piece of tile - LML			
11		128.8		Crack-Horizontal	4				
12		132.0		Broken Pipe	2				
13		136.4		Sealed Off Wye	1				
14		137.7		Broken Pipe	3				
15		140.9		Broken Pipe	3				
16		147.2		Broken Pipe	3				
17		150.1		Crack-Horizontal	2				
18		154.5		Sealed Off Wye / roots	2	Ball of roots / can't see sealoff - LML			
19		156.2		Broken Pipe	3				
20		159.3		Broken Pipe	3				
21		162.5		Crack-Horizontal	2				
22		165.2		Broken Pipe	3				
23		168.5		Crack-Horizontal	3				
24		171.5		Broken Pipe	3				
25		177.3		Broken Pipe	3				
26		180.7		Broken Pipe	5				
27		189.3		Crack-Horizontal	2				
28		196.9	2219 N ESTELLE	Wye Service	1				



Television Inspection Master Report

1/15/2010

9:46 AM

US Structure: 5650-313 2720 E 21ST ST Date Insp: 1/5/2010 Basin: EC02D
 DS Structure: 5650-312 2237 N ESTELLE ST Dir Televised: Upstream To Downstream

29	204.7		Crack-Horizontal	2	
30	210.5		Crack-Horizontal	1	
31	214.7	2218 N PRINCE	Wye Service	4	heavy roots - LML
32	219.2		Roots	2	
33	252.1	2225 N ESTELLE	PVC Break-In Conn	1	
34	255.7		Sealed Off Wye	1	
35	258.2		Roots	1	
36	258.7		Crack-Horizontal	2	
37	261.3		Roots	1	
38	261.8		Broken Pipe	3	
39	264.4		Roots	2	
40	265.0	2224 N PRINCE	Break-In Conn	4	PVC service to VCP tap / broken pipe - LML
41	267.5		Broken Pipe	3	
42	278.0		Sealed Off Wye	1	
43	288.5		Crack-Horizontal	3	
44	294.4		Broken Pipe	2	
45	297.5		Broken Pipe	2	
46	300.7		Broken Pipe	2	
47	308.1	2231 N ESTELLE	Wye Service	5	heavy roots - LML
48	309.2		Broken Pipe	4	broken in invert -LML
49	312.4		Crack-Radial	5	
50	315.6		Broken Pipe	4	broken in invert -LML
51	315.6		Roots	4	
52	317.5	5650-312	DS Manhole	1	inside drop - LML



Wichita Water Utilities – Connect With Us!

Television Inspection Master Report

1/15/2010

9:46 AM

US Structure: 5650-312 2237 N ESTELLE ST Date Insp: 1/12/2010 Basin: EC02D
 DS Structure: 5650-255 2300 N PRINCE AVE Dir Televised: Upstream To Downstream

Pipe Information

Project No. : G-025 Dia/Ht: 8 Material: VCP Length: 200.0 DVD #0547

Obs. #	VTR Counter	Distance	Location	Description	Rating	Obsrvd (gpm)	Est. (gpm)	Ratings		Remain (gpm)
								Struct	Clean	
1		0.0		5650-312 / US Manhole	3					
2		3.0		Roots	2					
3		6.0		Debris	1	Water is standing in pipe - LML				
4		8.5		Roots	2	Poor grade				
5		11.6		Roots	1					
6		15.4	2230 N PRINCE	Wye Service	2					
7		16.5		Grease	2					
8		17.6		Roots	2					
9		21.4	2237 N ESTELLE	Break-In Conn	4	Heavy roots - LML				
10		23.6		Roots	1					
11		26.6		Roots	1					
12		29.7		Roots	1					
13		33.4		Crack-Horizontal	2					
14		35.6		Grease	3					
15		38.1		Grease	3					
16		41.3		Crack-Radial	2					
17		44.5	2236 N PRINCE	Break-In Conn	2					
18		47.7		Crack-Horizontal	3					
19		50.9		Crack-Horizontal	2					
20		54.1		Sealed Off Wye	1					
21		57.3		Grease	2	Grease collects on pipe - LML				
22		60.5		Grease	3					
23		63.7		Grease	4					
24		66.9	2243 N ESTELLE	Break-In Conn	3	Roots				
25		70.1		Roots	4					
26		73.3		Broken Pipe	3					
27		76.5		Roots	4					
28		79.7		Broken Pipe	4	Heavy roots & missing pipe - LML				
29		82.9		Broken Pipe	5	Cavity / Inspection stopped - LML				

REVERSE SETUP:

1		0.0		5650-255 / DS Manhole	1	TV AGAINST THE FLOW				
2		50.8		Broken Pipe	5	Heavy roots - LML				
3		61.2	2249 N ESTELLE / PVC	Break-In Conn	1					
4		64.2	2236 N PRINCE? / possibly not active	Wye Service	5	Faces 2236 Prince, ball of roots - LML				
5		81.7	Inspection stopped	Sealed Off Wye	1					

Cavity was repaired by Sewer Maintenance in March, 2010. Televising was never completed. - LML