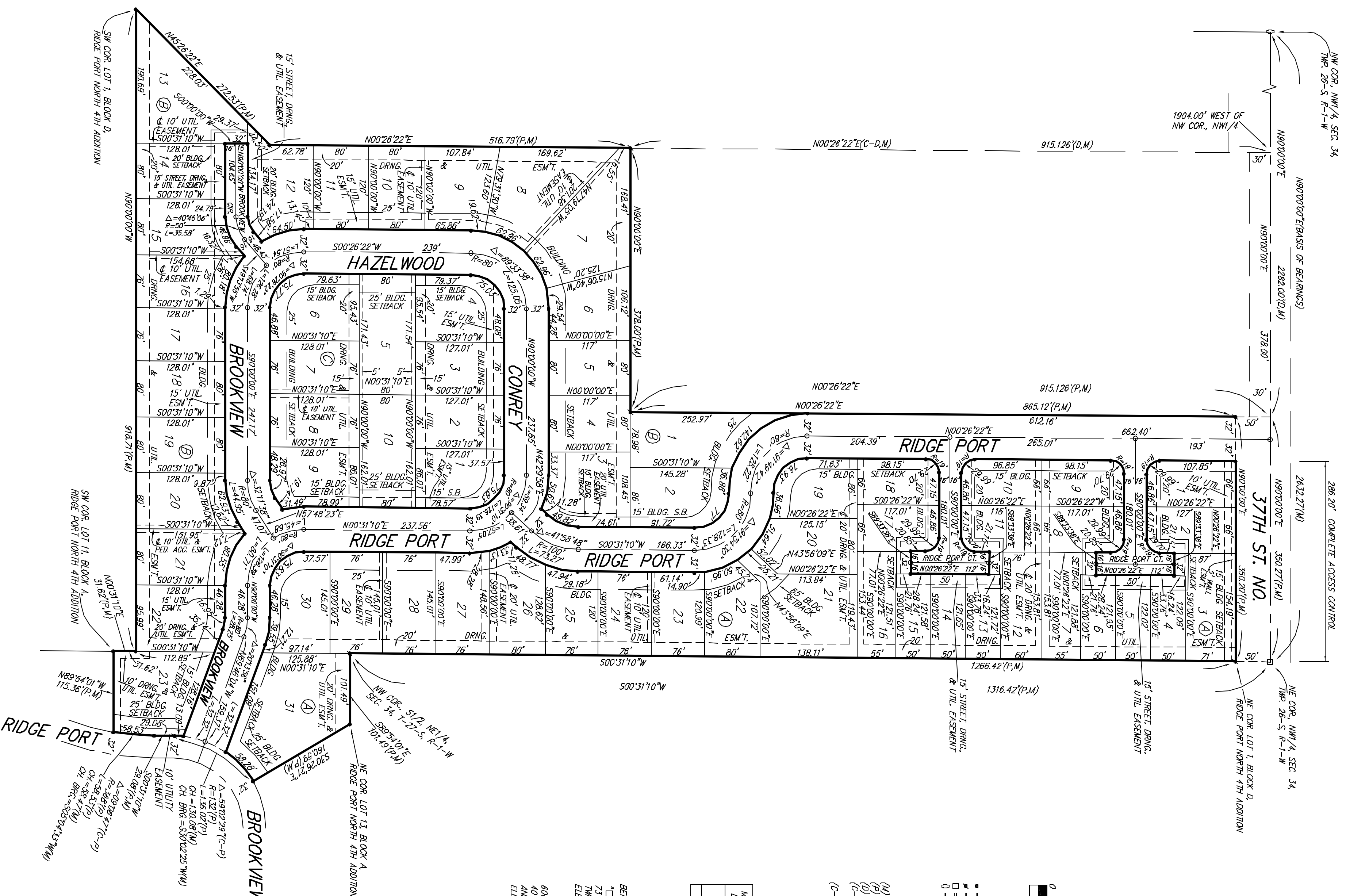
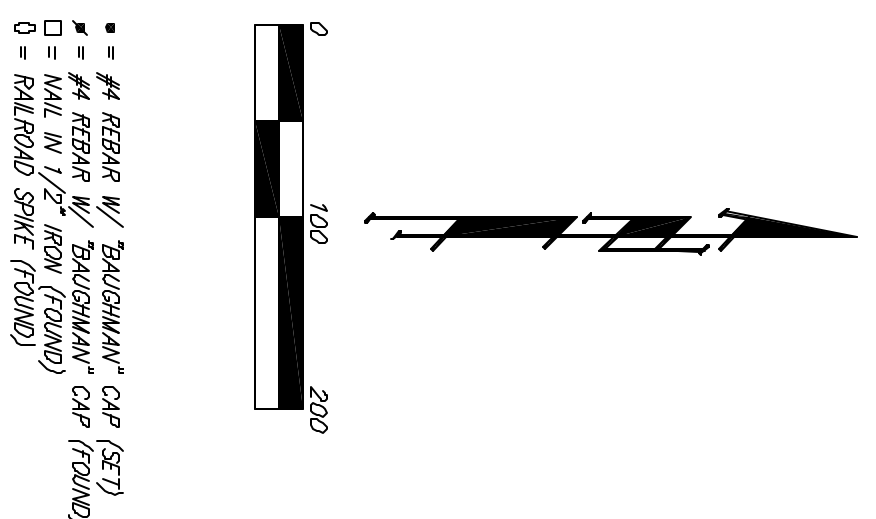


# RIDGE PORT NORTH 5TH ADDITION

WICHITA, SEDGWICK COUNTY, KANSAS



NOTE:  
A master grading plan for drainage has been developed for this subdivision and is on file with the City of Wichita, Kansas. All drainage easements, rights-of-way, or reserved easements of the City of Wichita, Kansas. No obstructions which impede the flow of this drainage system shall be allowed.



- = NEAR W/ BAUGHMAN CAP (SET)
- = WALL IN 1/2" FROM (FOUND)
- = BALCONY SHAPE (FOUND)
- (M) = MEASURED
- (P) = PLATTED
- (D) = DESCRIBED
- (C-D) = CALCULATED PER DESCRIBED INFO.

ANNUAL BUILDING PAD ELEVATIONS FOR LOWEST OPENING TO THE STRUCTURES			
LOT	BLOCK	CITY DATUM HEIGHT	FEET
13-23	B	FIELD	1288.4

BENCHMARK:  
T1 ON HIGHLAND OF R.C.A.C.  
77' N OF SE COR. SEC. 24,  
TWP. 26-S, R-1-W  
ELEV. = 1442.2 CITY DATUM (131.02 M.S.L.)

600 STEP BENCH IN HD. 15' N. &  
40' E. OF THE INTERSECTION OF 34TH ST. N.  
ELEV. = 1443.0 CITY DATUM (131.40 M.S.L.)

State of Kansas) SS  
Sedgwick County) We, Baughman Company, P.A., Surveyors in  
attested county and state do hereby certify that we have surveyed and  
platted "RIDGE PORT NORTH 5TH ADDITION", Wichita, Sedgwick County,  
Kansas and that the accompanying plat is a true and correct exhibit of  
the property surveyed, described as and being a replat of all of Lot 1,  
Block D, and all of Lots 11, 12, and 13, Block A, all as platted in Ridge  
Port North 4th Addition, Wichita, Sedgwick County, Kansas.  
All being situated in the NW1/4 and NE1/4 of Sec. 34,  
Twp. 26-S, R-1-W of the 6th P.M., Sedgwick County, Kansas.  
Existing public easements and dedications  
being vacated by virtue of K.S.A. 12-512(b).  
Baughman Company, P.A.

Michael G. Conrey, Surveyor

Know all men by these presents that we,  
the undersigned, have caused the land in the surveyor's certificate to be  
platted into Lots, Blocks, and Streets, to be known as RIDGE PORT  
NORTH 5TH ADDITION, Wichita, Sedgwick County, Kansas. The utility  
easements are hereby granted as indicated for the construction and  
maintenance of all public utilities. The drainage and utility easements  
are hereby granted as indicated for drainage purposes and for the  
construction and maintenance of all public utilities. The street, drainage,  
and utility easements are hereby granted as indicated for street related  
purposes, for drainage purposes, and for the construction and  
maintenance of all public utilities. The utility and pedestrian access  
easement is hereby granted as indicated for the construction and  
maintenance of all public utilities and for pedestrian access to or from  
Reserve "A", Ridge Port North 4th Addition. The streets are hereby  
dedicated to and for the use of the public. Access controls shall be as  
depicted on the face of the plat and are hereby granted to the City of  
Wichita, Kansas. The Minimum Building Pad Elevations for the lowest  
opening to the structures shall be as indicated on the face of the plat.

Ridge Port Group, LLC,  
a Kansas limited liability company

Joy W. Russell, Manager  
Kevin M. Mullin, President of  
Ritche Associates, Inc.

State of Kansas) SS The foregoing instrument acknowledged before me,  
Sedgwick County) this \_\_\_\_\_ day of \_\_\_\_\_, 2002, by Joy W. Russell, Manager of  
Ridge Port Group, LLC, a Kansas limited liability company, on behalf of  
the limited liability company.

Notary Public

State of Kansas) SS The foregoing instrument acknowledged before me,  
Sedgwick County) this \_\_\_\_\_ day of \_\_\_\_\_, 2002, by Kevin M. Mullin, President of  
Ritche Associates, Inc., as Manager of Ridge Port Group, LLC, a Kansas  
limited liability company, on behalf of the limited liability company.

Notary Public

This plat of "RIDGE PORT NORTH 5TH  
ADDITION", Wichita, Sedgwick County, Kansas has been submitted to and  
approved by the Wichita-Sedgwick County Metropolitan Area Planning  
Commission, Wichita, Kansas.  
Dated this \_\_\_\_\_ day of \_\_\_\_\_, 2002.  
Wichita-Sedgwick County Metropolitan Area Planning Commission

J. D. Michaelis, Chair  
Michael E. Lindback, Acting Secretary

This plat approved and all dedications  
shown hereon accepted by the City Council of the City of Wichita,  
Kansas this \_\_\_\_\_ day of \_\_\_\_\_, 2002.  
At the direction of the City Council

Chris Cherchas, City Manager  
Pat Burnett, City Clerk  
Tricia L. Robella, L.S. #12146  
Deputy County Surveyor  
Sedgwick County, Kansas

Renewed in accordance with K.S.A. 58-2005  
on this \_\_\_\_\_ day of \_\_\_\_\_, 2002.

Entered on transfer record this \_\_\_\_\_ day  
of \_\_\_\_\_, 2002.  
Dan Broeze, County Clerk

State of Kansas) SS This is to certify that this plat has been  
Sedgwick County) filed for record in the office of the Register of Deeds this \_\_\_\_\_ day  
of \_\_\_\_\_, 2002 at \_\_\_\_\_ o'clock \_\_\_\_\_ M., and is duly recorded.  
Bill Week, Register of Deeds  
Linda Kizette, Deputy

We the undersigned holders of a mortgage on the  
above described property, do hereby consent to this plat of "RIDGE PORT  
NORTH 5TH ADDITION", Wichita, Sedgwick County, Kansas.  
INTRUST Bank, N.A.

State of Kansas) SS The foregoing instrument acknowledged before  
Sedgwick County) for me, this \_\_\_\_\_ day of \_\_\_\_\_, 2002, by \_\_\_\_\_,  
(NAME) of INTRUST Bank, N.A., on behalf of the bank.

Notary Public

