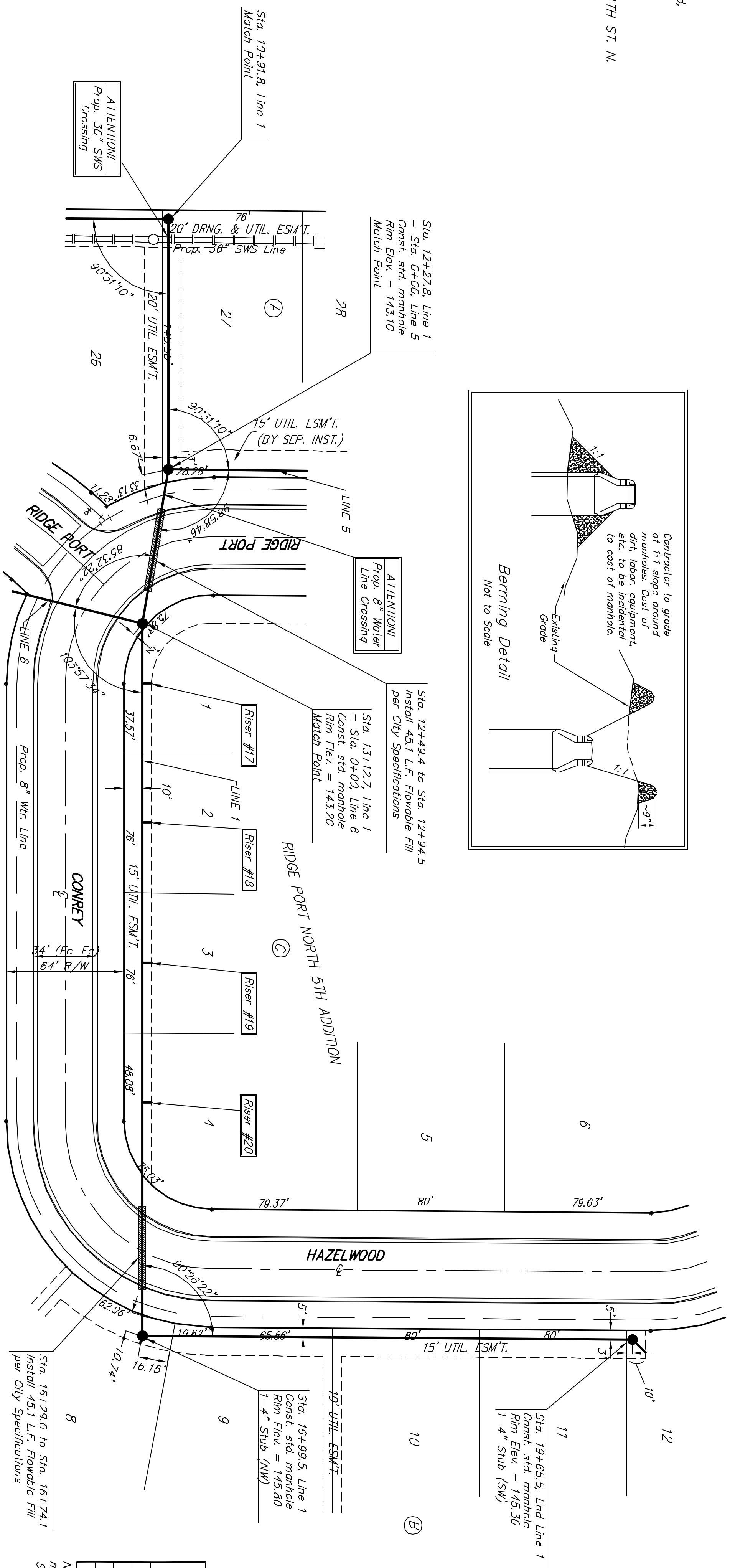
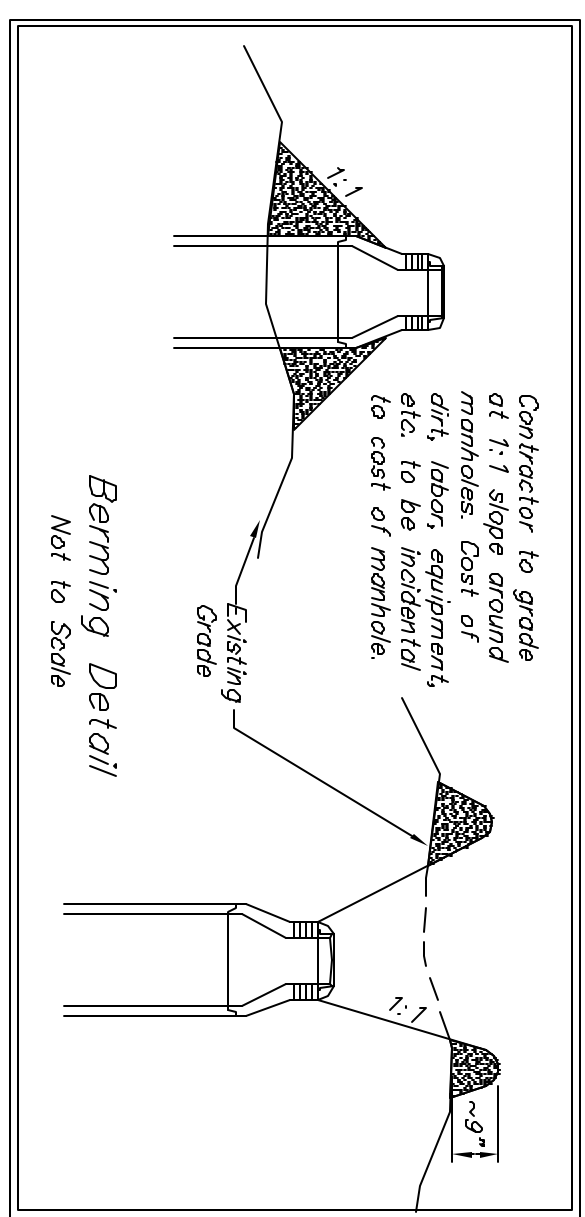


BENCHMARK:
 "C" ON HUBBARD OF R.C.B.C.,
 73 W. OF SE COR. SET/4, SEC. 28
 TWP. 26-S, R-1-W
 ELEV. = 144.22 CITY DATUM
 604 STEP BENCH IN H.L.P. 15' N. &
 40 E. OF THE INTERSECTION OF 34TH ST. N.
 AND EISENHOWER
 ELEV. = 144.00 CITY DATUM



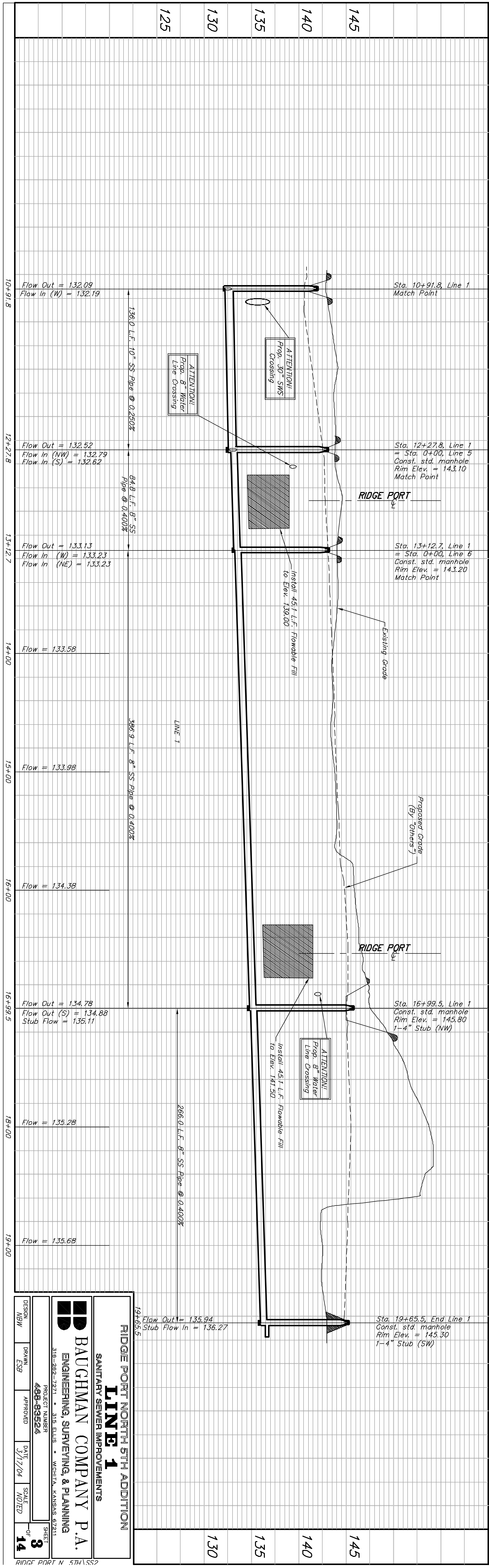
The contractor shall be required to backfill manholes and pipe with flowable fill from Sta. 13+12.7 to Sta. 19+65.5. Line 1 including locations where flowable fill is called out. All costs shall be subsidiary to pipe cost.

SEWER SERVICE TABLE

NUMBER	TYPE	LOCATION		STATION	DIRECTION	FOR INFORMATION ONLY	
		LOT NO.	LINE NO.			APPROXIMATE LENGTH	4" PIPE
17	B" X 4" Tee Saddle	1	C	13+45.1/14	5.5'	5.0'	5.0'
18	B" X 4" Tee Saddle	2	C	14+20.8/14	5.5'	5.0'	5.0'
19	B" X 4" Tee Saddle	3	C	14+98.8/14	5.5'	5.0'	5.0'
20	B" X 4" Tee Saddle	4	C	15+72.8/14	5.5'	5.0'	5.0'

NOTE: Vertical Riser Pipe shall be extended to 2' minimum above ground water elevation and 4' maximum below proposed ground elevation. Riser construction shall be according to method "B". See Detail, sheet 10.

Scale: 1" = 40' Horizontal
 1" = 5' Vertical
 ● = Iron



RIDGE PORT NORTH 5TH ADDITION
LINE 1
 SANITARY SEWER IMPROVEMENTS

BAUGHMAN COMPANY P.A.
 ENGINEERING, SURVEYING, & PLANNING
 318-282-7271 • 318 ELLIS • WICHITA, KANSAS 67211

PROJECT NUMBER: **488-85224**
 SHEET: **3** OF **14**

DESIGN: **MBW** DRAWN: **CSB** APPROVED: DATE: **3/17/04** SCALE: **NOTED**