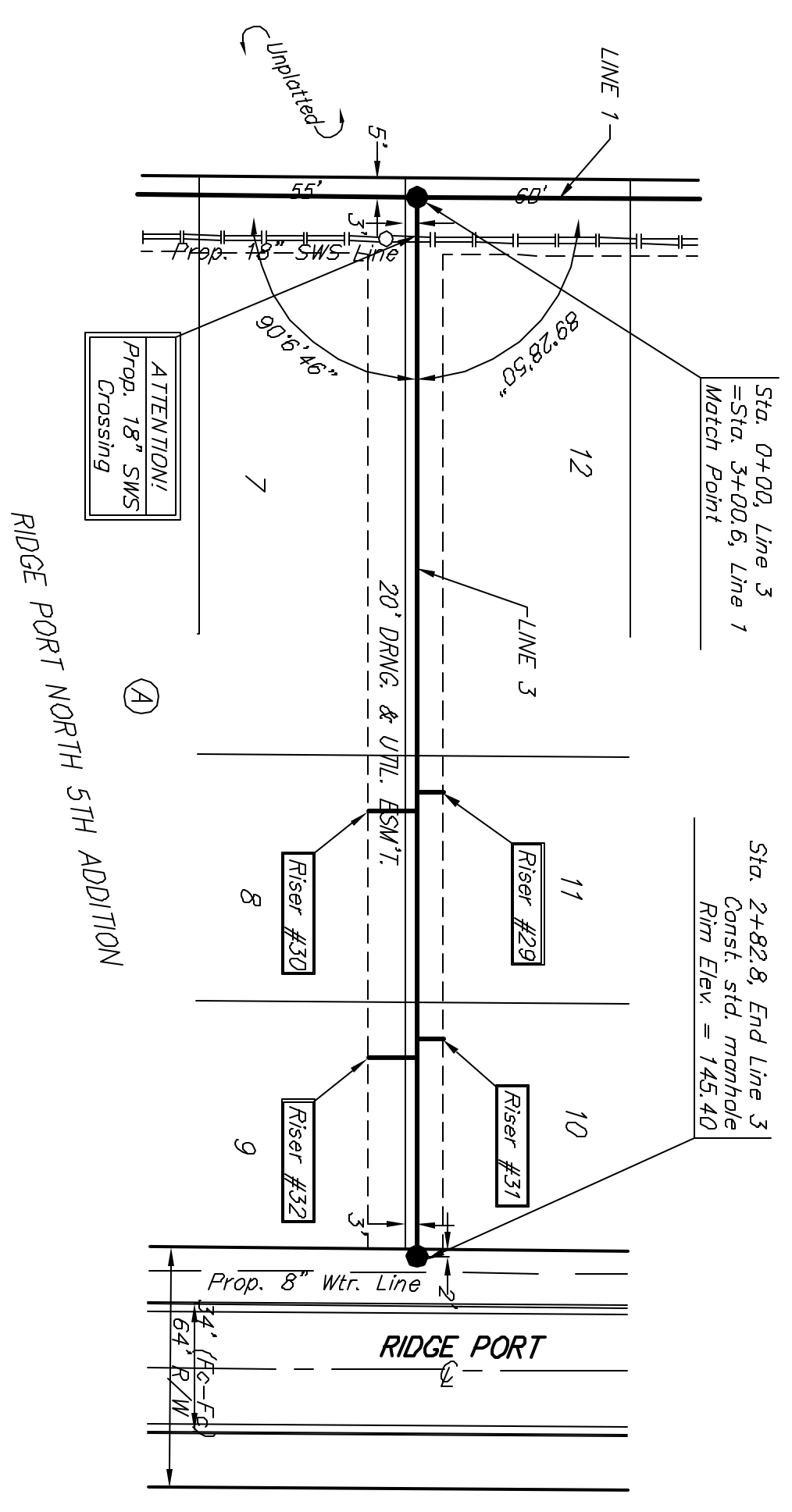
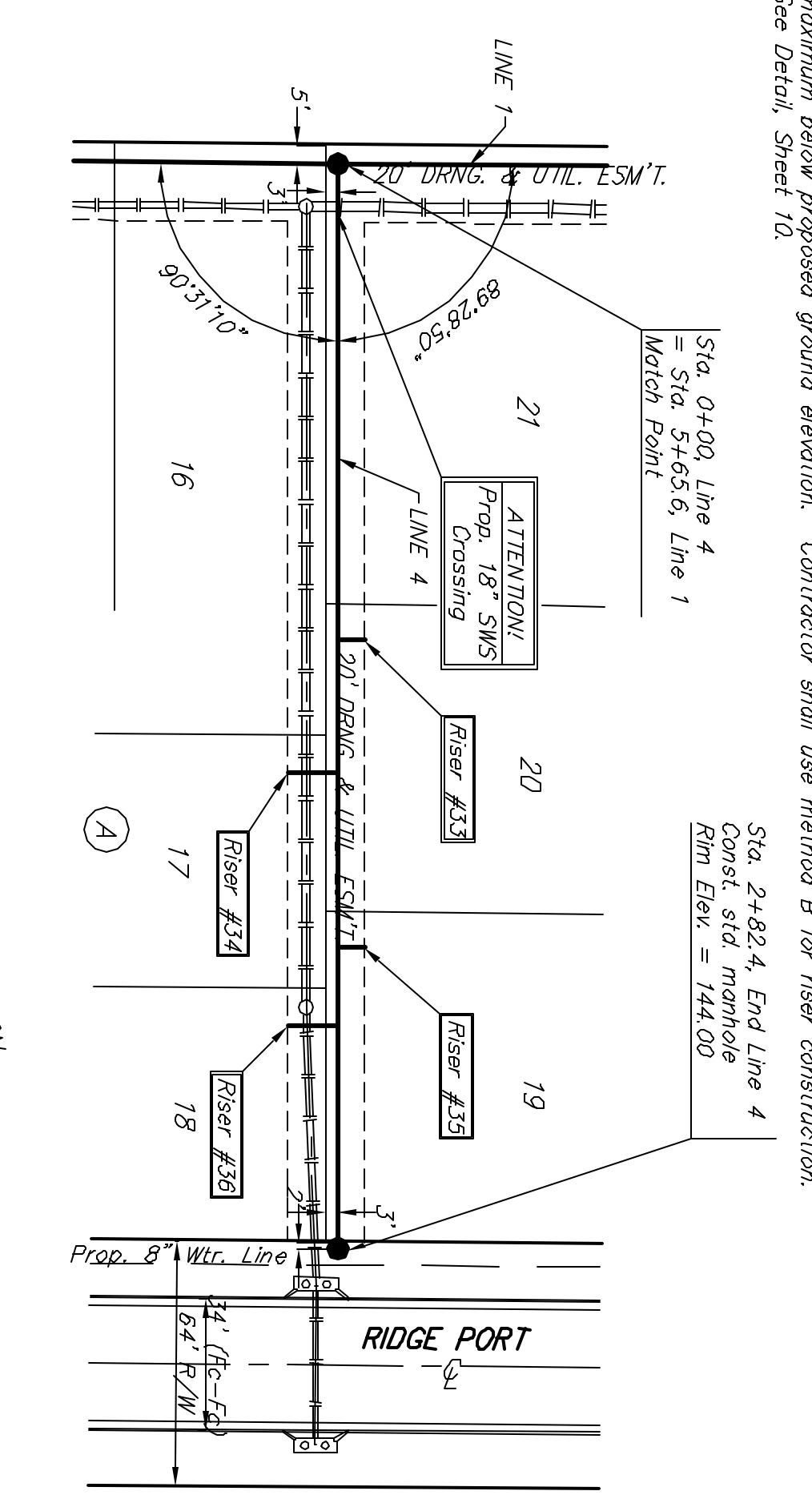


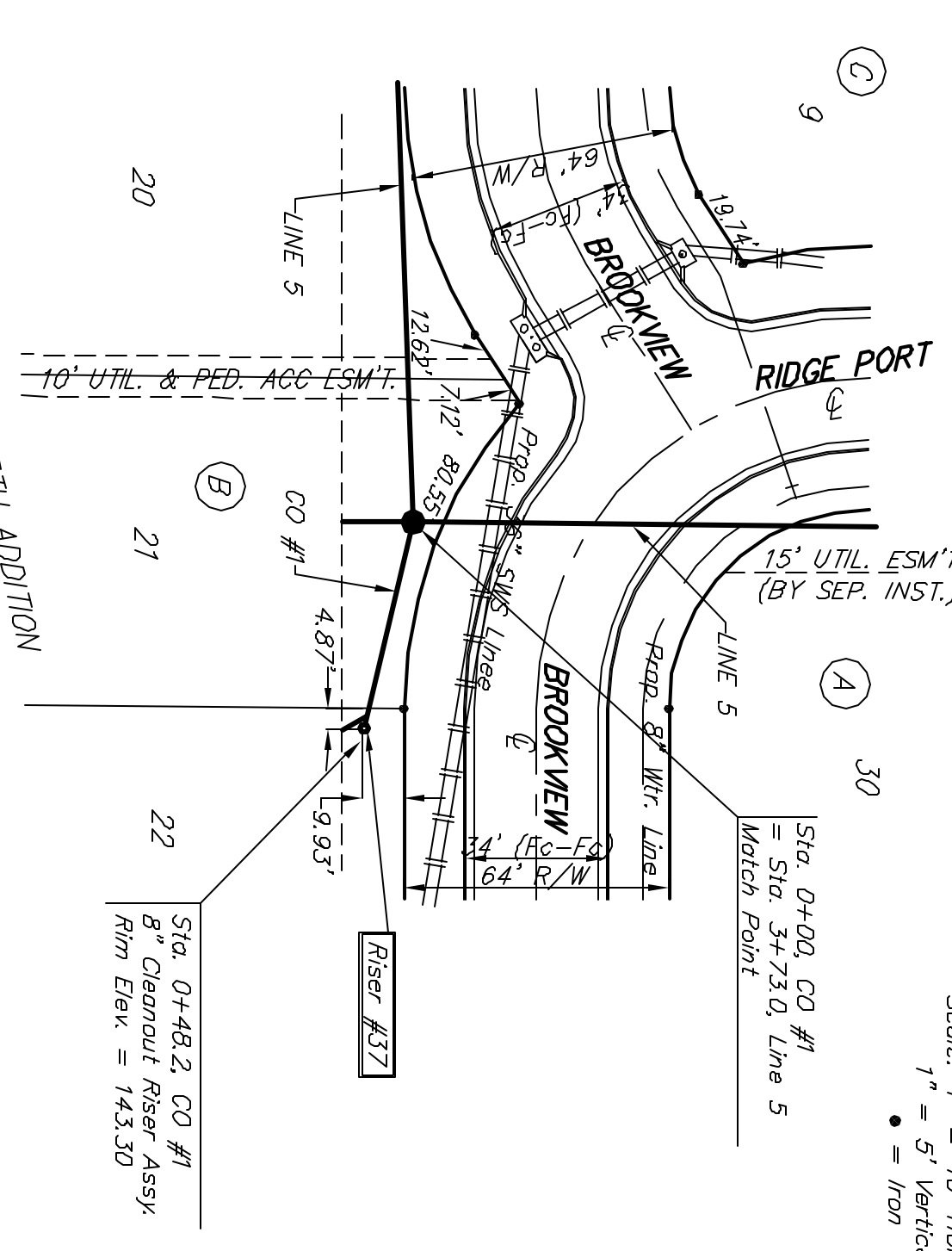
BENCHMARK:
 "C" ON HUBBARD OF R.C.B.C.
 73' N. OF ST. COR. SE 1/4 SEC. 28
 T2S, R-1-W
 ELEV. = 1442.21 CITY DATUM
 604 STEP BENCH IN H.P. 15' N. &
 40' E. OF THE INTERSECTION OF 34TH ST. N.
 AND EISENHOWER
 ELEV. = 144.00 CITY DATUM



Scale: 1" = 40' Horizontal
 1" = 5' Vertical
 ● = Iron



Scale: 1" = 40' Horizontal
 1" = 5' Vertical
 ● = Iron



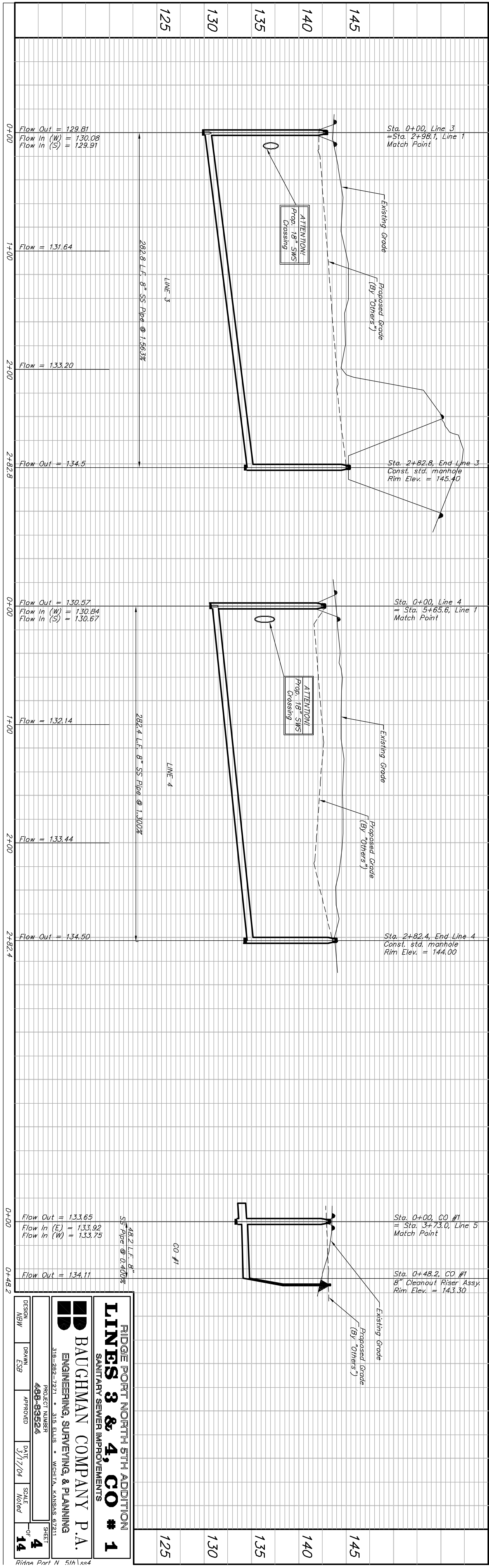
Scale: 1" = 40' Horizontal
 1" = 5' Vertical
 ● = Iron

The contractor shall be required to
 sackfill trench with same as CO #1
 and backfill with same as CO #1.
 All costs shall be subsidiary to pipe cost.

SEWER SERVICE TABLE

NUMBER	TYPE	LOCATION		STATION\ DIRECTION	APPROXIMATE LENGTH 4" PIPE	
		LOT NO.	LINE NO.		VERTICAL	HORIZONTAL
29	8" X 4" Tee Saddle	11	4	1+59/LL	7'	13'
30	8" X 4" Tee Saddle	8	4	1+64/RL	7'	13'
31	8" X 4" Tee Saddle	10	4	2+25/LL	7'	13'
32	8" X 4" Tee Saddle	9	4	2+30/RL	7'	13'
33	8" X 4" Tee Saddle	20	4	1+24/LL	7'	13'
34	8" X 4" Tee Saddle	17	4	1+58/RL	5'	7'
35	8" X 4" Tee Saddle	19	4	2+03/LL	5'	7'
36	8" X 4" Tee Saddle	18	4	2+23/RL	5'	13'
37	Riser on Cleanout	22	B	CO #1 48.2/RL	6'	7'

NOTE: Vertical Riser Pipe shall be extended to 2' minimum above ground water elevation and 4' maximum below proposed ground elevation. Contractor shall use method B for riser construction. See Detail, Sheet 10.



RIDGE PORT NORTH 5TH ADDITION
LINES 3 & 4, CO # 1
 SANITARY SEWER IMPROVEMENTS

BAUGHMAN COMPANY P.A.
 ENGINEERING, SURVEYING, & PLANNING
 318-282-7271 • 318 ELLIS • WICHITA, KANSAS 67211

PROJECT NUMBER: **488-95224**
 SHEET: **4** OF **14**

DESIGN: NBW
 DRAWN: CSB
 APPROVED: [Signature]
 DATE: 3/17/04
 SCALE: Noted