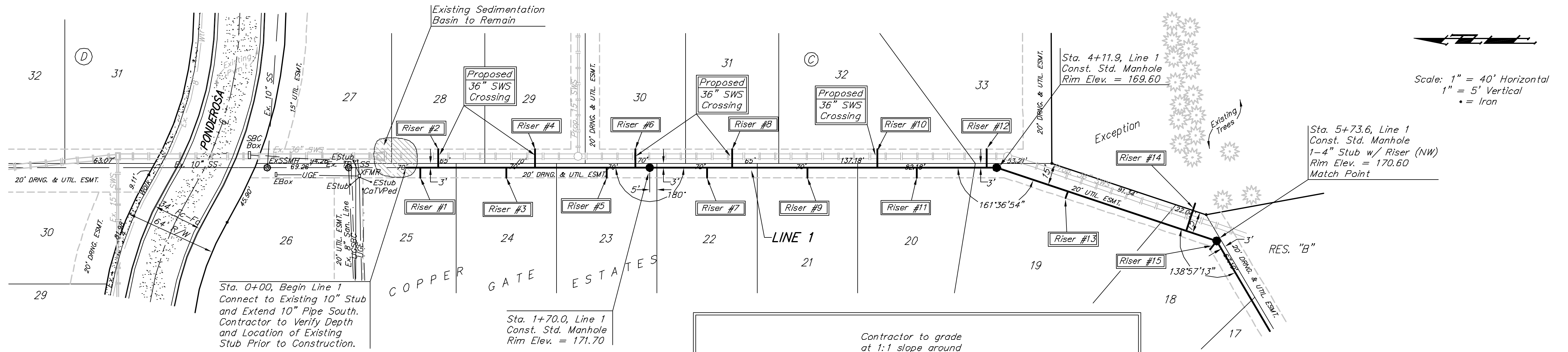


BENCHMARK:
City of Wichita benchmark at the SE corner of intersection of 135th Street West and 13th Street North.
Elev. = 167.83 (City Datum)

Brass Benchmark Disc Adjacent to Fire Hydrant at E. End of E. Curb Return of Ponderosa & Ponderosa Ct.
Elev. = 170.96 (City Datum)



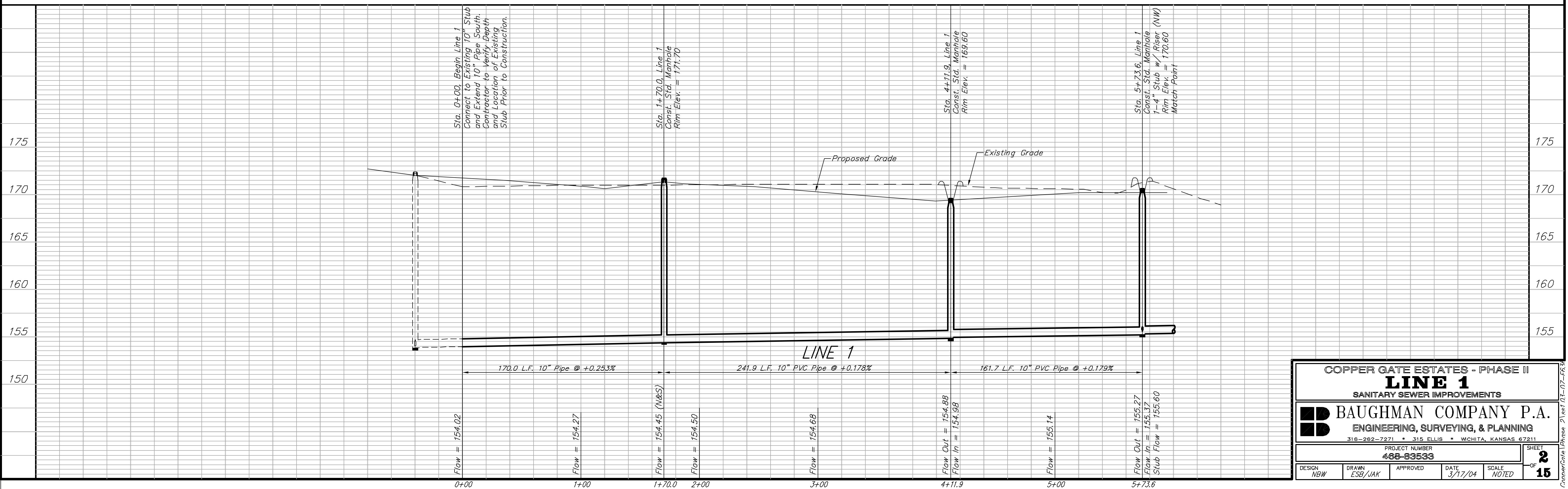
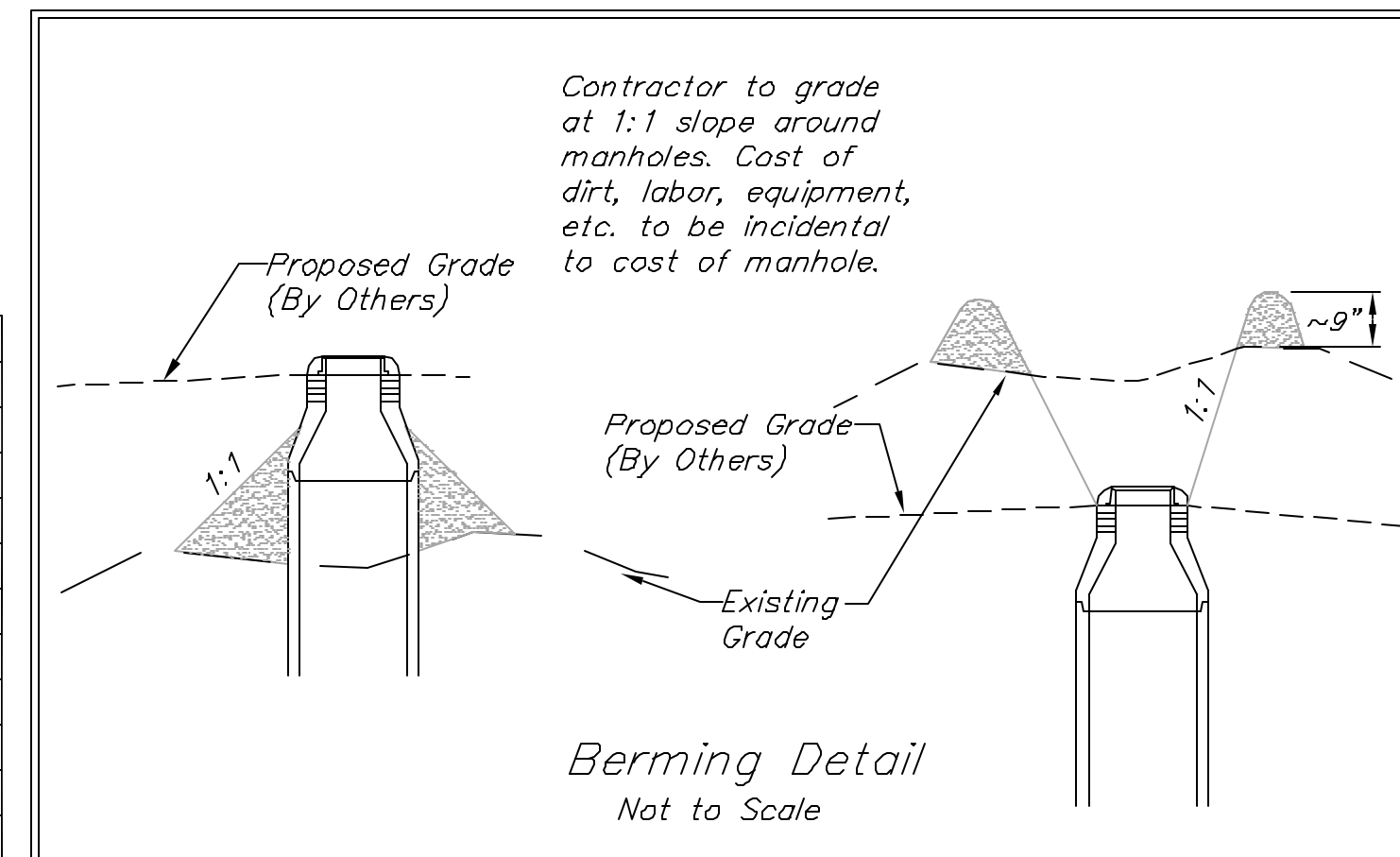
SEWER SERVICE TABLE

NUMBER	TYPE	LOCATION			FOR INFORMATION ONLY	
		LOT NO.	BLOCK NO.	LINE NO.	STATION/DIRECTION	APPROXIMATE LENGTH 4" PIPE
1	10" X 4" Tee Saddle	25	C	1	0+10/Rt.	14' 7.0'
2	10" X 4" Tee Saddle	28	C	1	0+23/Lt.	14' 13.0'
3	10" X 4" Tee Saddle	24	C	1	0+70/Rt.	13.5' 7.0'
4	10" X 4" Tee Saddle	29	C	1	0+90/Lt.	13' 13.0'
5	10" X 4" Tee Saddle	23	C	1	1+40/Rt.	12.5' 7.0'
6	10" X 4" Tee Saddle	30	C	1	1+60/Lt.	13' 13.0'

NOTE: Vertical Riser Pipe shall be extended to 2' minimum above ground water elevation and 4' maximum below proposed ground elevation.

SEWER SERVICE TABLE

NUMBER	TYPE	LOCATION			FOR INFORMATION ONLY	
		LOT NO.	BLOCK NO.	LINE NO.	STATION/DIRECTION	APPROXIMATE LENGTH 4" PIPE
7	10" X 4" Tee Saddle	22	C	1	2+10/Rt.	13' 7.0'
8	10" X 4" Tee Saddle	31	C	1	2+28/Lt.	12.5' 13.0'
9	10" X 4" Tee Saddle	21	C	1	2+80/Rt.	12' 7.0'
10	10" X 4" Tee Saddle	32	C	1	3+29/Lt.	11.5' 13.0'
11	10" X 4" Tee Saddle	20	C	1	3+56/Rt.	11' 7.0'
12	10" X 4" Tee Saddle	33	C	1	4+05/Lt.	11' 13.0'
13	10" X 4" Tee Saddle	19	C	1	4+64/Rt.	11' 5.0'
14	10" X 4" Tee Saddle	N/A	N/A	N/A	5+51/Lt.	11' 20.0'
15	4" Stub w/Riser	18	C	1	5+73.6/Rt.	10.5' 7.0'



COPPER GATE ESTATES - PHASE II
LINE 1
SANITARY SEWER IMPROVEMENTS

BAUGHMAN COMPANY P.A.
ENGINEERING, SURVEYING, & PLANNING
318-262-7271 • 315 ELLIS • WICHITA, KANSAS 67211

PROJECT NUMBER: 488-83533
SHEET 2 OF 15

DESIGN: NBW
DRAWN: ESB/JAK
APPROVED: [Signature]
DATE: 3/17/04
SCALE: NOTED