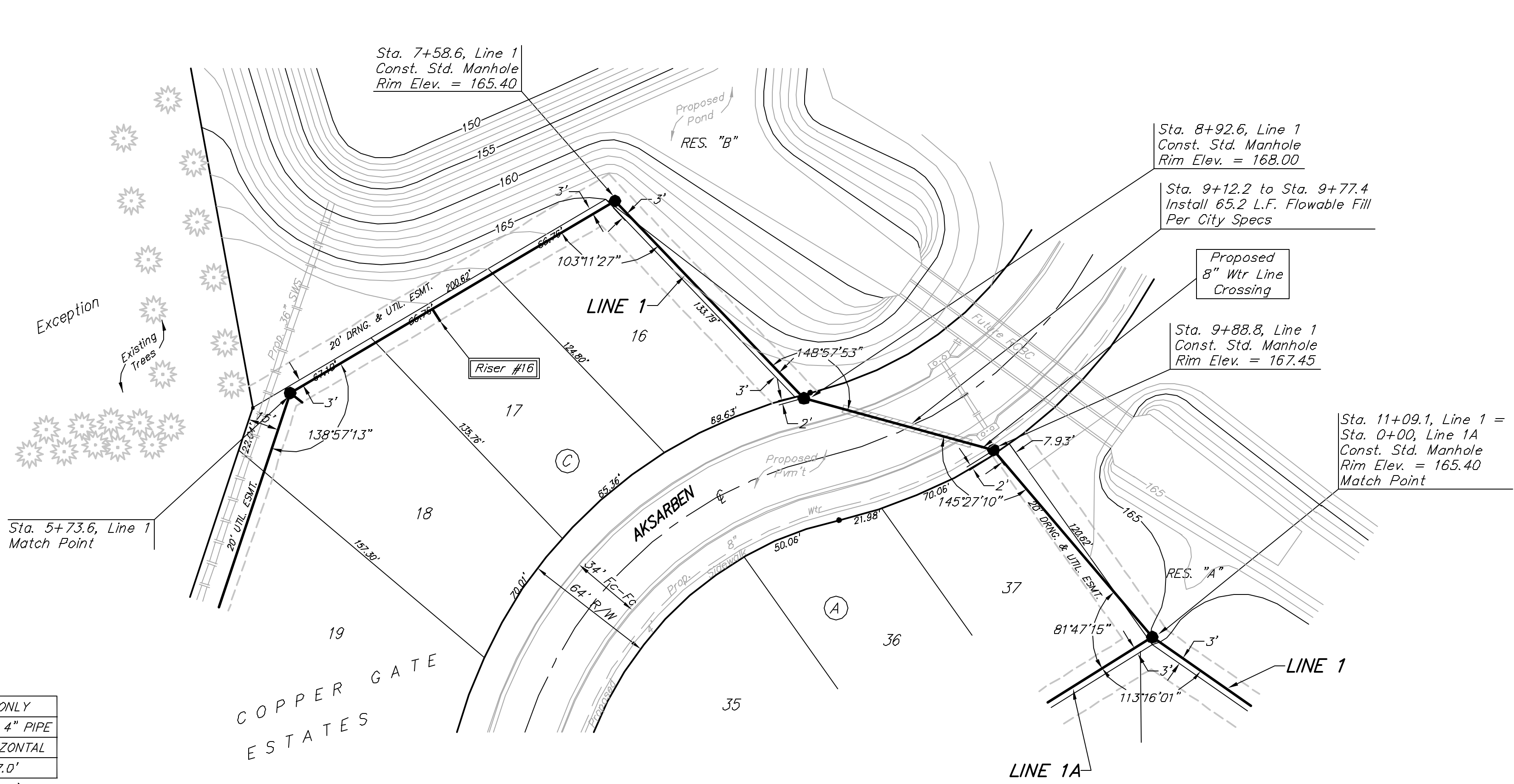


**BENCHMARK:**  
 City of Wichita benchmark at the SE corner of intersection of 135th Street West and 13th Street North.  
 Elev. = 167.83 (City Datum)

Brass Benchmark Disc Adjacent to Fire Hydrant at E. End of E. Curb Return of Ponderosa & Ponderosa Ct.  
 Elev. = 170.96 (City Datum)

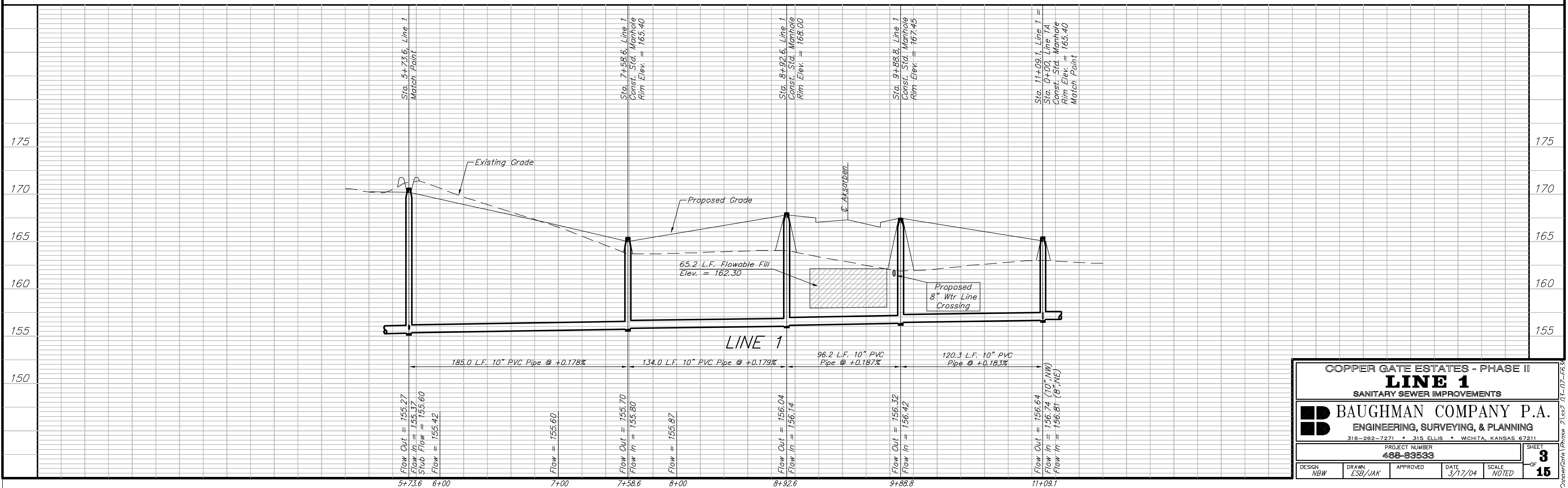


Scale: 1" = 40' Horizontal  
 1" = 5' Vertical  
 • = Iron

**SEWER SERVICE TABLE**

NUMBER	TYPE	LOCATION			STATION \ DIRECTION	FOR INFORMATION ONLY	
		LOT NO.	BLOCK NO.	LINE NO.		APPROXIMATE LENGTH 4" PIPE	VERTICAL
16	10" X 4" Tee Saddle	17	C	1	6+55/Rt.	8.5'	7.0'

NOTE: Vertical Riser Pipe shall be extended to 2' minimum above ground water elevation and 4' maximum below proposed ground elevation.



**COPPER GATE ESTATES - PHASE II**  
**LINE 1**  
 SANITARY SEWER IMPROVEMENTS

**BAUGHMAN COMPANY P.A.**  
 ENGINEERING, SURVEYING, & PLANNING  
 318-262-7271 • 315 ELLIS • WICHITA, KANSAS 67211

PROJECT NUMBER: **468-83533**

DESIGN: NBW | DRAWN: ESB/JAK | APPROVED: [ ] | DATE: 3/17/04 | SCALE: NOTED

SHEET **3** OF **15**