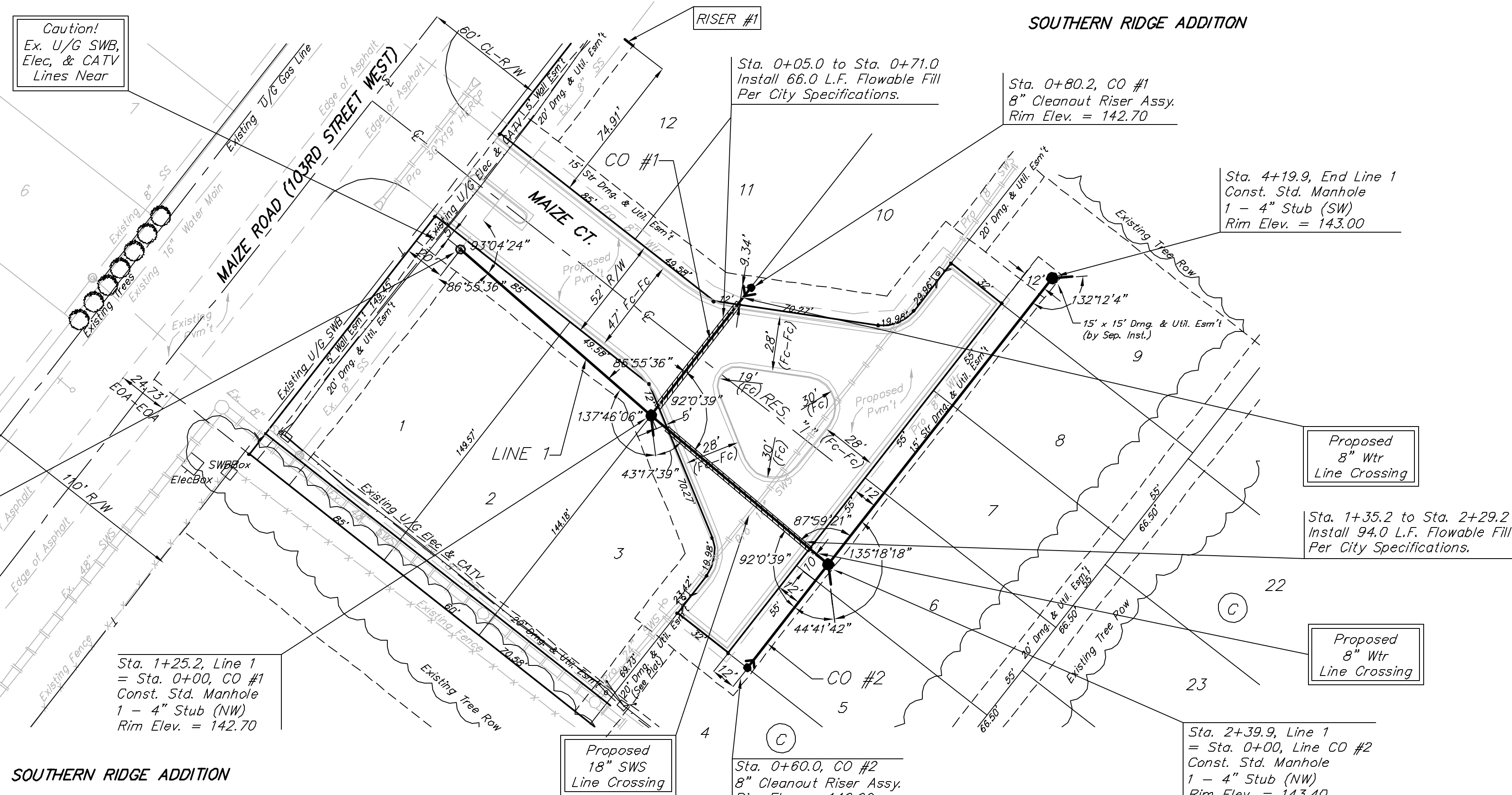


BENCHMARKS:
 BM #1: COW BM at the SW corner of Pawnee Ave. and Maize Road. Elev. = 135.15 (City Datum)
 BM #2: "□" in top of curb on the north side of Yosemite, 65' east of Maize Road. Elev. = 143.67 (City Datum)
 BM #3: COW BM at Shefford on the south side of Pawnee Ave. Elev. = 145.53 (City Datum)

WILDERNESS AT THE PARK ADDITION



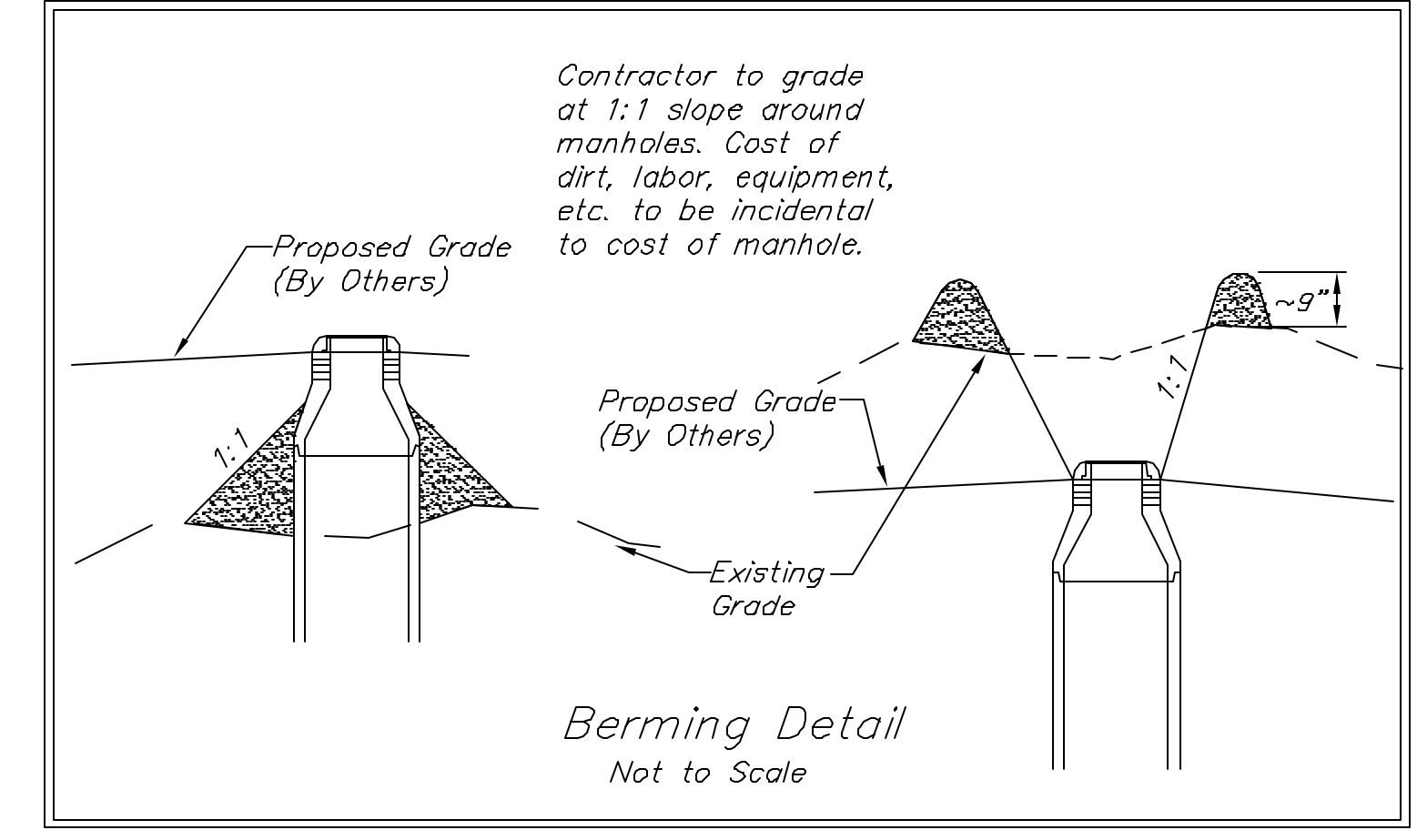
SOUTHERN RIDGE ADDITION

Scale: 1" = 40' Horizontal
 1" = 5' Vertical
 • = Iron

SEWER SERVICE TABLE

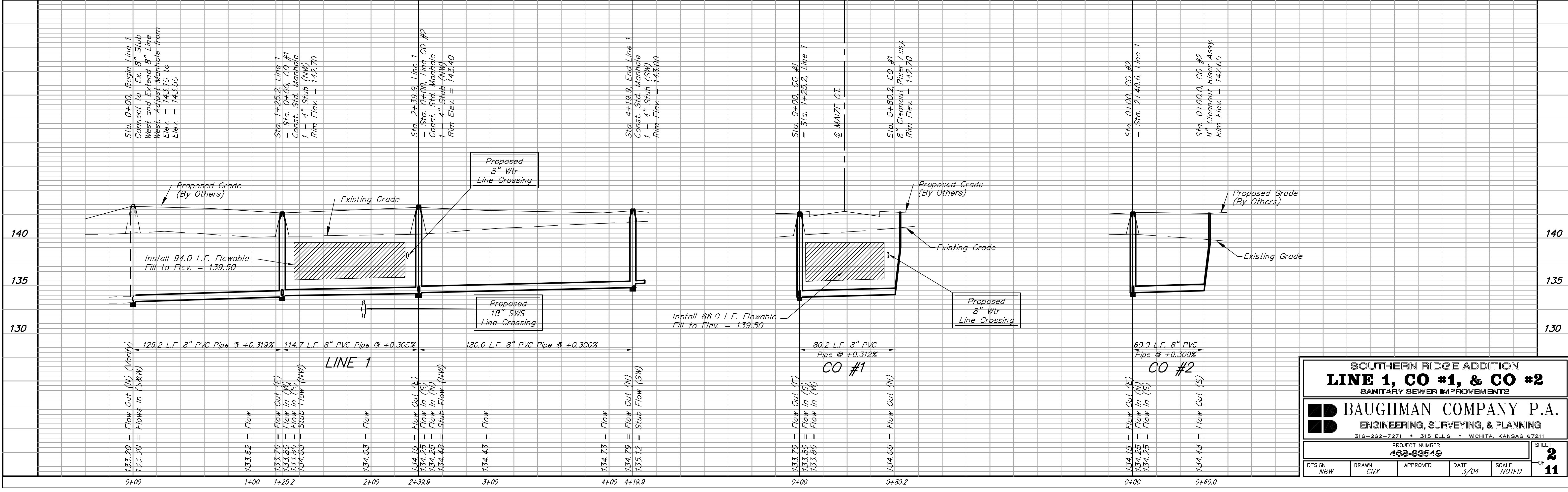
NUMBER	TYPE	LOCATION			FOR INFORMATION ONLY	
		LOT NO.	BLOCK NO.	LINE NO. STATION\ DIRECTION	APPROXIMATE LENGTH 4" PIPE VERTICAL	HORIZONTAL
1	8" X 4" Tee Saddle	12	C		6.5'	5'

NOTE: Vertical Riser Pipe shall be extended to 2' minimum above ground water elevation and 4' maximum below proposed ground elevation.



Contractor shall be required to backfill sanitary sewer trenches with sand, water-jetted and vibrated except at locations where flowable fill is noted.

SOUTHERN RIDGE ADDITION



SOUTHERN RIDGE ADDITION
LINE 1, CO #1, & CO #2
 SANITARY SEWER IMPROVEMENTS

BAUGHMAN COMPANY P.A.
 ENGINEERING, SURVEYING, & PLANNING

316-262-7271 • 315 ELLIS • WICHITA, KANSAS 67211

PROJECT NUMBER: **488-93549**

DESIGN: NBW	DRAWN: GNV	APPROVED:	DATE: 3/04	SCALE: NOTED
-------------	------------	-----------	------------	--------------

SHEET **2** OF **11**