

AS BUILT PLANS

Contractor: Ewertz Excavation
 Inspector: Don Eddingfield, Baughman Co.
 pdf's by : KEK, 9/25/13

STORM WATER SEWER TO SERVE

WATERWALK WEST ADDITION

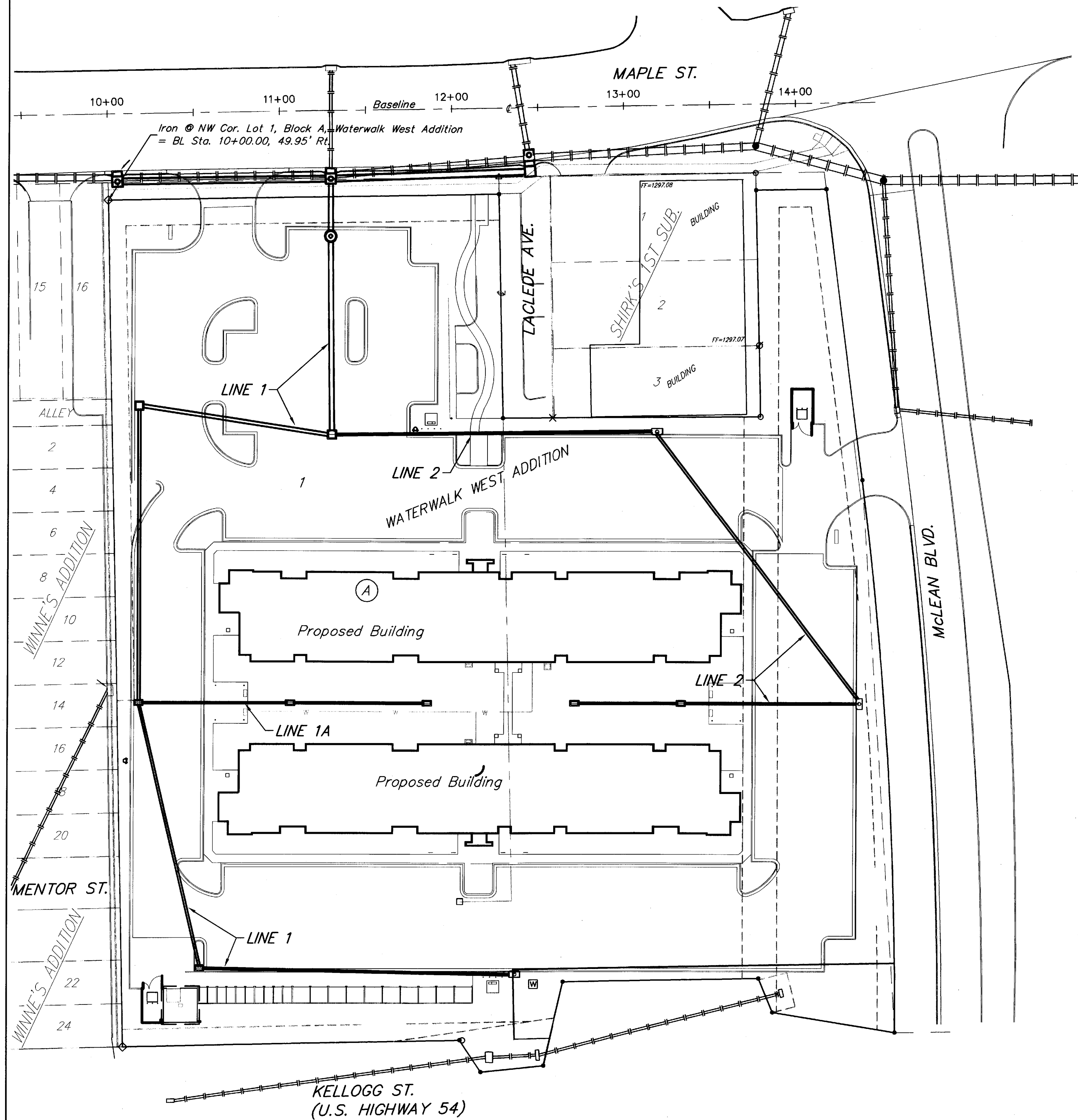
Lot 1, Block A

Private Project: 106 PPD (607861)

CITY OF WICHITA, KANSAS

Gary Janzen, P.E. Interim City Engineer

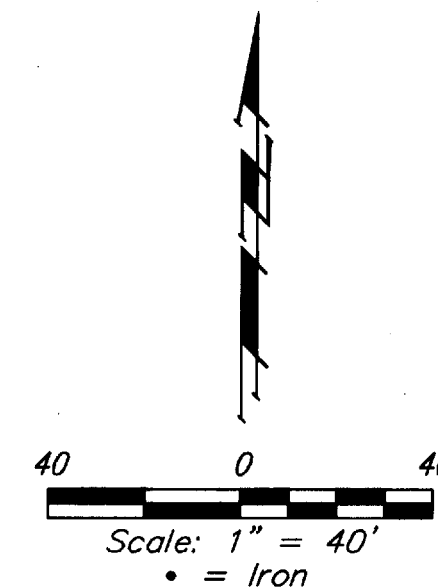
July 2012



Benchmarks

Cross cut inside square cut on top of curb, East side of Ice Center drive entrance, 21.5' S. & 21.3' W. of the northwest corner of Lot 1, Block A, Waterwalk West Addition. Elev. = 1297.73 NAVD88

Chiseled square on Kellogg R/W fence footing, 1.8' S. of the SW corner of Lot 11, Shirk's 1st Sub. Elev. = 1296.14 NAVD88



Sheet Index

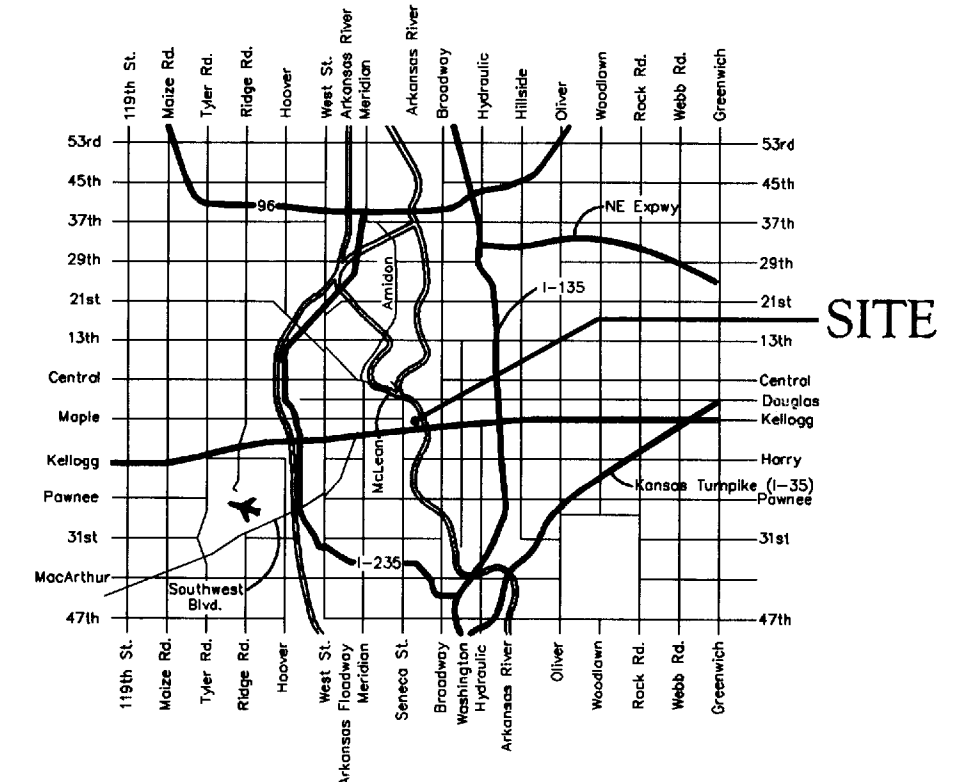
Title Sheet	1
Line 1 Plan/Profile	2-3
Line 2 Plan/Profile	4
Line 1A Plan/Profile	5
HG-6 Details	6
Reference Grading Plan	R1
Reference E.C. Plan	R2
Reference ERU Plan	R3
Details	Available upon request.

Legal Description

Lot 1, Block A, Waterwalk West Addition, Wichita, Sedgwick County, Kansas.

GENERAL NOTES:

- Contractor will be required to provide notice to utility companies a minimum of forty-eight (48) hours prior to any excavation, as follows:
 Kansas One-Call 687-2470
 The Contractor must notify the following in case of an emergency:
 Cox Communications 262-4270
 Kansas Gas Service 1-888-482-4950
 Westar Energy 383-8650
 Black Hills Energy (Gas) 1-800-303-0357
 ATT 268-2245
 City of Wichita Water Dept. 268-4563
 City of Wichita Sewer Maint. 268-4024
 City of Wichita Storm Sewer Maint. 268-4090
 City of Wichita Traffic Maint. 268-4034
- Utility service lines, poles, valve boxes, meters, and etcetera are to be adjusted as necessary by others prior to construction unless the plans specifically call for their adjustment by the Contractor or unless the plans specifically identify a utility to be adjusted by its owner during construction. Existing utilities and their location, as shown on the plans, represent the best information obtainable for design. The Contractor will be required to work around existing utilities within the right-of-way which do not conflict with proposed construction.
- All disturbed R/W areas not intended for pavement or sidewalk construction shall be seeded with Kansas Premium Fescue Blend at a rate of 8 lb./1000 Sq. Ft., fertilized with a 16-20-6 ratio at a rate of 4 lb./1000 Sq. Ft., and mulched with Prairie Hay at a rate of 92 lb./1000 Sq. Ft. Mulch shall be "patted" with forks or punched into soil to reduce loss due to wind.
- Rubble from the removal of miscellaneous structures and excess excavation which is to be wasted shall be disposed of on sites to be provided by the Contractor. These sites shall be approved by the Engineer as to suitability, appearance and site location. Locations, in the opinion of the Engineer, that will leave an unsightly appearance will not be approved. All disposal sites must be approved by the Kansas Department of Health and Environment. Material either stockpiled or disposed of in a flood plain would require a Kansas State Board of Agriculture permit. Any material dumped in waters of the United States or wetlands is subject to U.S. Corps. of Engineers permitting regulations. Any material buried or stockpiled beyond approved construction limits would require additional archaeological investigations unless buried in a previously approved borrow location.
- Contractor shall furnish the inspector with a copy of the manufacturer's certification for any pipe used on this project after completion of pipe installation. The engineer will not certify the project to the city until pipe certification has been received.
- Trees and shrubs in public right-of-way which are in direct conflict with proposed new construction shall be removed by the Contractor with the Engineer's approval. Trees and shrubs which are not in direct conflict with proposed new construction shall be saved and protected from damage.
- All sewer lines and appurtenances shall be installed in accordance with the most recent edition of City of Wichita, Kansas Standard Specifications for the Construction of City Projects.
- Contractor shall not start work on the project until the project inspector is assigned to the project and is present on the site. Contractor shall not start on the project until all necessary bonds and permits have been obtained. Bonds may include but are not limited to Statutory, Performance & Maintenance. Any work done without inspection will be required to be uncovered for inspection.



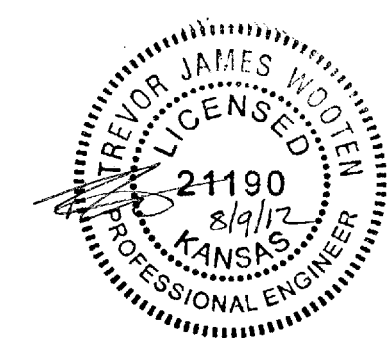
APPROVED AS NOTED
 BY CITY ENGINEER OF WICHITA

Engineering *Julian Kallman* 8-7-12

Stormwater *[Signature]* 8/8/12

NOTE TO CONTRACTORS

Installation, inspection and testing for this project is to be provided by a Licensed Consulting Engineering Firm under contract with the Owner/Developer. Said inspection to be in accordance with the City of Wichita standard construction engineering practices and certified by a Licensed Professional Engineer. No work shall be performed in dedicated easements or public right-of-way by the Contractor without such inspection nor shall any work be commenced without written authorization by the City Engineer. All Construction and Materials shall comply with the City of Wichita Specifications and Standards (on file and available in the City Engineer's Office).



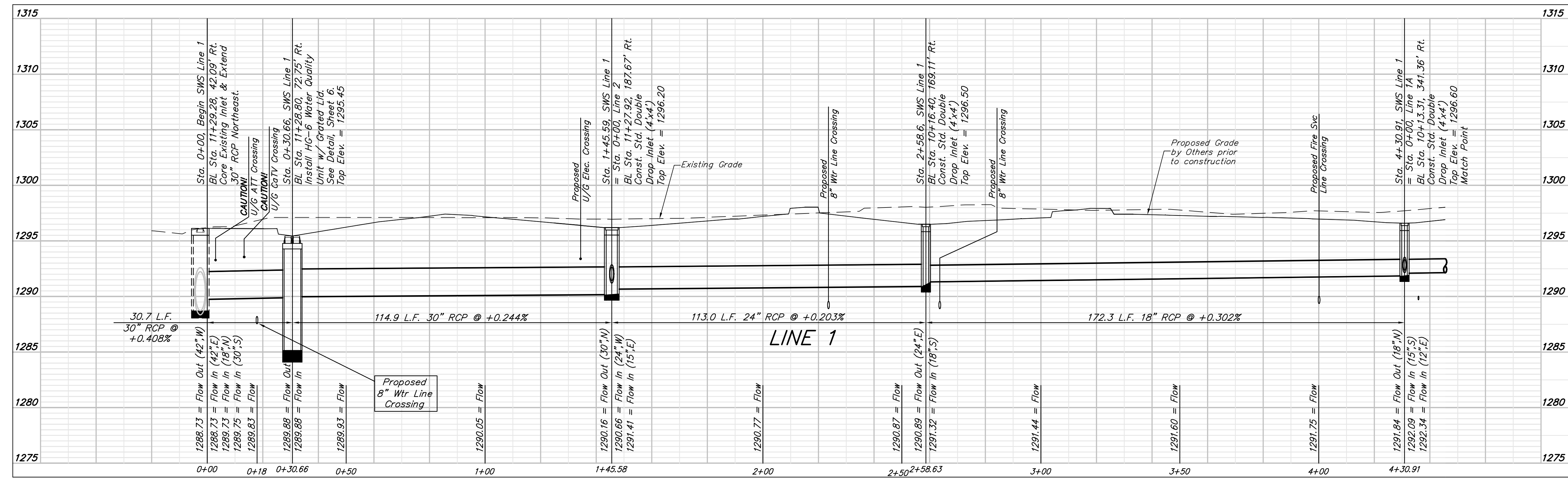
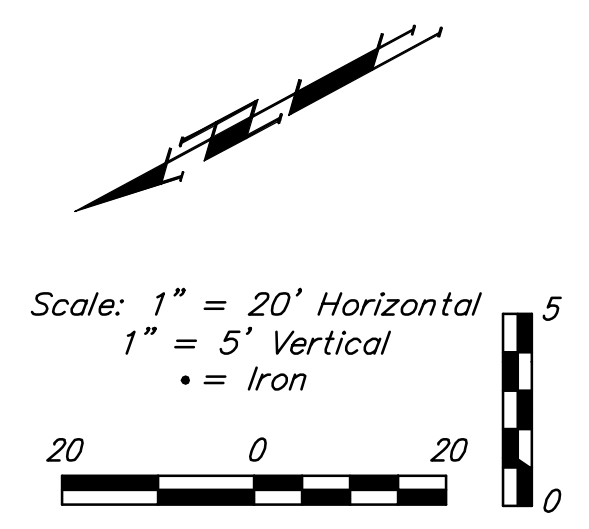
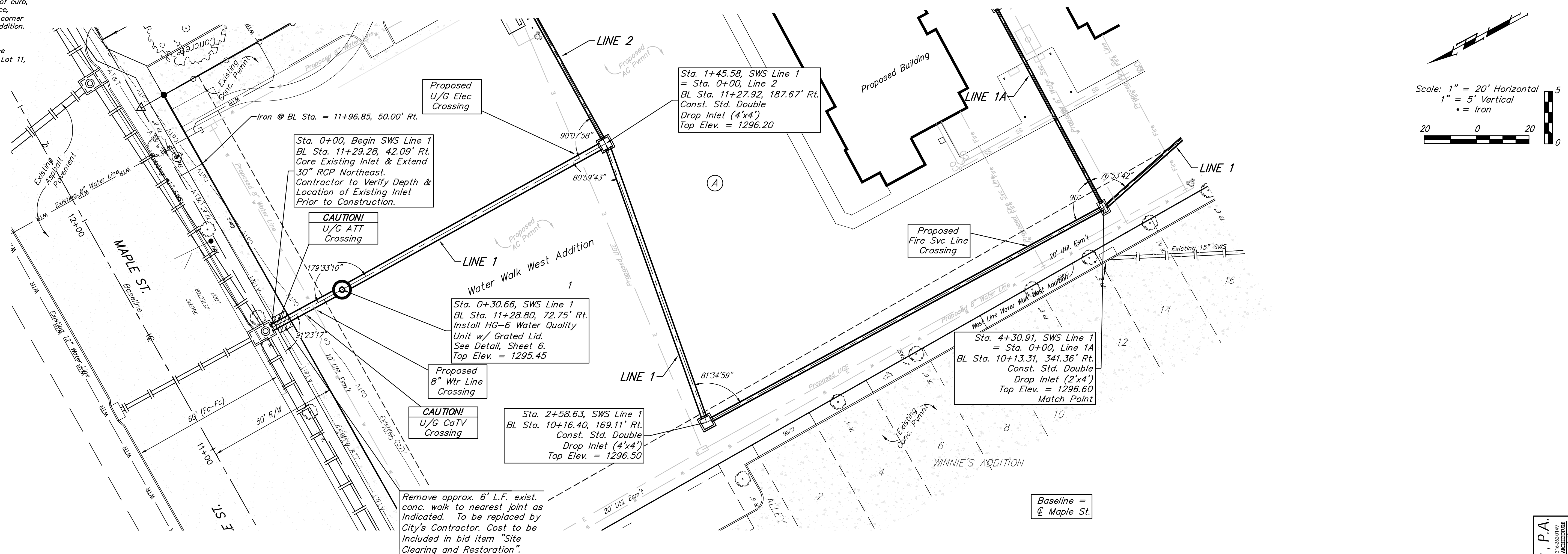
Baughman Company, P.A. 315 Ellis St. Wichita, KS 67211 P 316-262-7271 F 316-262-0149
 ENGINEERING | SURVEYING | PLANNING | LANDSCAPE ARCHITECTURE

VICINITY MAP

NO SCALE:

BENCHMARK
 Cross cut inside square cut on top of curb, East side of Ice Center drive entrance, 21.1' S. & 21.3' W. of the northwest corner of Lot 1, Block A, Waterwalk West Addition. Elev. = 1297.73 NAVD88

Chiseled square on Kellogg R/W fence footing, 1.8' S. of the SW corner of Lot 11, Shirk's 1st Sub. Elev. = 1296.14 NAVD88



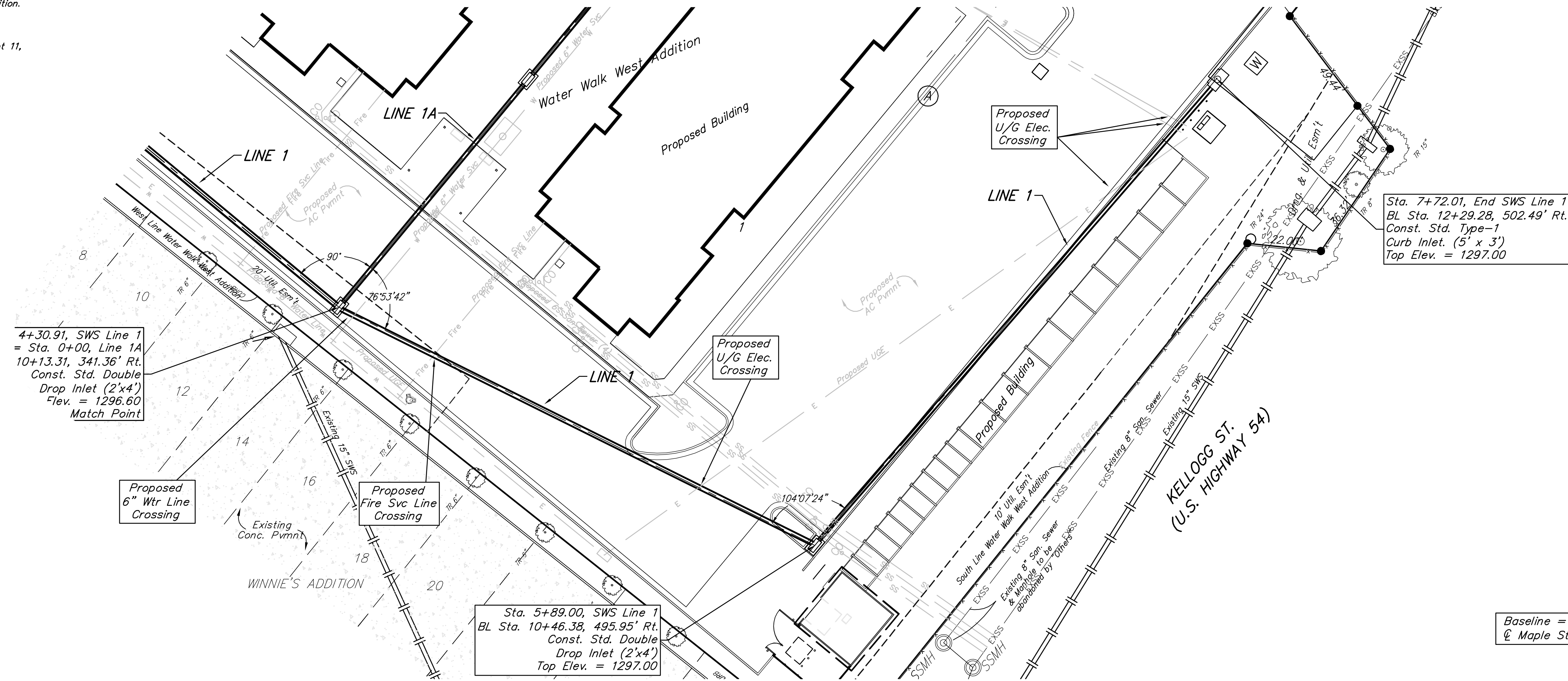
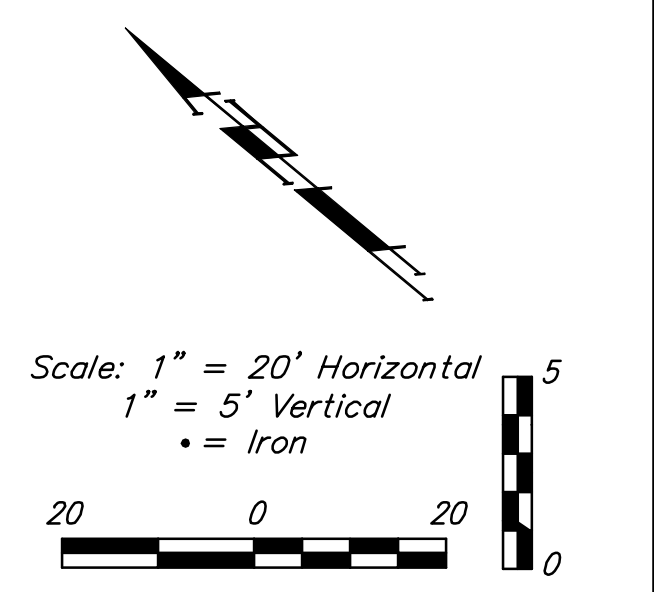
Baughman Company, P.A.
 315 E. St. Wichita, KS 67211, P. 316.262.3771, F. 316.262.0149
 ENGINEERING | SURVEYING | PLANNING | LANDSCAPE ARCHITECTURE
 Design: JAK Approved: JAK Date: 07/12
 P.E. Christopher Williams, P.E. License: 14042011, Registration: 14042011

WATERWALK WEST ADDITION
LINE 1
 Private Stormwater Drain Improvements

REVISIONS:
 SHEET 2
 OF 7

BENCHMARK
 Cross cut inside square cut on top of curb,
 East side of Ice Center drive entrance,
 21.1' S. & 21.3' W. of the northwest corner
 of Lot 1, Block A, Waterwalk West Addition.
 Elev. = 1297.73 NAVD88

Chiseled square on Kellogg R/W fence
 footing, 1.8' S. of the SW corner of Lot 11,
 Shirk's 1st Sub.
 Elev. = 1296.14 NAVD88



4+30.91, SWS Line 1
 = Sta. 0+00, Line 1A
 10+13.31, 341.36' Rt.
 Const. Std. Double
 Drop Inlet (2'x4')
 Elev. = 1296.60
 Match Point

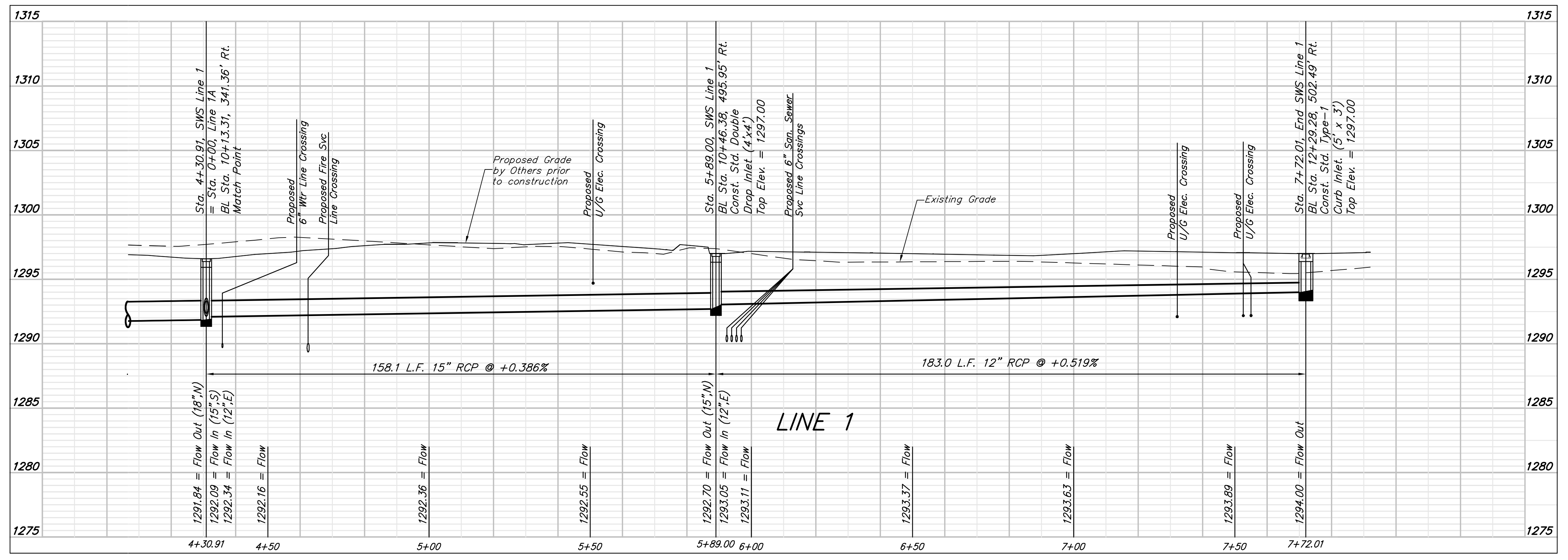
Proposed
 6" Wtr Line
 Crossing

Proposed
 Fire Svc Line
 Crossing

Sta. 5+89.00, SWS Line 1
 BL Sta. 10+46.38, 495.95' Rt.
 Const. Std. Double
 Drop Inlet (2'x4')
 Top Elev. = 1297.00

Sta. 7+72.01, End SWS Line 1
 BL Sta. 12+29.28, 502.49' Rt.
 Const. Std. Type-1
 Curb Inlet (5' x 3')
 Top Elev. = 1297.00

Baseline =
 ☉ Maple St.



1315
1310
1305
1300
1295
1290
1285
1280
1275

1315
1310
1305
1300
1295
1290
1285
1280
1275

Sta. 4+30.91, SWS Line 1
 = Sta. 0+00, Line 1A
 BL Sta. 10+13.31, 341.36' Rt.
 Match Point

Proposed
 6" Wtr Line Crossing
 Proposed Fire Svc
 Line Crossing

Proposed Grade
 by Others prior
 to construction
 Proposed
 U/G Elec. Crossing

Sta. 5+89.00, SWS Line 1
 BL Sta. 10+46.38, 495.95' Rt.
 Const. Std. Double
 Drop Inlet (4'x4')
 Top Elev. = 1297.00
 Proposed 6" San. Sewer
 Svc Line Crossings

Existing Grade

Proposed
 U/G Elec. Crossing
 Proposed
 U/G Elec. Crossing

Sta. 7+72.01, End SWS Line 1
 BL Sta. 12+29.28, 502.49' Rt.
 Const. Std. Type-1
 Curb Inlet (5' x 3')
 Top Elev. = 1297.00

158.1 L.F. 15" RCP @ +0.386%

183.0 L.F. 12" RCP @ +0.519%

LINE 1

1291.84 = Flow Out (18"N)
 1292.09 = Flow In (15"S)
 1292.34 = Flow In (12"E)
 1292.16 = Flow

1292.36 = Flow

1292.55 = Flow

1292.70 = Flow Out (15"N)
 1293.05 = Flow In (12"E)
 1293.11 = Flow

1293.37 = Flow

1293.63 = Flow

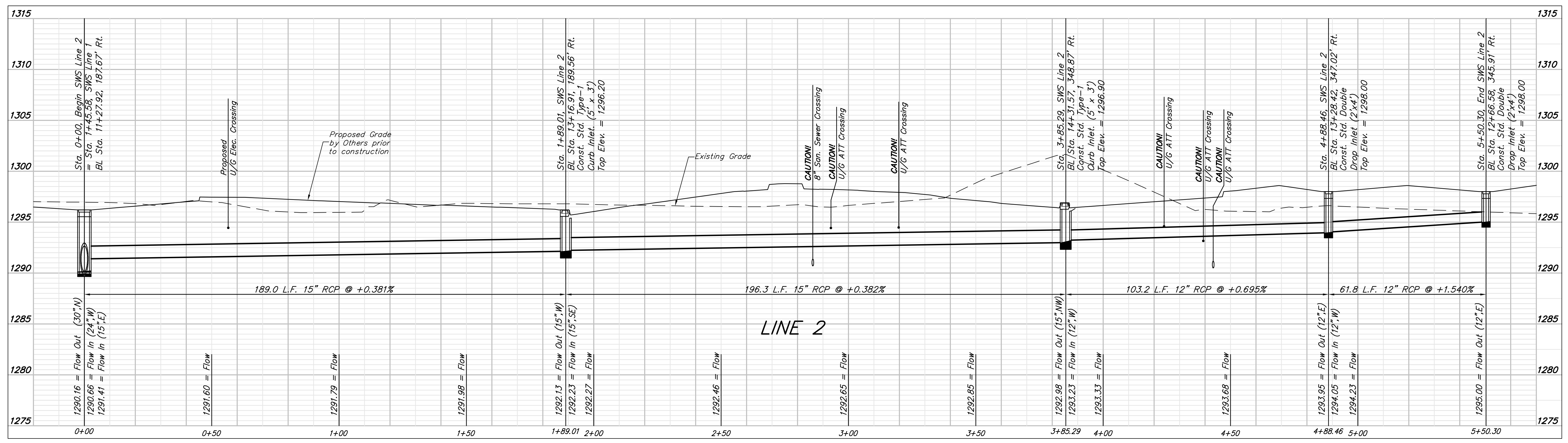
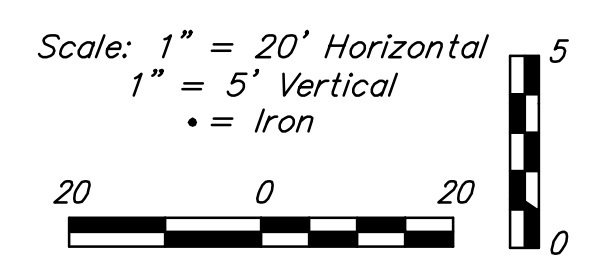
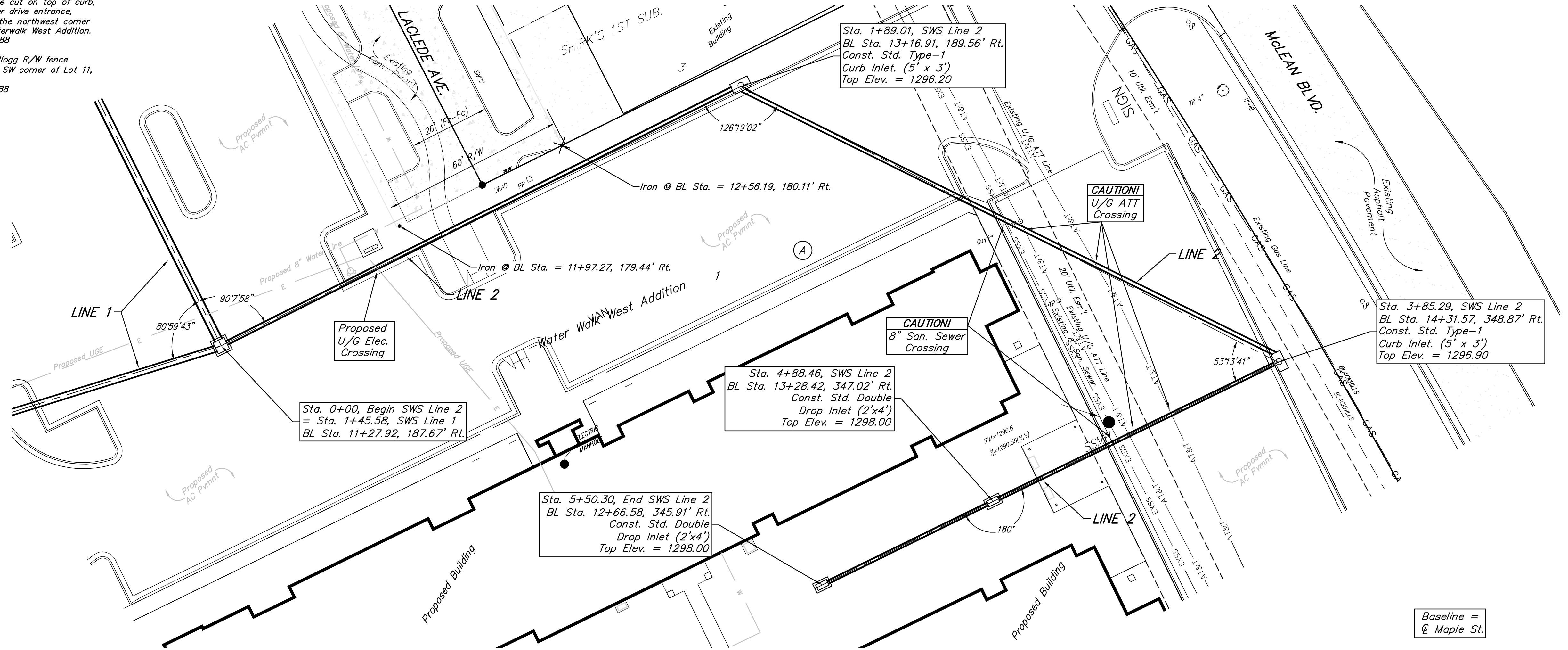
1293.89 = Flow

1294.00 = Flow Out

4+30.91 4+50 5+00 5+50 5+89.00 6+00 6+50 7+00 7+50 7+72.01

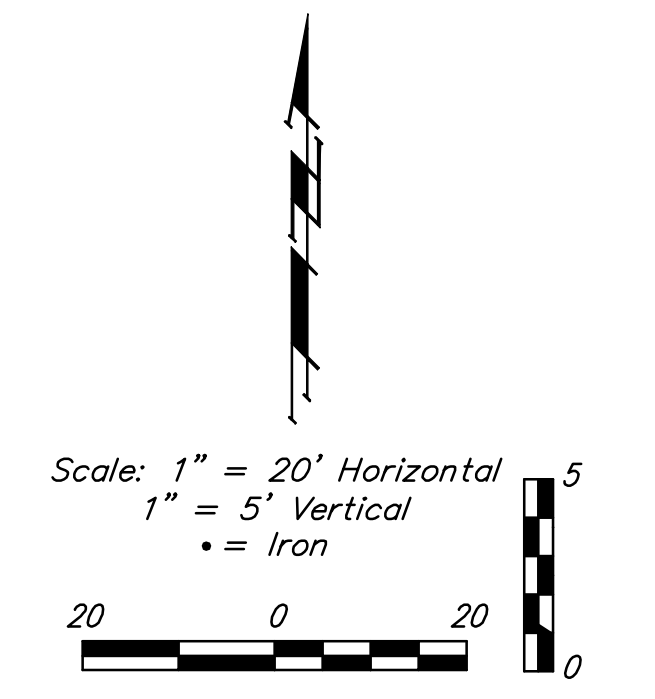
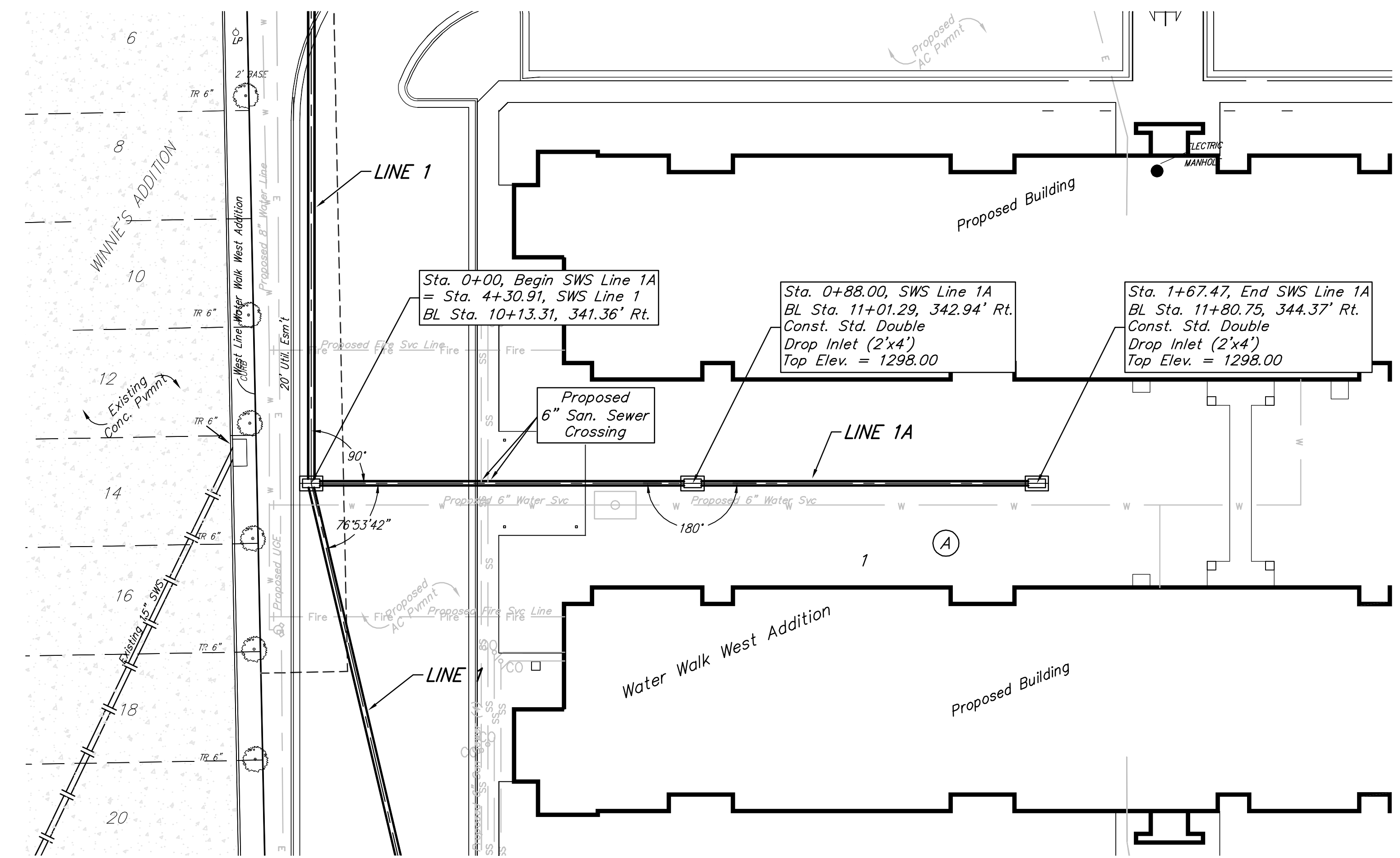
BENCHMARK
 Cross cut inside square cut on top of curb, East side of Ice Center drive entrance, 21' S. & 21.3' W. of the northwest corner of Lot 1, Block A, Waterwalk West Addition. Elev. = 1297.73 NAVD88

Chiseled square on Kellogg R/W fence footing, 1.8' S. of the SW corner of Lot 11, Shirk's 1st Sub. Elev. = 1296.14 NAVD88

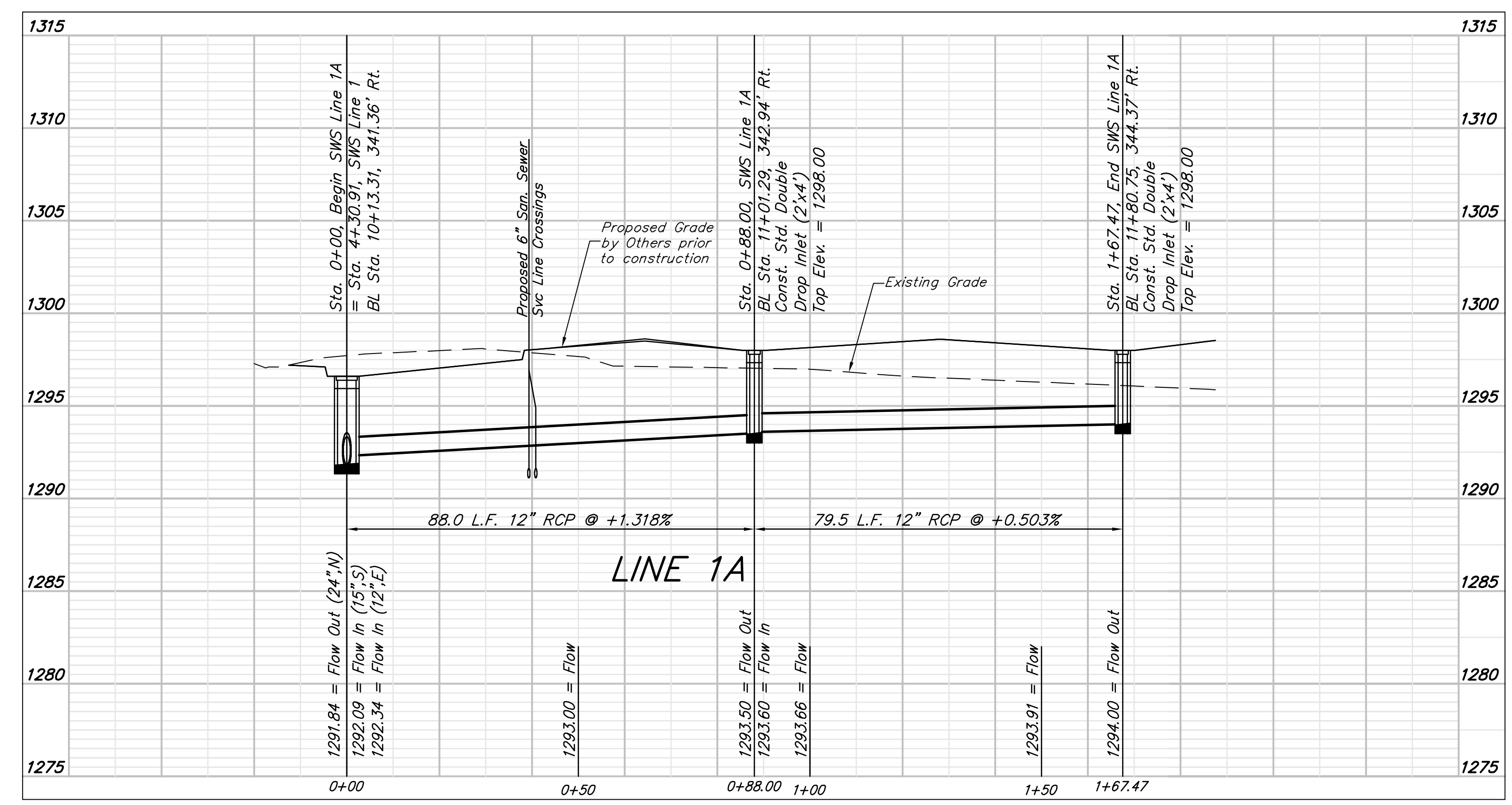


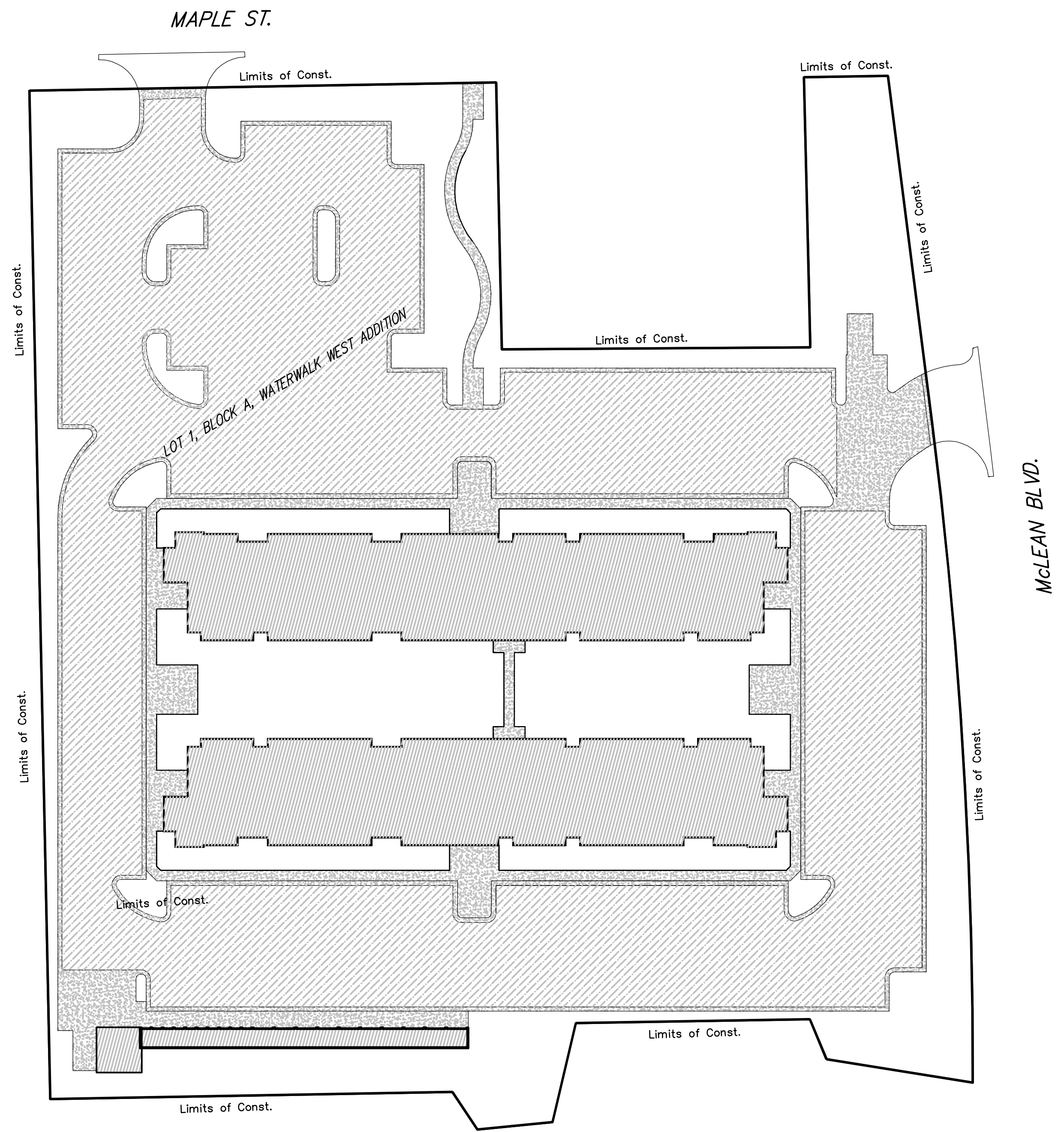
BENCHMARK
 Cross cut inside square cut on top of curb,
 East side of Ice Center drive entrance,
 21.1' S. & 21.3' W. of the northwest corner
 of Lot 1, Block A, Waterwalk West Addition.
 Elev. = 1297.73 NAVD88

Chiseled square on Kellogg R/W fence
 footing, 1.8' S. of the SW corner of Lot 11,
 Shirk's 1st Sub.
 Elev. = 1296.14 NAVD88

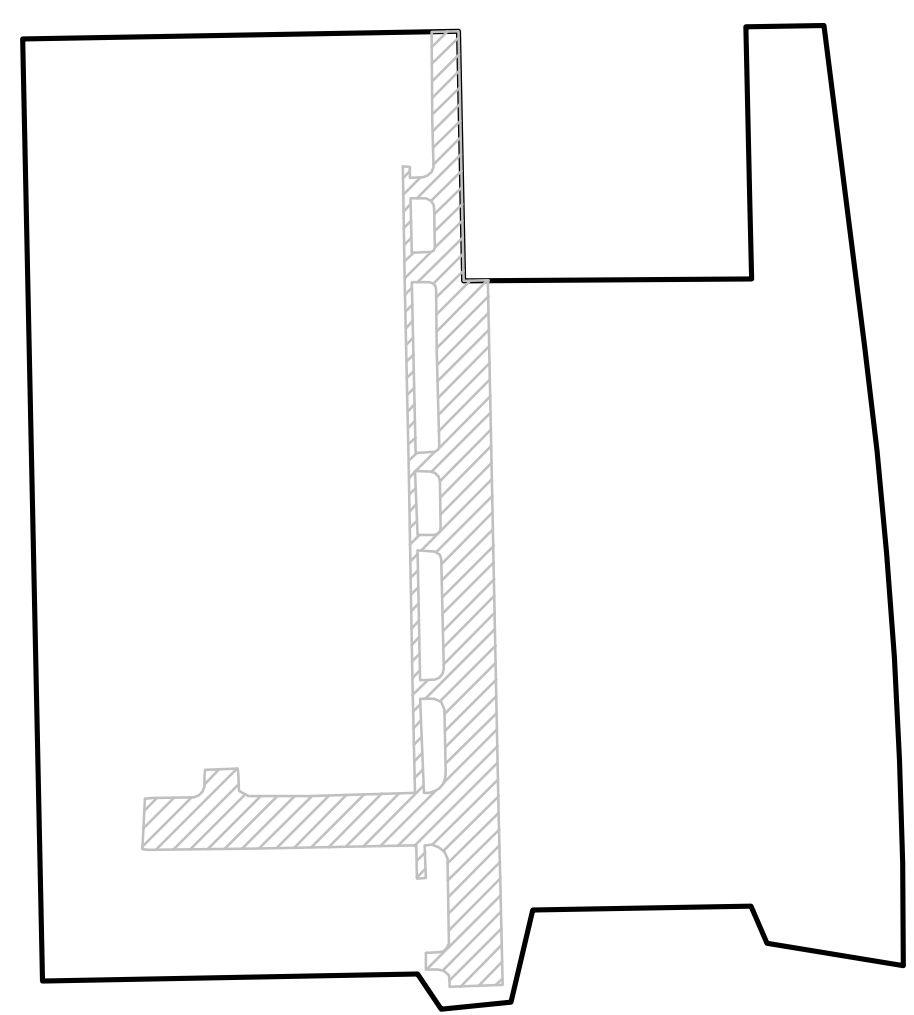
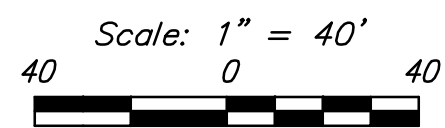


Baseline =
 ☒ Maple St.

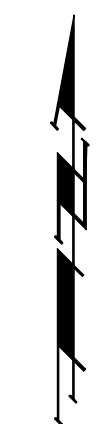
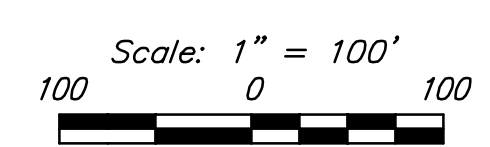




NEW IMPERVIOUS AREA



IMPERVIOUS AREA REMOVED



BENCHMARK

Cross cut inside square cut on top of curb, East side of Ice Center drive entrance, 21.1' S. & 21.3' W. of the northwest corner of Lot 1, Block A, Waterwalk West Addition.
Elev. = 1297.73 NAVD88

Chiseled square on Kellogg R/W fence footing, 1.8' S. of the SW corner of Lot 11, Shirk's 1st Sub.
Elev. = 1296.14 NAVD88

LEGAL DESCRIPTION

Lot 1, Block A, Waterwalk West Addition, Wichita, Sedgwick County, Kansas.

SITE INFORMATION

Total Area: ±191,664 sq. ft. (4.4 acres)
Impervious Area: ±130,786 sq. ft. (3.0 acres)
Building Area: 29521 sq. ft.
Parking Provided: 253 Spaces

ERU LEGEND

- = Project Limits
- = Ex. Impervious Area to remain
- = Prop. Impervious Area

Baughman Company, P.A.
 315 E. W. Wichita, KS 67211 P 316.262.3711 F 316.262.0149
ENGINEERING | SURVEYING | PLANNING | LANDSCAPE ARCHITECTURE
 Design: JAK Approved: JAK Date: 2/1/20
 P.E. E. Christopher Williams, P.E. License: 140426101

WATERWALK WEST ADDITION
ERU PLAN
 Private Stormwater Drain Improvements

REVISIONS:
 SHEET
 OF
 7
 7