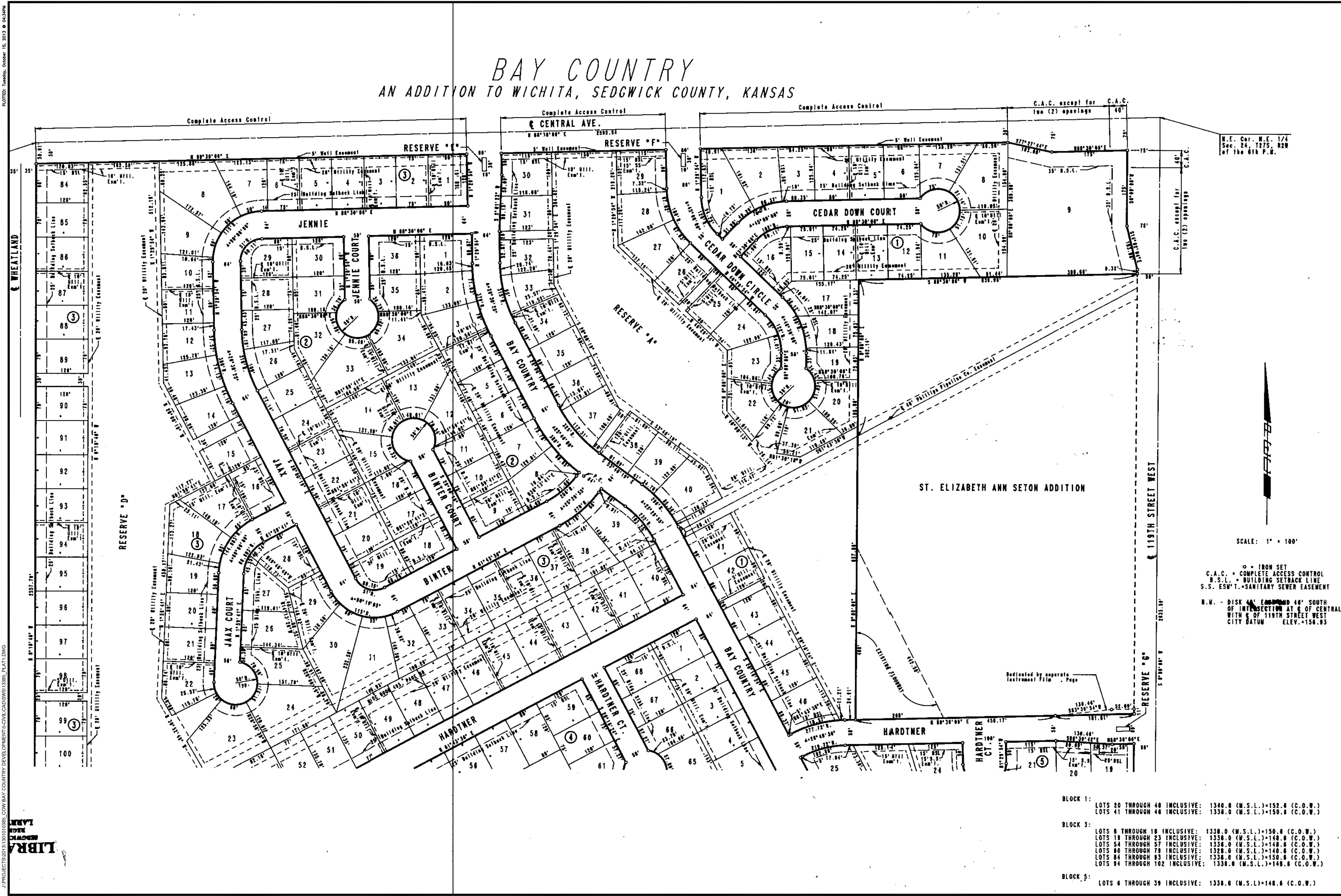


# BAY COUNTRY

AN ADDITION TO WICHITA, SEDGWICK COUNTY, KANSAS



N.E. Cor. N.E. 1/4  
Sec. 24, T27S, R2W  
of the 6th P.M.

SCALE: 1" = 100'

○ = IRON SET  
C.A.C. = COMPLETE ACCESS CONTROL  
B.S.L. = BUILDING SETBACK LINE  
S.S. ESM'T. = SANITARY SEWER EASEMENT

N.W. - DISK AND EMBROID 40' SOUTH  
OF INTERSECTION AT E OF CENTRAL  
WITH W OF 119TH STREET WEST  
CITY DATUM ELEV. = 156.93

SANITARY SEWER PLANS FOR

# BAY COUNTRY ADDITION

PHASE 1

©2013  
MKEC Engineering  
All Rights Reserved  
www.mkec.com  
These drawings and their contents,  
including, but not limited to, all concepts,  
designs, & ideas are the exclusive  
property of MKEC Engineering (MKEC),  
and may not be used or reproduced in any  
way without the express consent of MKEC.

## FINAL PLAT 1

PROJECT NO.	468-84888
DATE	OCTOBER 2013
SCALE	#"=#
DESIGNED	ABC
DRAWN	ABC
CHECKED	ABC
#	###/###
NO.	REVISION DATE

SHEET NO.  
15 OF 16

BLOCK 1:	LOTS 20 THROUGH 40 INCLUSIVE: 1340.0 (M.S.L.)=152.0 (C.O.W.)
	LOTS 41 THROUGH 46 INCLUSIVE: 1338.0 (M.S.L.)=150.0 (C.O.W.)
BLOCK 3:	LOTS 6 THROUGH 18 INCLUSIVE: 1338.0 (M.S.L.)=150.0 (C.O.W.)
	LOTS 19 THROUGH 23 INCLUSIVE: 1336.0 (M.S.L.)=148.0 (C.O.W.)
	LOTS 54 THROUGH 57 INCLUSIVE: 1336.0 (M.S.L.)=148.0 (C.O.W.)
	LOTS 60 THROUGH 79 INCLUSIVE: 1328.0 (M.S.L.)=140.0 (C.O.W.)
	LOTS 84 THROUGH 83 INCLUSIVE: 1336.0 (M.S.L.)=150.0 (C.O.W.)
	LOTS 94 THROUGH 102 INCLUSIVE: 1338.0 (M.S.L.)=148.0 (C.O.W.)
BLOCK 5:	LOTS 6 THROUGH 39 INCLUSIVE: 1338.0 (M.S.L.)=148.0 (C.O.W.)

LIBRA  
 PROJECTS/2013/10/10/46888\_COW BAY COUNTRY DEVELOPMENTS-CIVIL/CADD/SW/13886\_PLAT1.DWG  
 PLOTTED: Tuesday, October 15, 2013 9:04:34 AM