

PAVING PLANS FOR BAY COUNTRY ADDITION

AN ADDITION TO THE CITY OF WICHITA
SEDGWICK COUNTY, KANSAS

PROJECT NO. 472-85103

GARY L. JANZEN, P.E. - CITY ENGINEER

OCA 766297

JENNIE STREET: LOT 2 THROUGH 8, BLOCK 3;
JAAX STREET: LOT 9 THROUGH 15, BLOCK 3;
LOT 22 THROUGH 29, BLOCK 2
JENNIE COURT: LOT 30 THROUGH 36, BLOCK 2;

GENERAL NOTES

1. UNLESS SHOWN OR STATED OTHERWISE ON THESE DRAWINGS, MATERIALS AND CONSTRUCTION SHALL BE IN ACCORDANCE WITH CITY OF WICHITA CONCRETE PAVEMENT AND ASPHALTIC CONCRETE PAVEMENT SPECIFICATIONS.

2. CONTRACTOR WILL BE REQUIRED TO PROVIDE A MINIMUM ADVANCE NOTICE OF SEVENTY-TWO (72) HOURS TO UTILITY COMPANIES PRIOR TO STARTING ANY EXCAVATION AS FOLLOWS:
KANSAS ONE-CALL 1-800-344-7233
OR 687-2470 (LOCAL WICHITA)

THE CONTRACTOR MUST NOTIFY THE FOLLOWING IN CASE OF AN EMERGENCY:

SBC (TELEPHONE)	800-870-8390
COX COMMUNICATIONS (CABLE)	262-0661
WESTAR (ELECTRIC)	383-8600
KANSAS GAS SERVICE (GAS)	832-3101
CITY OF WICHITA WATER & SEWER MAINT.	262-6000
BLACK HILLS ENERGY (GAS)	800-303-0357

3. THE CONTRACTOR SHALL BE RESPONSIBLE FOR PRESERVING PROPERTY IRONS. THE CONTRACTOR WILL BE REQUIRED TO RE-ESTABLISH ANY PROPERTY IRONS WHICH ARE DAMAGED OR DESTROYED BY HIS CONSTRUCTION OPERATIONS. SUCH IRONS SHALL BE RE-ESTABLISHED BY A LICENSED LAND SURVEYOR IN ACCORDANCE WITH STATE LAWS.

4. EXISTING UTILITIES AND THEIR LOCATIONS, AS SHOWN ON THE PLANS REPRESENT THE BEST INFORMATION OBTAINABLE FOR DESIGN. LOCATION INFORMATION HAS BEEN OBTAINED FROM THE VARIOUS UTILITY COMPANIES AND IS EITHER FROM COMPANY RECORD DRAWINGS OR COMPANY PROVIDED FIELD LOCATIONS. THE PLAN LOCATIONS SHOWN ARE NOT GUARANTEED. ADDITIONAL EXISTING UTILITIES MAY ALSO BE ENCOUNTERED.

5. RUBBLE FROM THE REMOVAL OF MISCELLANEOUS STRUCTURES AND EXCESS EXCAVATION WHICH IS TO BE WASTED SHALL BE DISPOSED OF ON SITES TO BE PROVIDED BY THE CONTRACTOR. THESE SITES SHALL BE APPROVED BY THE ENGINEER AS TO SUITABILITY, APPEARANCE AND SITE LOCATION. LOCATIONS THAT, IN THE OPINION OF THE ENGINEER, WILL LEAVE AN UNSIGHTLY APPEARANCE WILL NOT BE APPROVED. ALL DISPOSAL SITES MUST BE APPROVED BY THE KANSAS DEPARTMENT OF HEALTH AND FLOOD PLAIN WOULD REQUIRE A KANSAS STATE BOARD OF AGRICULTURE PERMIT. ANY MATERIAL DUMPED IN WATERS OF THE UNITED STATES OR WETLANDS IS SUBJECT TO U.S. CORPS OF ENGINEERS PERMITTING REGULATIONS. ANY MATERIAL BURIED OR STOCKPILED BEYOND APPROVED CONSTRUCTION LIMITS WOULD REQUIRE ADDITIONAL ARCHAEOLOGICAL INVESTIGATIONS UNLESS BURIED IN A PREVIOUSLY APPROVED BORROW LOCATION.

6. THIS PROJECT INCLUDES A CERTAIN AMOUNT OF ROLL TYPE CURB CONSTRUCTION. ROLL CURBS SHALL BE DEPRESSED THROUGH ALL DRIVEWAY OPENINGS WHEN SUCH DRIVES ARE CONSTRUCTED AS A PART OF THE PROJECT. NO MORE THAN 2 DRIVES 20 FEET IN WIDTH OR EQUIVALENT COMBINATIONS THEREOF ARE TO BE CONSTRUCTED WITH THIS PROJECT.

7. TRANSITION CURB FROM FULL HEIGHT COMBINATION CURB AND GUTTER TO ROLL TYPE COMBINATION CURB AND GUTTER IS TO BE PAID AS BID FOR LINEAL FEET COMBINED CURB AND GUTTER (3 5/8" ROLL).

8. A SAW CUT OF AT LEAST ONE-HALF THE DEPTH OF THE EXISTING SURFACE COURSES OR ONE-FOURTH THE DEPTH OF THE EXISTING TOTAL PAVEMENT THICKNESS SHALL BE PROVIDED AT LOCATIONS WHERE PROPOSED CONSTRUCTION ABUTS AN EXISTING SURFACE OR PAVEMENT FOR WHICH PARTIAL REMOVAL OF THAT SURFACE OR PAVEMENT IS REQUIRED. SAW JOINT TO FACILITATE REMOVAL WITHIN THREE (3) FEET OF EXISTING JOINTS WILL NOT BE PERMITTED AND FOR SUCH INSTANCES THE LIMITS OF REMOVAL SHALL EXTEND TO THE EXISTING JOINT. SUCH SAW CUTS WILL NOT BE PAID FOR DIRECTLY AND THIS COST SHALL BE CONSIDERED AS SUBSIDIARY TO THE REMOVAL OF SURFACE OR PAVEMENT.

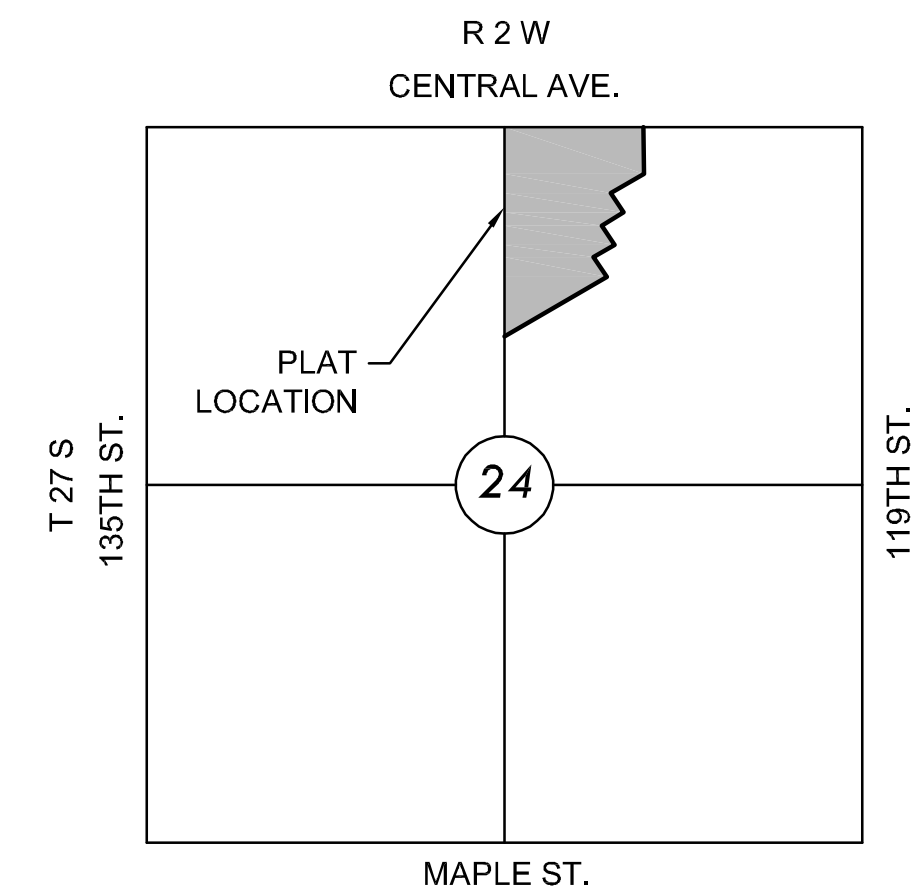
9. CONTRACTOR SHALL RESEED AND MULCH ALL DISTURBED AREAS. COST SHALL BE CONSIDERED SUBSIDIARY TO SITE RESTORATION.

10. DEVELOPER FOR THIS PROJECT IS:
SCHELLENBERG DEVELOPMENT
7926 W 21ST STREET
WICHITA, KS 67205
MARY SCHELLENBERG
JESSE SCHELLENBERG
316-854-0001

EARTHWORK SUMMARY

EXCAVATION	871 C.Y.
*COMPACTED FILL (95%)	725 C.Y.

*20% SHRINK/SWELL FACTOR ADDED



VICINITY MAP

No Scale

INDEX TO DRAWINGS

SHEET NO.	DESCRIPTION
1	TITLE SHEET
2-7	PAVING DETAILS
8-11	PAVING PLANS
12	BUBBLE MAP
13	EROSION CONTROL
14-18	BMP SHEETS
19-25	CROSS SECTIONS
26-27	FINAL PLAT

BENCHMARKS

- BM#1 CITY OF WICHITA BENCHMARK DISC ON SOUTHWEST CORNER OF CENTRAL & WHEATLAND, 24' WEST OF CENTERLINE WHEATLAND AND 36' S OF CENTERLINE CENTRAL.
ELEV.=1342.80 NAVD88
- BM#2 CHISELED SQUARE ON TOP OF CURB AT SOUTH END OF MEDIAN ISLAND ON BAY COUNTRY, 93' SOUTH OF CENTERLINE CENTRAL.
ELEV.=1342.77 NAVD88

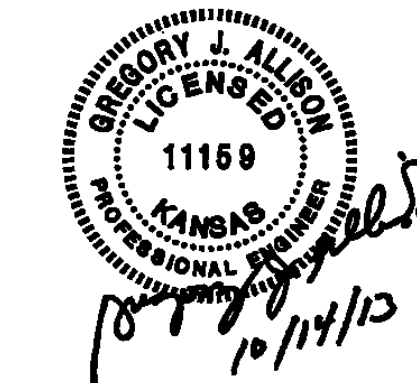
CONTROL POINTS

- CP #1 3/4" PIPE & ALUM CAP AT NW CORNER LOT 84, BLOCK 3, BAY COUNTRY ADDITION.
N=1687890.55, E=1604864.29
- CP#2 3/4" PEC PIPE 20 IN DEEP SET 5/8" MKEC OVER AT NE CORNER LOT 1, BLOCK 3, BAY COUNTRY ADDITION.
N=1687928.17, E=1605860.28
- CP#3 1/2" BAUGHMAN CLS-58 AT SE CORNER LOT 24, BLOCK 3, BAY COUNTRY ADDITION.
N=1686629.86, E=1605581.45
- CP#4 1/2" BAUGHMAN CLS-58 AT SW CORNER LOT 102, BLOCK 3, BAY COUNTRY ADDITION.
N=1686248.48, E=1604891.44

*MJ HARDEN COORDINATES

PROJECT LENGTH

JENNIE STREET	550 L.F.
JENNIE COURT	250 L.F.
JAAX STREET	700 L.F.



PAVING PLANS FOR BAY COUNTRY ADDITION WICHITA, KS

©2013 MKEC Engineering All Rights Reserved
www.mkec.com
These drawings and their contents, including, but not limited to, all concepts, designs, & ideas are the exclusive property of MKEC Engineering (MKEC), and may not be used or reproduced in any way without the express consent of MKEC.

TITLE SHEET

PROJECT NO.	472-85103	
DATE	OCT. 2013	
SCALE	1"=100'	
DESIGNED	DRAWN	CHECKED
SPE	SPE	GJA
NO.	REVISION	DATE
SHEET NO.	1 OF 27	