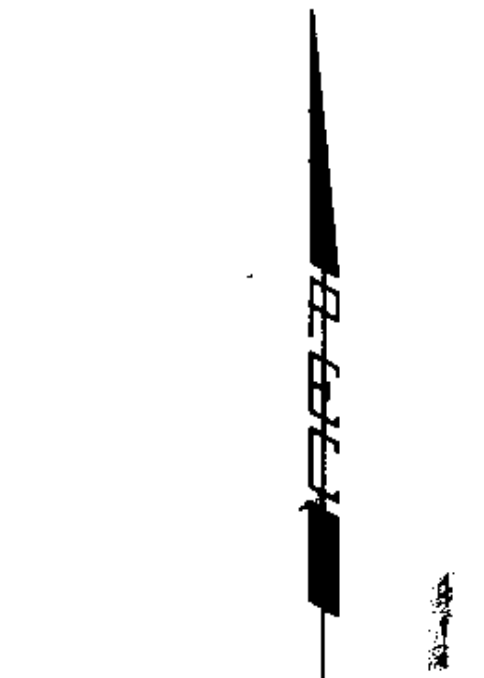
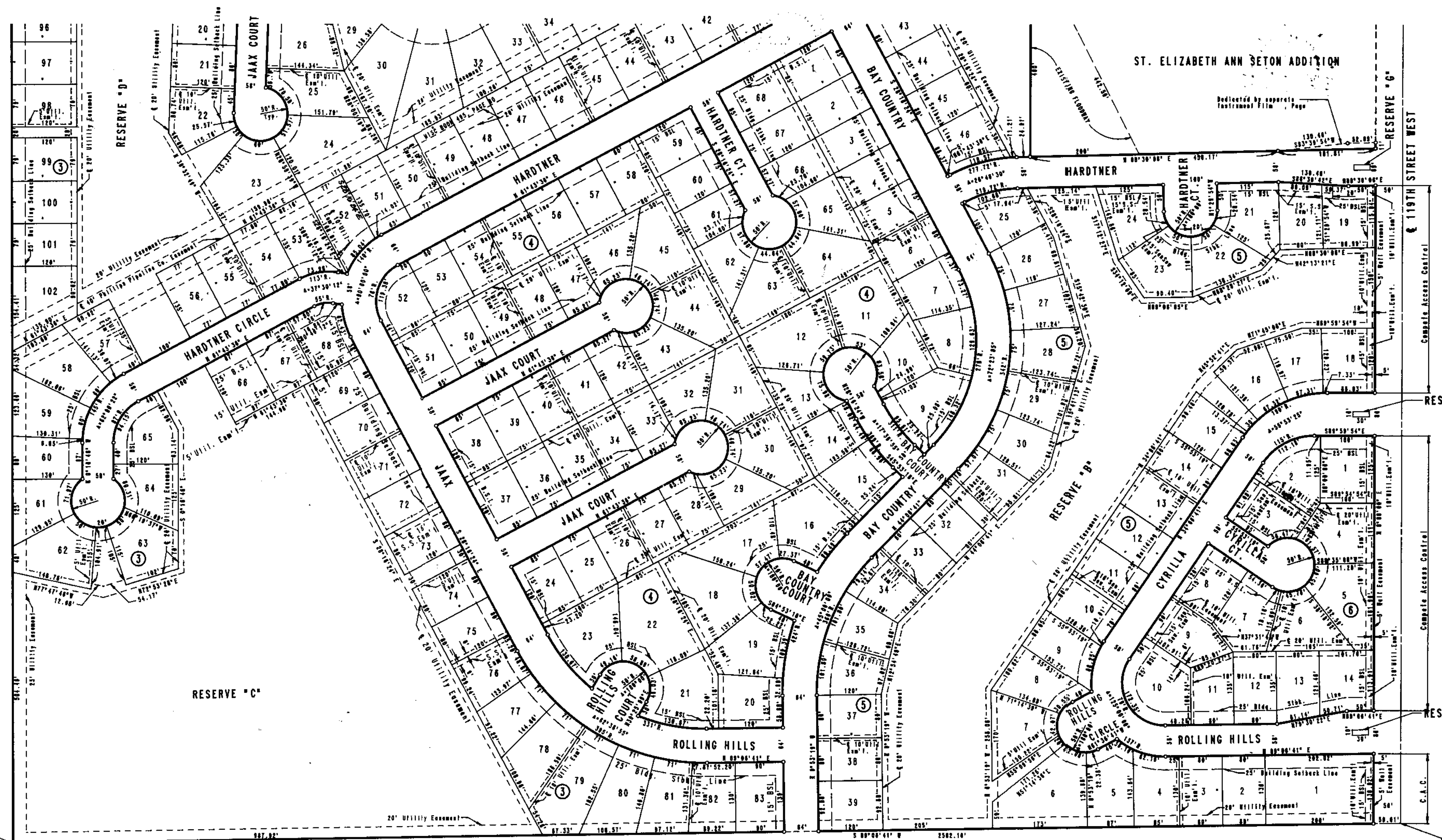


# BAY COUNTRY

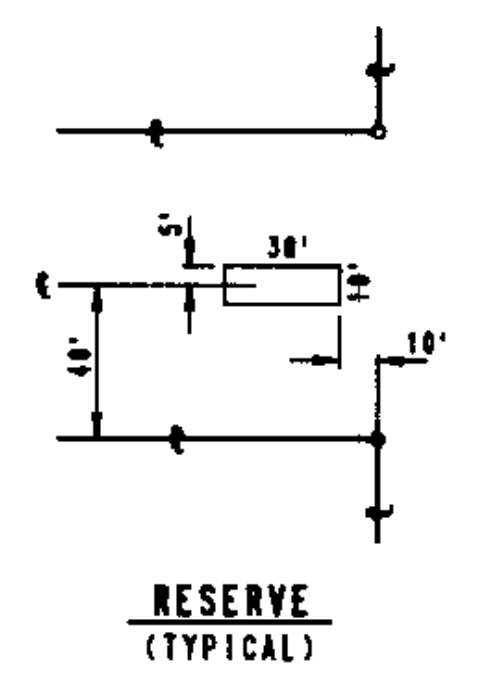
AN ADDITION TO WICHITA, SEDGWICK COUNTY, KANSAS



J:\PROJECTS\2013\1301010385\_COW BAY COUNTRY DEVELOPMENTS-CIVIL\CAD\PAV\13385\_P\PLATZ.DWG  
 PLOTTED: Tuesday, October 15, 2013 @ 02:28PM



SCALE: 1" = 100'  
 ○ IRON SET  
 C.A.C. - COMPLETE ACCESS CONTROL  
 B.S.L. - BUILDING SETBACK LINE  
 S.S. - SANITARY SEWER EASEMENT  
 D.W. - DISK 40" EAST AND 40" SOUTH  
 OF INTERSECTION AT 6' OF CENT  
 WITH E. OF 118TH STREET WEST  
 CITY DATUM ELEV. = 156.93



S.W. Cor. N.E. 1/4  
 Sec. 24, T27S, R2W  
 of the 6th P.M.

SANITARY SEWER PLANS FOR

## BAY COUNTRY ADDITION

WICHITA, KS

©2013  
 MKEC Engineering  
 All Rights Reserved  
 www.mkec.com  
 These drawings and their contents, including, but not limited to, all concepts, designs, & ideas are the exclusive property of MKEC Engineering (MKEC), and may not be used or reproduced in any way without the express consent of MKEC.

**FINAL PLAT 2**

PROJECT NO.	472-85103
DATE	OCT. 2013
SCALE	1"=100'
DESIGNED	MKEC
DRAWN	MKEC
CHECKED	MKEC
#	###/###
NO.	REVISION DATE

SHEET NO.  
 27 OF 27