

MH 5347-411
 Replace MH Frame & Cover
 Approx depth = 5.5 ft

Remove 300 lf of 8" Pipe
 Install 300 lf of 8" Pipe
 Estimated 11 Service
 Reconnections (4")

MH 5347-408
 Remove Manhole
 Construct Shallow Manhole
 Approx depth = 5.2 ft

MH 5347-420
 Remove Manhole
 Construct Shallow Manhole
 Approx depth = 4.0 ft

5347-422CO
 (cleanout - not found)

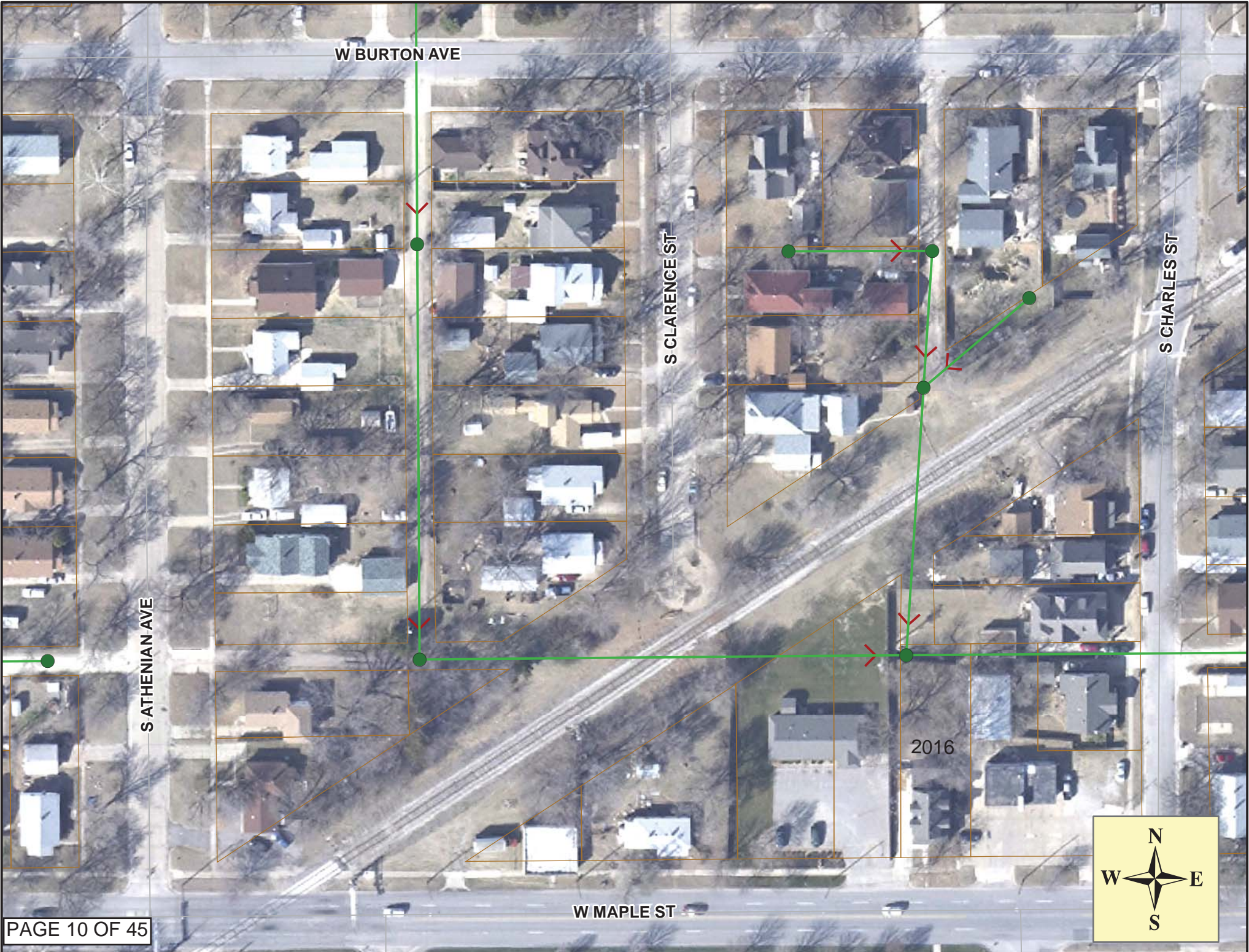
Remove 101 lf of 8" Pipe
 Install 101 lf of 8" Pipe
 Estimated 2 Service
 Reconnections (4")

5347-418U
 (underground union)
 Construct Shallow Manhole
 (where the pipes meet)
 Depth unknown

MH 5347-406
 2016 W. Maple
 Replace MH Frame & Cover
 Approx depth = 5.0 ft

Point Repair: Remove and replace approx
 14 lf of 8" pipe from 299 feet east of MH
 5347-408 to 313 lf east of MH 5347-408.
 The repair will include the service
 reconnection for 2018 W. Maple.





W BURTON AVE

SATHENIAN AVE

S CLARENCE ST

S CHARLES ST

W MAPLE ST

2016





Video Inspection Master Report

9/6/2013

2:55 PM

US Structure: 5347-411 212 S ATHENIAN AVE Date Insp: 6/10/2013 Basin: C07G
 DS Structure: 5347-408 244 S ATHENIAN AVE Dir Televised: Downstream To Upstream

Pipe Information

Shape: Round	Length Status:	Project No. : B-060
Dia/Ht: 8	Material: VCP	Overall Cond: Poor
Length: 302.8	Slope: 0.215	Surface: Alley Unpaved

Obs. #	VTR Counter	Distance	Location	Description	Rating	Ratings			Remain (gpm)
						Obsrvd (gpm)	Est. (gpm)	Struct Clean	
1		0.0	5347-408	DS Manhole	1	TV against the flow			
2		6.3		Crack-Radial	1				
3		28.9		Sealed Off Wye	1				
4		31.6		Sealed Off Wye	1				
5		46.9		Roots	1				
6		51.9		Roots	1				
7		54.4		Sealed Off Wye	1				
8		54.5		Roots	2				
9		57.0		Sealed Off Wye	1				
10		57.2		Roots	2				
11		59.9	228 S ATHENIAN	PVC Break-In Conn	1				
12		67.4		Roots	2				
13		72.6		Roots	1				
14		80.0	229 S CLARENCE	Break-In Conn	5	BROKEN AT MAIN			
15		82.8		Sealed Off Wye	1				
16		93.3		Crack-Radial	3				
17		98.4		Observation Hole	1				
18		98.6		Crack-Horizontal	3				
19		105.9		Sealed Off Wye	1				
20		105.9		Crack-Radial	3				
21		108.5	226 S ATHENIAN	Wye Service	1				
22		108.5		Crack-Radial	3				
23		118.6		Crack-Radial	2				
24		121.7		Crack-Horizontal	4				
25		124.2		Crack-Horizontal	3				
26		131.4	225 S CLARENCE	Break-In Conn	1	poor cond.			
27		131.8		Crack-Radial	4				
28		134.1		Sealed Off Wye	1				
29		144.3		Crack-Radial	3				
30		152.6		Broken Pipe	2				

Video Inspection Master Report

9/6/2013

2:55 PM

US Structure: 5347-411 212 S ATHENIAN AVE Date Insp: 6/10/2013 Basin: C07G
 DS Structure: 5347-408 244 S ATHENIAN AVE Dir Televised: Downstream To Upstream

31	157.0	221 S CLARENCE	Wye Service	2	ROOTS
32	157.0		Crack-Radial	3	
33	159.7		Sealed Off Wye	1	
34	159.7		Crack-Radial	2	
35	167.4		Crack-Radial	2	
36	182.8		Sealed Off Wye	1	
37	182.8		Broken Pipe	4	
38	187.9	222 S ATHENIAN	Break-In Conn	1	
39	196.2		Broken Pipe	5	
40	198.1		Observation Hole	1	
41	199.0		Broken Pipe	4	
42	201.3		Crack-Radial	4	
43	206.1		Crack-Radial	3	
44	208.4		Sealed Off Wye	1	
45	208.6		Broken Pipe	4	
46	210.9		Sealed Off Wye	1	
47	212.1		Broken Pipe	4	
48	215.2	220 S ATHENIAN	Break-In Conn	5	BROKEN AT MAIN
49	223.9		Crack-Radial	2	
50	226.2		Crack-Radial	3	
51	233.9	217 S CLARENCE	Wye Service	2	ROOTS
52	236.6		Sealed Off Wye	1	
53	249.2		Crack-Radial	1	
54	259.4		Sealed Off Wye	1	
55	262.1	212 S ATHENIAN	Break-In Conn	1	PVC service to VCP wye - LML
56	276.8		Mat. Chngs to PVC	1	
57	287.1	211 S CLARENCE	PVC Break-In Conn	1	
58	288.0	211 S CLARENCE	PVC Break-In Conn	1	
59	290.3		Mat. Chngs to VCP	1	
	295.0	Offset Joint / PVC pipe begins PVC pipe may sit an inch or so higher than the clay pipe at the offset – LML			
60	297.5	5347-411	US Manhole	1	PVC trough in MH - LML

Video Inspection Master Report

9/6/2013

2:56 PM

US Structure: 5347-408 **244 S ATHENIAN AVE** **Date Insp:** 6/10/2013 **Basin:** C07G
DS Structure: 5347-406 **2016** W. MAPLE **Dir Televised:** Upstream To Downstream

Pipe Information

Project No. : B-056 **Dia:** 8 **Material:** VCP **Length:** 349.0 **Overall Cond:** Very Poor

Obs. #	VTR Counter	Distance	Location	Description	Rating	Ratings			Remain (gpm)
						Obsrvd (gpm)	Est. (gpm)	Struct Clean	
1		0.0	5347-408	US Manhole	1				
2		3.0		Sealed Off Wye	1				
3		11.4		Crack-Radial	1				
4		57.6		Crack-Radial	2				
5		62.4		Crack-Radial	3				
6		67.5		Crack-Radial	3				
7		72.6		Crack-Radial	3				
8		80.1		Roots	1				
9		82.9		Roots	2				
10		85.6		Roots	2				
11		98.4		Crack-Radial	3				
12		103.0		Broken Pipe	4				
13		106.0		Crack-Radial	2				
14		111.4		Observation Hole	1				
15		113.7		Crack-Radial	5				
16		131.1		Roots	1				
17		134.0		Roots	2				
18		136.5		Roots	1				
19		139.2		Roots	2				
20		144.3		Crack-Radial	3				
21		175.1		Sag	1				
22		175.1		Sag	4				
23		193.5		Crack-Radial	3				
24		200.4	ROOTS	Wye Service	4		service connection		
25		214.6		Crack-Radial	2				
26		217.2		Crack-Radial	3				
27		222.7		Observation Hole	1				
28		224.8		Crack-Radial	3				
29		237.3		Sealed Off Wye	1				
30		254.3		Crack-Radial	3				
31		263.5		Sealed Off Wye	1				
32		290.3		Wye Service	1		service connection		

33	300.1	2018 W. Maple	Break-In Conn	1	service connection – poor cond - LML
34	303.8	Offset Joint	Broken Pipe	5	pipe missing in invert - LML
35	305.8		Sealed Off Wye	1	
36	307.4		Broken Pipe	5	Hole in south side of pipe -LML
	310.0		Broken Pipe		Small hole in north side of pipe @ joint -LML
<u>NEEDS A POINT REPAIR: 299' TO 313' DS OF MH 5347-408 - LML</u>					

37	316.5		Sealed Off Wye	1	
38	324.6		Mat. Chngs to PVC	1	
39	328.8		Mat. Chngs to VCP	1	
40	340.3		Sealed Off Wye	1	
41	346.0		5347-406 DS Manhole	1	

Video Inspection Master Report

9/9/2013

8:16 AM

US Structure: **5347-420** 2009 W BURTON Date Insp: **6/10/2013** Basin: **C07G**
 DS Structure: **5347-418U** 212 S CLARENCE Dir Televised:Upstream To Downstream

Pipe Information

Shape: Round Length Status: Project No. : B-059
 Dia/Ht: 8 Material: VCP Index:
 Length: 103.5 Slope: 0.202 Surface:

Obs. #	VTR Counter	Distance	Location	Description	Rating	Obsrvd (gpm)	Ratings			Remain (gpm)
							Est. (gpm)	Struct	Clean	
1		0.0	5347-420	US Manhole	1					
2		26.3		Crack-Radial	2					
3		36.9		Crack-Radial	2					
4		38.2		Sealed Off Wye	1					
5		39.3		Crack-Radial	2					
6		44.6		Crack-Horizontal	2					
7		71.7	218 S CLARENCE	Wye Service	5					BROKEN AT FIRST JOINT / small hole -LML
8		90.3		Crack-Radial	5					
9		94.7	220 S CLARENCE	Wye Service	1					
10		95.9		Broken Pipe	2					
11		99.3		Observation Hole	1					
12		100.8	Underground Union	DS Structure	3					Underground Union facing east. Could be 6" or 8" pipe. Pipe is cracked at the union. -LML

Need to construct a manhole over this 8" pipe where it meets the union pipe coming in from the east - LML