



Arkansas River

McLean Blvd

MH 5347-267
Replace MH Frame & Cover
Est. MH depth = 4.5 ft

Remove 300 lf of 8" Pipe
Install 300 lf of 8" Pipe
Estimated 7 Service Reconnection (4")
Estimated 7 Service Reconnection (6")

MH 5347-264
Remove Manhole
Construct Shallow Manhole
Approx MH depth = 2.3 ft

Elizabeth

Martinson

Exposition

Dodge

(unpaved alley)

532

533

502

501

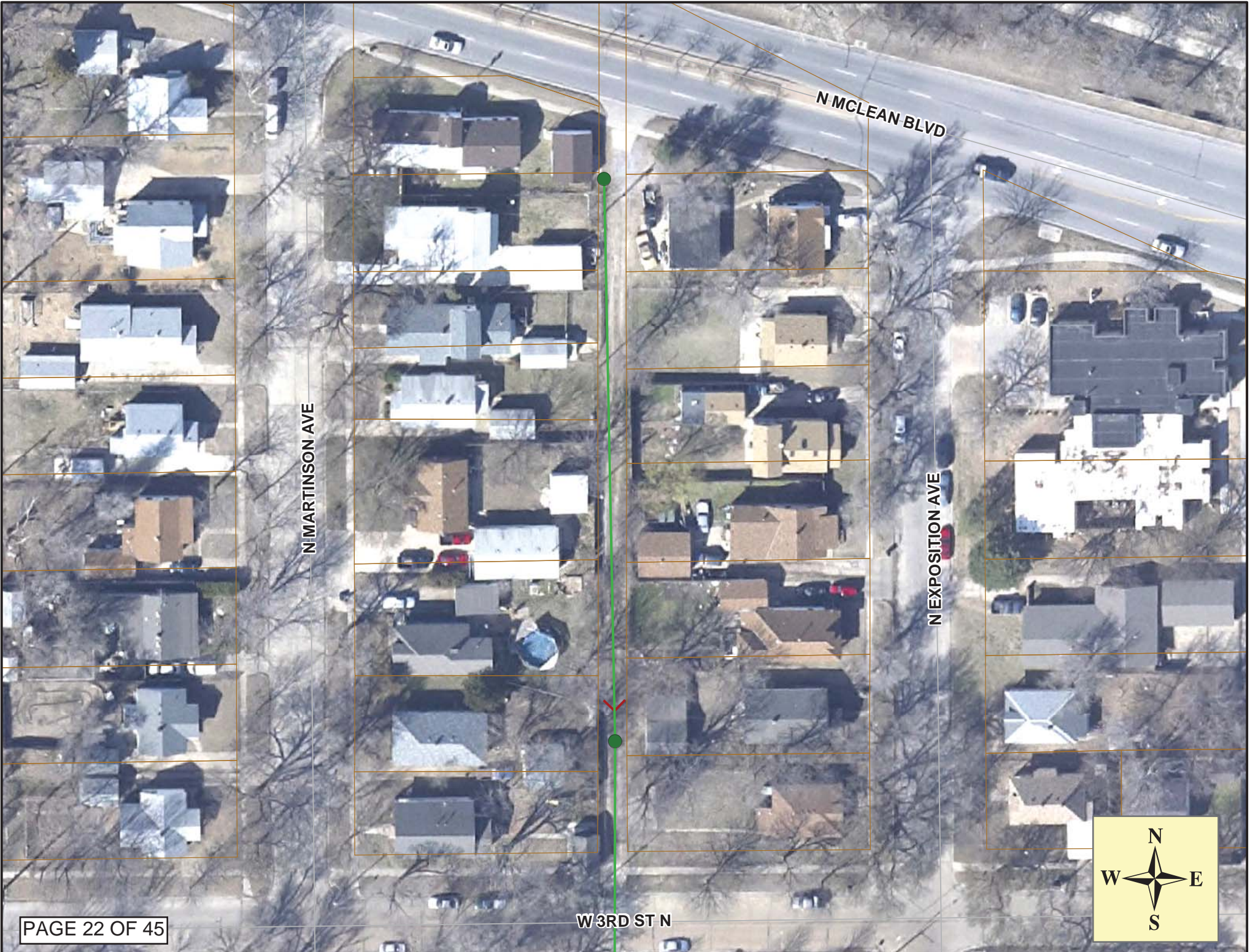
300'

300'

3rd Street North

SITE 5

PAGE 21 OF 45



N MCLEAN BLVD

N MARTINSON AVE

N EXPOSITION AVE

W 3RD ST N





Standing south of McLean Blvd, looking south.
Manhole 5347-267 (shown) is at the far west side of the alley.

Video Inspection Master Report

9/5/2013

2:18 PM

US Structure: 5347-267 532 N MARTINSON ST Date Insp: 6/7/2013 Basin: C07B
 DS Structure: 5347-264 504 N MARTINSON AVE Dir Televised:Upstream To Downstream

Pipe Information

Project No. : B-036 Dia/Ht: 8 Material: VCP Length: 299.0 Surface: Alley Unpaved

| Obs. # | VTR Counter | Distance | Location | Description | Rating | Obsrvd (gpm) | Ratings | | | Remain (gpm) |
|--------|-------------|----------|---|-----------------------------|--------|--------------|------------|--------|-------|--|
| | | | | | | | Est. (gpm) | Struct | Clean | |
| 1 | | 0.0 | 5347-267 | US Manhole | 1 | | | | | |
| | | 10.0 | Offset joint / pipe may be slightly higher here than within the first 10 feet | | | | | | | |
| 2 | | 12.3 | 532 N MARTINSON | Wye Service | 1 | | | | | |
| 3 | | 13.4 | | Crack-Radial | 3 | | | | | |
| 4 | | 13.9 | 537 N EXPOSITION | Break-In Conn | 2 | 6" | | | | |
| 5 | | 36.2 | | Crack-Radial | 3 | | | | | |
| 6 | | 37.6 | 528 N MARTINSON | Wye Service | 1 | | | | | |
| 7 | | 38.6 | | Crack-Radial | 3 | | | | | |
| 8 | | 40.3 | 533 N EXPOSITION | Wye Service | 1 | | | | | |
| 9 | | 58.9 | | Crack-Radial | 3 | | | | | |
| 10 | | 60.4 | | Wye Service SEALED OFF | 1 | | | | | |
| 11 | | 61.1 | | Crack-Radial | 3 | | | | | |
| 12 | | 62.9 | 521 N EXPOSITION | Wye Service | 1 | | | | | |
| 13 | | 86.1 | 526 N MARTINSON | Wye Service | 1 | | | | | |
| 14 | | 88.6 | | Wye Service SEALED OFF | 1 | | | | | |
| 15 | | 90.3 | | Observation Hole SEALED OFF | 1 | | | | | |
| 16 | | 94.2 | | Crack-Radial | 3 | | | | | |
| 17 | | 96.2 | | Mat. Chngs to PVC | 1 | | | | | |
| 18 | | 102.9 | | Mat. Chngs to VCP | 1 | | | | | |
| 19 | | 105.4 | | Crack-Radial | 3 | | | | | |
| 20 | | 106.9 | | Crack-Horizontal | 3 | | | | | |
| 21 | | 109.5 | | Broken Pipe NEEDS REPAIR | 4 | | | | | Invert is shifted - LML |
| 22 | | 111.2 | 524 N MARTINSON | Break-In Conn NEEDS REPAIR | 4 | | | | | Service breaking down / cracked pipe - LML |
| 23 | | 112.3 | | Broken Pipe NEEDS REPAIR | 4 | | | | | |
| 24 | | 113.7 | | Wye Service SEALED OFF | 3 | | | | | Cavity where wye is busted - LML |
| 25 | | 115.2 | | Crack-Horizontal | 3 | | | | | |
| 26 | | 117.5 | | Crack-Horizontal | 3 | | | | | |
| 27 | | 119.4 | Joint | Offset | 2 | | | | | 102' to 119' is all badly cracked pipe - LML |
| 28 | | 119.7 | | Crack-Radial | 3 | | | | | |
| 29 | | 136.4 | | Wye Service SEALED OFF | 1 | | | | | |
| 30 | | 139.0 | 517 N EXPOSITION | Wye Service | 1 | 6" | | | | |
| 31 | | 139.8 | | Roots | 2 | | | | | |
| 32 | | 140.6 | | Crack-Horizontal | 2 | | | | | |
| 33 | | 142.8 | | Crack-Horizontal | 3 | | | | | |
| 34 | | 145.3 | | Crack-Horizontal | 3 | | | | | |
| 35 | | 147.3 | Joint | Offset | 3 | | | | | |
| 36 | | 150.0 | | Crack-Radial | 3 | | | | | |
| 37 | | 151.4 | | Crack-Horizontal | 2 | | | | | |
| 38 | | 153.0 | | Crack-Horizontal | 2 | | | | | |

Video Inspection Master Report

9/5/2013

2:18 PM

US Structure: 5347-267 532 N MARTINSON ST Date Insp: 6/7/2013 Basin: C07B
 DS Structure: 5347-264 504 N MARTINSON AVE Dir Televised:Upstream To Downstream

| | | | | | |
|----|-------|------------------|-----------------------------|---|--------------------------------|
| 39 | 155.9 | | Crack-Horizontal | 2 | |
| 40 | 157.7 | | Crack-Horizontal | 3 | |
| 41 | 159.3 | 516 N MARTINSON | Wye Service | 1 | 6" ½ blocked with roots - LML |
| 42 | 160.2 | | Crack-Radial | 3 | |
| 43 | 161.9 | | Wye Service SEALED OFF | 1 | |
| 44 | 167.9 | | Crack-Radial | 3 | Small hole in invert - LML |
| 45 | 172.5 | Joint | Offset | 2 | Small hole in invert - LML |
| 46 | 183.2 | | Crack-Horizontal | 2 | |
| 47 | 185.0 | | Wye Service SEALED OFF | 1 | |
| 48 | 187.7 | 511 N EXPOSITION | Wye Service | 1 | 6" |
| 49 | 188.2 | | Crack-Radial | 3 | |
| 50 | 198.7 | | Observation Hole SEALED OFF | 2 | |
| 51 | 200.2 | | Crack-Horizontal | 2 | |
| 52 | 209.8 | | Wye Service SEALED OFF | 1 | |
| 53 | 210.5 | | Crack-Radial | 3 | |
| 54 | 212.3 | | Wye Service SEALED OFF | 1 | |
| 55 | 215.6 | | Crack-Radial | 2 | |
| 56 | 230.6 | | Crack-Radial | 3 | |
| 57 | 234.6 | | Wye Service SEALED OFF | 1 | |
| 58 | 235.5 | | Crack-Radial | 3 | |
| 59 | 237.4 | 509 N EXPOSITION | Wye Service | 1 | 6" |
| 60 | 238.0 | | Crack-Radial | 3 | |
| 61 | 243.1 | | Crack-Radial | 2 | |
| 62 | 250.5 | | Crack-Radial | 2 | |
| 63 | 252.8 | Joint | Offset | 2 | |
| 64 | 253.2 | | Crack-Radial | 3 | |
| 65 | 255.7 | | Crack-Radial | 2 | |
| 66 | 258.3 | | Crack-Radial | 2 | |
| 67 | 260.0 | 510 N MARTINSON | Wye Service ROOTS | 2 | 6" |
| 68 | 262.6 | | Wye Service SEALED OFF | 1 | |
| 70 | 265.5 | | Crack-Radial | 3 | |
| 71 | 275.9 | | Crack-Radial | 2 | |
| 72 | 277.6 | 505 N EXPOSITION | Wye Service NEEDED REPAIR | 3 | 6" ½ blocked with roots - LML |
| 73 | 278.7 | | Broken Pipe | 3 | |
| 74 | 280.9 | | Crack-Radial | 3 | |
| 75 | 283.5 | | Crack-Radial | 2 | |
| 76 | 285.3 | 504 N MARTINSON | Wye Service | 1 | 6" |
| 77 | 287.7 | | Wye Service SEALED OFF | 1 | |
| 78 | 288.6 | | Crack-Radial | 3 | |
| 79 | 291.0 | | Crack-Radial | 2 | |
| 80 | 293.5 | | Crack-Radial | 3 | |
| 81 | 299.3 | 5347-264 | DS Manhole | 3 | Overall Cond: Very Poor |

Wyes all appear to be 6" on the main. It is unclear whether the service pipes are 6" also or if they reduce to 4" outside of the main. - LML