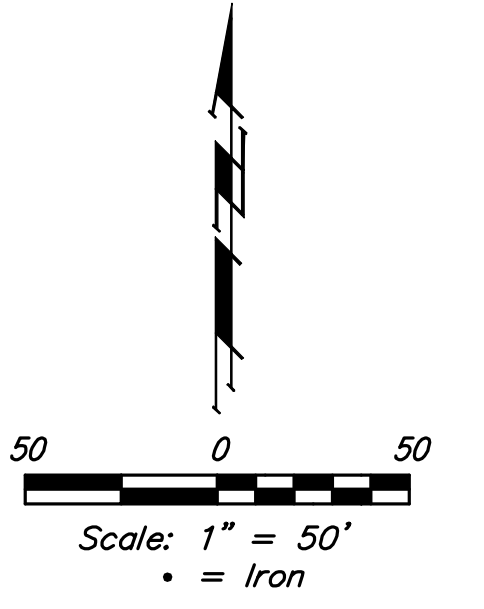
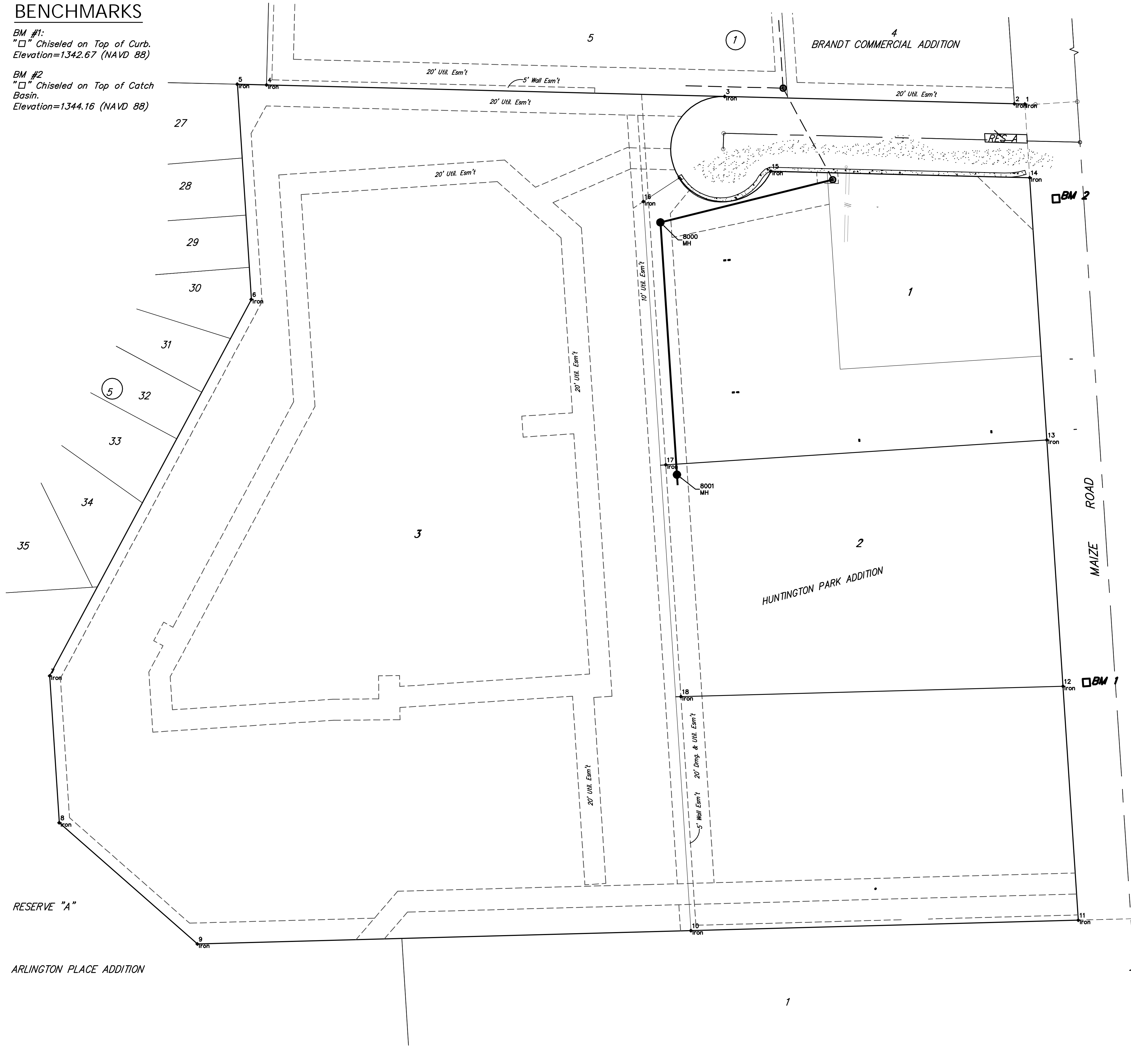


BENCHMARKS

BM #1:
"□" Chiseled on Top of Curb.
Elevation=1342.67 (NAVD 88)

BM #2:
"□" Chiseled on Top of Catch
Basin.
Elevation=1344.16 (NAVD 88)



Point Table			
Point #	Northing	Easting	Description
1	4992.77	5285.82	Iron
2	4993.03	5275.79	Iron
3	5000.01	5000.03	Iron
4	5010.94	4563.91	Iron
5	5011.63	4536.04	Iron
6	4806.87	4549.34	Iron
7	4448.76	4357.44	Iron
8	4308.98	4366.56	Iron
9	4193.63	4498.11	Iron
10	4206.34	4967.95	Iron
11	4216.30	5336.70	Iron
12	4438.82	5322.12	Iron
13	4673.17	5306.76	Iron
14	4922.72	5290.31	Iron
15	4928.89	5043.97	Iron
16	4900.01	4922.59	Iron
17	4649.54	4943.98	Iron
18	4429.00	4958.40	Iron
8000	4880.19	4938.91	MH
8001	4640.21	4954.61	MH

Baughman

ENGINEERING | SURVEYING | PLANNING | LANDSCAPE ARCHITECTURE

Huntington Park Addition

COORDINATES

Sanitary Sewer Improvements

PROJECT NUMBER
468-84883 OCA 744349

REVISIONS:

DESIGN
PAT

APPROVED
8/14/13

SCALE
Noted

SHEET
10 of 11

DRAWN
JAK

DATE
8/14/13

E:\Projects\Greene Vision Site Plan (13-06-E914)\Engineering\Petition\SS.dwg