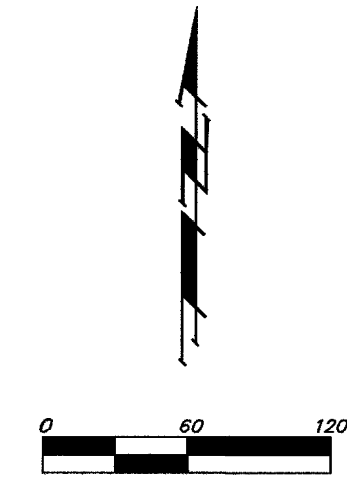


HUNTINGTON PARK ADDITION WICHITA, SEDGWICK COUNTY, KANSAS

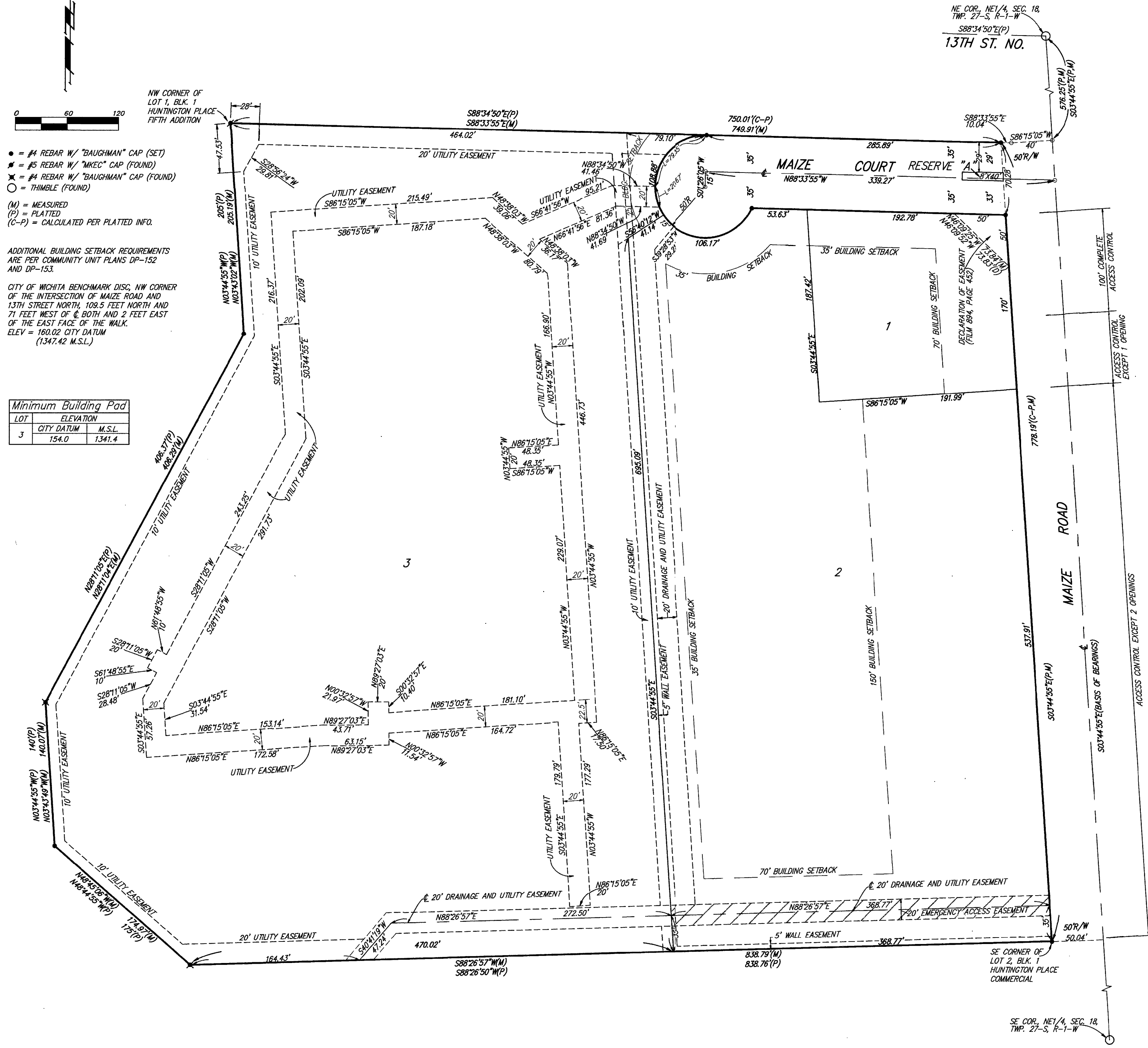


- = #4 REBAR W/ "BAUGHMAN" CAP (SET)
- = #5 REBAR W/ "MKEC" CAP (FOUND)
- = #4 REBAR W/ "BAUGHMAN" CAP (FOUND)
- = TRIMBLE (FOUND)
- (M) = MEASURED
- (P) = PLATTED
- (C-P) = CALCULATED PER PLATTED INFO.

ADDITIONAL BUILDING SETBACK REQUIREMENTS ARE PER COMMUNITY UNIT PLANS DP-152 AND DP-153.

CITY OF WICHITA BENCHMARK DISC, NW CORNER OF THE INTERSECTION OF MAIZE ROAD AND 13TH STREET NORTH, 102.5 FEET NORTH AND 71 FEET WEST OF & BOTH AND 2 FEET EAST OF THE EAST FACE OF THE WALK.
ELEV = 160.02 CITY DATUM
(1347.42 M.S.L.)

LOT	ELEVATION
3	154.0
	1341.4



State of Kansas) SS We, Baughman Company, P.A., Surveyors in Sedgwick County and State do hereby certify that we have surveyed and platted "HUNTINGTON PARK ADDITION", Wichita, Sedgwick County, Kansas, and that the accompanying plat is a true and correct exhibit of the property surveyed, described as follows: A replat of Lots 1 and 2, Block 1, Huntington Place Commercial, an Addition to Wichita, Sedgwick County, Kansas, together with Lot 1, Block 1, Huntington Place 5th Addition, an Addition to Wichita, Sedgwick County, Kansas.

All being situated in the NE1/4 of Sec. 18, Twp. 27-S, R-1-W of the 6th P.M., Sedgwick County, Kansas.
Existing public easements and dedications being vacated by virtue of K.S.A. 12-512(b).
Baughman Co., P.A.

Michael G. Conrey
Michael G. Conrey
15-27110-2897
REGISTERED LAND SURVEYOR

Know all men by these presents that we, the undersigned, have caused the land in the surveyors certificate to be platted into Lots and a Street to be known as "HUNTINGTON PARK ADDITION", Wichita, Sedgwick County, Kansas. The utility easements are hereby granted as indicated for the construction and maintenance of all public utilities. The drainage and utility easements are hereby granted as indicated for drainage purposes and for the construction and maintenance of all public utilities. The wall easements are hereby granted as indicated for the construction and maintenance of a private wall and utility main lines and service lines shall be allowed to cross these easements. The emergency access easement is hereby granted as indicated for emergency access purposes. No walls, buildings, or any other obstructions shall be constructed or placed on or within this easement, except for a gate to be approved by the City of Wichita Fire Department. Reserve "A" is hereby reserved for landscaping, open space, streets, utilities, and monument signs. Reserve "A" shall be owned and maintained by the owner of Lot 3. The street is hereby dedicated to and for the use of the public. All abutters rights of access to or from Maize Road over and across the east line of Lots 1 and 2, are hereby granted to the City of Wichita, Kansas provided, however, that said Lot 1 shall have access to Maize Road at one location over all except the north 100 feet of the east line of said Lot 1, and that said Lot 2 shall have access to Maize Road at two locations, all as shall be determined by the City Engineer of the City of Wichita, Kansas. The Minimum Building Pad Elevation for the lowest opening to the structures on Lot 3 shall be 154.0 City Datum, (1341.4 M.S.L.).

Huntington Park Apartments, L.L.C.
Michael G. Loveland, Member
Maize Road Partnership
Michael G. Loveland, Partner
Mark B. Hutton, Partner
Andrew W. Hutton, Partner

State of Kansas) SS The foregoing instrument acknowledged before me, this 31st day of October, 1997, by Michael G. Loveland, Member of Huntington Park Apartments, L.L.C., on behalf of the company.

Nancy R. Weber Notary Public
NANCY R. WEBER
NOTARY PUBLIC
STATE OF KANSAS
My App. Exp. 6-9-99

State of Kansas) SS The foregoing instrument acknowledged before me, this 31st day of October, 1997, by Michael G. Loveland, Partner in Maize Road Partnership, on behalf of the partnership.

Nancy R. Weber Notary Public
NANCY R. WEBER
NOTARY PUBLIC
STATE OF KANSAS
My App. Exp. 6-9-99

State of Kansas) SS The foregoing instrument acknowledged before me, this 31st day of October, 1997, by Mark B. Hutton, Partner in Maize Road Partnership, on behalf of the partnership.

Nancy R. Weber Notary Public
NANCY R. WEBER
NOTARY PUBLIC
STATE OF KANSAS
My App. Exp. 6-9-99

State of Kansas) SS The foregoing instrument acknowledged before me, this 31st day of October, 1997, by Andrew W. Hutton, Partner in Maize Road Partnership, on behalf of the partnership.

Nancy R. Weber Notary Public
NANCY R. WEBER
NOTARY PUBLIC
STATE OF KANSAS
My App. Exp. 6-9-99

This plat of "HUNTINGTON PARK ADDITION", Wichita, Sedgwick County, Kansas has been submitted to and approved by the Wichita, Sedgwick County Metropolitan Area Planning Commission, Wichita, Kansas.
Dated this 21st day of November, 1996.
Wichita-Sedgwick County Metropolitan Area Planning Commission

John C. Frye Chairman
John C. Frye
Martin S. Krout Secretary
Martin S. Krout

This plat approved and all dedications shown hereon accepted by the City Council of the City of Wichita, Kansas, this 9th day of December, 1997.

Bob Knight Mayor
Bob Knight
Pat Burnett City Clerk
Pat Burnett

Entered on transfer record this 13th day of January, 1998.
James Allgood County Clerk
James Allgood

State of Kansas) SS This is to certify that this plat has been filed for record in the office of the Register of Deeds, this 13th day of January, 1998, at 1:00 o'clock P.M., and is duly recorded.
Larry Unsolver Register of Deeds
Larry Unsolver
Michael D. Hurtt Deputy
Michael D. Hurtt

We the undersigned, holders of a mortgage on the above described property, do hereby consent to this plat of "HUNTINGTON PARK ADDITION", Wichita, Sedgwick County, Kansas.
Intrust Bank, N.A.

Bruce A. Long VICE-PRES.
BRUCE A. LONG

State of Kansas) SS The foregoing instrument acknowledged before me, this 31st day of October, 1997, by BRUCE A. LONG, VICE PRESIDENT of the Intrust Bank, N.A., on behalf of the bank.
Mary McDaniel Notary Public
MARY MCDANIEL
My App. Exp. 06/25/2000

We the undersigned, holders of a mortgage on the above described property, do hereby consent to this plat of "HUNTINGTON PARK ADDITION", Wichita, Sedgwick County, Kansas.
Central National Bank

Kevin Klein President-Wichita
KEVIN KLEIN

State of Kansas) SS The foregoing instrument acknowledged before me, this 31st day of October, 1997, by Kevin Klein, President-Wichita of the Central National Bank, on behalf of the bank.

Shelby Minnis Notary Public
SHELBY MINNIS
My App. Exp. 09/20/2000

We the undersigned, holders of a mortgage on the above described property, do hereby consent to this plat of "HUNTINGTON PARK ADDITION", Wichita, Sedgwick County, Kansas.
Wells Fargo Bank, N.A.

David W. Harris V.P.
DAVID W. HARRIS

State of Kansas) SS The foregoing instrument acknowledged before me, this 31st day of October, 1997, by David W. Harris, V.P. of the NationsBank, N.A., on behalf of the bank.

Kimberly J. Bengtson Notary Public
KIMBERLY J. BENGTSON
My App. Exp. 9-9-2001

