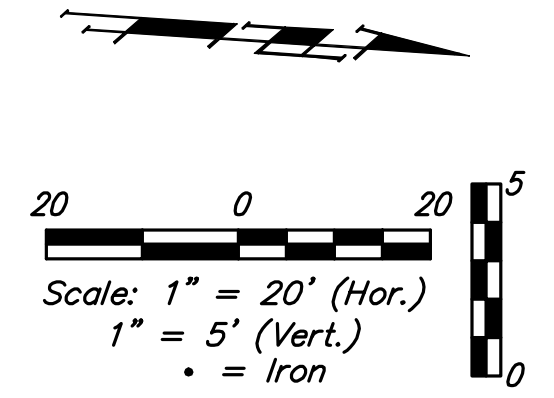


BENCHMARKS

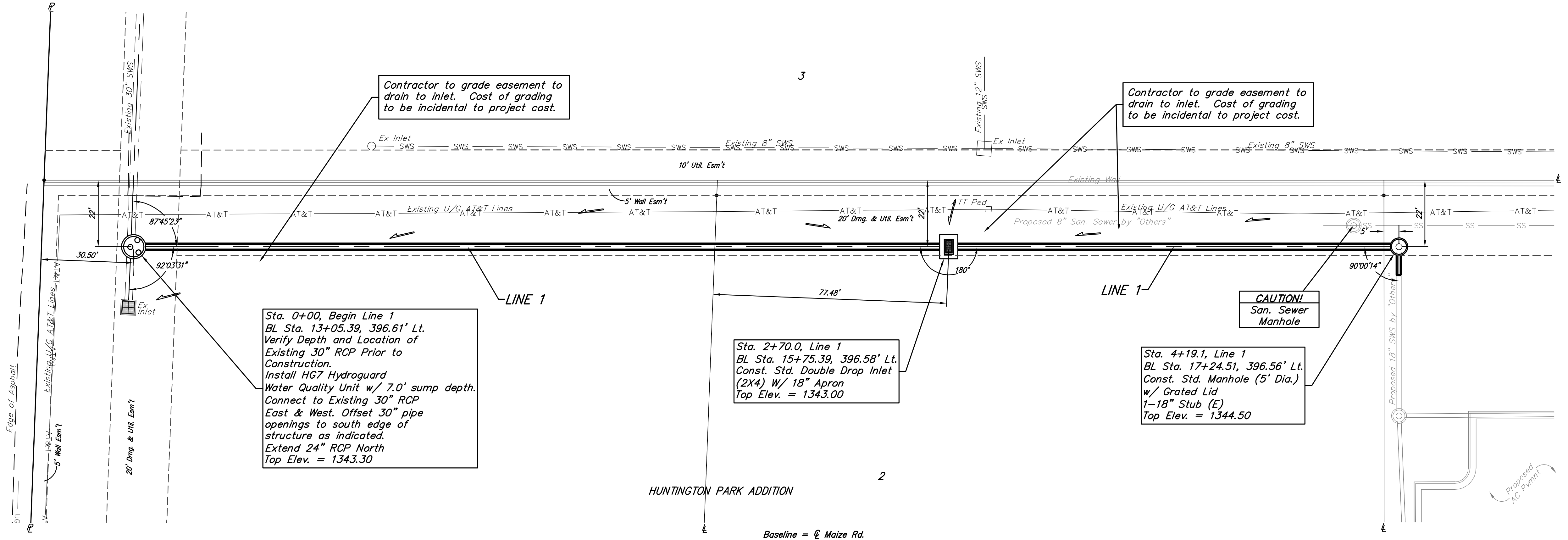
BM #1:
 "□" Chiseled on Top of Curb.
 Elevation=1342.67 (NAVD 88)

BM #2:
 "□" Chiseled on Top of Catch Basin.
 Elevation=1344.16 (NAVD 88)



ARLINGTON PLACE ADDITION

1



Sta. 0+00, Begin Line 1
 BL Sta. 13+05.39, 396.61' Lt.
 Verify Depth and Location of Existing 30" RCP Prior to Construction.
 Install HG7 Hydroguard Water Quality Unit w/ 7.0' sump depth. Connect to Existing 30" RCP East & West. Offset 30" pipe openings to south edge of structure as indicated. Extend 24" RCP North Top Elev. = 1343.30

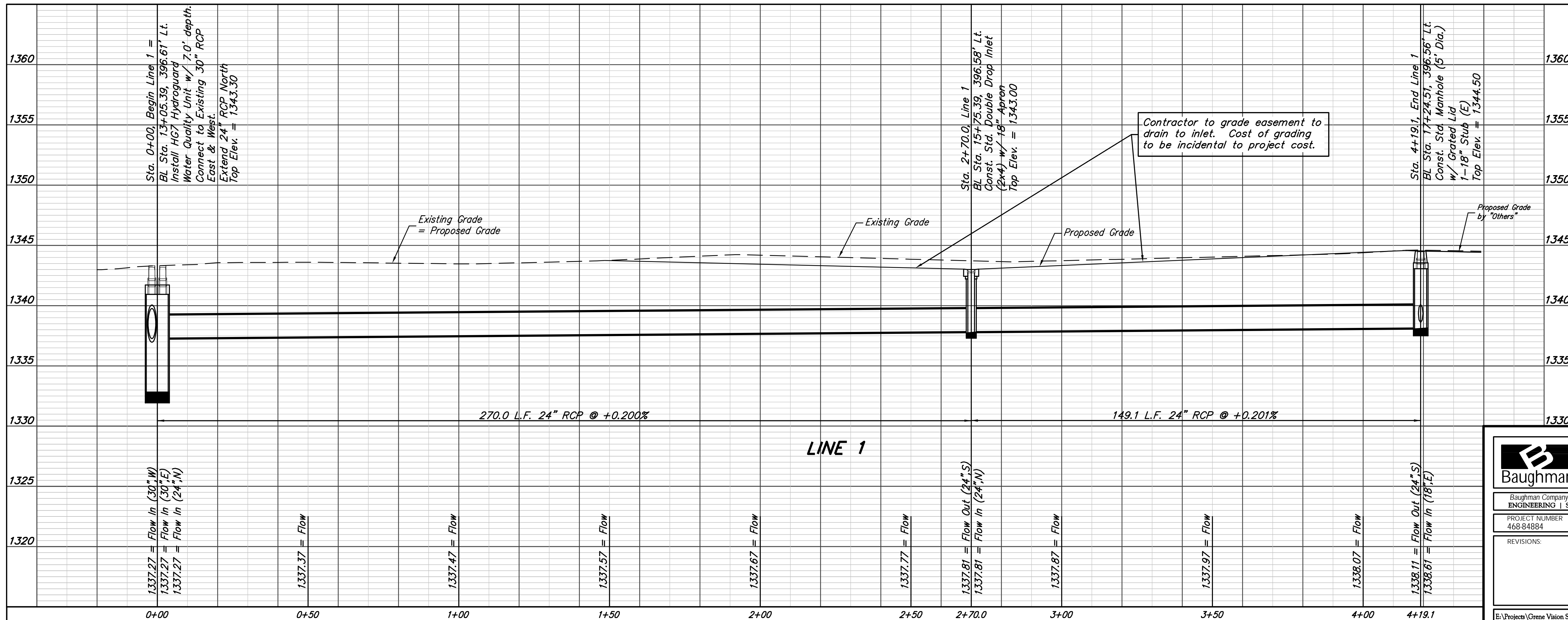
Sta. 2+70.0, Line 1
 BL Sta. 15+75.39, 396.58' Lt.
 Const. Std. Double Drop Inlet (2x4) w/ 18" Apron Top Elev. = 1343.00

Sta. 4+19.1, Line 1
 BL Sta. 17+24.51, 396.56' Lt.
 Const. Std. Manhole (5' Dia.) w/ Grated Lid 1-18" Stub (E) Top Elev. = 1344.50

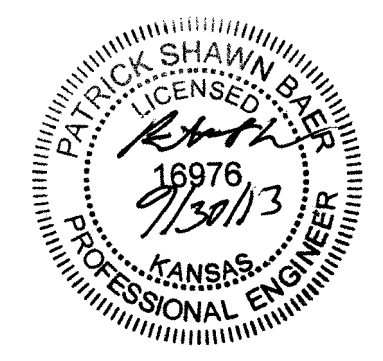
HUNTINGTON PARK ADDITION

2

Baseline = ϕ Maize Rd.



Contractor to grade easement to drain to inlet. Cost of grading to be incidental to project cost.



B Baughman		Huntington Park Addition	
PROJECT NUMBER 468-84884		LINE 1 Sanitary Sewer Improvements	
DESIGN PAT		DRAWN JAK	
APPROVED		DATE 7/15/13	
SCALE Noted		SHEET 2 OF 12	
E:\Projects\Greene Vision Site Plan (13-06-E914)\Engineering\Petition\SWS PLANS\SWS.dwg			