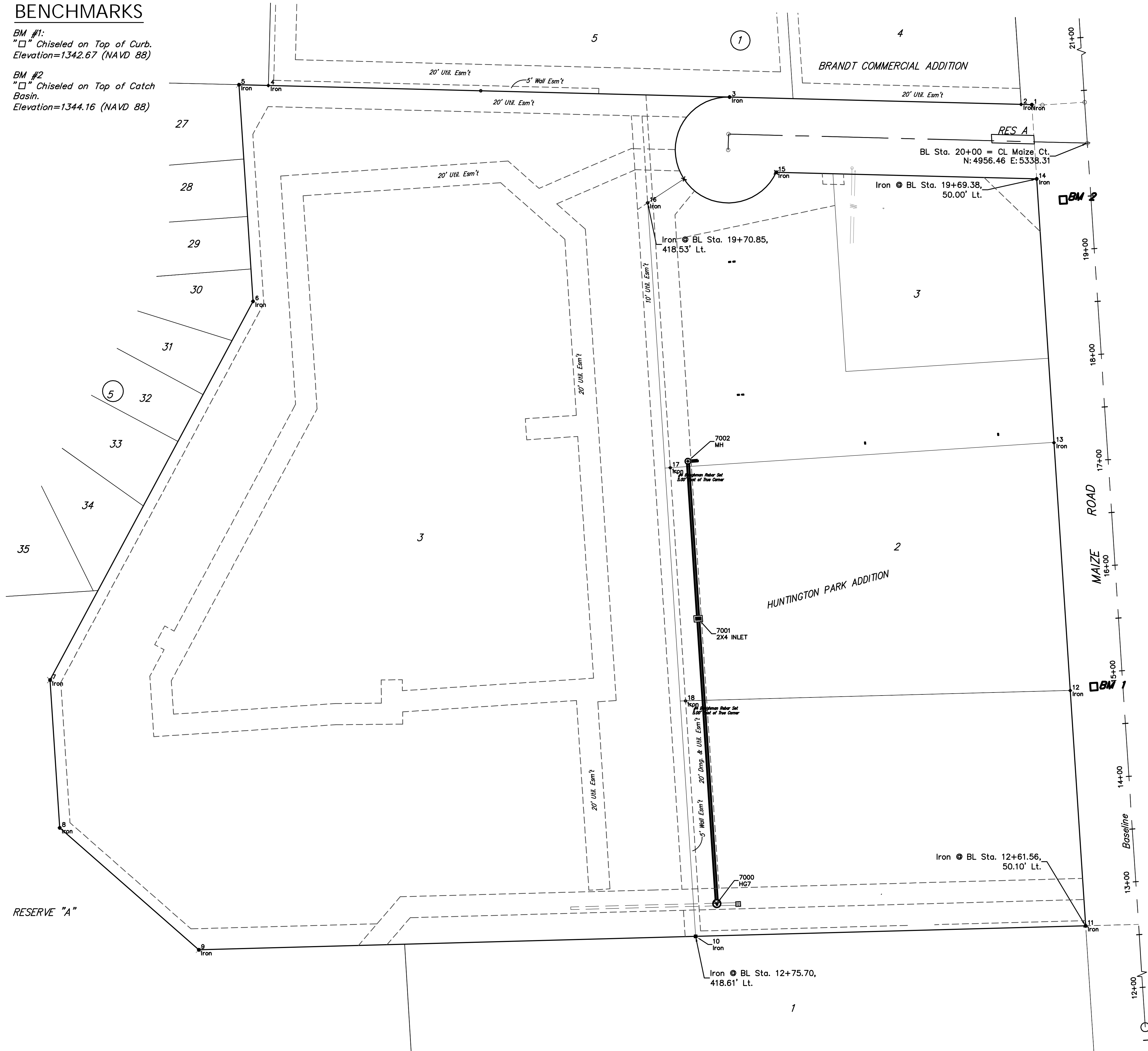


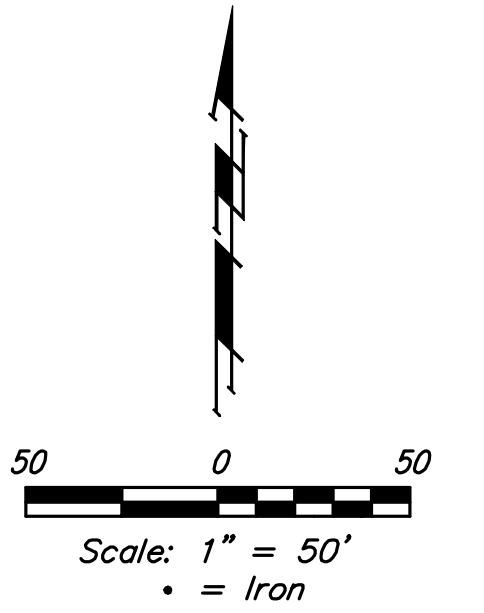
BENCHMARKS

BM #1:
 "□" Chiseled on Top of Curb.
 Elevation=1342.67 (NAVD 88)

BM #2:
 "□" Chiseled on Top of Catch
 Basin.
 Elevation=1344.16 (NAVD 88)



Point Table			
Point #	Northing	Easting	Description
1	4992.77	5285.82	Iron
2	4993.11	5275.68	Iron
3	5000.01	5000.03	Iron
4	5010.94	4563.91	Iron
5	5011.63	4536.04	Iron
6	4806.87	4549.34	Iron
7	4448.76	4357.44	Iron
8	4308.98	4366.56	Iron
9	4193.63	4498.11	Iron
10	4206.34	4967.95	Iron
11	4216.33	5336.59	Iron
12	4438.82	5322.12	Iron
13	4673.17	5306.76	Iron
14	4922.64	5290.42	Iron
15	4928.80	5044.09	Iron
16	4900.01	4922.59	Iron
17	4649.54	4943.98	Iron
18	4429.00	4958.40	Iron
7000	4237.41	4987.96	HG7
7001	4506.83	4970.34	2X4 INLET
7002	4655.63	4960.61	MH



	Huntington Park Addition	
	COORDINATES	
Stormwater Sewer Improvements		
<small>Baughman Company, P.A. 315 Ellis St. Wichita, KS 67211 P: 316.262.7271 F: 316.262.0149 ENGINEERING SURVEYING PLANNING LANDSCAPE ARCHITECTURE</small>		
PROJECT NUMBER 468-84884 OCA 751515	DESIGN PAT	DRAWN JAK
REVISIONS:	APPROVED	DATE 7/15/13
	SCALE Noted	SHEET
	11 OF 12	

