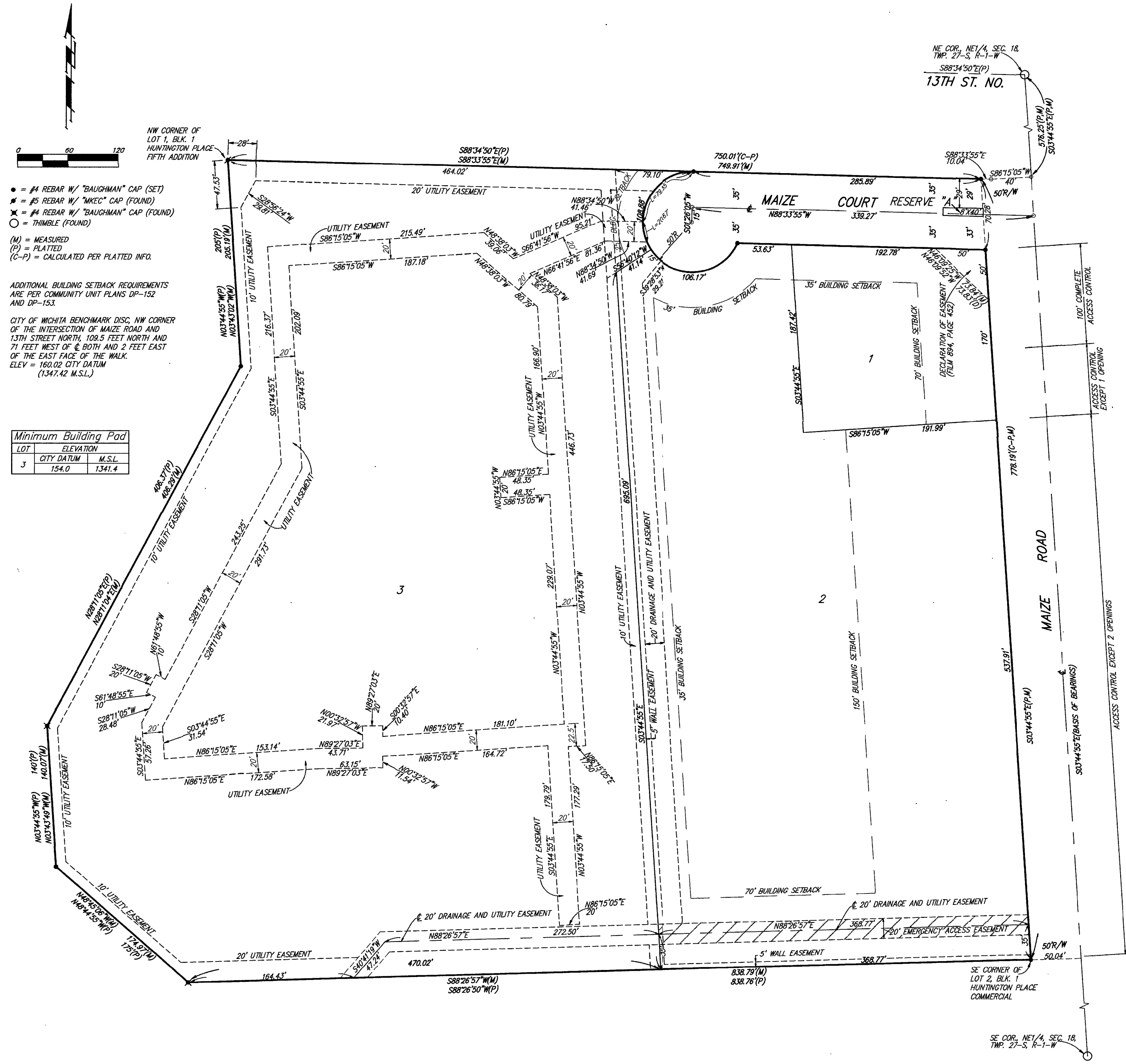


# HUNTINGTON PARK ADDITION

## WICHITA, SEDGWICK COUNTY, KANSAS



- = #4 REBAR W/ "BAUGHMAN" CAP (SET)
- = #5 REBAR W/ "MACE" CAP (FOUND)
- ✕ = #4 REBAR W/ "BAUGHMAN" CAP (FOUND)
- = THIMBLE (FOUND)
- (M) = MEASURED
- (P) = PLATTED
- (C-P) = CALCULATED PER PLATTED INFO.

ADDITIONAL BUILDING SETBACK REQUIREMENTS ARE PER COMMUNITY UNIT PLANS DP-152 AND DP-153.

CITY OF WICHITA BENCHMARK DISC, NW CORNER OF THE INTERSECTION OF MAIZE ROAD AND 13TH STREET NORTH, 100.5 FEET NORTH AND 71 FEET WEST OF 6 BOTH AND 2 FEET EAST OF THE EAST FACE OF THE WALK. ELEV = 160.02 CITY DATUM (1347.42 M.S.L.)

| LOT | ELEVATION                         |
|-----|-----------------------------------|
| 3   | CITY DATUM M.S.L.<br>154.0 1341.4 |

State of Kansas) SS We, Baughman Company P.A., Surveyors in Sedgwick County and State do hereby certify that we have surveyed and platted "HUNTINGTON PARK ADDITION", Wichita, Sedgwick County, Kansas, and that the accompanying plat is a true and correct exhibit of the property surveyed, described as follows: A replat of Lots 1 and 2, Block 1, Huntington Place Commercial, an Addition to Wichita, Sedgwick County, Kansas, together with Lot 1, Block 1, Huntington Place 5th Addition, an Addition to Wichita, Sedgwick County, Kansas.

All being situated in the NE 1/4 of Sec. 18, Twp. 27-S, R-1-W of the 6th P.M., Sedgwick County, Kansas.

Existing public easements and dedications being vacated by virtue of K.S.A. 12-512(b).

Baughman Co., P.A.

Michael G. Conrey  
Michael G. Conrey  
REGISTERED SURVEYOR  
KANSAS  
LAND SURVEYOR  
No. 218-871(0) 2897

This plat of "HUNTINGTON PARK ADDITION", Wichita, Sedgwick County, Kansas has been submitted to and approved by the Wichita, Sedgwick County Metropolitan Area Planning Commission, Wichita, Kansas.

Dated this 21<sup>st</sup> day of November, 1996.

Wichita-Sedgwick County Metropolitan Area Planning Commission

John C. Frye  
John C. Frye  
Chairman

Marvin S. Krout  
Marvin S. Krout  
Secretary

This plat approved and all dedications shown hereon accepted by the City Council of the City of Wichita, Kansas, this 9<sup>th</sup> day of December, 1997.

Bob Knight  
Bob Knight  
Mayor

Pat Burnett  
Pat Burnett  
City Clerk

Entered on transfer record this 13<sup>th</sup> day of January, 1998.

James Alfano  
James Alfano  
County Clerk

State of Kansas) SS This is to certify that this plat has been filed for record in the office of the Register of Deeds, this 13<sup>th</sup> day of January, 1998, at 1:00 o'clock P.M., and is duly recorded.

Larry Gonsler  
Larry Gonsler  
Register of Deeds

Michael D. Hurtt  
Michael D. Hurtt  
Deputy

#1659461

Huntington Park Apartments, L.L.C.  
Michael G. Loveland, Member

Maize Road Partnership  
Michael G. Loveland, Partner

Mark B. Hutton, Partner

Andrew W. Hutton, Partner

We the undersigned, holders of a mortgage on the above described property, do hereby consent to this plat of "HUNTINGTON PARK ADDITION", Wichita, Sedgwick County, Kansas.

Intrust Bank, N.A.

State of Kansas) SS The foregoing instrument acknowledged before me, this 31<sup>st</sup> day of October, 1997, by DRUCE A. LONG, VICE PRESIDENT of the Intrust Bank, N.A., on behalf of the bank.

Druce A. Long, VICE-PRES.  
Druce A. Long

MARY McDANIEL  
Notary Public - State of Kansas  
My Appl. Expires 06/25/2000

Mary McDaniel  
Mary McDaniel  
Notary Public

State of Kansas) SS The foregoing instrument acknowledged before me, this 31<sup>st</sup> day of October, 1997, by Michael G. Loveland, Member of Huntington Park Apartments, L.L.C., on behalf of the company.

Nancy R. Weber  
Nancy R. Weber  
Notary Public

My App'l. Exp. 6-9-99

State of Kansas) SS The foregoing instrument acknowledged before me, this 31<sup>st</sup> day of October, 1997, by Michael G. Loveland, Partner in Maize Road Partnership, on behalf of the partnership.

Nancy R. Weber  
Nancy R. Weber  
Notary Public

My App'l. Exp. 6-9-99

We the undersigned, holders of a mortgage on the above described property, do hereby consent to this plat of "HUNTINGTON PARK ADDITION", Wichita, Sedgwick County, Kansas.

Central National Bank

Kevin Klum  
Kevin Klum  
President - Vice President

State of Kansas) SS The foregoing instrument acknowledged before me, this 31<sup>st</sup> day of October, 1997, by Kevin Klum, President - Vice President of the Central National Bank, on behalf of the bank.

Shelby Minnis  
Shelby Minnis  
Notary Public

State of Kansas) SS The foregoing instrument acknowledged before me, this 31<sup>st</sup> day of October, 1997, by Mark B. Hutton, Partner in Maize Road Partnership, on behalf of the partnership.

Nancy R. Weber  
Nancy R. Weber  
Notary Public

My App'l. Exp. 6-9-99

State of Kansas) SS The foregoing instrument acknowledged before me, this 31<sup>st</sup> day of October, 1997, by Andrew W. Hutton, Partner in Maize Road Partnership, on behalf of the partnership.

Nancy R. Weber  
Nancy R. Weber  
Notary Public

My App'l. Exp. 6-9-99

We the undersigned, holders of a mortgage on the above described property, do hereby consent to this plat of "HUNTINGTON PARK ADDITION", Wichita, Sedgwick County, Kansas.

NotationsBank, N.A.

D. W. Harris  
D. W. Harris  
V.P.

State of Kansas) SS The foregoing instrument acknowledged before me, this 31<sup>st</sup> day of October, 1997, by D. W. Harris, V.P. of the NotationsBank, N.A., on behalf of the bank.

Kimberly J. Bengtson  
Kimberly J. Bengtson  
Notary Public

My App'l. Exp. 9-9-2001

State of Kansas) SS The foregoing instrument acknowledged before me, this 31<sup>st</sup> day of October, 1997, by Andrew W. Hutton, Partner in Maize Road Partnership, on behalf of the partnership.

Nancy R. Weber  
Nancy R. Weber  
Notary Public

My App'l. Exp. 6-9-99

KIMBERLY J. BENGTSON  
Notary Public  
STATE OF KANSAS  
My Appl. Exp. 9-9-2001

BAUGHMAN COMPANY P.A.  
ENGINEERING, SURVEYING, & PLANNING  
316-262-7271 • 316-ELLIS • WICHITA, KANSAS 67211  
P:\PLAT\WIP\067.DWG-062