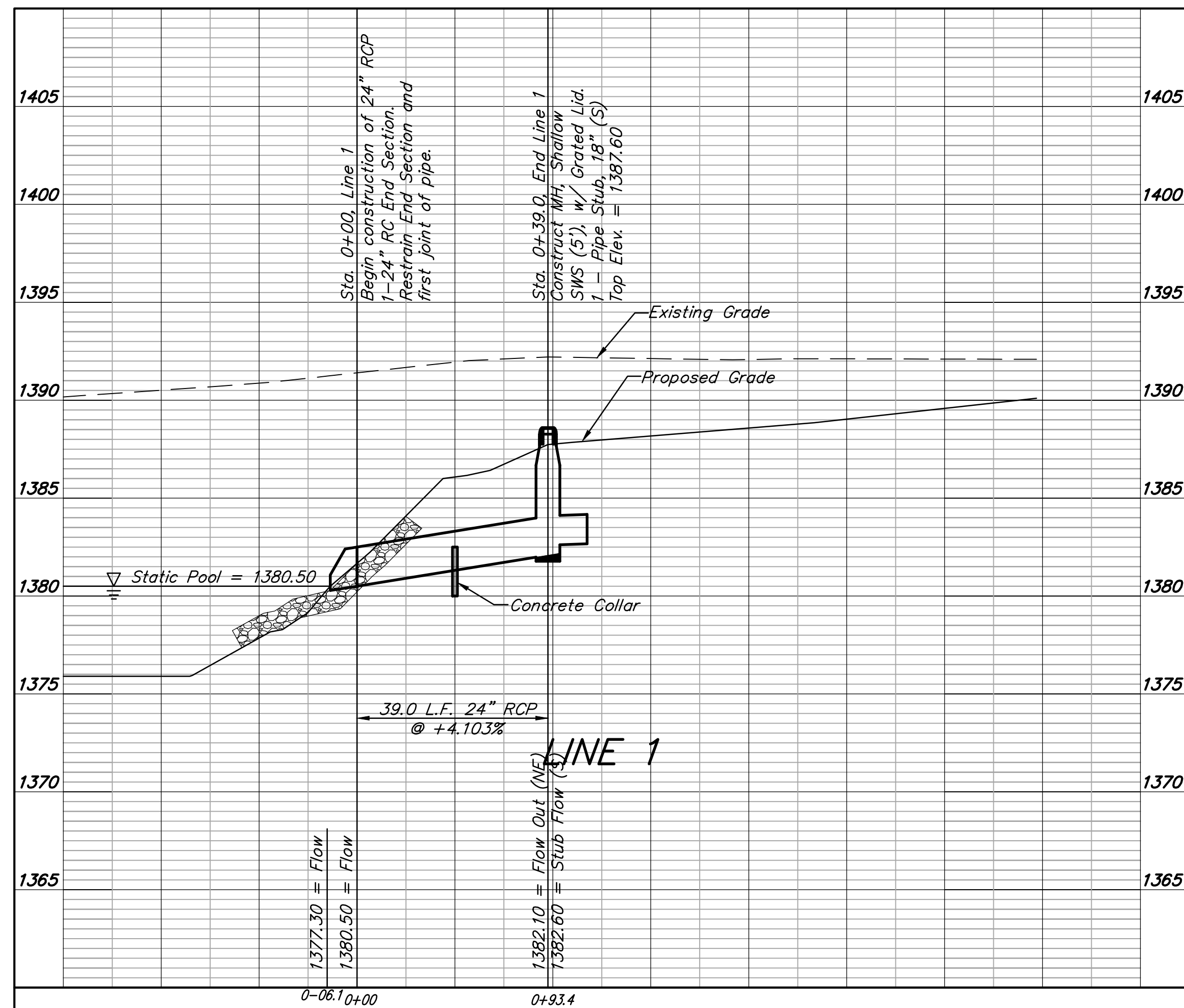
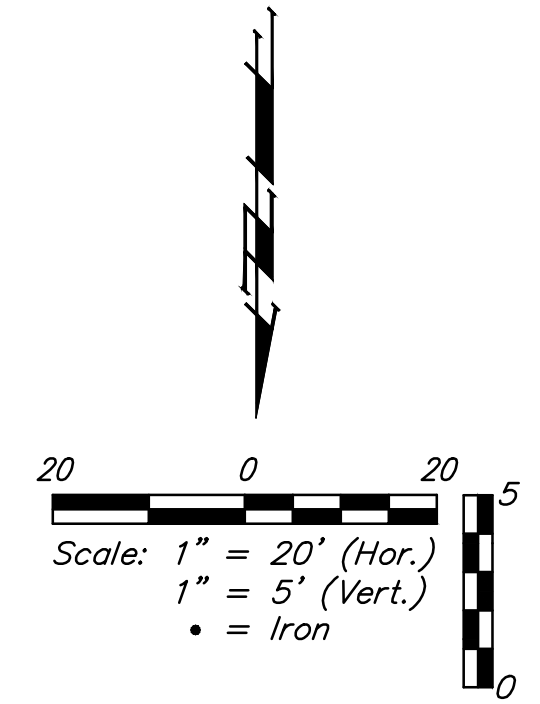
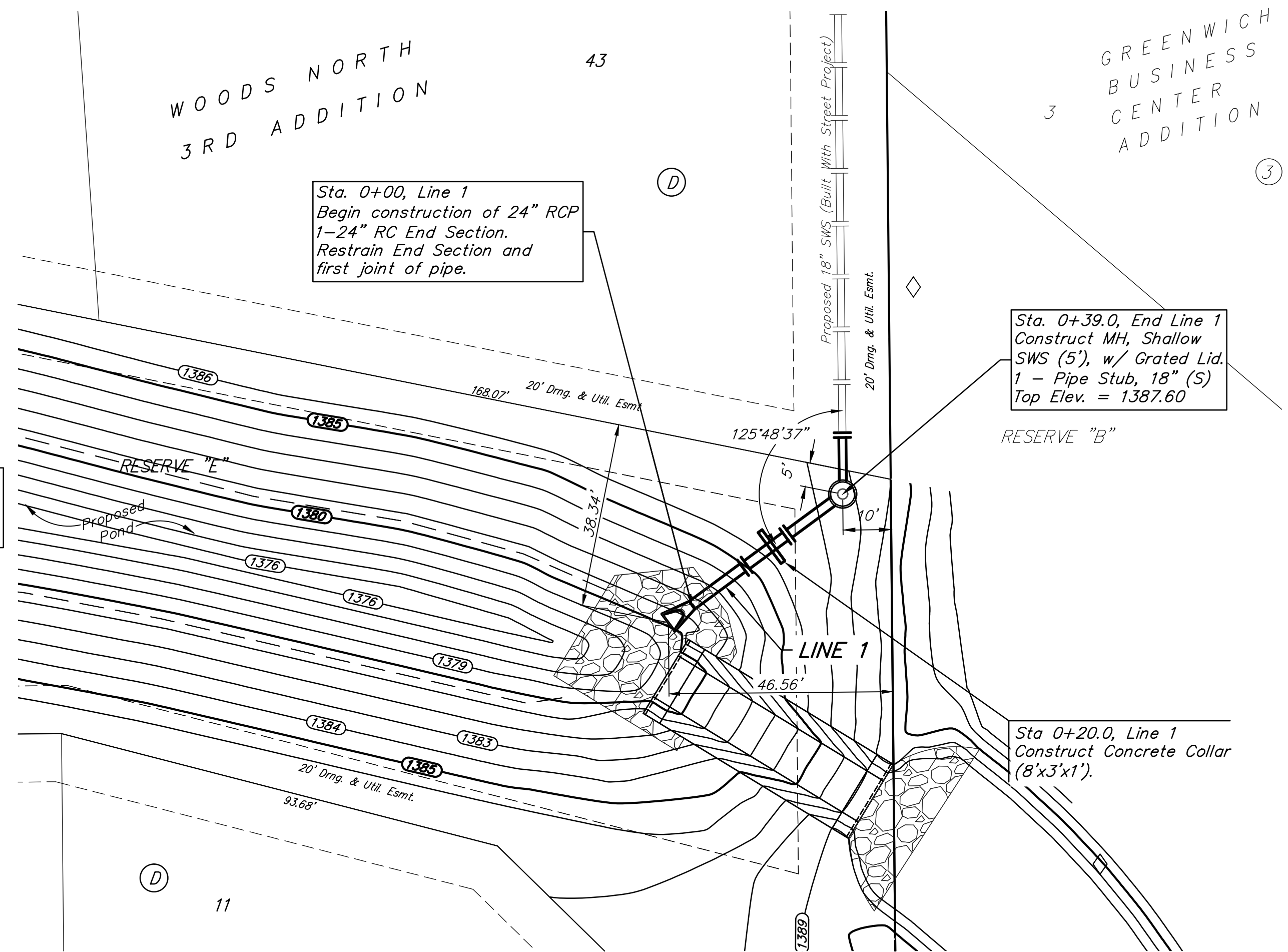


BENCHMARKS:

BM #1: "□" cut in top of curb near intersection of 27th Street North & Woodridge, south of SE corner of Lot 24, Block C, Woods North 3rd Addition.
Elev. = 1392.97 NGVD29

BM #2: "□" cut in top of curb near intersection of Woodridge Court & Woodridge, south of SE corner of Lot 6, Block A, Woods North 3rd Addition.
Elev. = 1390.10 NGVD29

POND DATA:
Static Pool Elev = 1380.50 NGVD 29
Bottom Elevation = 1372.50 NGVD 29
100 Year DWS = 1385.70 NGVD 29



B Baughman	Woods North 3rd Addition - Phase II	
	LINE 1 STORM WATER DRAIN #347	
<small>Baughman Company, P.A. 315 Ellis St., Wichita, KS 67211 P 316-262-7271 F 316-262-0149 ENGINEERING SURVEYING PLANNING LANDSCAPE ARCHITECTURE</small>		
PROJECT NUMBER 468-84488	DESIGN AEG	DRAWN TMS
REVISIONS:	APPROVED	DATE 9/12/13
	SCALE Noted	SHEET
2 OF 24		