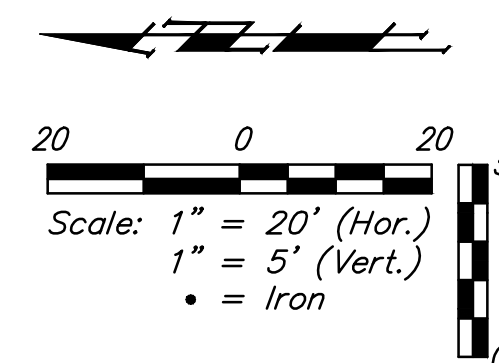


BENCHMARKS:

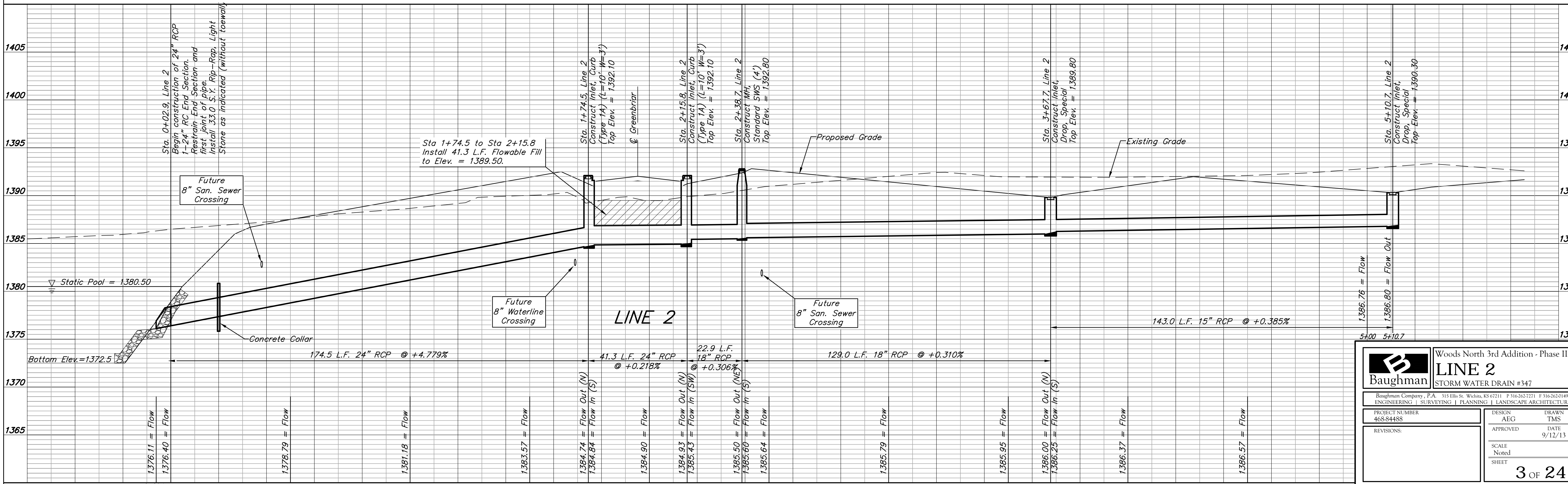
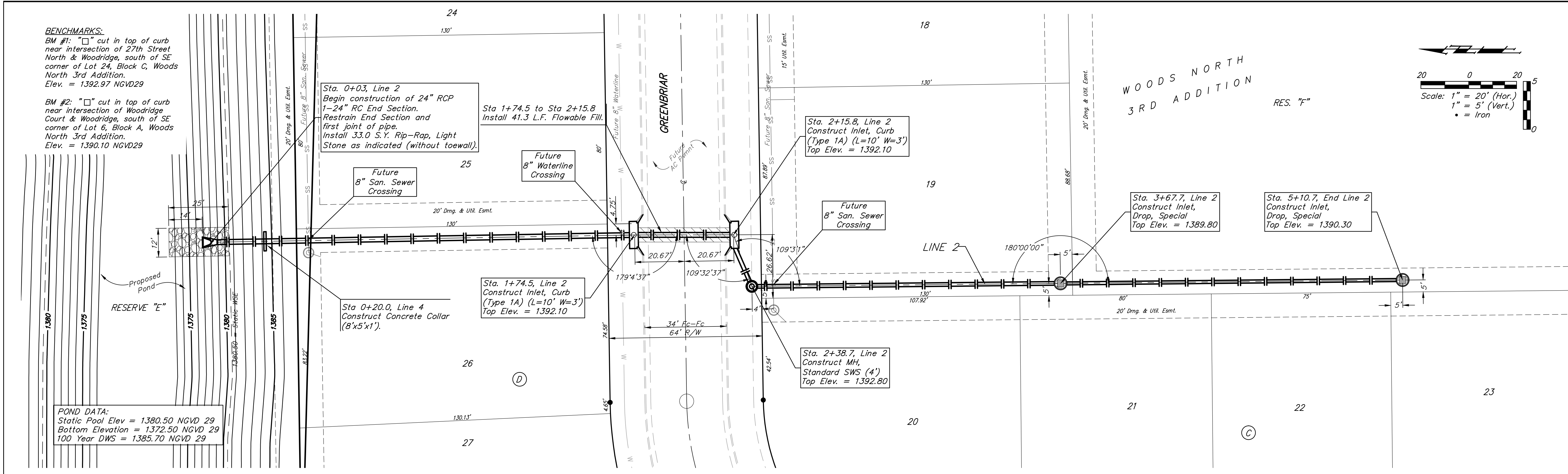
BM #1: "□" cut in top of curb near intersection of 27th Street North & Woodridge, south of SE corner of Lot 24, Block C, Woods North 3rd Addition.
Elev. = 1392.97 NGVD29

BM #2: "□" cut in top of curb near intersection of Woodridge Court & Woodridge, south of SE corner of Lot 6, Block A, Woods North 3rd Addition.
Elev. = 1390.10 NGVD29

POND DATA:
Static Pool Elev = 1380.50 NGVD 29
Bottom Elevation = 1372.50 NGVD 29
100 Year DWS = 1385.70 NGVD 29



WOODS NORTH
3RD ADDITION
RES. "F"



		Woods North 3rd Addition - Phase II LINE 2 STORM WATER DRAIN #347	
		Baughman Company, P.A. 315 Ellis St., Wichita, KS 67211 P 316-262-2771 F 316-262-0149 ENGINEERING SURVEYING PLANNING LANDSCAPE ARCHITECTURE	
PROJECT NUMBER 468-84488		DESIGN AEG TMS	
REVISIONS:		APPROVED DATE 9/12/13	
SCALE Noted		SHEET 3 OF 24	