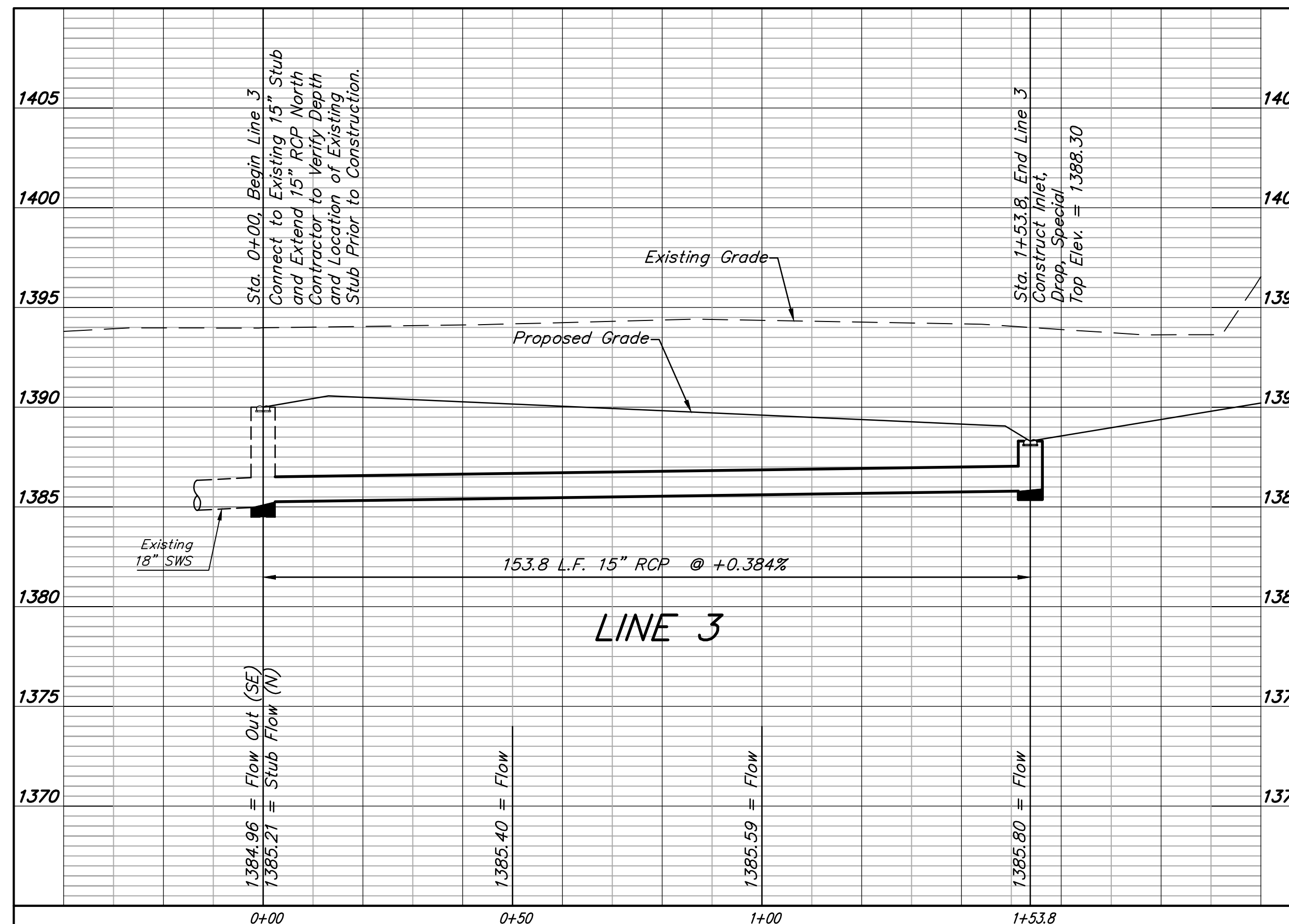
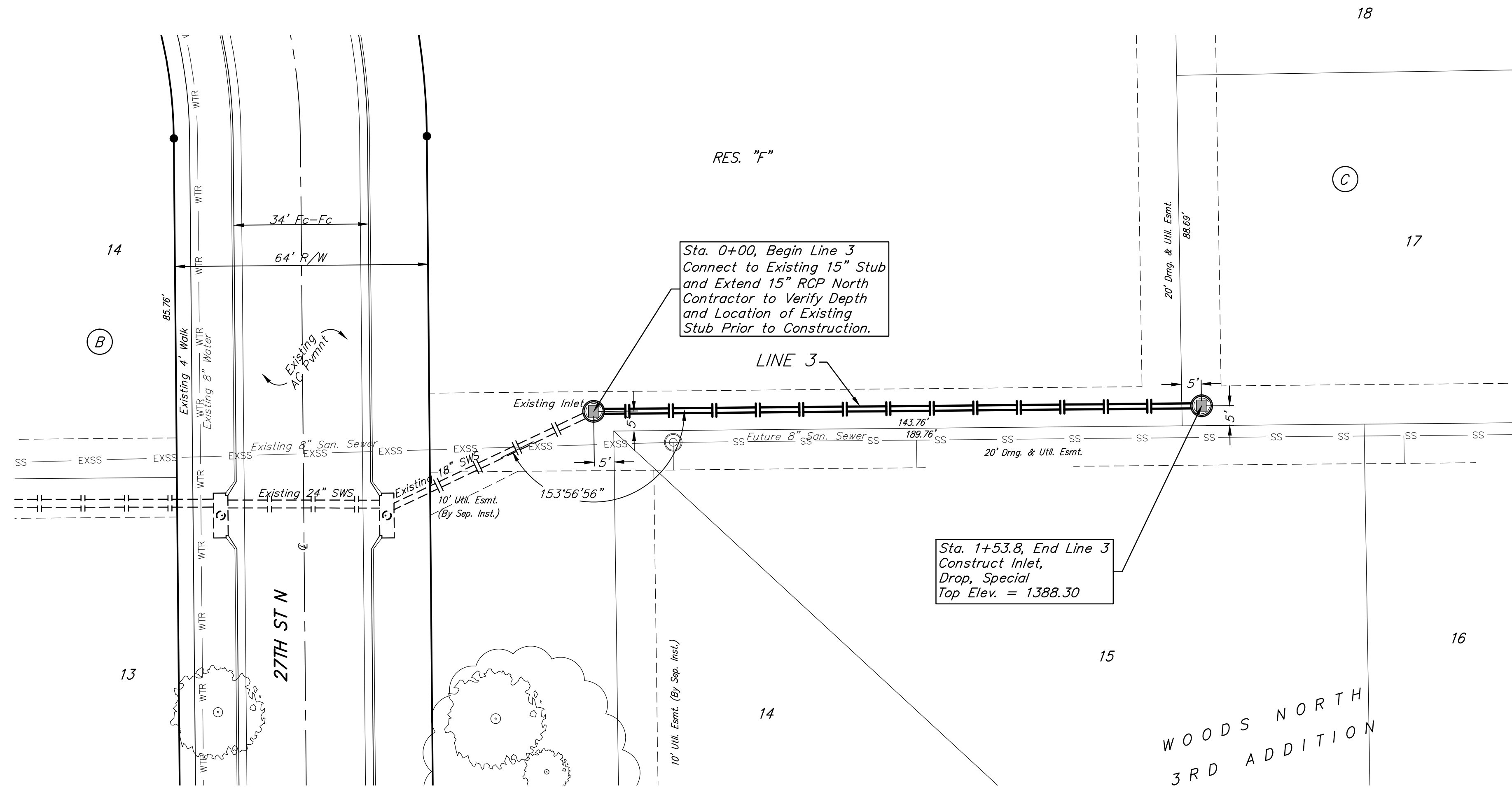


**BENCHMARKS:**

BM #1: "□" cut in top of curb near intersection of 27th Street North & Woodridge, south of SE corner of Lot 24, Block C, Woods North 3rd Addition.  
Elev. = 1392.97 NGVD29

BM #2: "□" cut in top of curb near intersection of Woodridge Court & Woodridge, south of SE corner of Lot 6, Block A, Woods North 3rd Addition.  
Elev. = 1390.10 NGVD29



		Woods North 3rd Addition - Phase II	
		<b>LINE 3</b> STORM WATER DRAIN #347	
Baughman Company, P.A. 315 Ellis St., Wichita, KS 67211 P 316-262-7271 F 316-262-0149 ENGINEERING   SURVEYING   PLANNING   LANDSCAPE ARCHITECTURE			
PROJECT NUMBER 468-84488	DESIGN AEG	DRAWN TMS	DATE 9/12/13
REVISIONS:	APPROVED	SCALE Noted	SHEET <b>4 OF 24</b>