

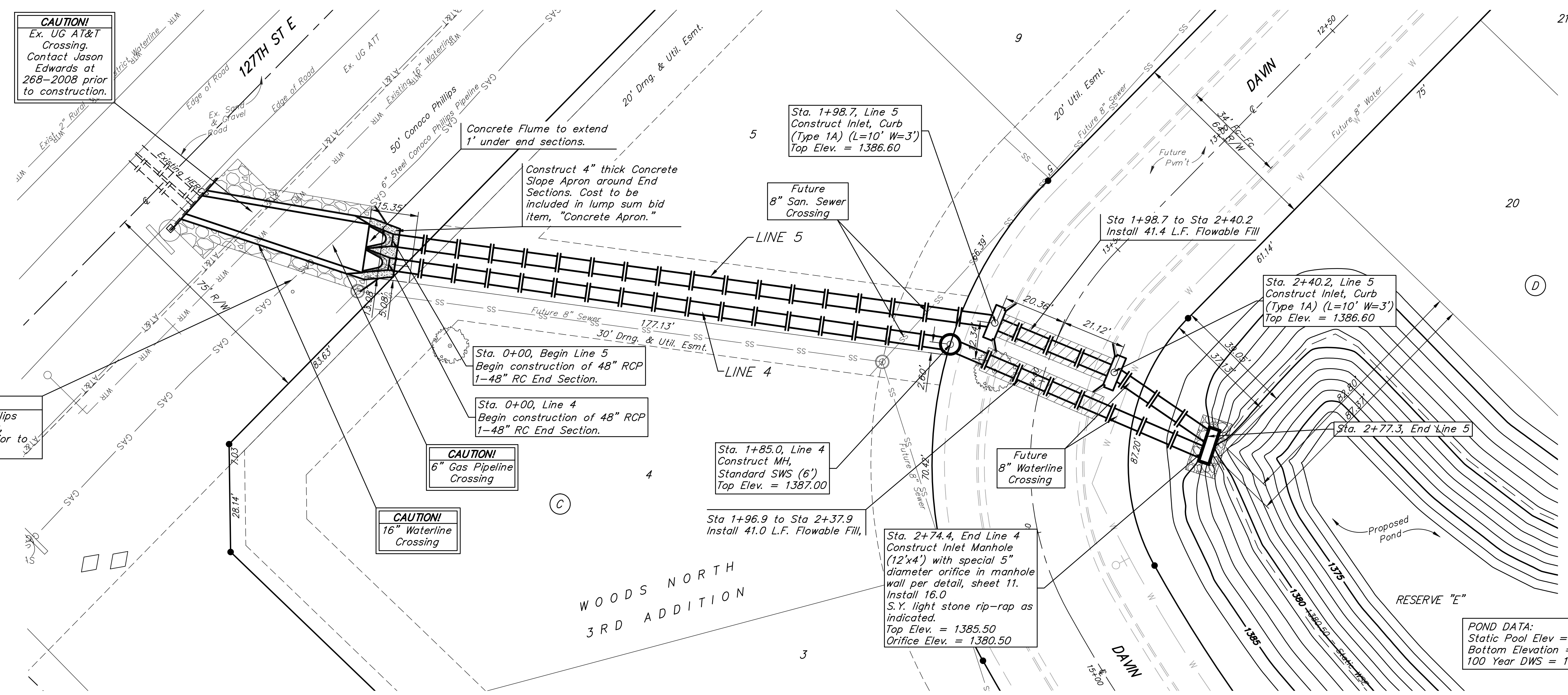
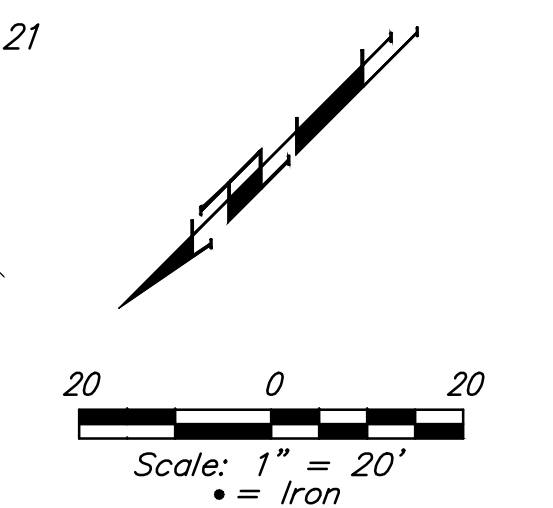
BENCHMARKS:
 BM #1: "□" cut in top of curb near intersection of 27th Street North & Woodridge, south of SE corner of Lot 24, Block C, Woods North 3rd Addition. Elev. = 1392.97 NGVD29
 BM #2: "□" cut in top of curb near intersection of Woodridge Court & Woodridge, south of SE corner of Lot 6, Block A, Woods North 3rd Addition. Elev. = 1390.10 NGVD29

CAUTION!
 Ex. UG AT&T Crossing. Contact Jason Edwards at 268-2008 prior to construction.

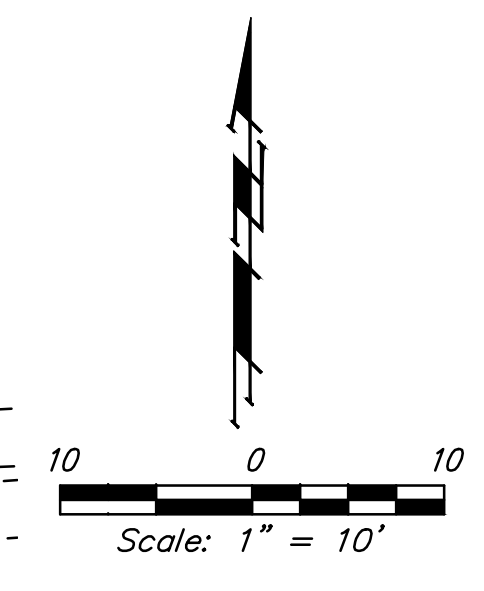
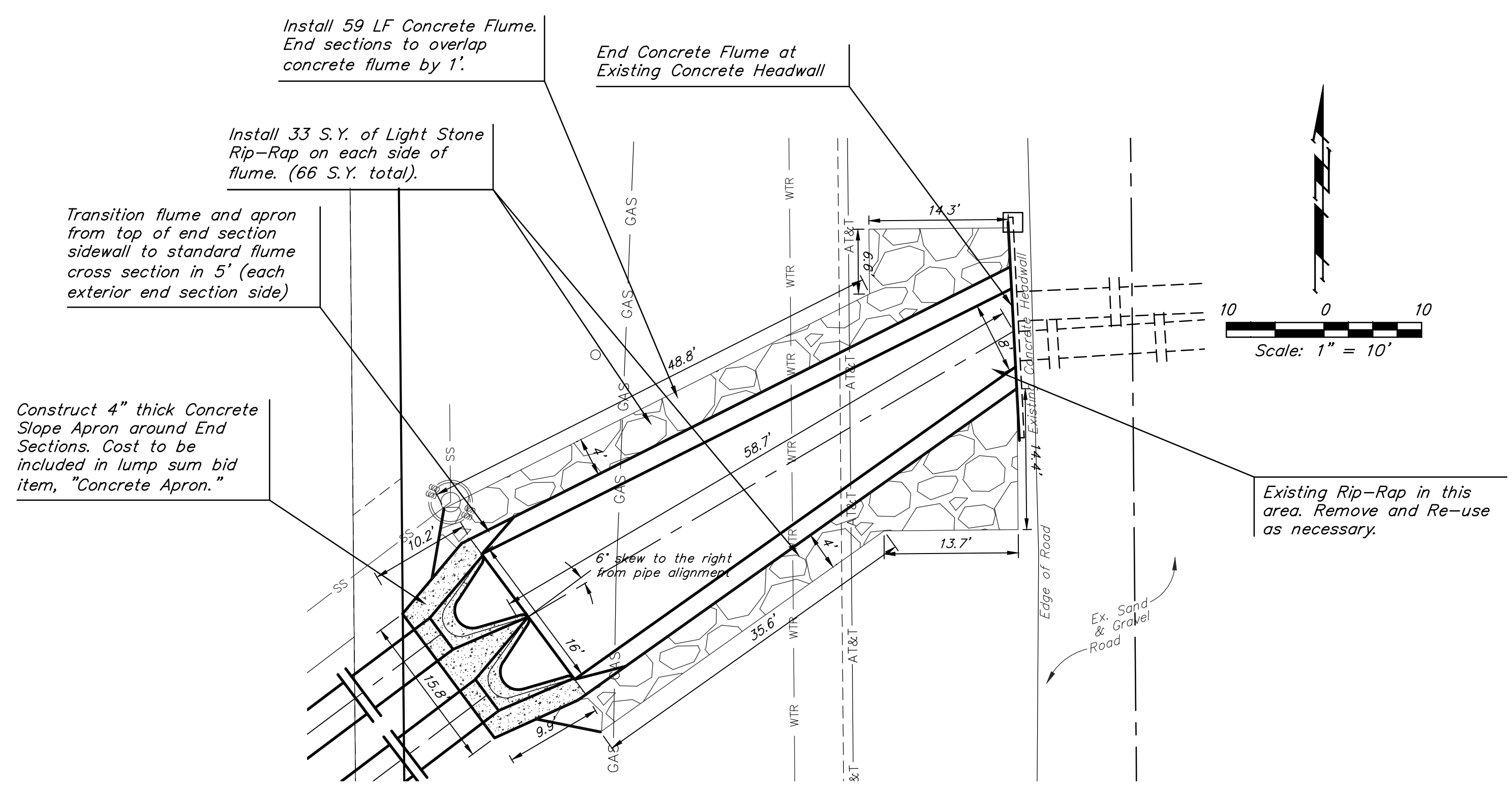
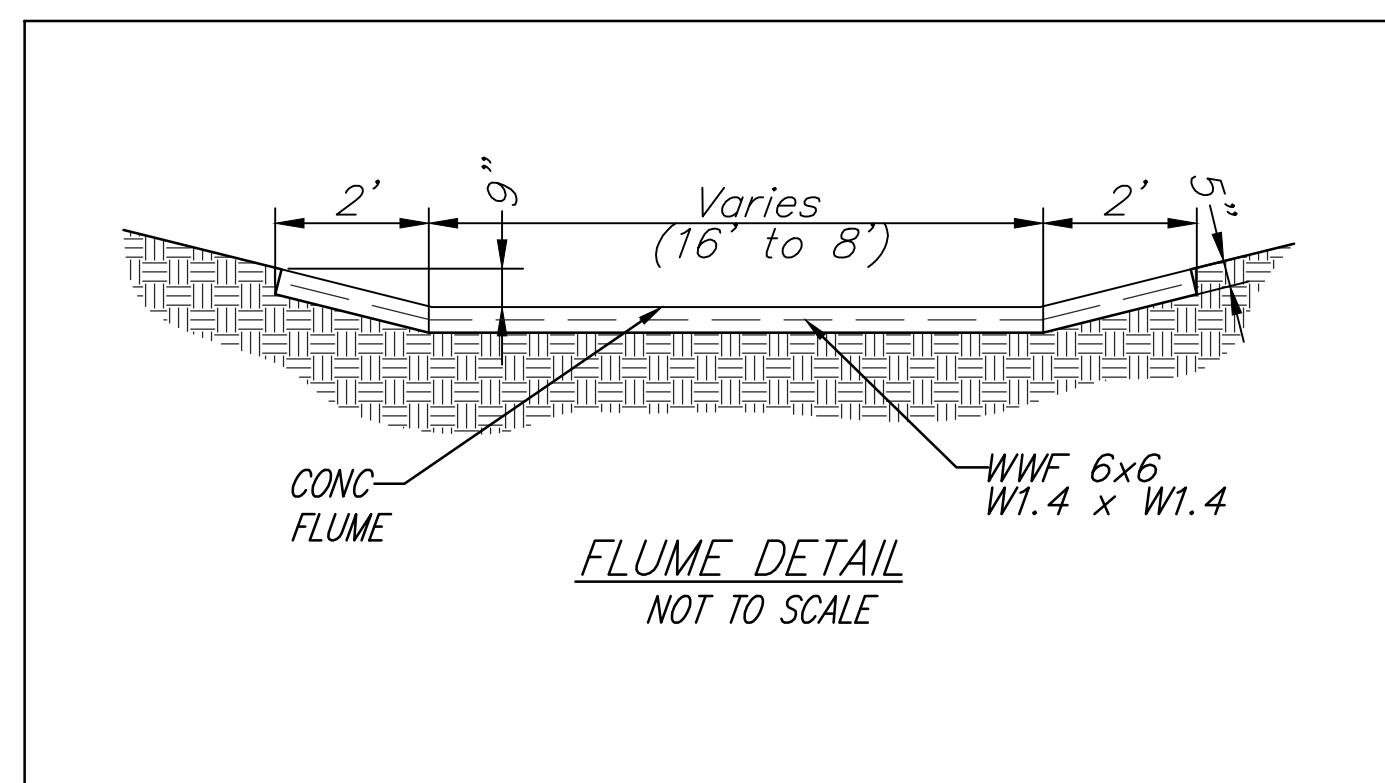
CAUTION!
 Existing 6" Steel ConocoPhillips Pipeline. Contact Kevin Kent, 316-761-1621 one week prior to construction.

CAUTION!
 6" Gas Pipeline Crossing

CAUTION!
 16" Waterline Crossing



POND DATA:
 Static Pool Elev = 1380.50 NGVD 29
 Bottom Elevation = 1372.50 NGVD 29
 100 Year DWS = 1385.70 NGVD 29



	Woods North 3rd Addition - Phase II	
	LINES 4 & 5 STORM WATER DRAIN #347	
<small>Baughman Company, P.A. 315 Ellis St., Wichita, KS 67211 P 316-262-7271 F 316-262-0149 ENGINEERING SURVEYING PLANNING LANDSCAPE ARCHITECTURE</small>		
PROJECT NUMBER 468-84488	DESIGN AEG	DRAWN TMS
REVISIONS:	APPROVED DATE 9/12/13	SCALE Noted SHEET
		5 OF 24