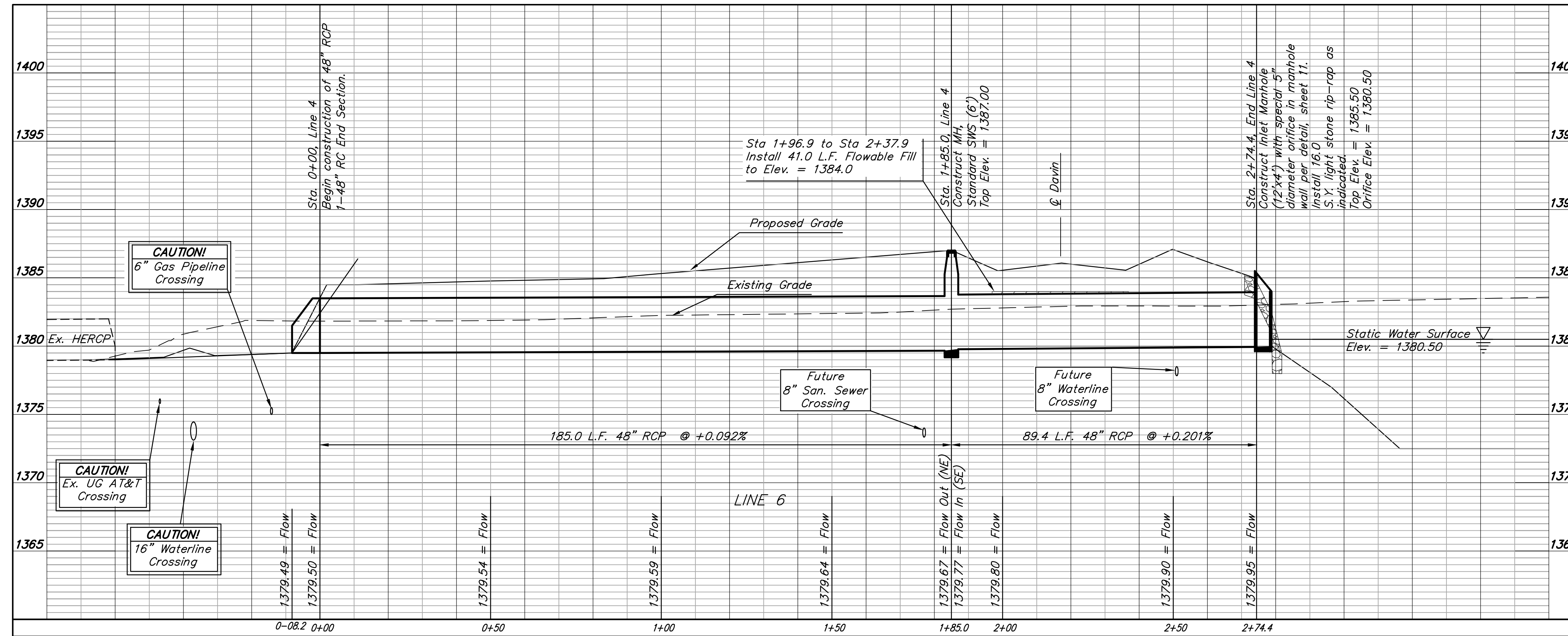
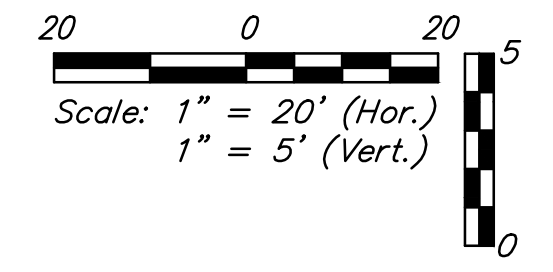
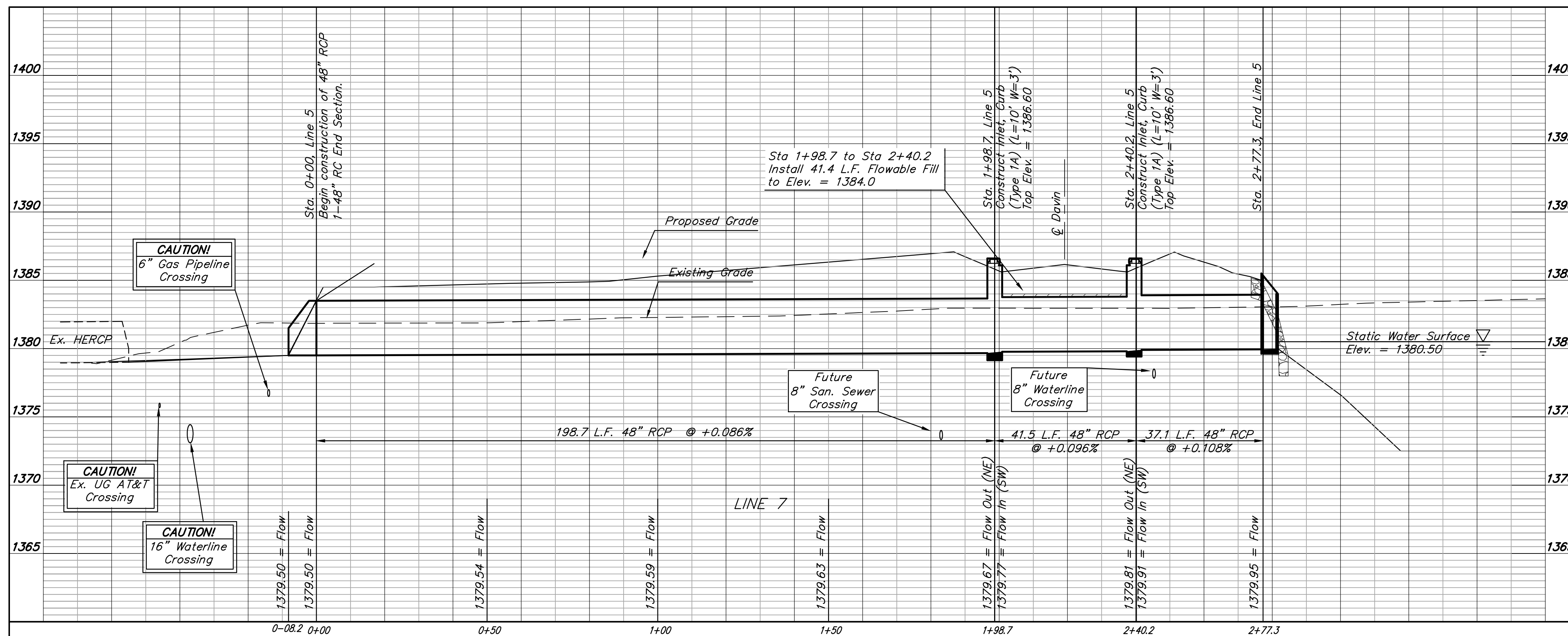


BENCHMARKS:
 BM #1: "□" cut in top of curb near intersection of 27th Street North & Woodridge, south of SE corner of Lot 24, Block C, Woods North 3rd Addition.
 Elev. = 1392.97 NGVD29

BM #2: "□" cut in top of curb near intersection of Woodridge Court & Woodridge, south of SE corner of Lot 6, Block A, Woods North 3rd Addition.
 Elev. = 1390.10 NGVD29



DEPTH UNKNOWN
 6" Gas, 16" Water,
 & UG AT&T



	Woods North 3rd Addition - Phase II	
	LINES 4 & 5 STORM WATER DRAIN #347	
<small>Baughman Company, P.A. 315 Ellis St., Wichita, KS 67211 P 316-262-7271 F 316-262-0149 ENGINEERING SURVEYING PLANNING LANDSCAPE ARCHITECTURE</small>		
PROJECT NUMBER 468-84488	DESIGN AEG	DRAWN TMS
REVISIONS:	APPROVED DATE 9/12/13	SCALE Noted SHEET
		6 OF 24