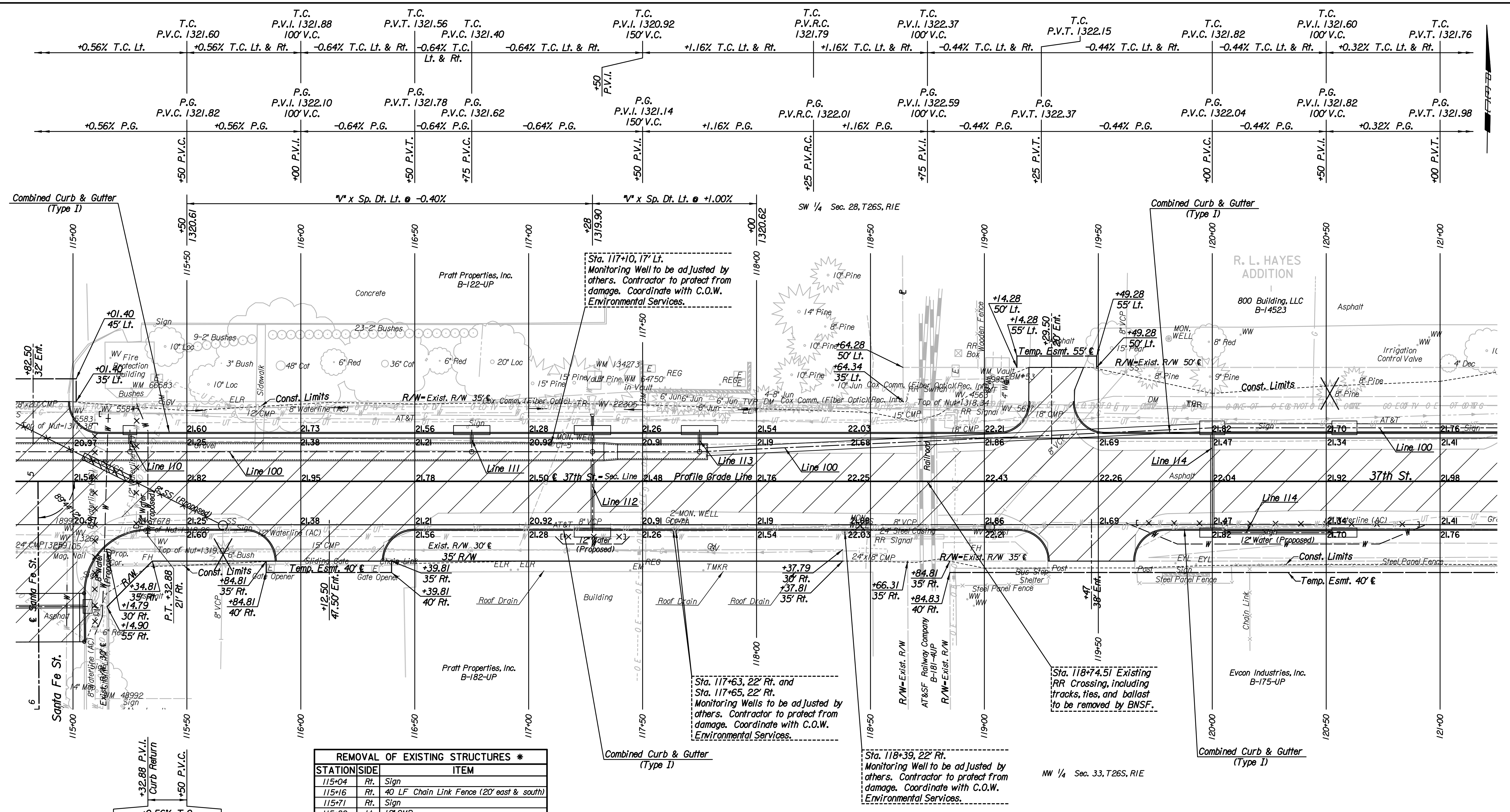


Plotted By: svb Date: 8/19/2013 4:38:15 PM  
 FILE: I:\2008\0820\Plan\08207-PL115.dgn



REMOVAL OF EXISTING STRUCTURES *		
STATION	SIDE	ITEM
115+04	Rt.	Sign
115+16	Rt.	40 LF Chain Link Fence (20' east & south)
115+71	Rt.	Sign
115+82	Lt.	12" CMP
116+11	Rt.	15" CMP
116+73	Lt.	Sign
118+51	Rt.	24" x 18" CMP
118+66	Lt.	15" CMP
118+87	Lt.	Headwall
118+91	Lt.	18" CMP
119+27	Lt.	18" CMP
120+20	Lt.	Sign
120+21	Rt.	Sign

\* For Information Only

**LEGEND**

Pavement Removal

- Denotes Trees to be Removed

BM\*53 Chiseled "D" near SE corner of Water Valve Vault on N side 37th St. N., on E side of RR spur at 800 E 37th St. N., 44' Lt. & Sta. 119+10 Elev. = 1322.36

No.	Revision	By	Date
37TH STREET NORTH			
<b>PLAN</b>			
<b>STA. 115+00 TO STA. 121+00</b>			
GARY JANZEN, P.E.-CITY ENGINEER CITY OF WICHITA PROJECT NO. 472-84692			
<b>PEC</b> PROFESSIONAL ENGINEERING CONSULTANTS, P.A. 303 SOUTH TOPEKA WICHITA, KS 67202 316-262-2691 www.pec1.com			
Designed by	JPS	Job No.	08207
Drawn by	SVB	Date	August, 2013
			Sh. 8 of 193