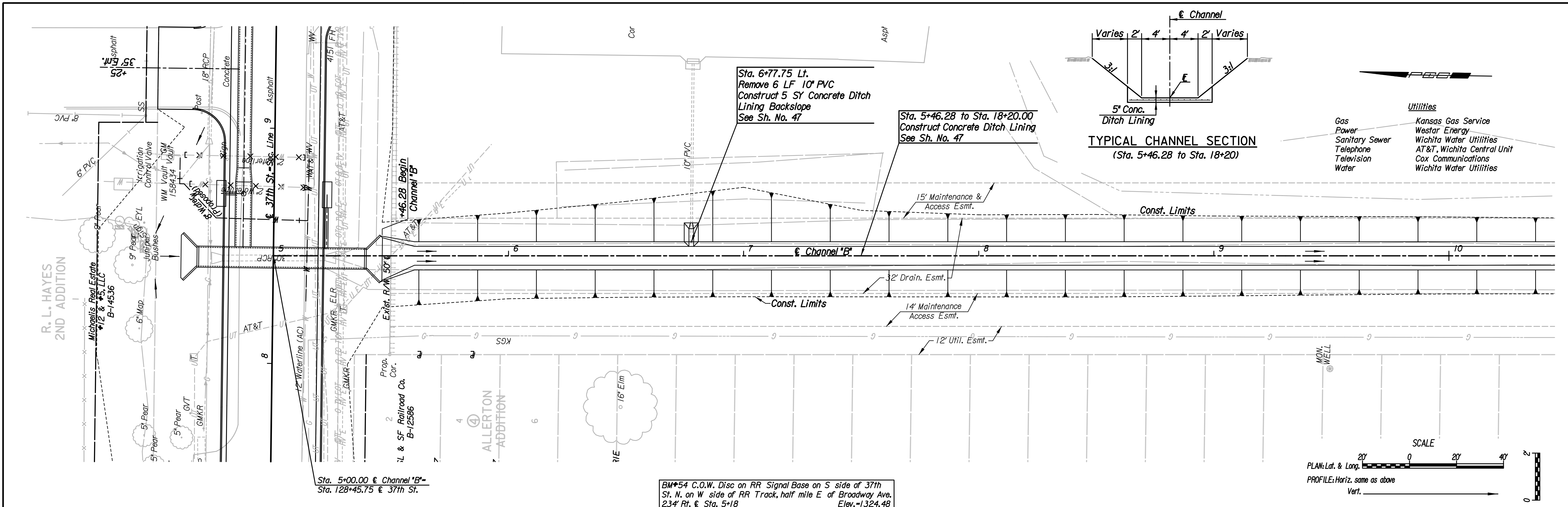
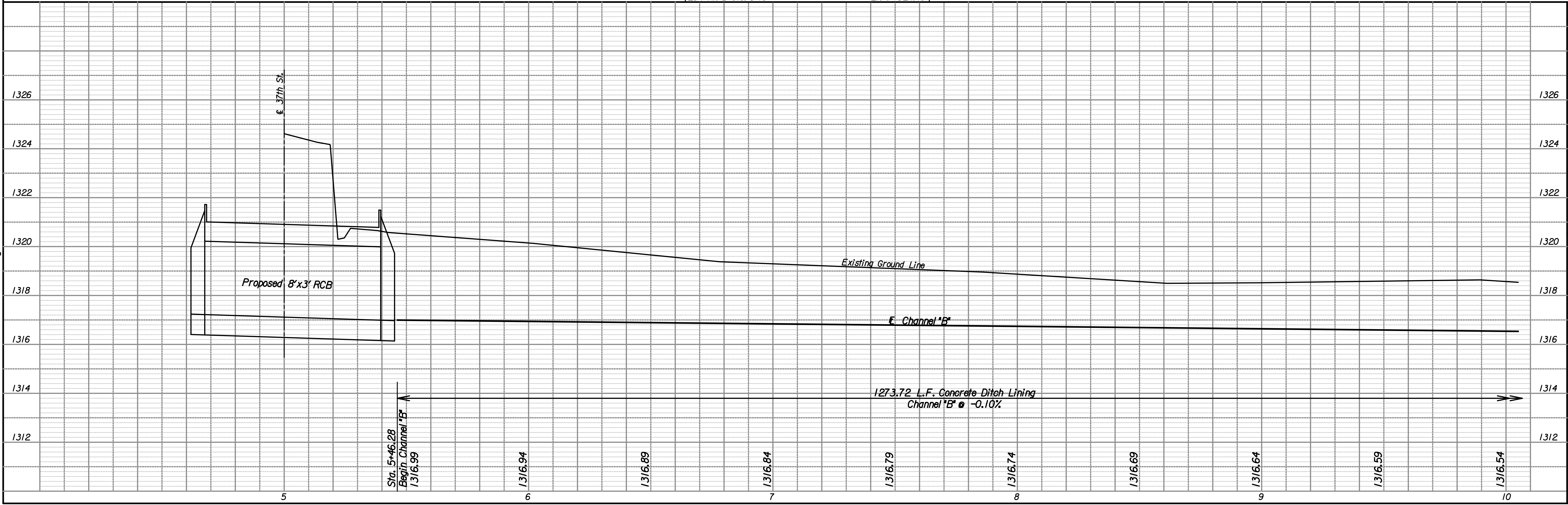


Plotted By: svb Date: 8/16/2013 6:03:01 PM
 FILE: I:\2008\08207\Plan\08207-PL PR ChannelB 1.dgn



BM*54 C.O.W. Disc on RR Signal Base on S side of 37th St. N. on W side of RR Track, half mile E of Broadway Ave. 234' Rt. & Sta. 5+18 Elev. = 1324.48



37TH STREET NORTH
CHANNEL "B" PLAN
 STA. 5+00 TO STA. 10+00
 C.O.W. PROJ. NO. 472-84682

PROFESSIONAL ENGINEERING CONSULTANTS, P.A.
 303 SOUTH TOPEKA WICHITA, KS 67202
 316-262-2891 www.pec1.com

PEC

Designed by JPS
 Drawn by SVB

Job No. 08207
 Date August, 2013

Sheet 16 of 193