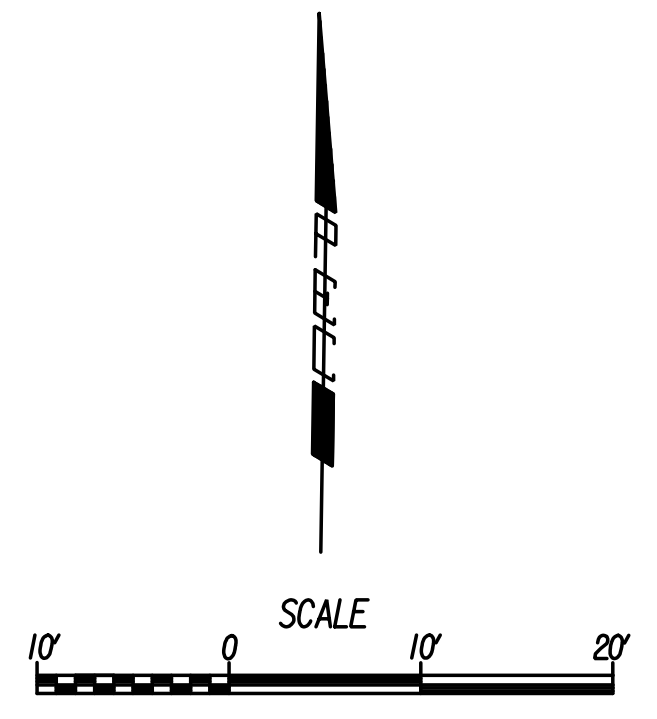
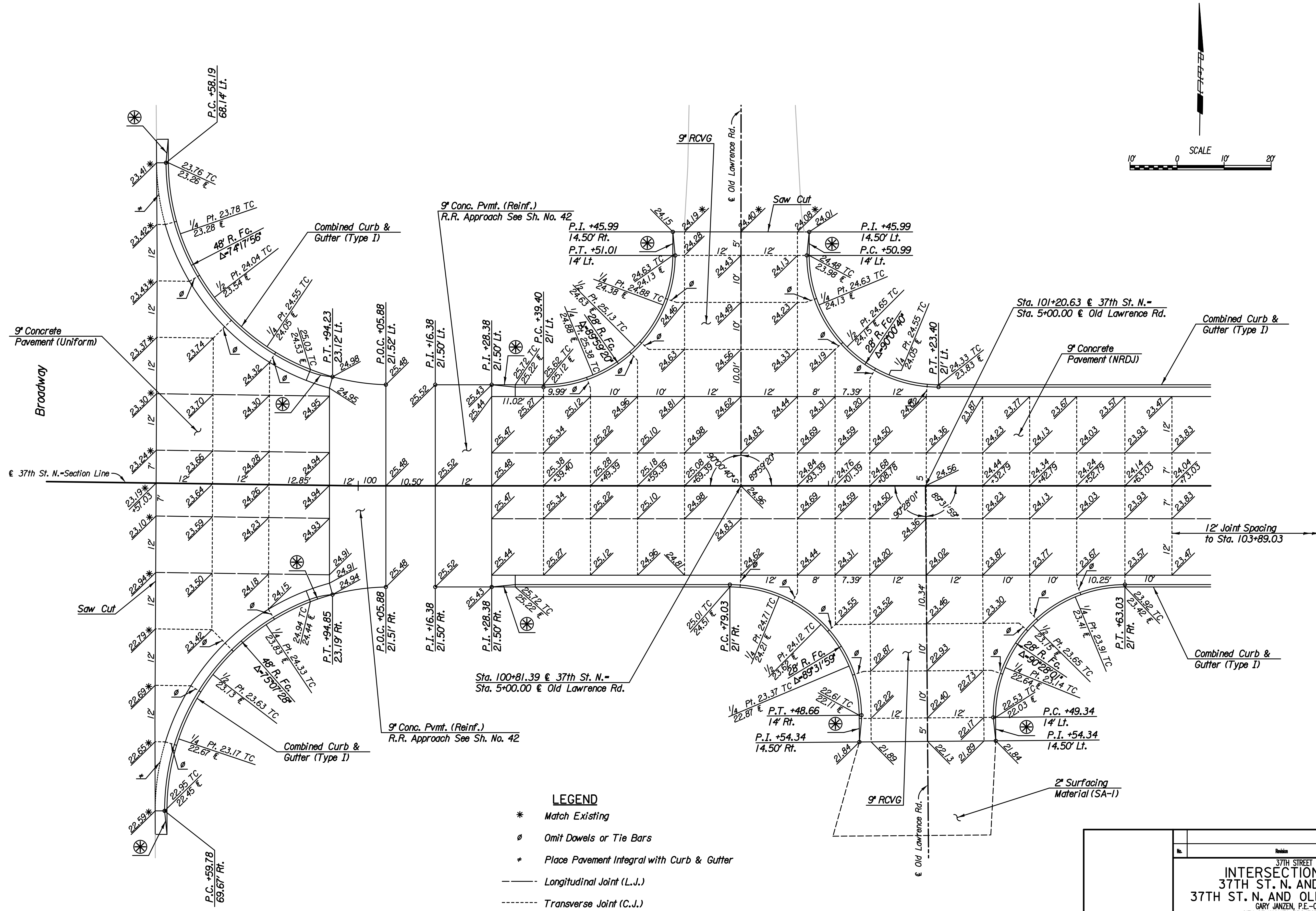


Plotted By: svb Date: 8/5/2013 1:59:45 PM
 FILE: I:\2008\0820\Intersections\08207-intersections\0_Ld_Lawrence.dgn



- LEGEND**
- * Match Existing
 - Ø Omit Dowels or Tie Bars
 - * Place Pavement Integral with Curb & Gutter
 - Longitudinal Joint (L.J.)
 - - - - - Transverse Joint (C.J.)
 - ⊗ 5' transition from Combined Curb & Gutter (Type I) to no curb.
- See Sh. No. 44 for Valley Gutter Details.

No.	Revision	By	Date
37TH STREET NORTH INTERSECTION DETAILS 37TH ST. N. AND BROADWAY 37TH ST. N. AND OLD LAWRENCE RD. GARY JANZEN, P.E.-CITY ENGINEER CITY OF WICHITA PROJECT NO. 472-84692			
PROFESSIONAL ENGINEERING CONSULTANTS, P.A. 303 SOUTH TOPEKA WICHITA, KS 67202 316-262-2691 www.pec1.com			
Designed by	JPS	Job No.	08207
Drawn by	SVB	Date	August, 2013
			Sht. 36 of 193