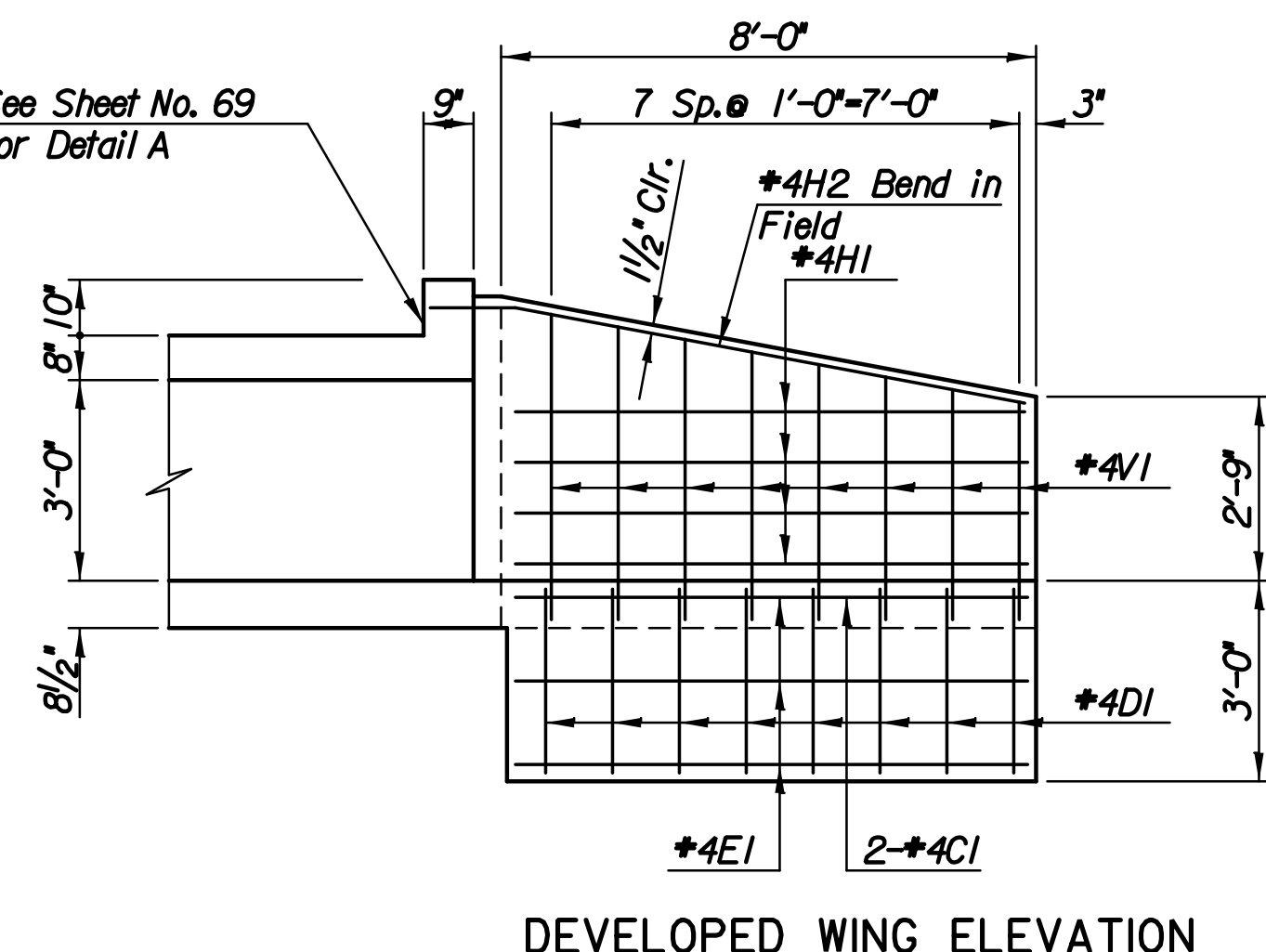
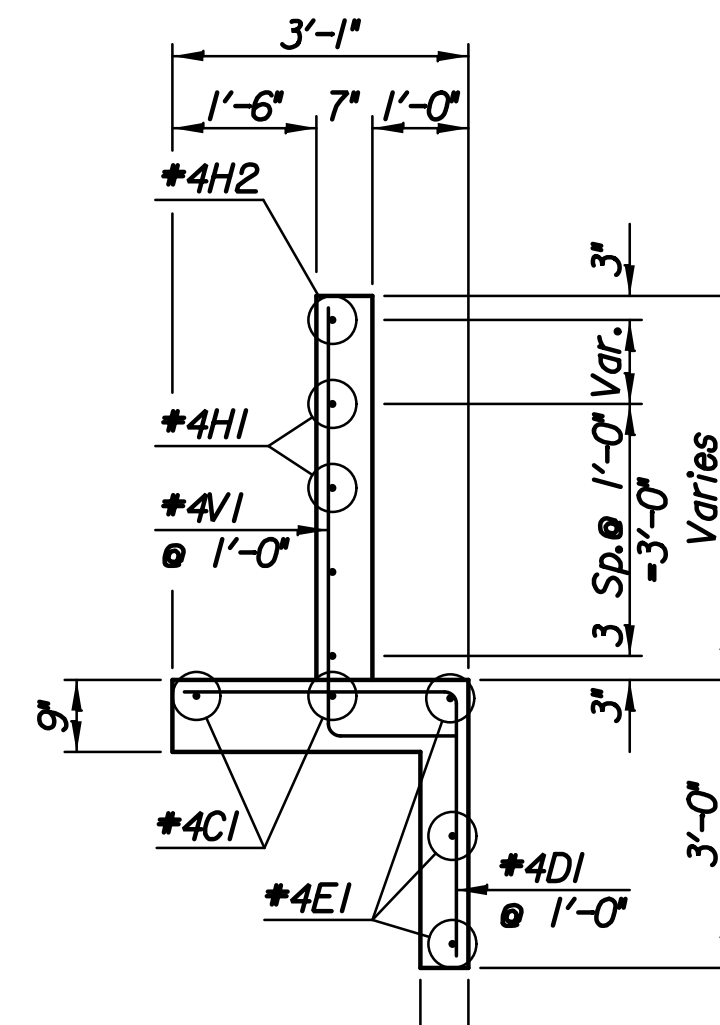


DEVELOPED WING ELEVATION  
(Downstream End)



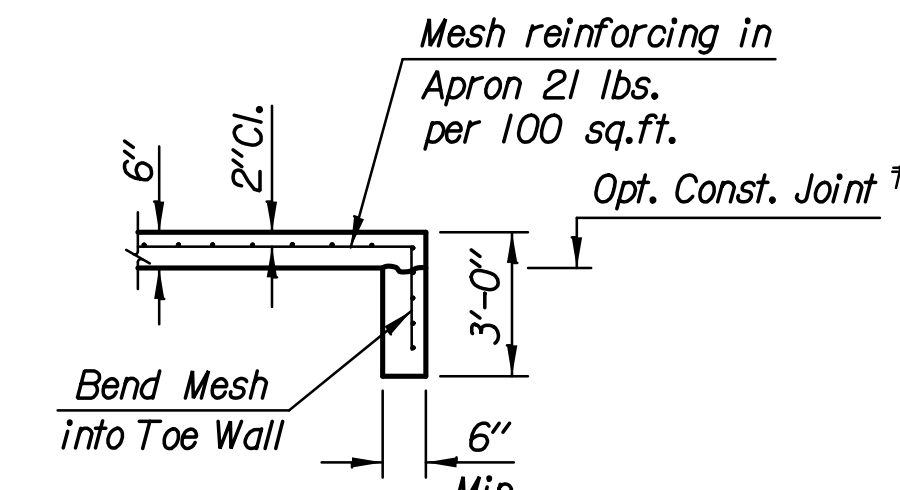
DEVELOPED WING ELEVATION  
(Upstream End)



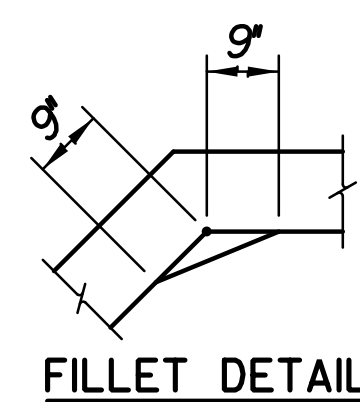
SECTION A-A

APRON: A 6" concrete slab shall be constructed between the wings. Wire Reinforcing mesh shall be electrically welded and shall be composed of 6 x 6" composed of 6" x 6" W1.4 x W1.4 welded wire fabric and shall be classified as pounds of reinforcing.

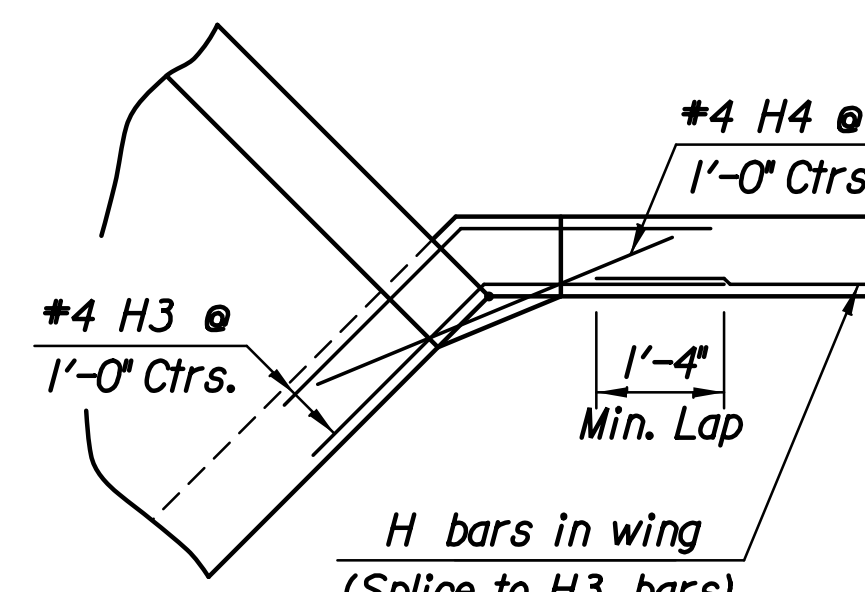
\* NOTE: Const. Jt. may be used at Contractor's option when approved by the Engineer. DI bars or mesh may be spliced thus: Minimum overlap shall be 1'-3". No increase in quantities or cost shall be allowed when Contractor elects this option.



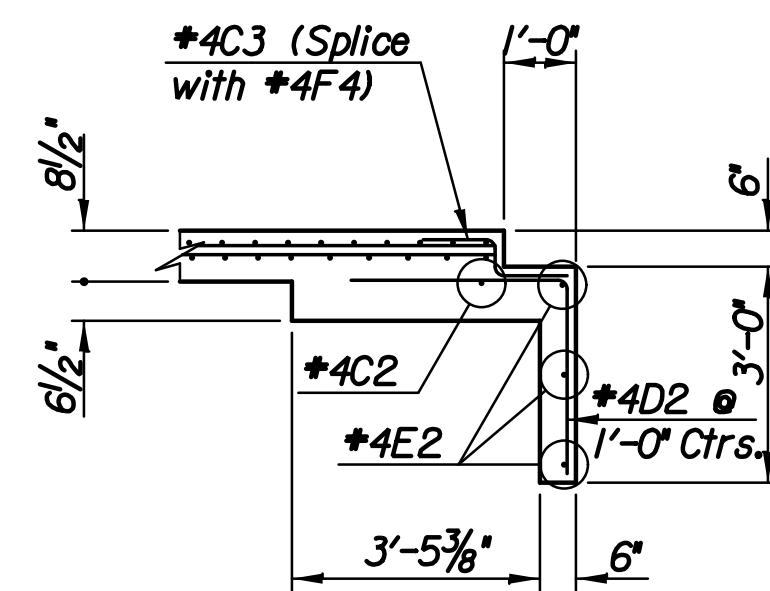
APRON SECTION



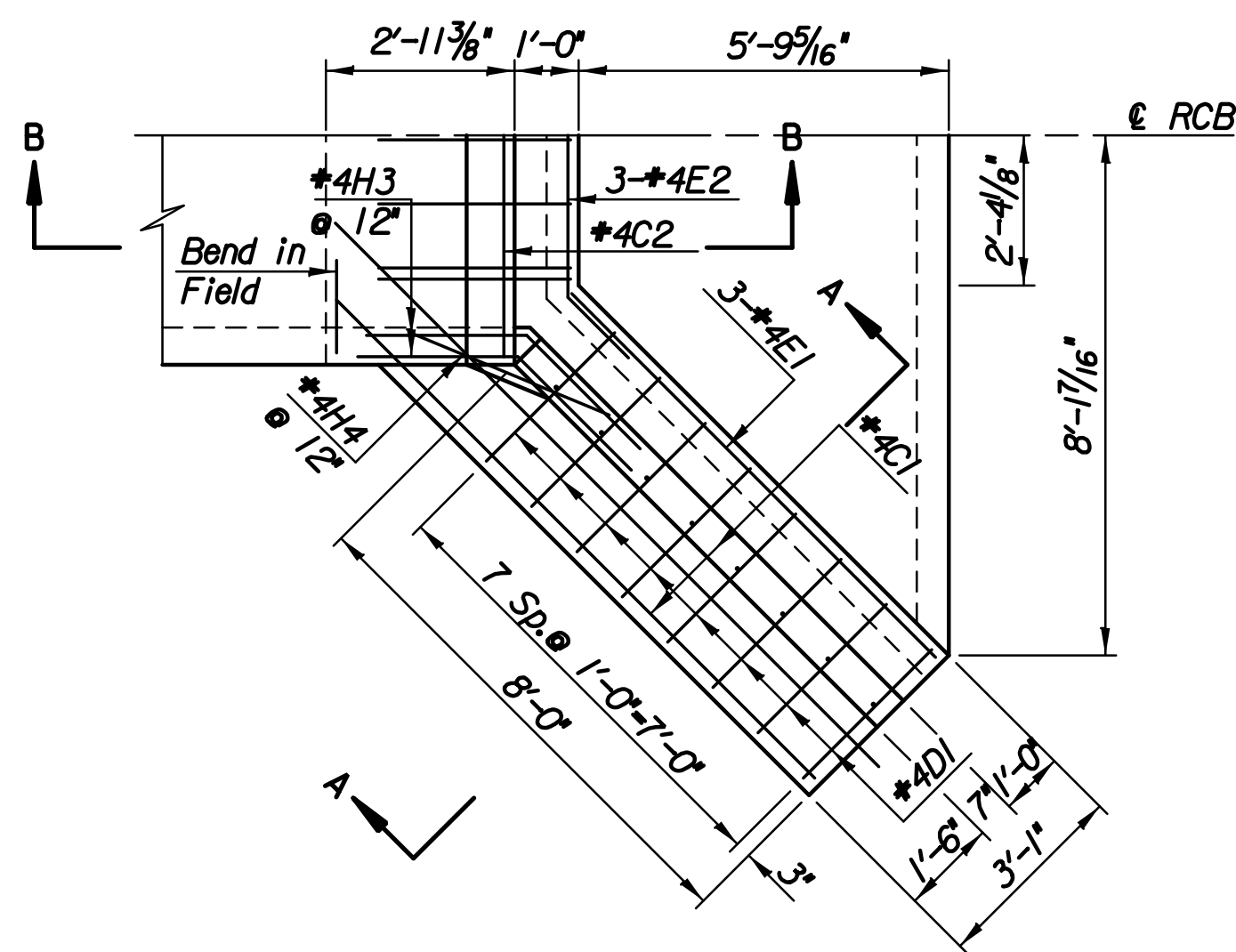
FILLET DETAIL



DETAIL OF 9' x 9' FILLET  
(Plan View)

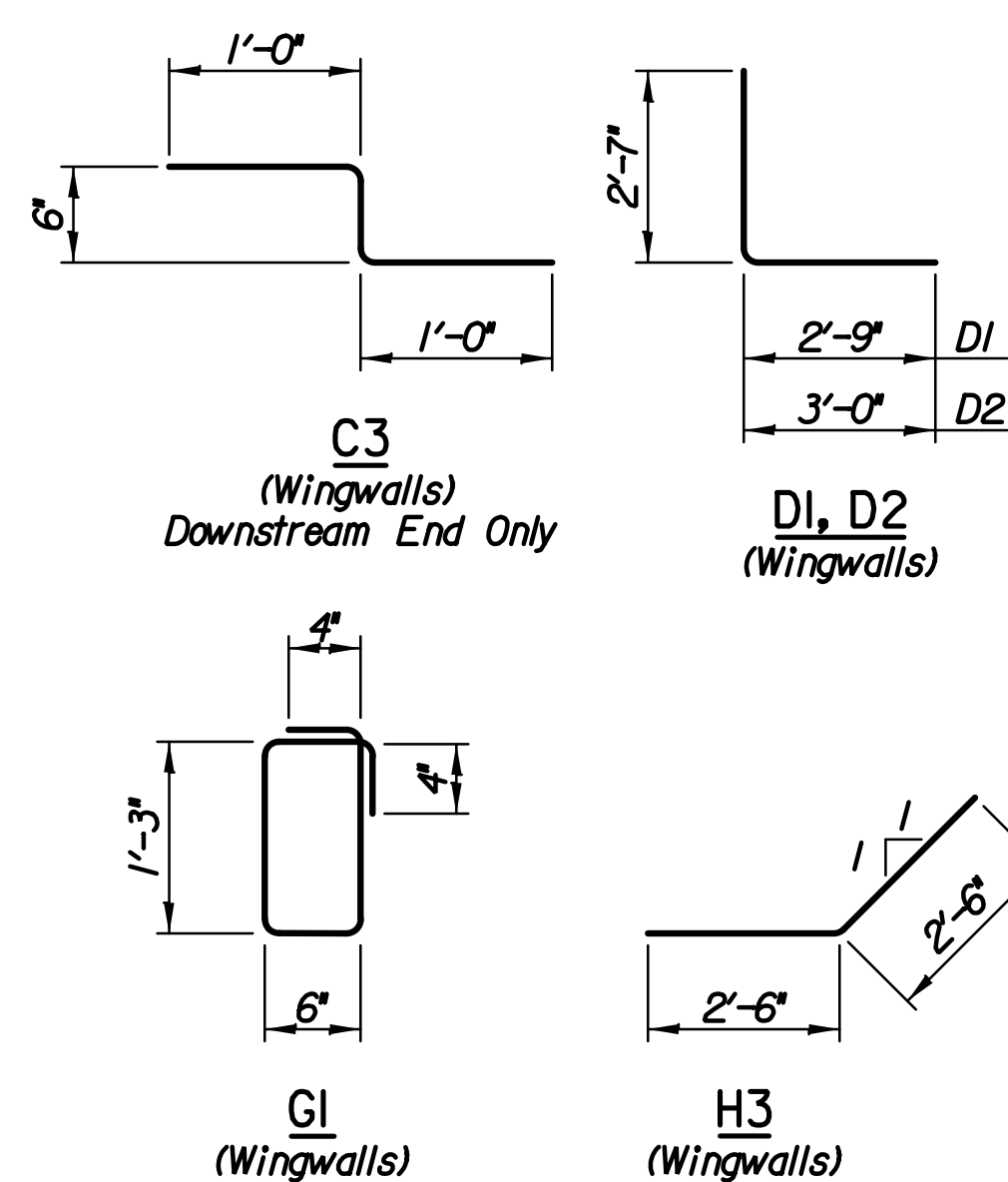


SECTION B-B  
(Outfall End)

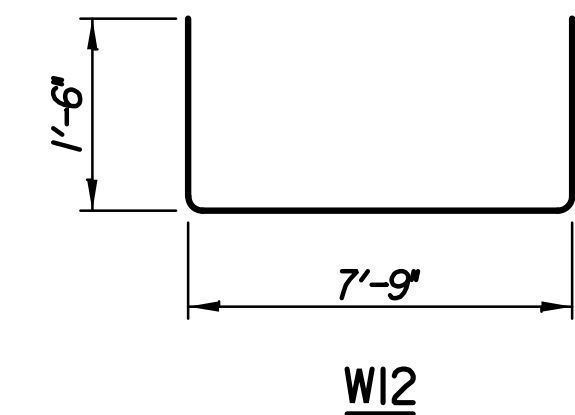


PLAN

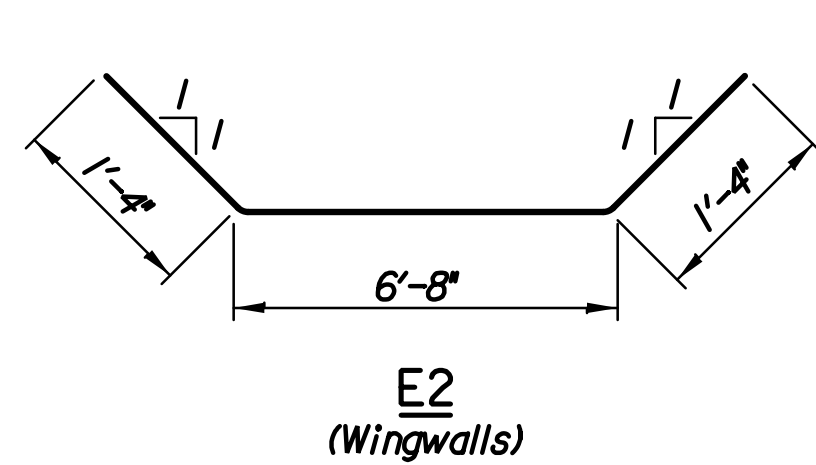
WINGWALL DETAILS



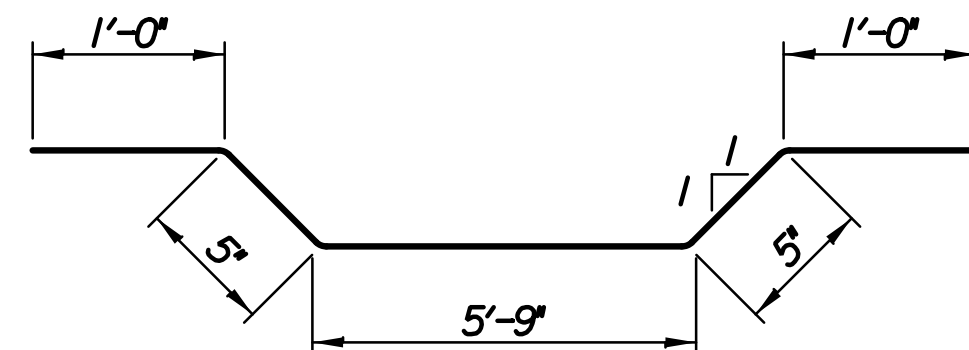
BENDING DIAGRAMS  
All dimensions are out to out of bars.



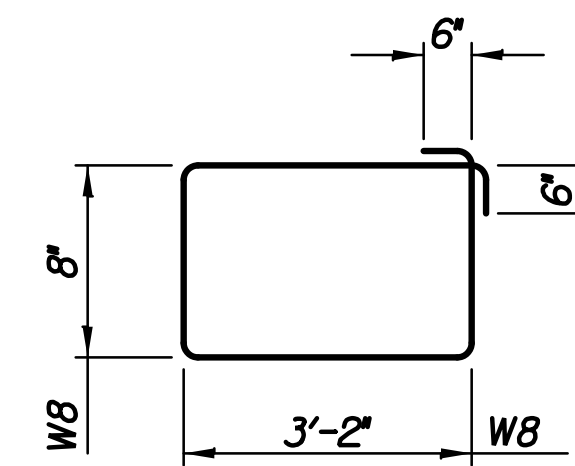
W12



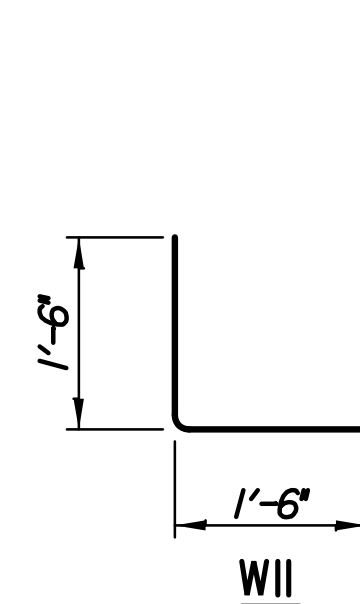
E2  
(Wingwalls)



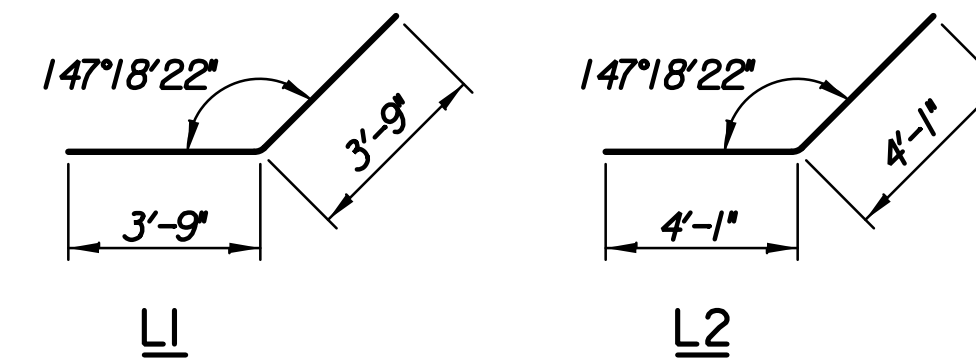
W15



W10

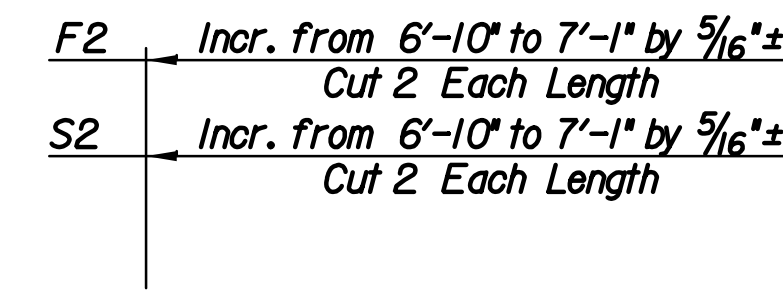


W11



L1

L2



F2 and S2

UPSTREAM WINGWALLS					
C1	#4	4	12'-0"		
C2	#4	1	6'-11"		
E1	#4	6	8'-0"		
G2	#6	2	6'-11"	E2	#4 3 9'-4"
H1	#4	8	8'-0"	G1	#4 7 4'-2"
H2	#4	2	9'-5"	H3	#4 16 5'-0"
H4	#4	8	5'-0"		
V1	#4	16	Varies		

REINFORCING STEEL							
6'x3'x42'-3" R.C.B. SECTION - 2							
Straight Bars				Bent Bars			
Mark	Size	Number	Length	Mark	Size	Number	Length
F1	#5	78	7'-0"	L1	#4	16	7'-6"
F2	#5	40	Varies	L2	#5	5	8'-2"
F3	#5	66	7'-0"				
F4	#4	10	35'-0"				
F5	#4	10	6'-0"				
F6	#5	2	7'-2"				
S1	#5	77	7'-0"				
S2	#5	40	Varies				
S3	#5	65	7'-0"				
S4	#5	5	35'-0"				
S5	#4	5	35'-0"				
S6	#4	5	5'-0"				
S7	#5	5	5'-0"				
S8	#5	2	7'-2"				
W1	#4	114	4'-1"				
W2	#4	4	5'-0"				
W3	#4	4	35'-0"				

SLUICE GATE STRUCTURE							
W4	#5	60	7'-9"	W5	#5	36	7'-5"
W6	#5	10	13'-7"	W10	#5	10	8'-8"
W7	#5	12	13'-7"	W11	#5	11	3'-0"
W8	#5	12	17'-4"	W12	#6	11	10'-9"
W9	#6	8	7'-9"	W15	#5	9	8'-7"
W13	#6	11	7'-9"				
W14	#5	9	6'-0"				

6'x3'x40'-0" R.C.B. SECTION - 1							
F1	#5	87	7'-0"				
F3	#5	74	7'-0"				
F4	#4	10	40'-8"				
S1	#5	87	7'-0"				
S3	#5	74	7'-0"				
S4	#5	5	40'-8"				
S5	#4	5	40'-8"				
W1	#4	108	4'-1"				
W3	#4	4	40'-8"				

UPSTREAM WINGWALLS				DOWNSTREAM WINGWALLS			
C1	#4	4	12'-0"	C3	#4	7	2'-6"
C2	#4	1	6'-11"	D1	#4	16	5'-4"
E1	#4	6	8'-0"	D2	#4	7	5'-7"
G2	#6	2	6'-11"	E2	#4	3	9'-4"
H1	#4	8	8'-0"	G1	#4	7	4'-2"
H2	#4	2	9'-5"	H3	#4	16	5'-0"
H4	#4	8	5'-0"				
V1	#4	16	Varies				

* BILL OF MATERIALS		
Item	Quantity	Unit
Class AAA Concrete	70.2	C.Y.
Reinforcing Steel (Epoxy Coated)	9,819	Lbs.

\* Includes Sluice Structure, 6'x3'x42'-3" R.C.B., 6'x3'x40'-0" R.C.B., Wingwalls and Wingwall Aprons.

37TH STREET NORTH  
**MISCELLANEOUS DETAILS AND REINFORCING**  
 GARY JANZEN, P.E.-CITY ENGINEER  
 CITY OF WICHITA PROJECT NO. 472-84692

**PEC** PROFESSIONAL ENGINEERING CONSULTANTS, P.A.  
 303 SOUTH TOPEKA WICHITA, KS 67202  
 316-262-2691 www.pec1.com

Designed by RAS Job No. 08207  
 Drawn by WLL Date August, 2013 Sht. 70 of 193