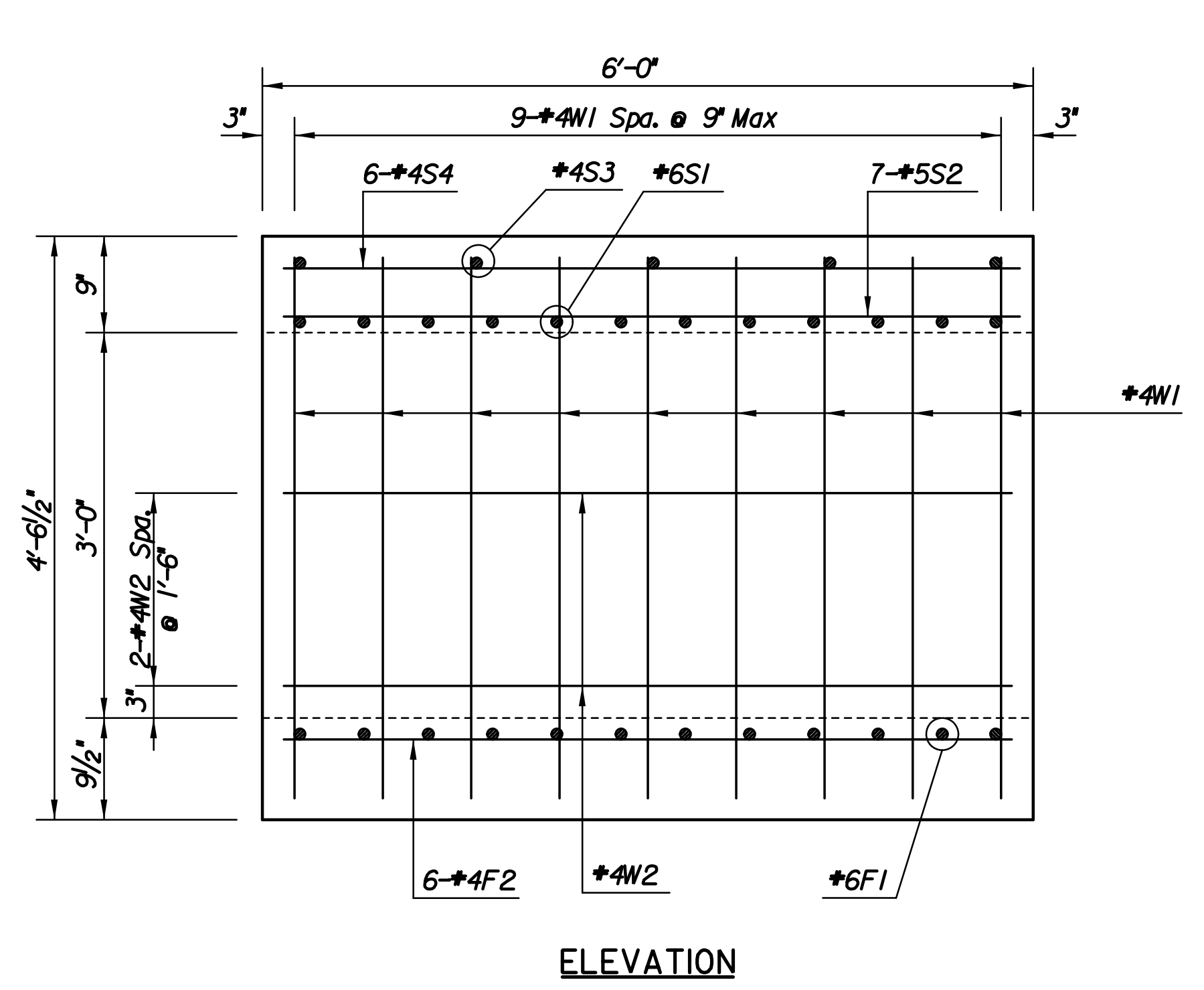
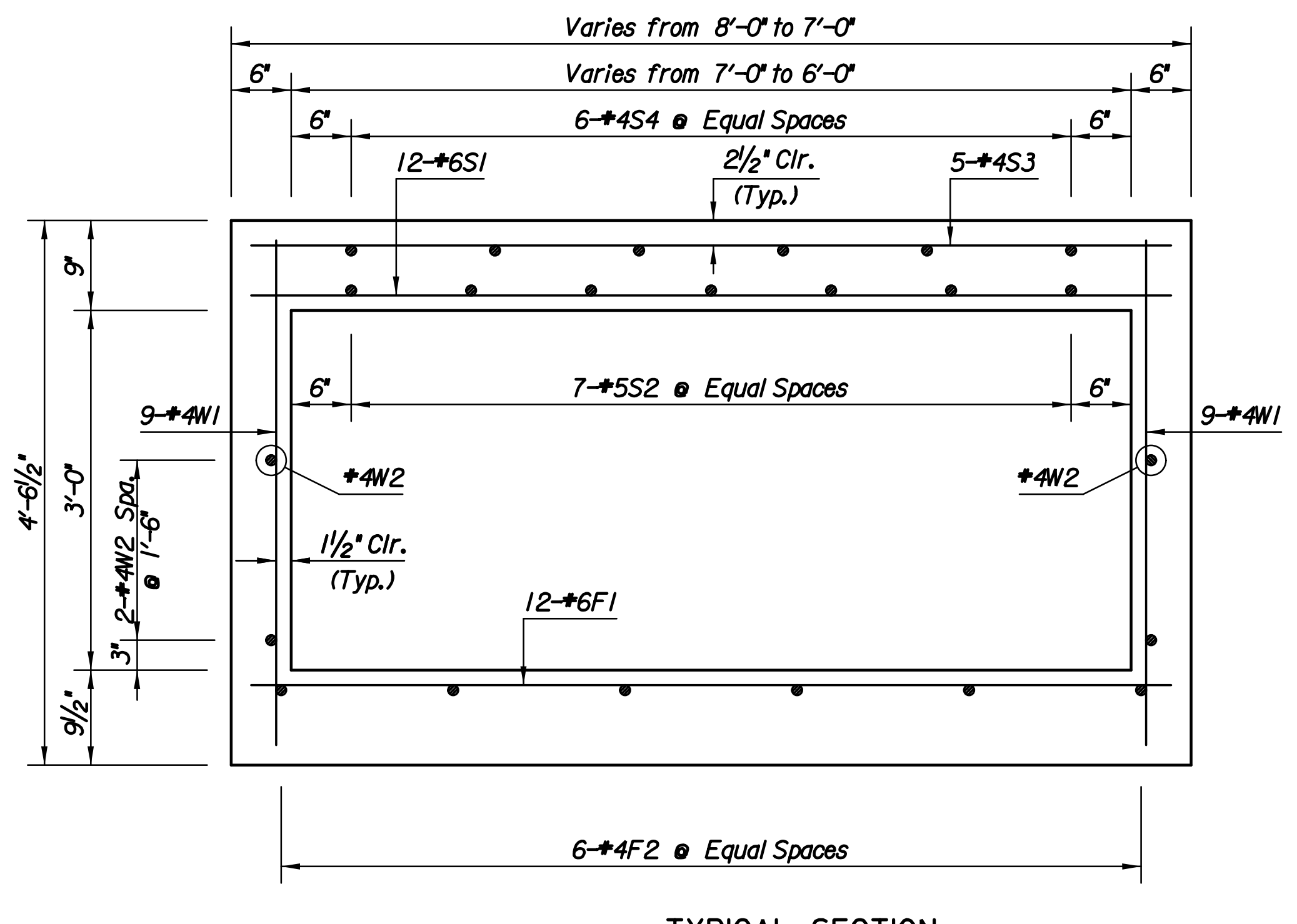


Plotted By: svb Date: 8/19/2013 9:37:40 AM  
 FILE: I:\2008\0820\0820\0820\08207 - RCB 7x3 TO 6x3 Transition.dgn



ELEVATION

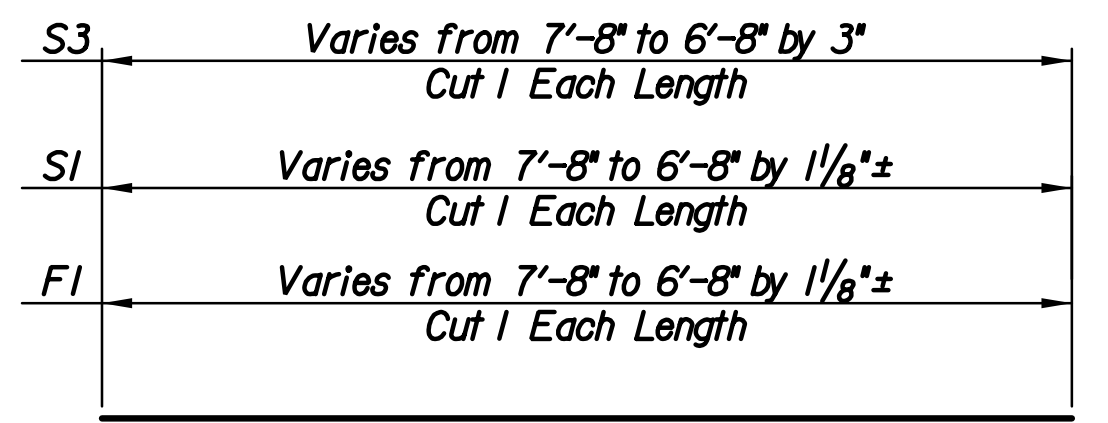


TYPICAL SECTION

REINFORCING STEEL							
Straight Bars				Bent Bars			
Mark	No.	Size	Length	Mark	No.	Size	Length
F1	12	#6	VARIABLES				
F2	6	#4	5'-8"				
S1	12	#6	VARIABLES				
S2	7	#5	5'-8"				
S3	5	#4	VARIABLES				
S4	6	#4	5'-8"				
W1	18	#4	4'-3"				
W2	4	#4	5'-8"				

BILL OF MATERIALS *			
Item	Quantity	Unit	
Concrete	3.24	C.Y.	
Reinforcing Steel (Grade 60) (Epoxy Coated)	433	Lbs.	

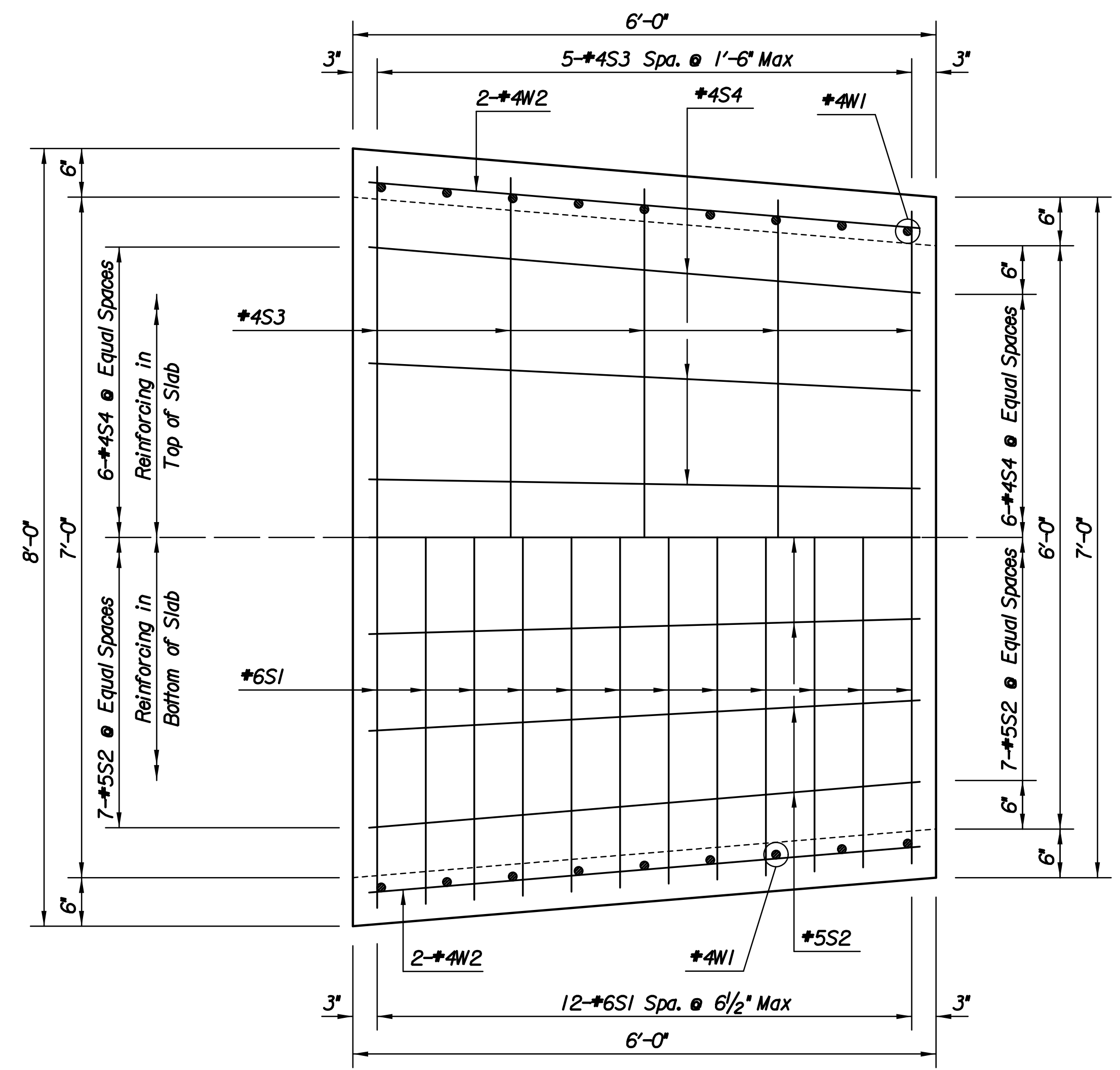
\* For Information Only



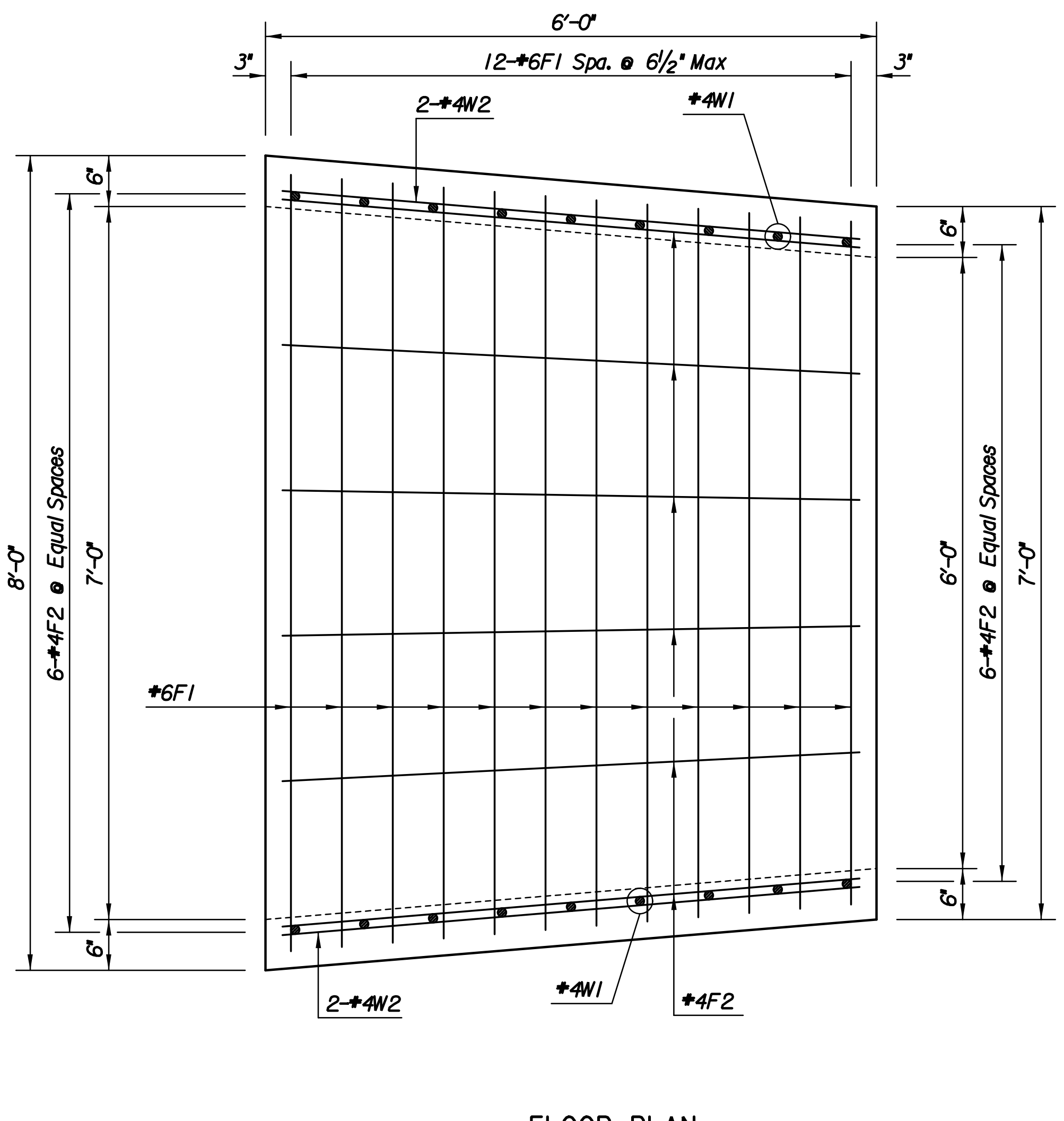
F1, S1, S3

BENDING DIAGRAM  
 Dimensions are out to out of bars

Note:  
 Match cast connection joints for pre-cast to Transition Section ends.



SLAB PLAN



FLOOR PLAN

No.	Revision	By	Date
	37TH STREET NORTH		STA. 117+36
<b>7'X3' TO 6'X3'</b> <b>RCB TRANSITION</b> GARY JANZEN, P.E.-CITY ENGINEER CITY OF WICHITA PROJECT NO. 472-84692			
		PROFESSIONAL ENGINEERING CONSULTANTS, P.A. 303 SOUTH TOPEKA WICHITA, KS 67202 316-262-2691 www.pec1.com	
Designed by	MLB	Job No.	08207
Drawn by	MLB	Date	August, 2013

Sht. 77 of 193