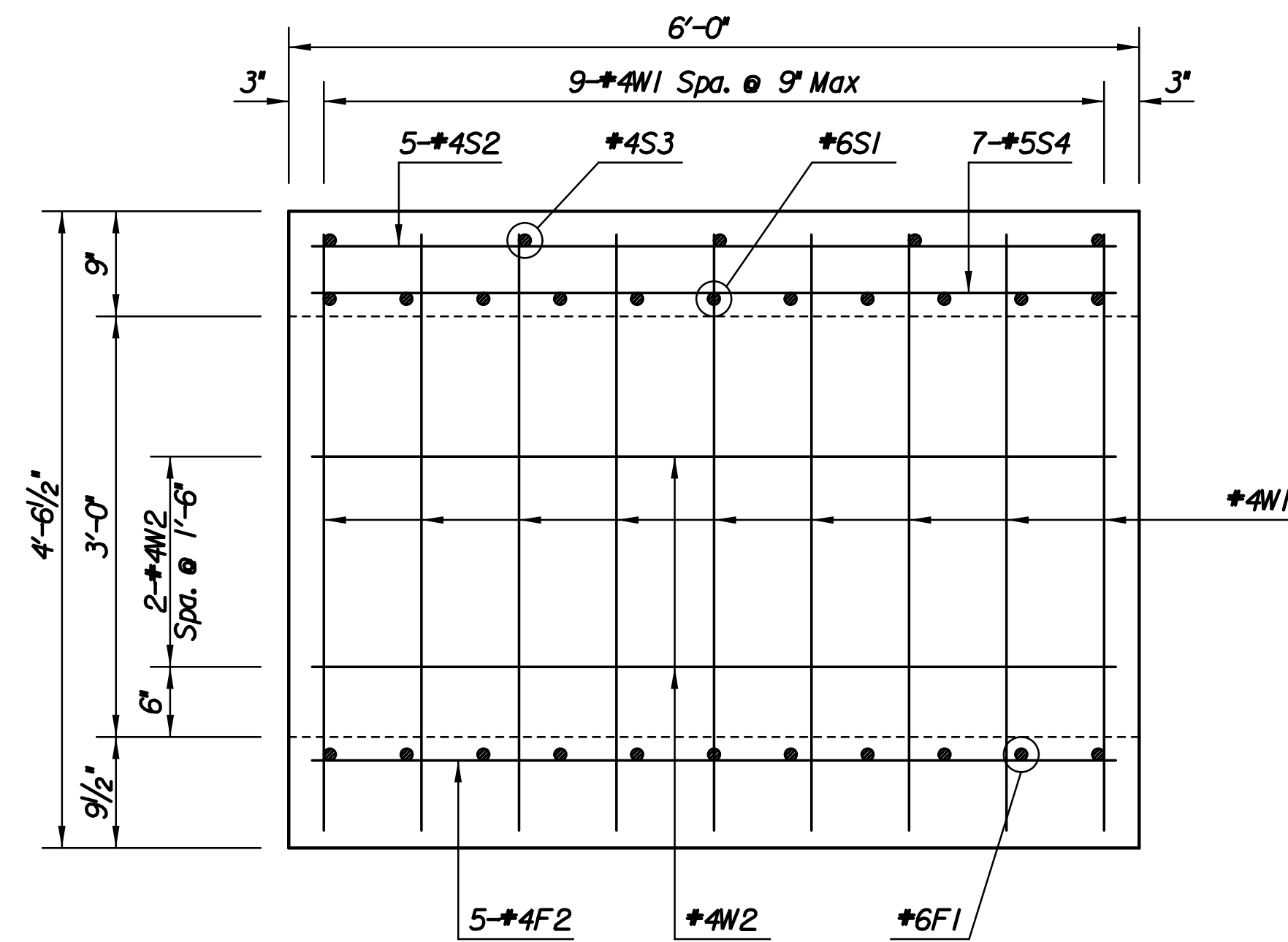
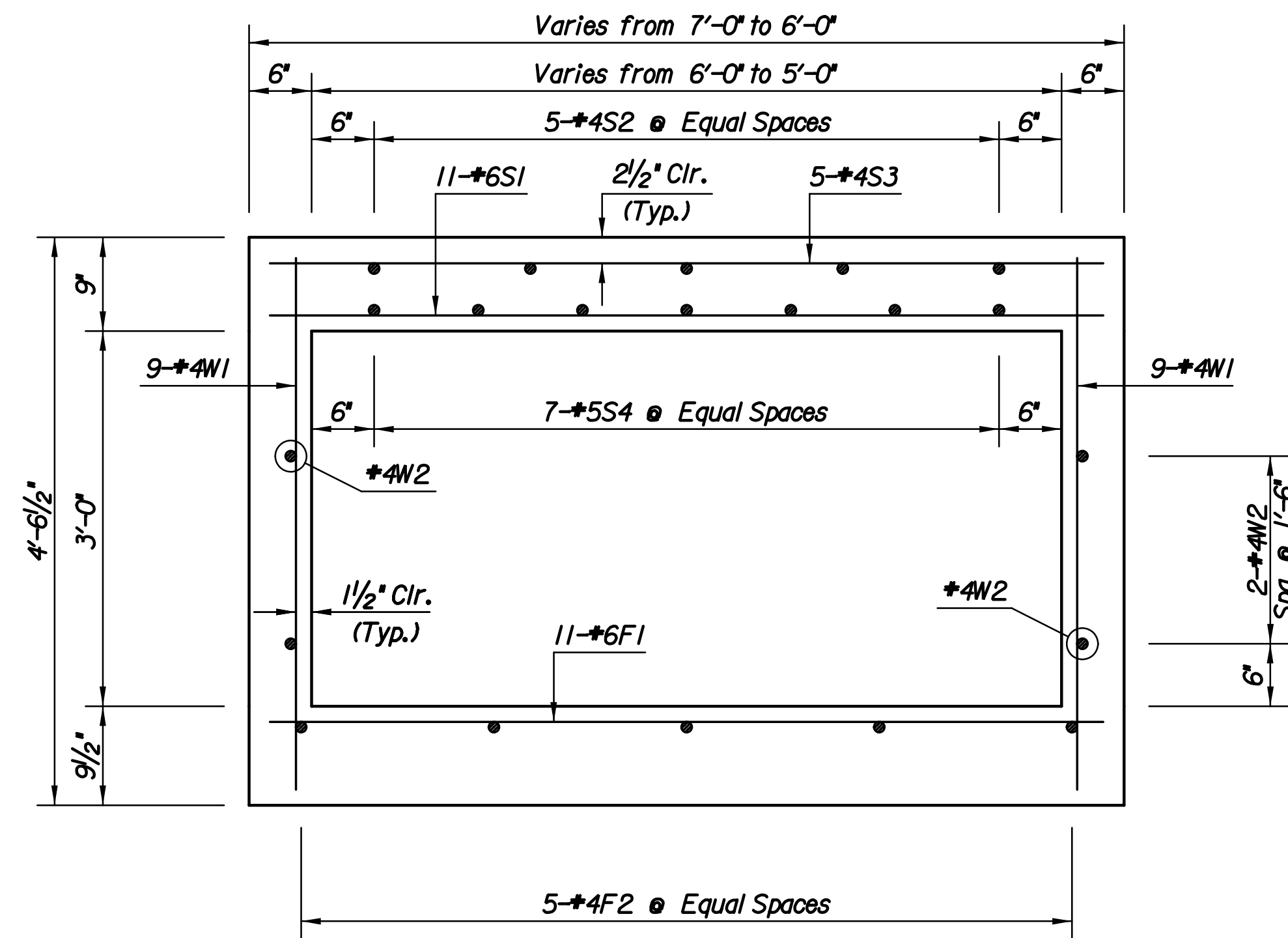


Plotted By: svb Date: 8/19/2013 9:38:56 AM  
 FILE: I:\2008\0820\Bridg\Final\08207 - RCB 6x3 TO 5x3 Transition.dgn



ELEVATION

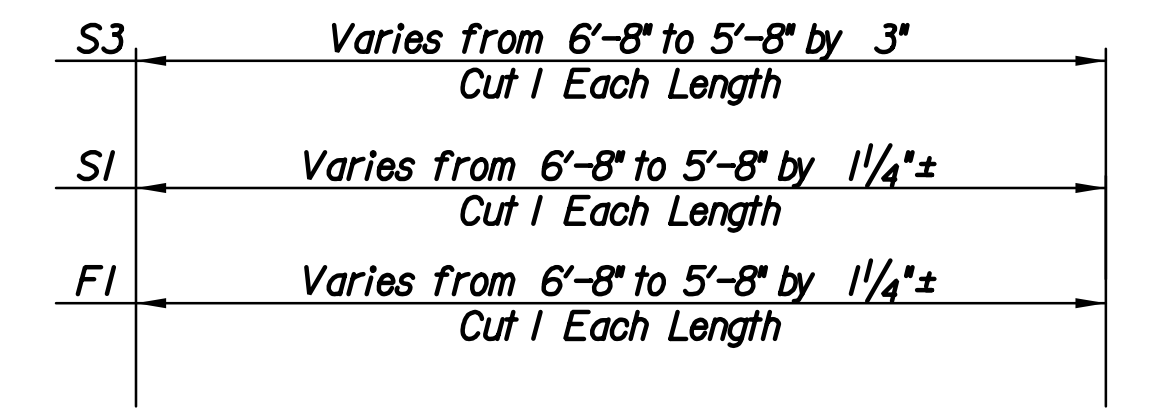


TYPICAL SECTION

REINFORCING STEEL							
Straight Bars				Bent Bars			
Mark	No.	Size	Length	Mark	No.	Size	Length
F1	11	#6	VARIABLES				
F2	5	#4	5'-8"				
S1	11	#6	VARIABLES				
S2	5	#4	5'-8"				
S3	5	#4	VARIABLES				
S4	7	#5	5'-8"				
W1	18	#4	4'-2"				
W2	4	#4	5'-8"				

BILL OF MATERIALS *			
Item	Quantity	Unit	
Concrete	2.89	C.Y.	
Reinforcing Steel (Grade 60) (Epoxy Coated)	369	Lbs.	

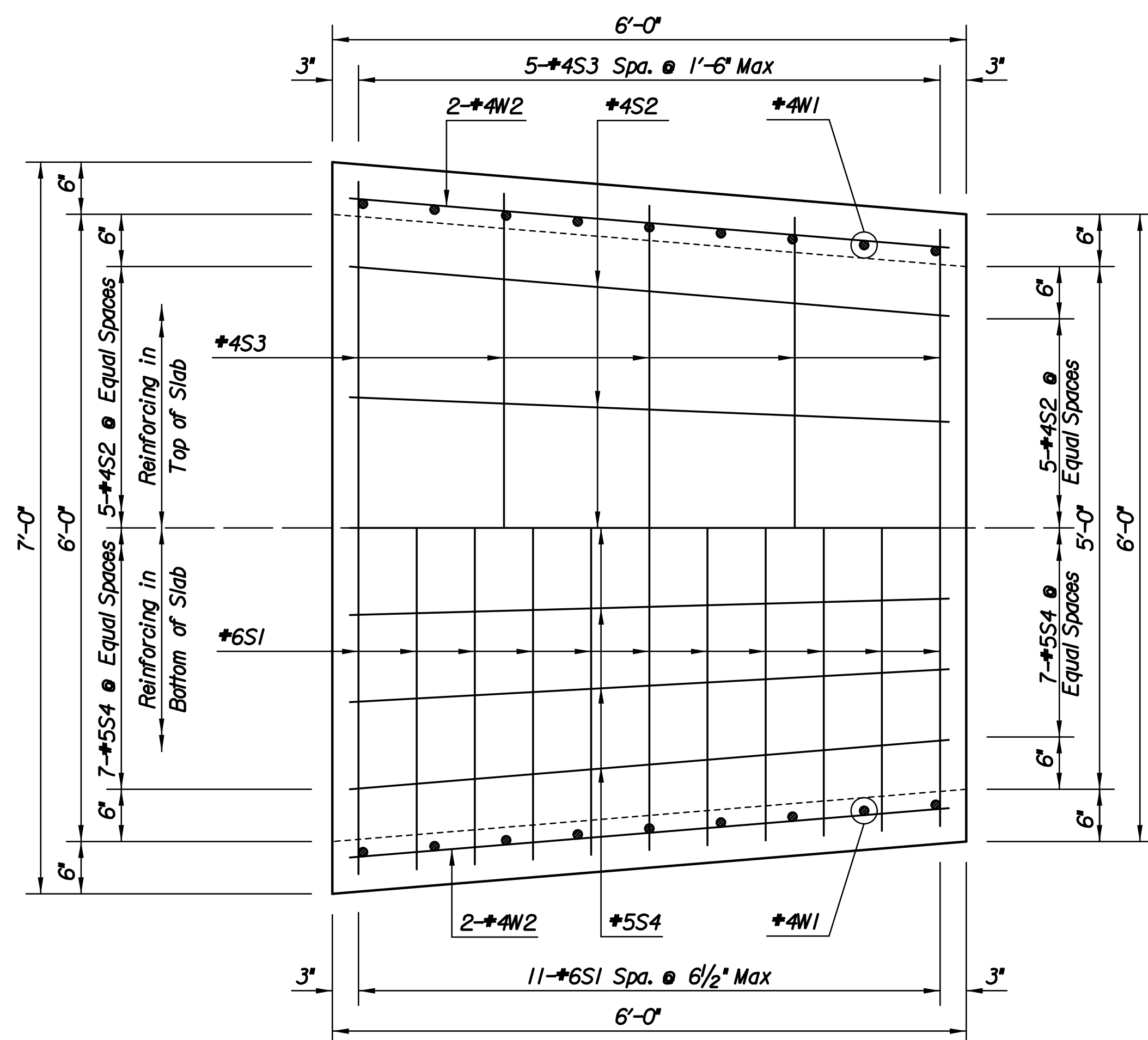
\* For Information Only



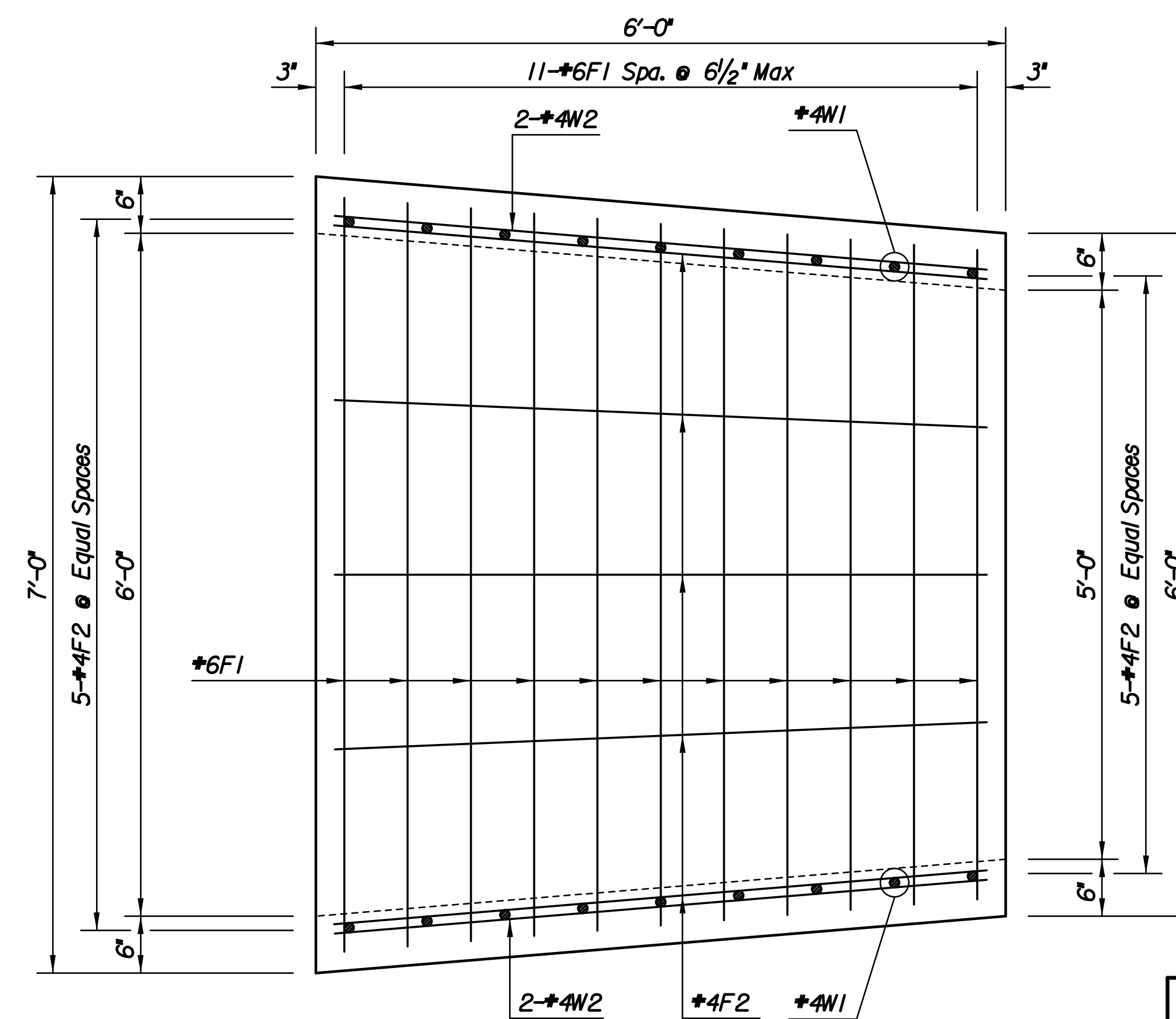
F1, S1, S3

BENDING DIAGRAM  
 Dimensions are out to out of bars

Note:  
 Match cast connection joints for pre-cast to Transition Section ends.



SLAB PLAN



FLOOR PLAN

No.	Revision	By	Date
37TH STREET NORTH STA. 128+80			
<b>6'X3' TO 5'X3'</b>			
<b>RCB TRANSITION</b>			
GARY JANZEN, P.E.-CITY ENGINEER			
CITY OF WICHITA PROJECT NO. 472-84692			
<b>PEC</b> PROFESSIONAL ENGINEERING CONSULTANTS, P.A.			
303 SOUTH TOPEKA WICHITA, KS 67202			
316-262-2691 www.pec1.com			
Designed by	CWPJ	Job No.	08207
Drawn by	CWPJ	Date	August, 2013
			Sh. 78 of 193