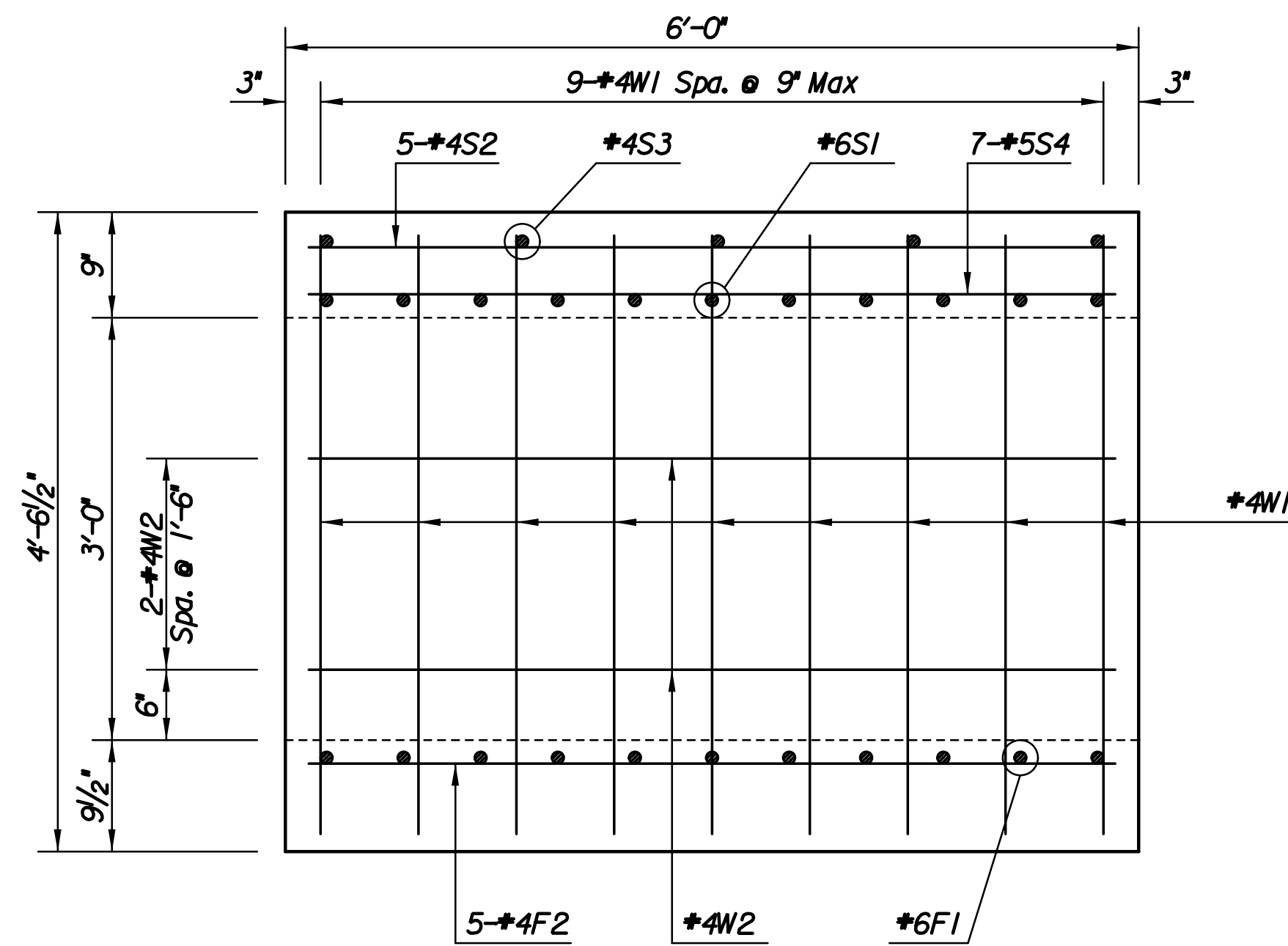
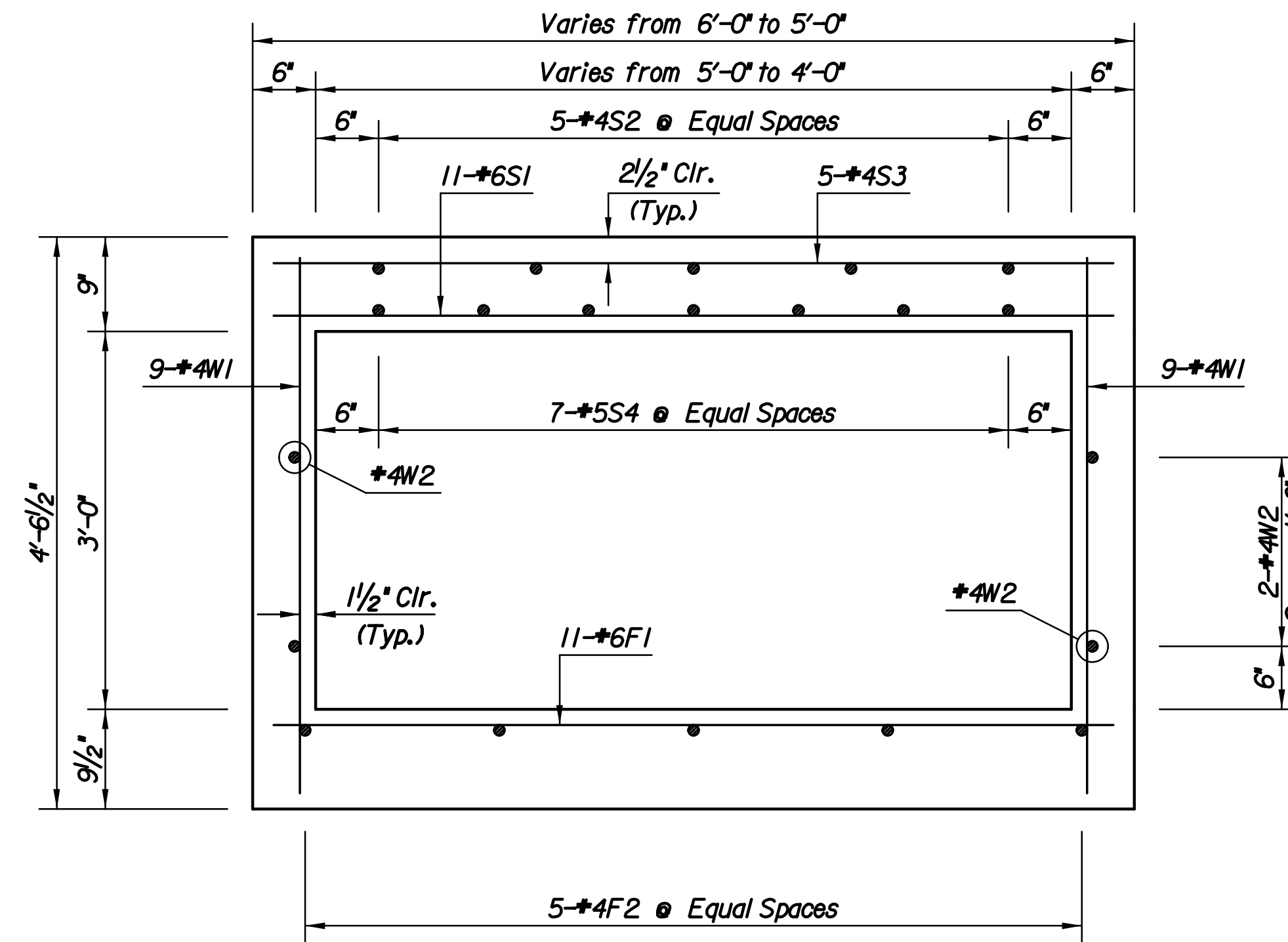


Plotted By: svb Date: 8/19/2013 9:39:55 AM
 FILE: I:\2008\0820\Bridg\Final\08207 - RCB 5x3 TO 4x3 Transition.dgn



ELEVATION

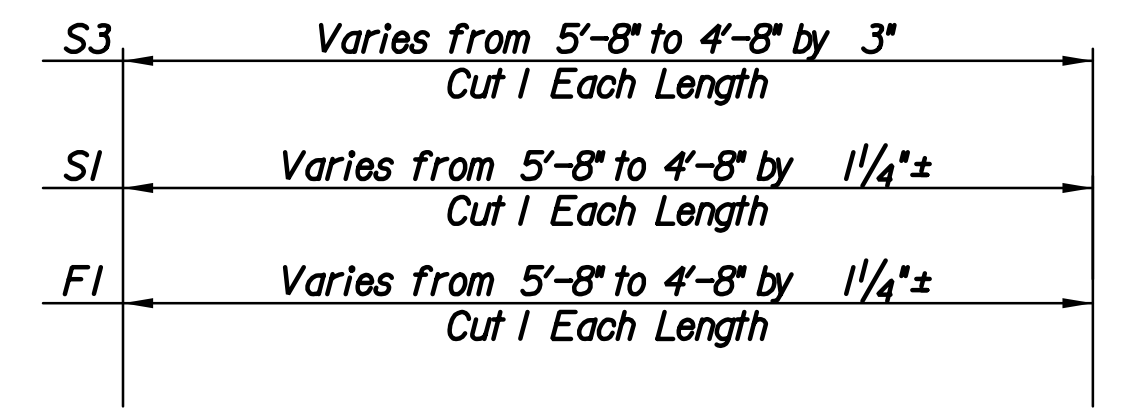


TYPICAL SECTION

REINFORCING STEEL							
Straight Bars				Bent Bars			
Mark	No.	Size	Length	Mark	No.	Size	Length
F1	11	#6	VARIABLES				
F2	5	#4	5'-8"				
SI	11	#6	VARIABLES				
S2	5	#4	5'-8"				
S3	5	#4	VARIABLES				
S4	7	#5	5'-8"				
WI	18	#4	4'-2"				
W2	4	#4	5'-8"				

BILL OF MATERIALS *			
Item	Quantity	Unit	
Concrete	2.55	C.Y.	
Reinforcing Steel (Grade 60) (Epoxy Coated)	332	Lbs.	

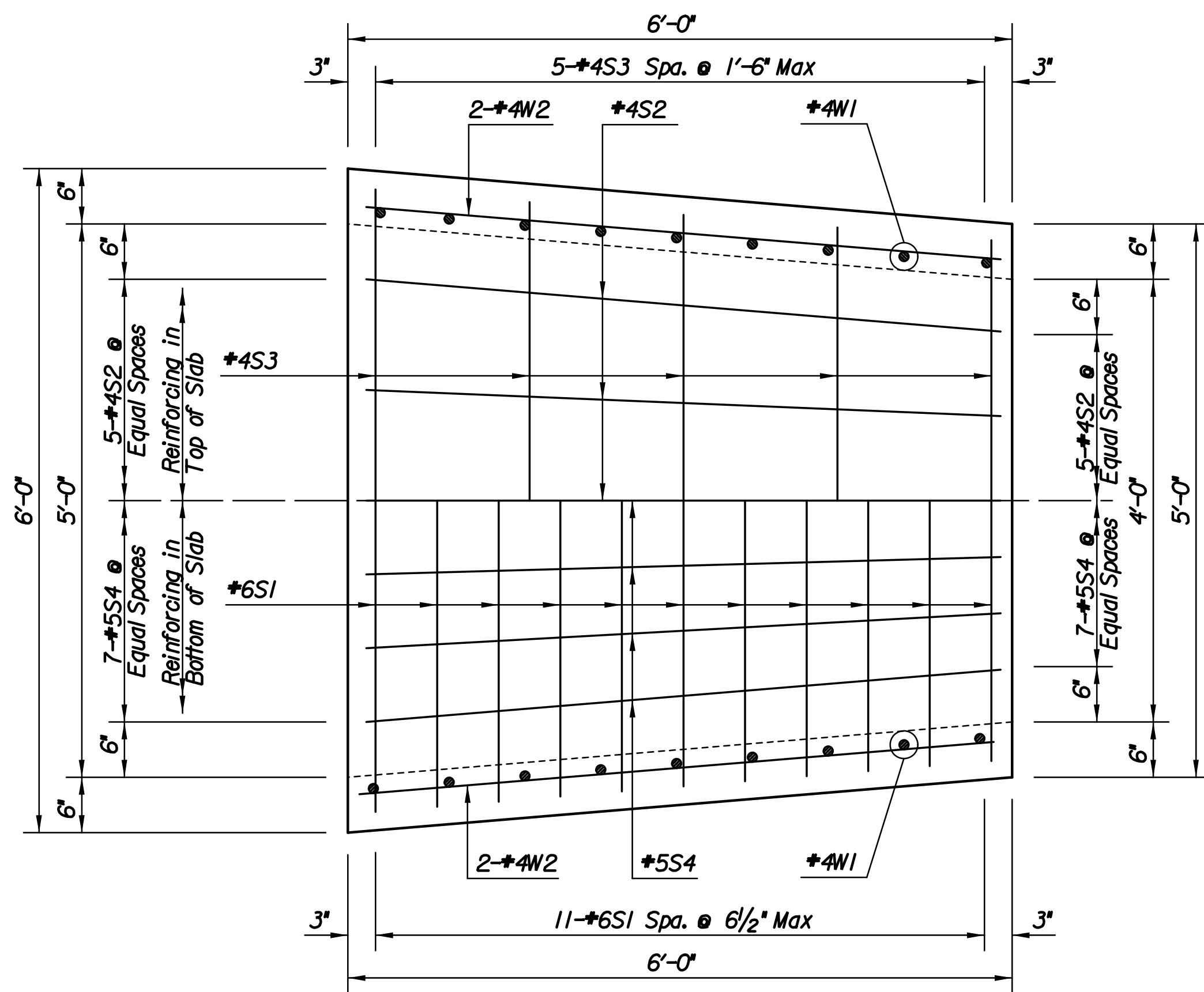
* For Information Only



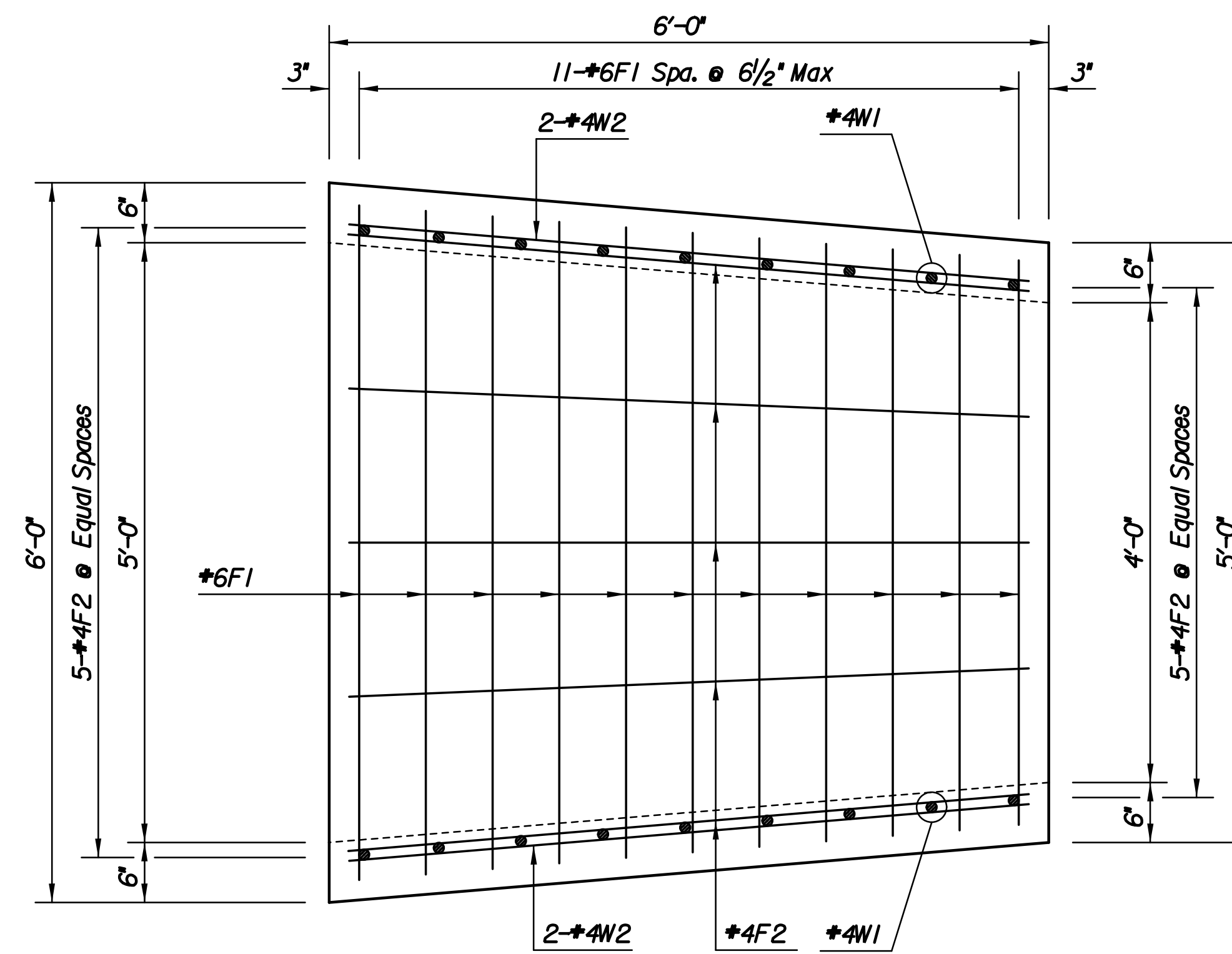
F1, SI, S3

BENDING DIAGRAM
 Dimensions are out to out of bars

Note:
 Match cast connection joints for pre-cast to Transition Section ends.



SLAB PLAN



FLOOR PLAN

No.	Revision	By	Date
	37TH STREET NORTH		STA. 129+83
5'X3' TO 4'X3' RCB TRANSITION GARY JANZEN, P.E.-CITY ENGINEER CITY OF WICHITA PROJECT NO. 472-84692			
		PROFESSIONAL ENGINEERING CONSULTANTS, P.A. 303 SOUTH TOPEKA WICHITA, KS 67202 316-262-2691 www.pec1.com	
Designed by	CWPJ	Job No.	08207
Drawn by	CWPJ	Date	August, 2013
			Sh. 79 of 193