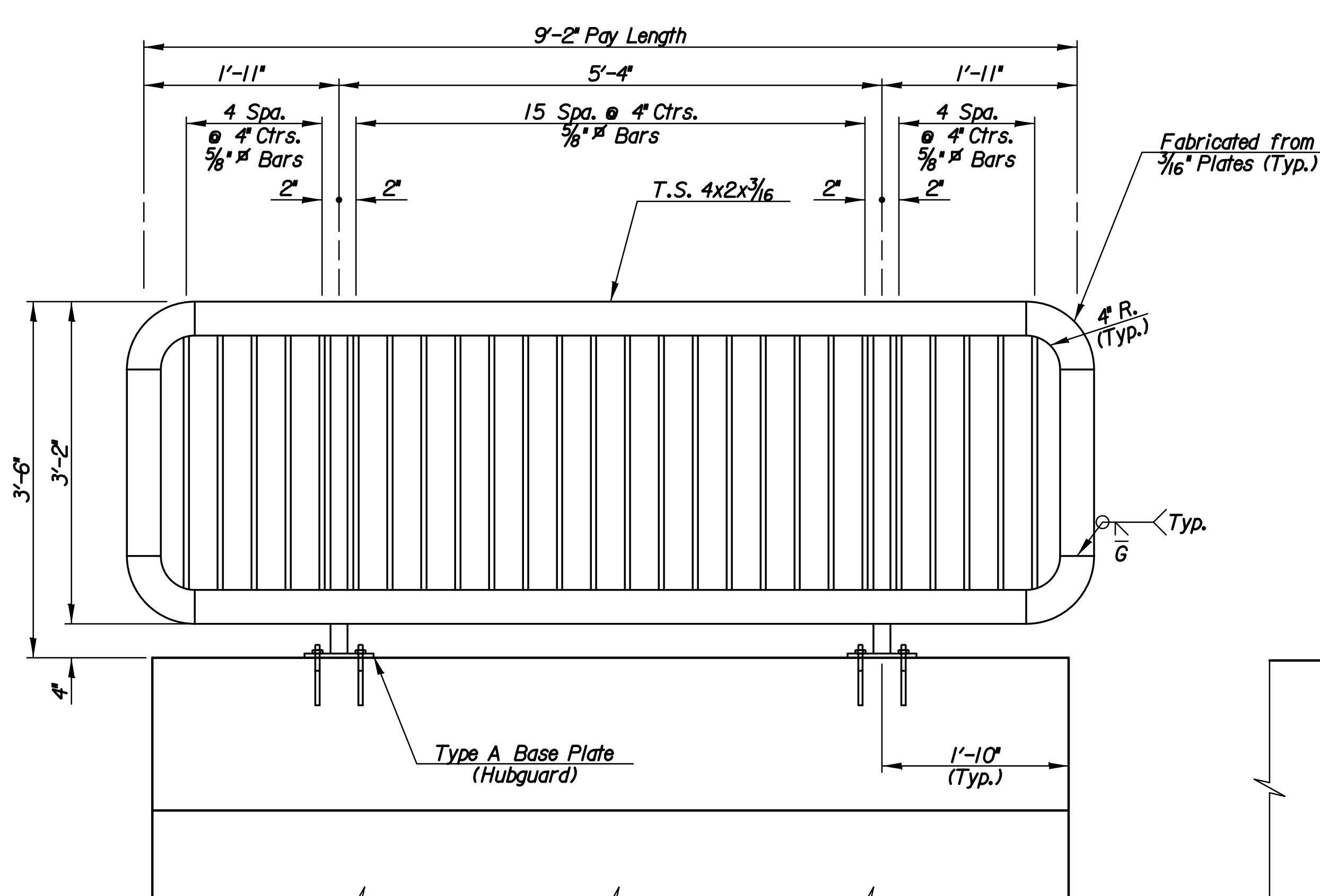
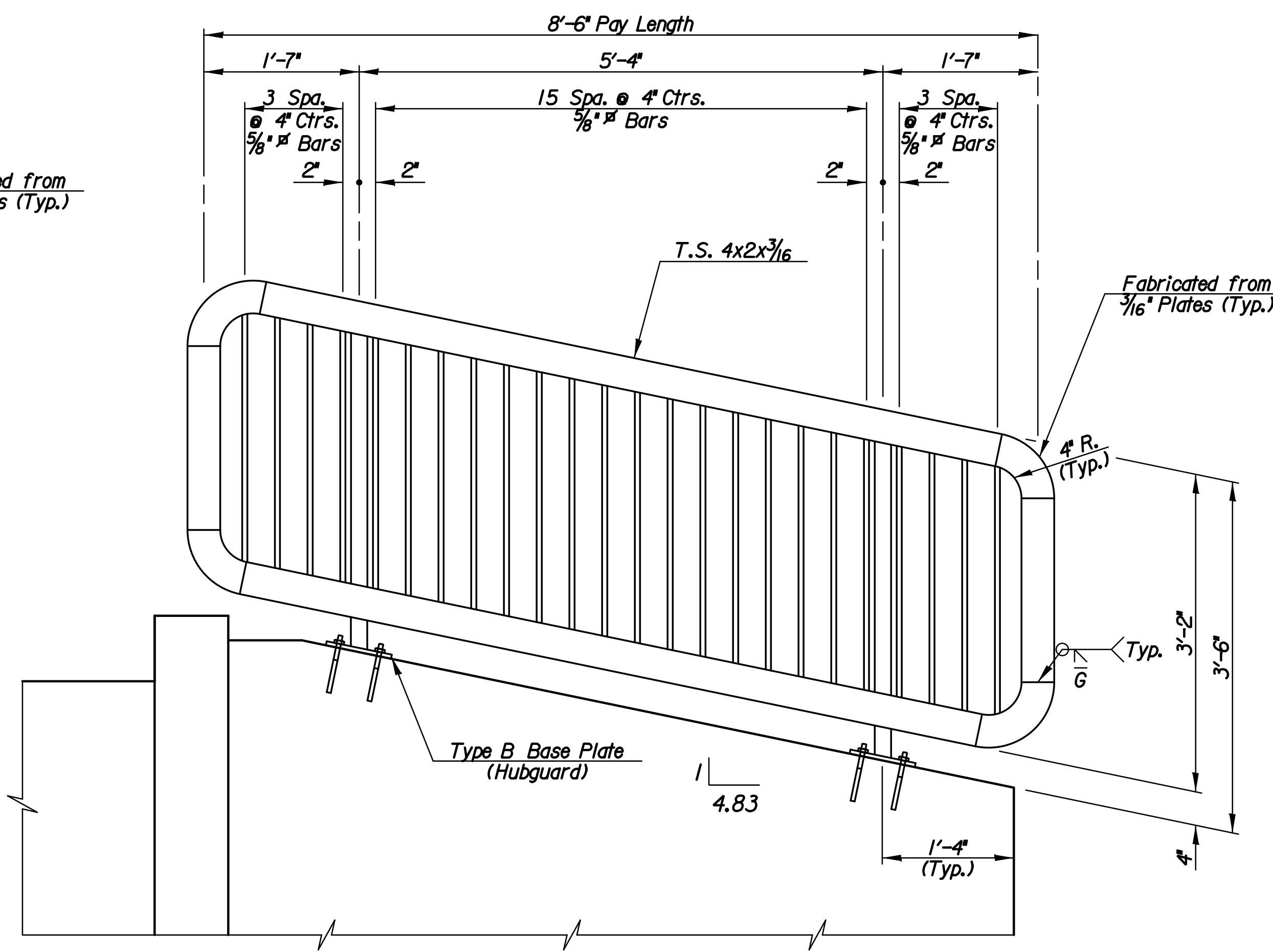


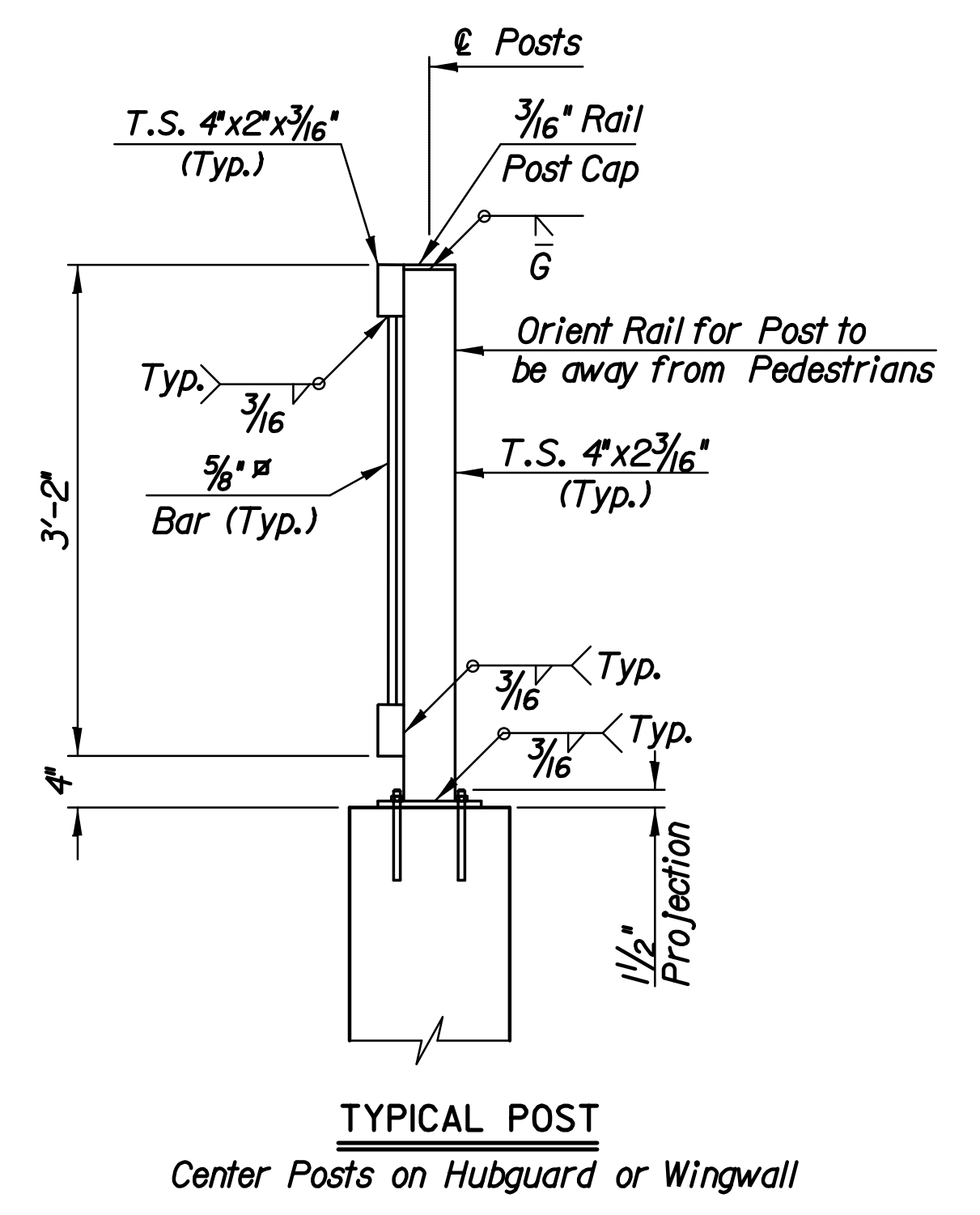
Plotted By: svb Date: 8/4/2013 5:40:17 PM
 FILE: I:\2008\0820\0820\0820\0820\1-8x3 Handrail Details.dgn



TYPICAL RAIL ELEVATION AT HUBGUARD
 (1 Required each end)



TYPICAL RAIL ELEVATION AT WING
 (2 Required each end)

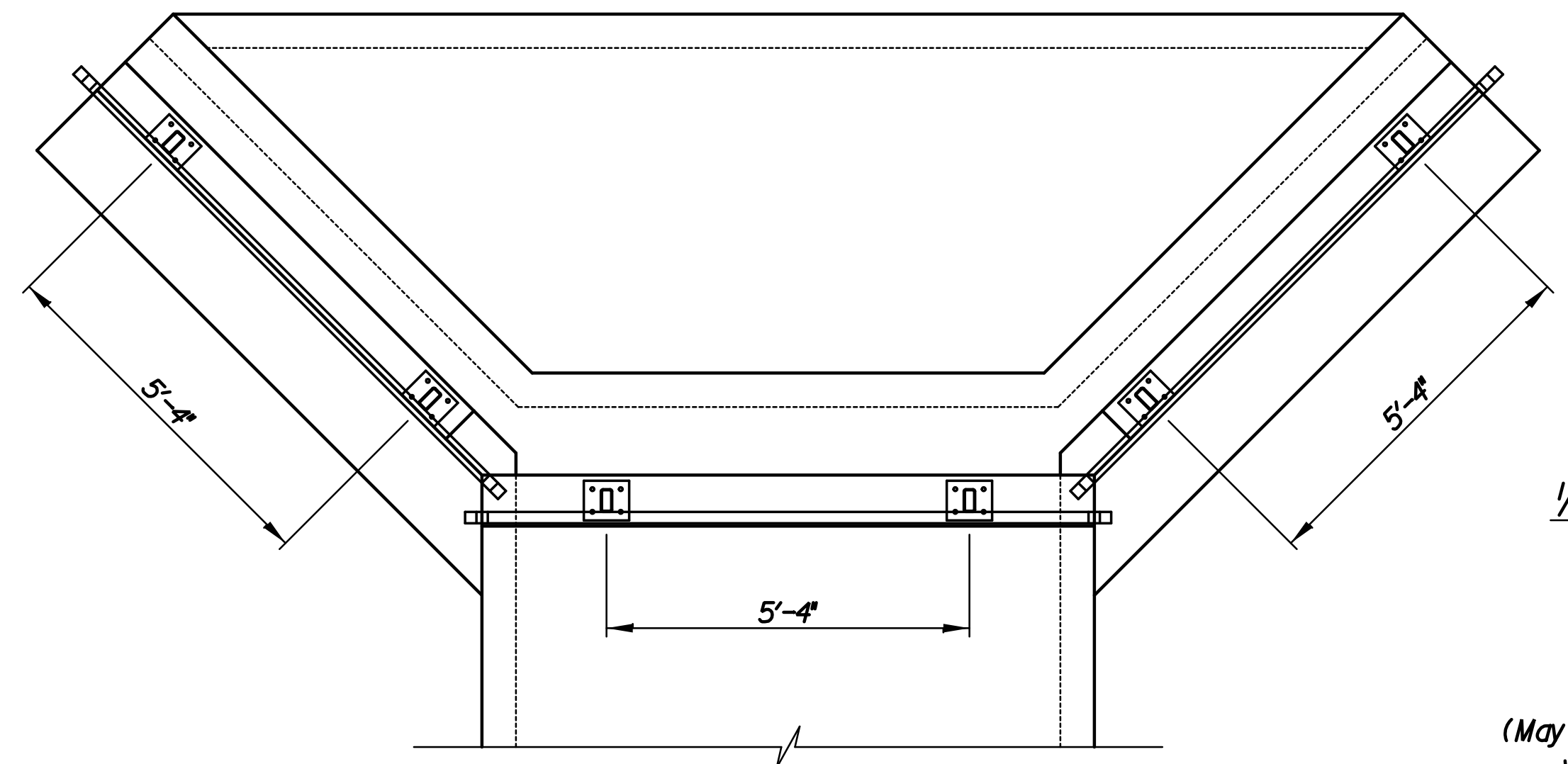


TYPICAL POST
 Center Posts on Hubguard or Wingwall

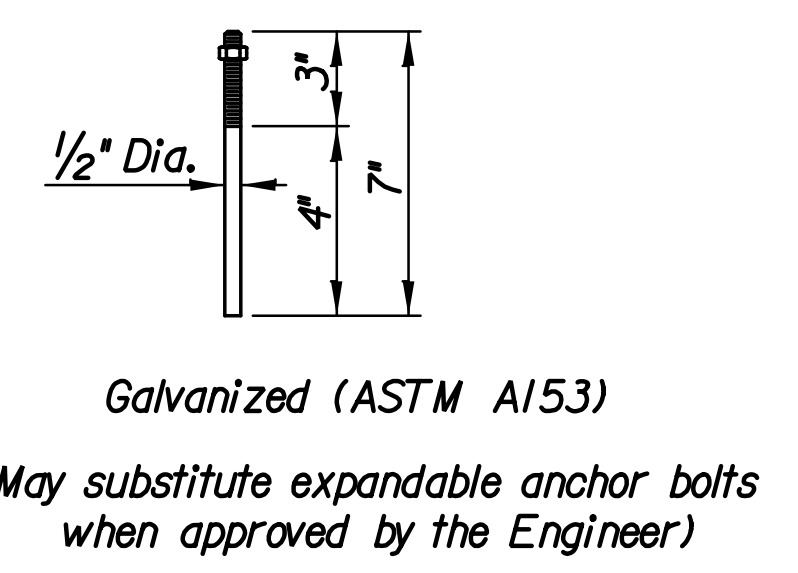
BILL OF MATERIALS	
Handrail (Steel) (Pedestrian)	52.33 L.F.

GENERAL NOTES

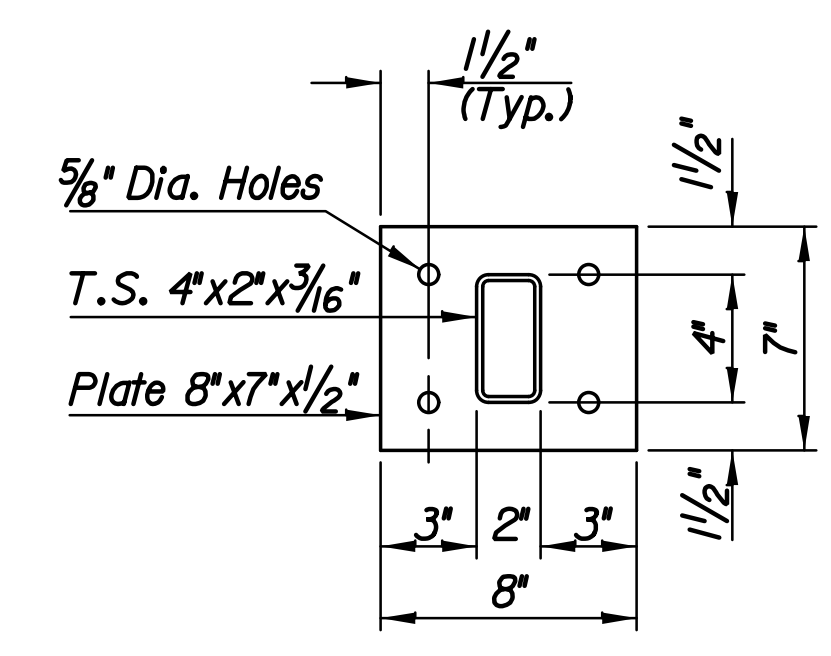
The horizontal members of the Rail and Posts shall be hollow structural tubing. All structural steel tubing shall comply to A.S.T.M. designation A36 or A500 Grade B respectively. Rail shall be fabricated in lengths as shown from joint to joint and joint to end. Post and Bars shall be set vertical and shimmed if required. Prior to painting abrasive blast to commercial finish SSPC-SP6 to obtain a surface profile of 1-1/2 Mills. The shop and field coats applied to structural steel shall conform to an inorganic Zinc Primer with water-borne Acrylic finish coat. (The finish coat shall match Carbolite #C900, Ebony Black). Provide a color sample to the Engineer with shop drawing submittal. Material and construction shall conform to the structural welding code A.W.S. D1.1-01. Shop details must be submitted and approved by the Engineer.



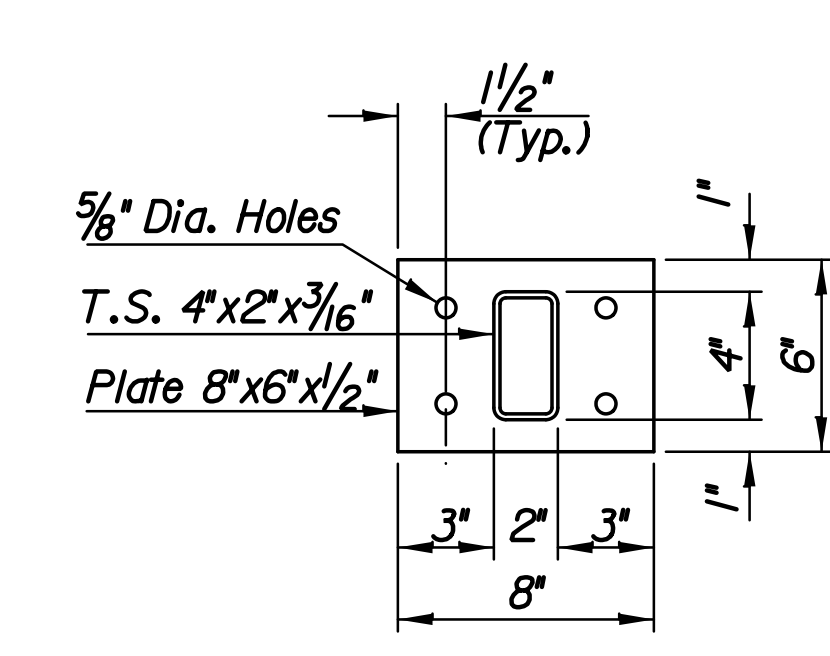
HANDRAIL LAYOUT
 (Typical each end)



ANCHOR BOLT



TYPE A BASE PLATE
 (4 Required)



TYPE B BASE PLATE
 (8 Required)

No.	Revision	By	Date
37TH STREET NORTH			
SINGLE 8'X3' RCB HANDRAIL DETAILS			
GARY JANZEN, P.E.-CITY ENGINEER CITY OF WICHITA PROJECT NO. 472-84692			
PEC PROFESSIONAL ENGINEERING CONSULTANTS, P.A. 303 SOUTH TOPEKA WICHITA, KS 67202 316-262-2691 www.pec1.com			
Designed by	MLB	Job No.	08207
Drawn by	CP	Date	August, 2013