

**GENERAL NOTES**

Existing utilities and their locations, as shown on the plans, represent the best information obtainable for design. Location information has been obtained from record drawings or company provided field locations. The plan locations shown are not guaranteed. Additional existing utilities may also be encountered. The Contractor will be required to work around existing utilities within the right-of-way which do not conflict with proposed construction.

The Contractor shall notify Westar Energy to coordinate enclosure service connection, meter installation, and all other activities to complete the traffic signal installation. Fees associated with this work shall be the responsibility of the Contractor.

Existing traffic equipment salvaged and not reused shall be delivered to the City Yard at 1801 McLean Blvd.

Traffic signal equipment damaged during removal and re-installation procedures shall be replaced at the Contractor's expense.

The Contractor shall furnish and install all equipment and materials necessary for complete operation of each Traffic Signal system whether specifically mentioned or not.

The Contractor shall coordinate with the BNSF for the installation and operation of the traffic signal system.

FUNCTION	PHASE							
	1	2	3	4	5	6	7	8
VEHICLE RECALL				X				X
PED RECALL				X				X
RED LOCK								
YELLOW LOCK								
PERMIT	X	X	X	X	X	X	X	X
PED PHASES	X	X	X	X	X	X	X	X
LEAD PHASES								
DOUBLE ENTRY								
SEQUENTIAL TIMING								
START-UP YELLOW		X						X
OVERLAP A								
OVERLAP B								
OVERLAP C								
OVERLAP D								
EXCLUSIVE								
SIMULTANEOUS GAP								

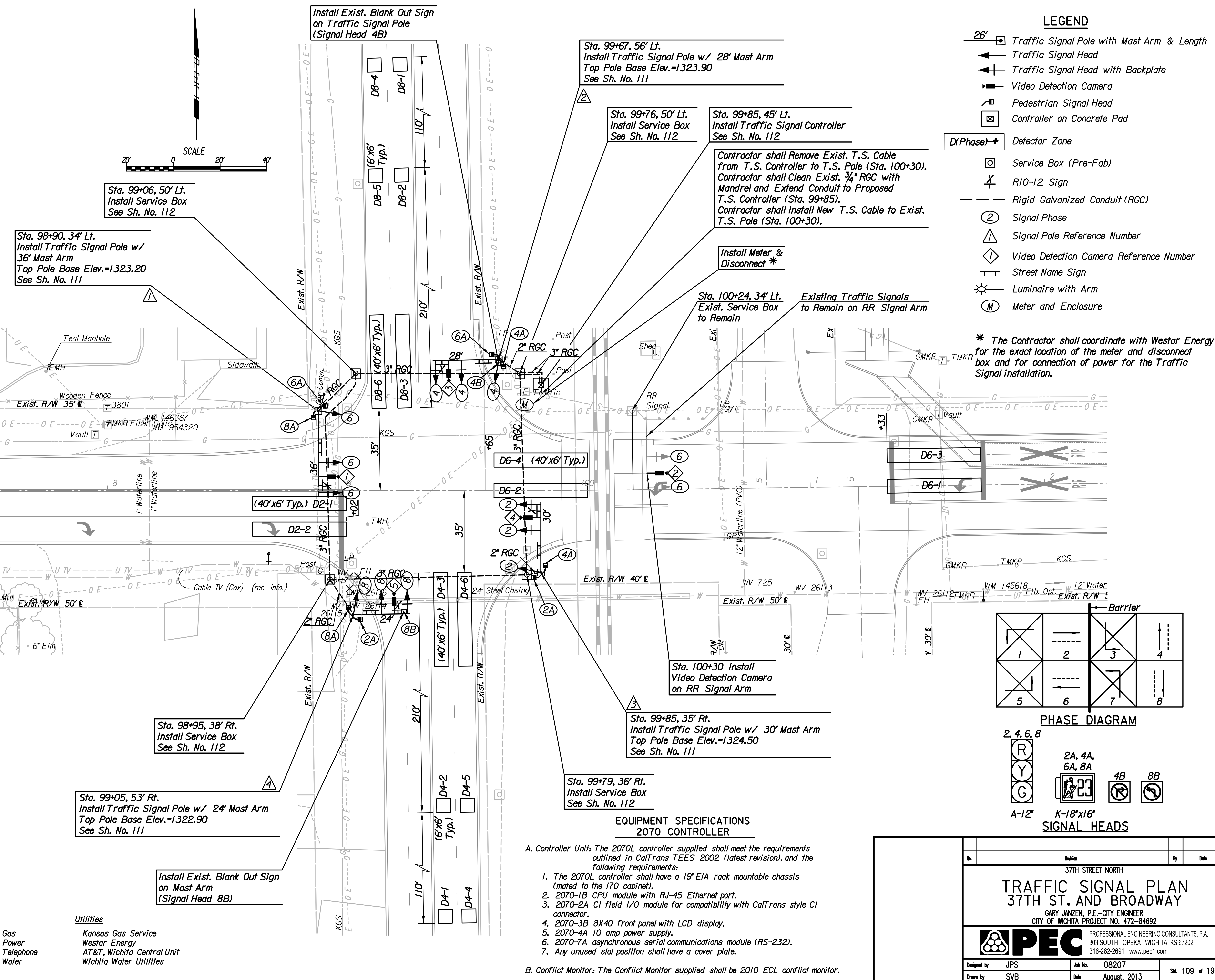
Function Table reflects initial operation.

FUNCTION	PHASE							
	1	2	3	4	5	6	7	8
MAX. I	45	60	60	60	60	60	60	60
MAX. II/HFDW	45	60	60	60	60	60	60	60
WALK	8	8	8	8	8	8	8	8
FLASH DW	20	15	20	15	20	15	20	15
MAX. INITIAL	10	10	10	10	10	10	10	10
MIN. GREEN	7	15	7	15	7	15	7	15
T B R	15	15	15	15	15	15	15	15
T T R	25	25	25	25	25	25	25	25
OBSERVE GAP	-	-	-	-	-	-	-	-
PASSAGE	3.0	3.0	5.0	5.0	3.0	3.0	3.0	3.0
MIN. GAP	1.0	1.0	2.0	1.0	1.0	1.0	1.0	1.0
ADDED ACTUATION	-	-	-	-	-	-	-	-
YELLOW	4.0	4.0	3.5	4.0	4.0	3.5	4.0	4.0
RED CLEAR	1.0	1.0	1.0	1.0	1.0	1.0	1.0	1.0
RED REVERT	-	-	-	-	-	-	-	-
WALK II	-	-	-	-	-	-	-	-

Phase Timing reflects initial operation.

DETECTOR SUMMARY							
CAMERA NO.	DETECTION ZONE	MODE	SIZE (LxW)	PHASE CALLED	PHASE EXTENDED	DELAY/STRETCH TIMER	INITIAL SETTING (SEC.)
1	D6-2	Presence	40x6	6	6	-	-
1	D6-4	Presence	40x6	6	6	-	-
2	D6-1	Presence	40x6	6	6	-	-
2	D6-3	Presence	40x6	6	6	-	-
3	D4-1	Pulse	6x6	4	4	S	I
3	D4-2	Pulse	6x6	4	4	S	I
3	D4-3	Presence	40x6	4	4	-	-
3	D4-4	Pulse	6x6	4	4	S	I
3	D4-5	Pulse	6x6	4	4	S	I
3	D4-6	Presence	40x6	4	4	-	-
4	D2-1	Presence	40x6	2	2	-	-
4	D2-2	Presence	40x6	2	2	-	-
5	D8-1	Pulse	6x6	8	8	S	I
5	D8-2	Pulse	6x6	8	8	S	I
5	D8-3	Presence	40x6	8	8	-	-
5	D8-4	Pulse	6x6	8	8	S	I
5	D8-5	Pulse	6x6	8	8	S	I
5	D8-6	Presence	40x6	8	8	-	-

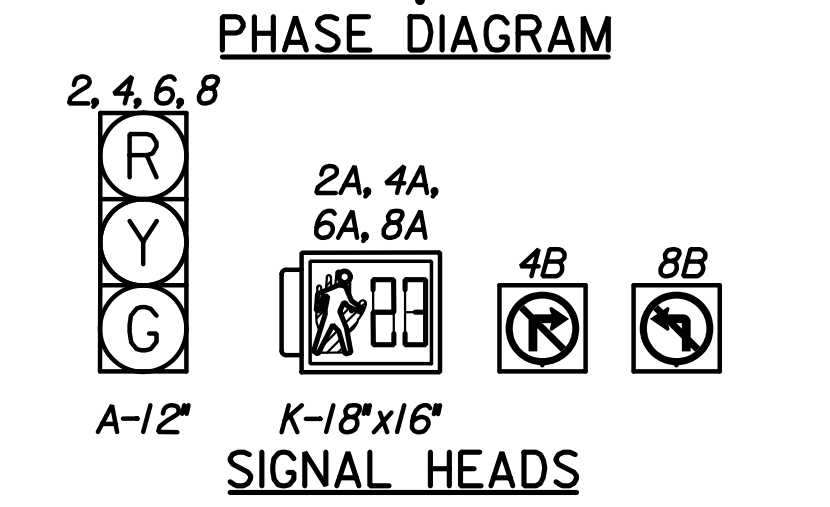
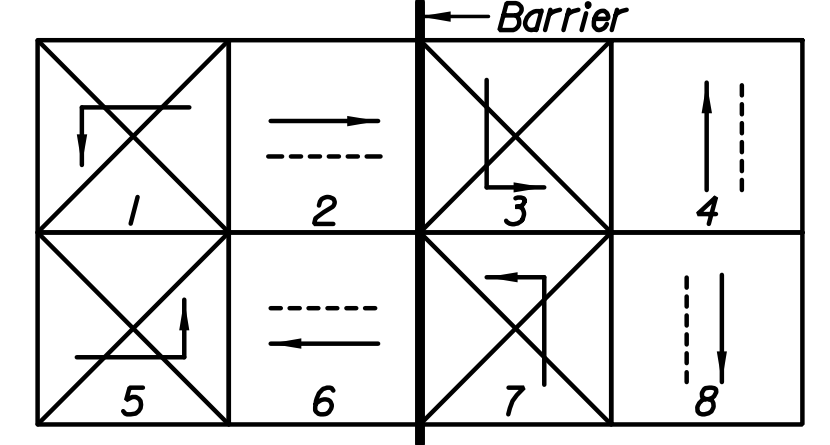
Detector Summary reflects initial operation.



**LEGEND**

- 26' Traffic Signal Pole with Mast Arm & Length
- Traffic Signal Head
- Traffic Signal Head with Backplate
- Video Detection Camera
- Pedestrian Signal Head
- Controller on Concrete Pad
- D(Phase)-# Detector Zone
- Service Box (Pre-Fab)
- R10-12 Sign
- Rigid Galvanized Conduit (RGC)
- Signal Phase
- Signal Pole Reference Number
- Video Detection Camera Reference Number
- Street Name Sign
- Luminaire with Arm
- Meter and Enclosure

\* The Contractor shall coordinate with Westar Energy for the exact location of the meter and disconnect box and for connection of power for the Traffic Signal installation.



**EQUIPMENT SPECIFICATIONS 2070 CONTROLLER**

- A. Controller Unit: The 2070L controller supplied shall meet the requirements outlined in CalTrans TEES 2002 (latest revision), and the following requirements:
- The 2070L controller shall have a 19" EIA rack mountable chassis (mated to the 170 cabinet).
  - 2070-1B CPU module with RJ-45 Ethernet port.
  - 2070-2A CI field I/O module for compatibility with CalTrans style CI connector.
  - 2070-3B 8X40 front panel with LCD display.
  - 2070-4A 10 amp power supply.
  - 2070-7A asynchronous serial communications module (RS-232).
  - Any unused slot position shall have a cover plate.
- B. Conflict Monitor: The Conflict Monitor supplied shall be 2010 ECL conflict monitor.

**Utilities**

- Gas: Kansas Gas Service
- Power: Westar Energy
- Telephone: AT&T, Wichita Central Unit
- Water: Wichita Water Utilities

37TH STREET NORTH

**TRAFFIC SIGNAL PLAN**  
37TH ST. AND BROADWAY

GARY JANZEN, P.E.-CITY ENGINEER  
CITY OF WICHITA PROJECT NO. 472-84692

**PEC** PROFESSIONAL ENGINEERING CONSULTANTS, P.A.  
303 SOUTH TOPEKA WICHITA, KS 67202  
316-262-2691 www.pec1.com

Designed by: JPS Job No.: 08207  
Drawn by: SVB Date: August, 2013

Sheet: 109 of 193

Plotted By: svb Date: 8/16/2013 6:46:59 PM  
FILE: I:\2008\08207\Signals\08207-SignalPlan Broadway.dgn