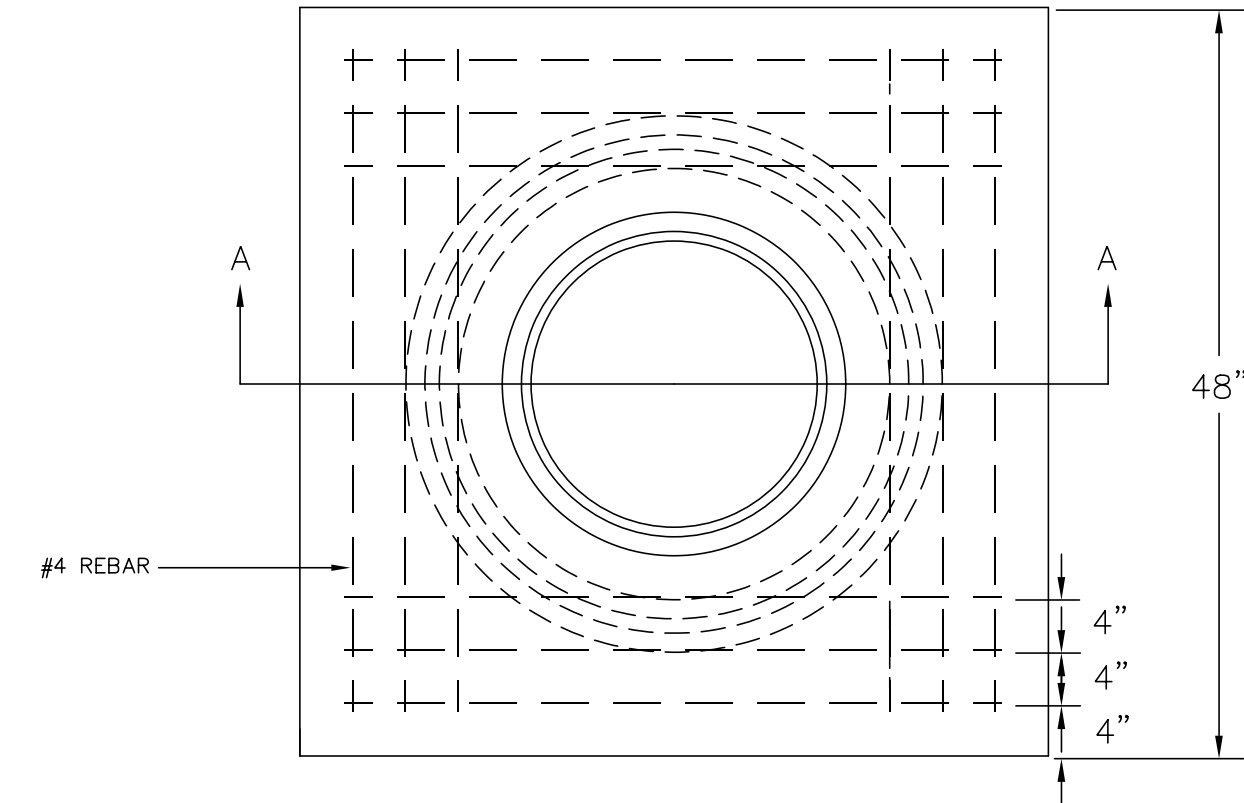
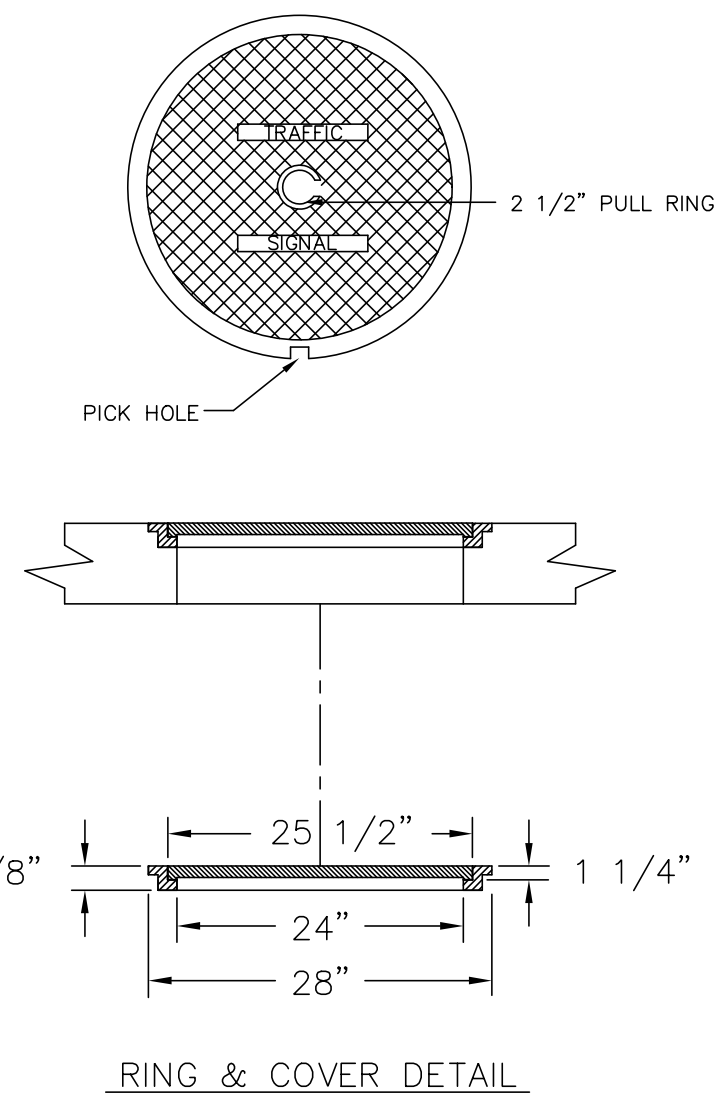
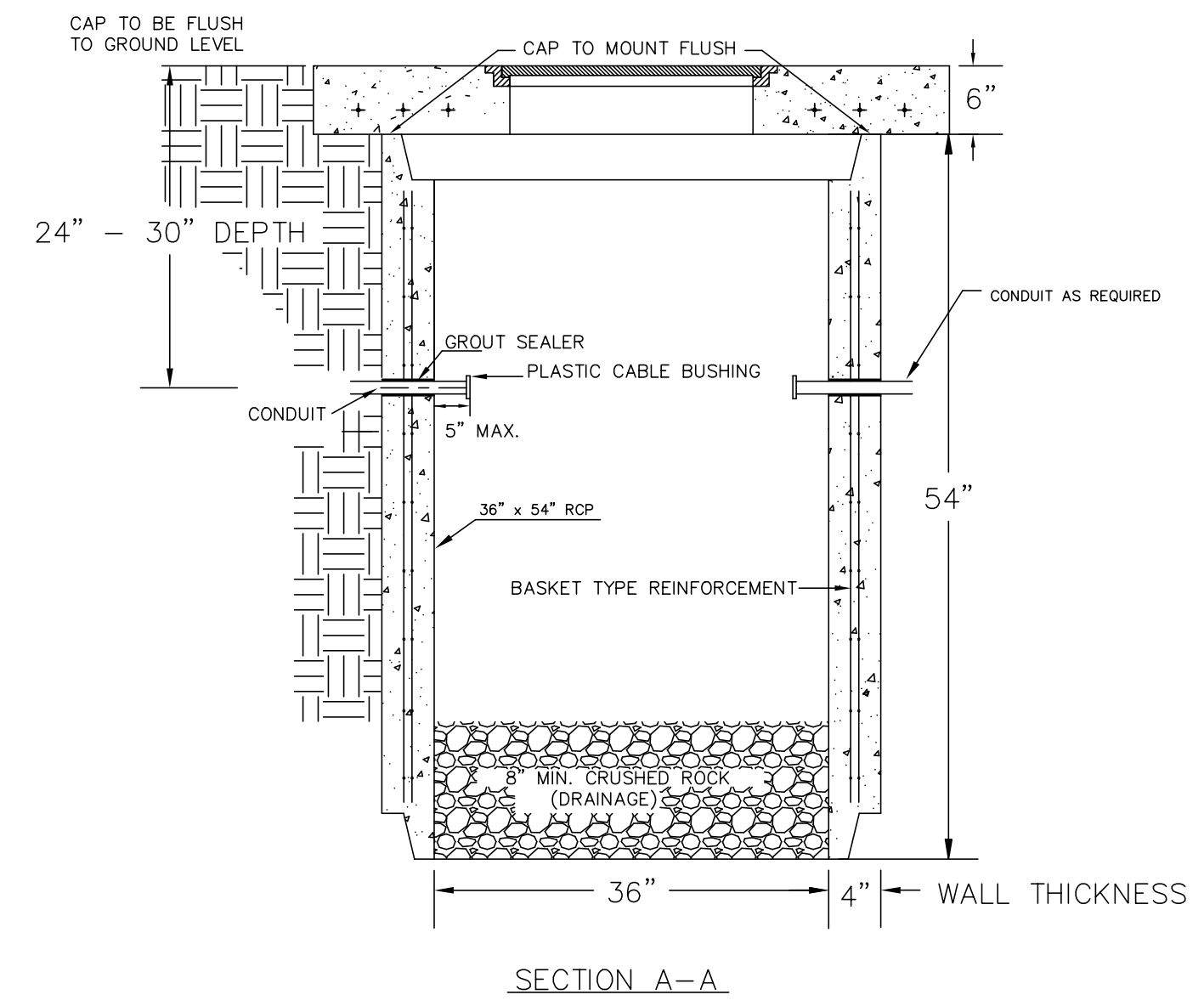


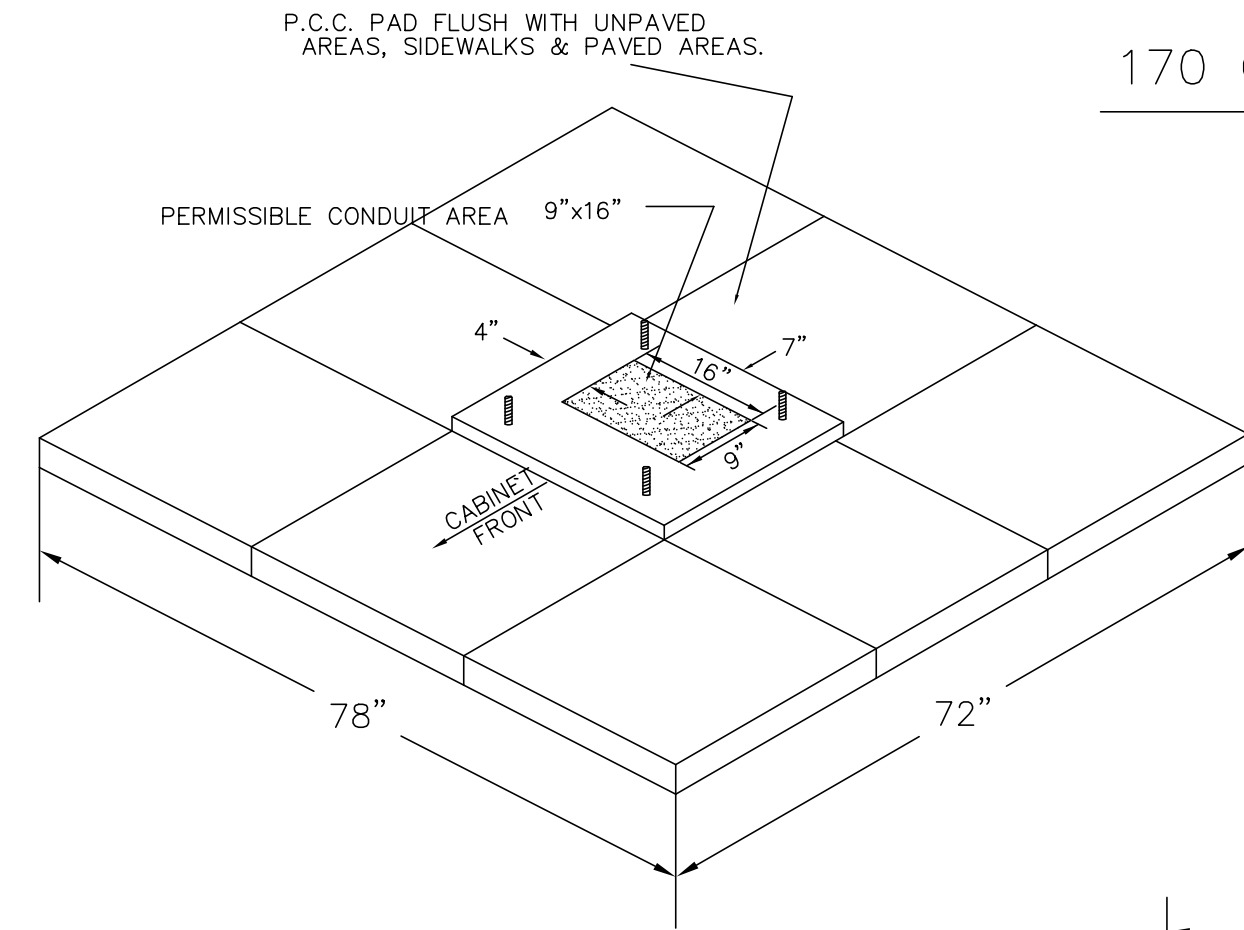
# SERVICE BOX CONSTRUCTION/INSTALLATION DETAILS



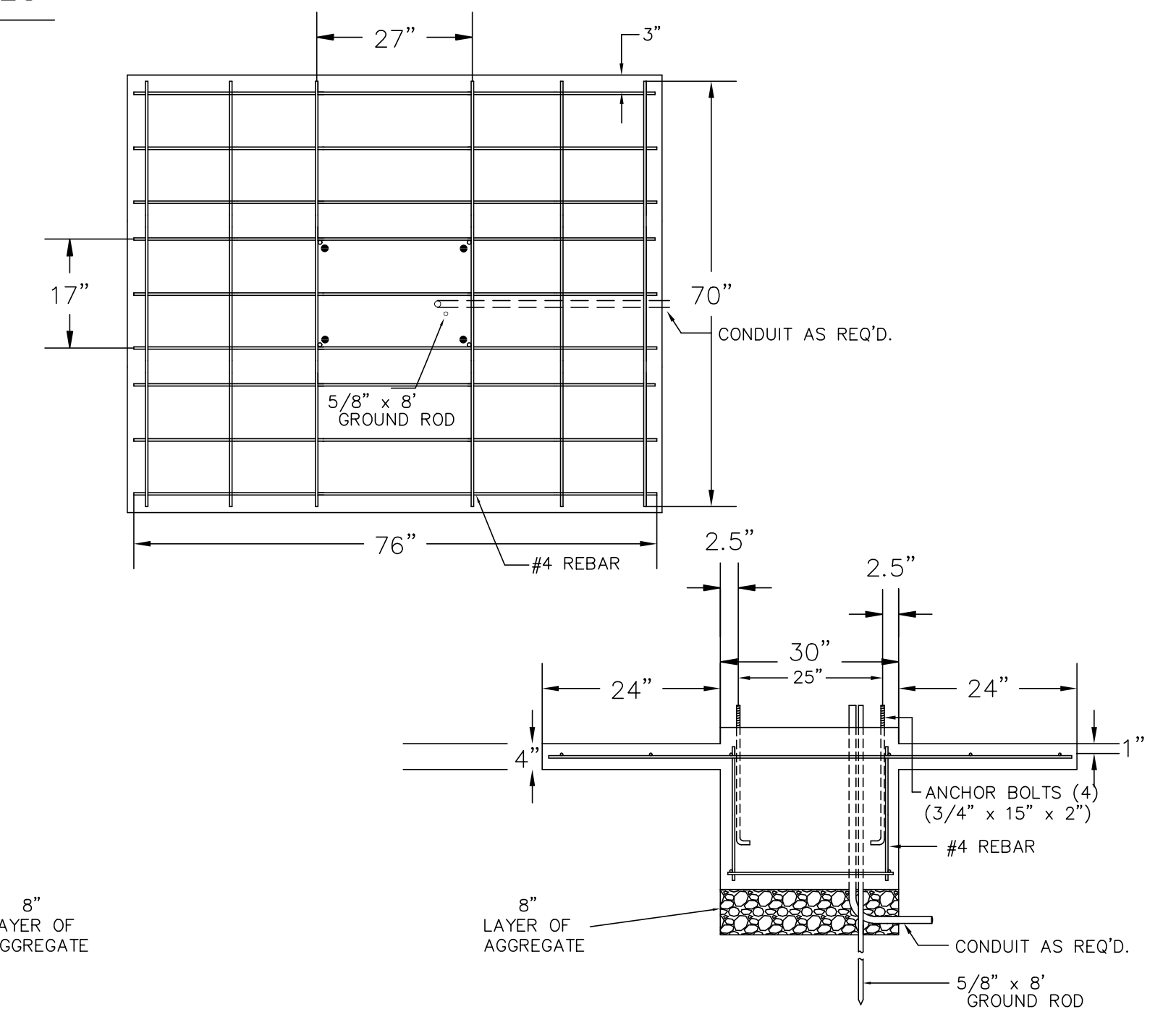
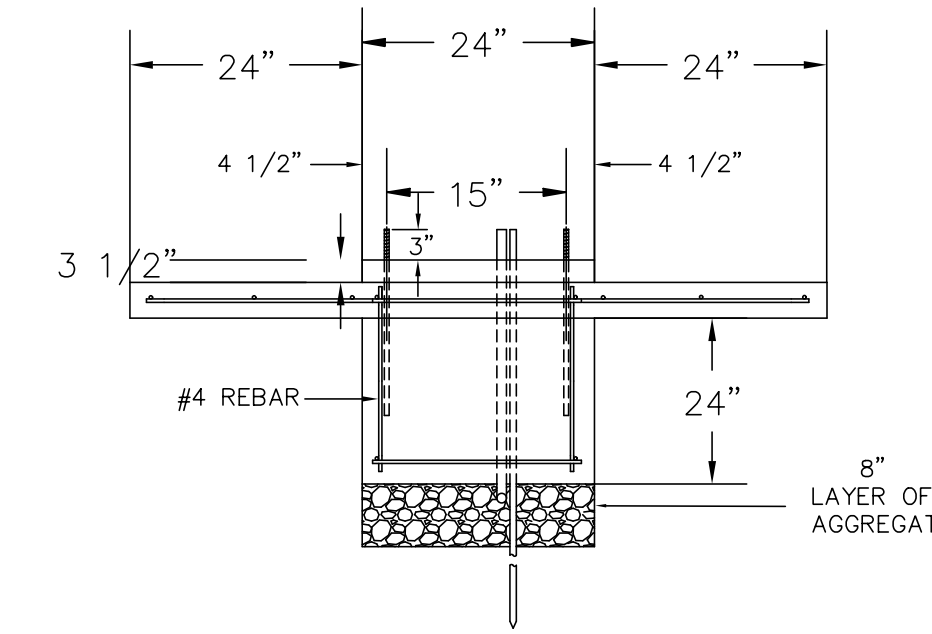
PRE-CAST CONCRETE SERVICE BOX  
(36" I.D. X 54" RCP)  
with 6" CAP



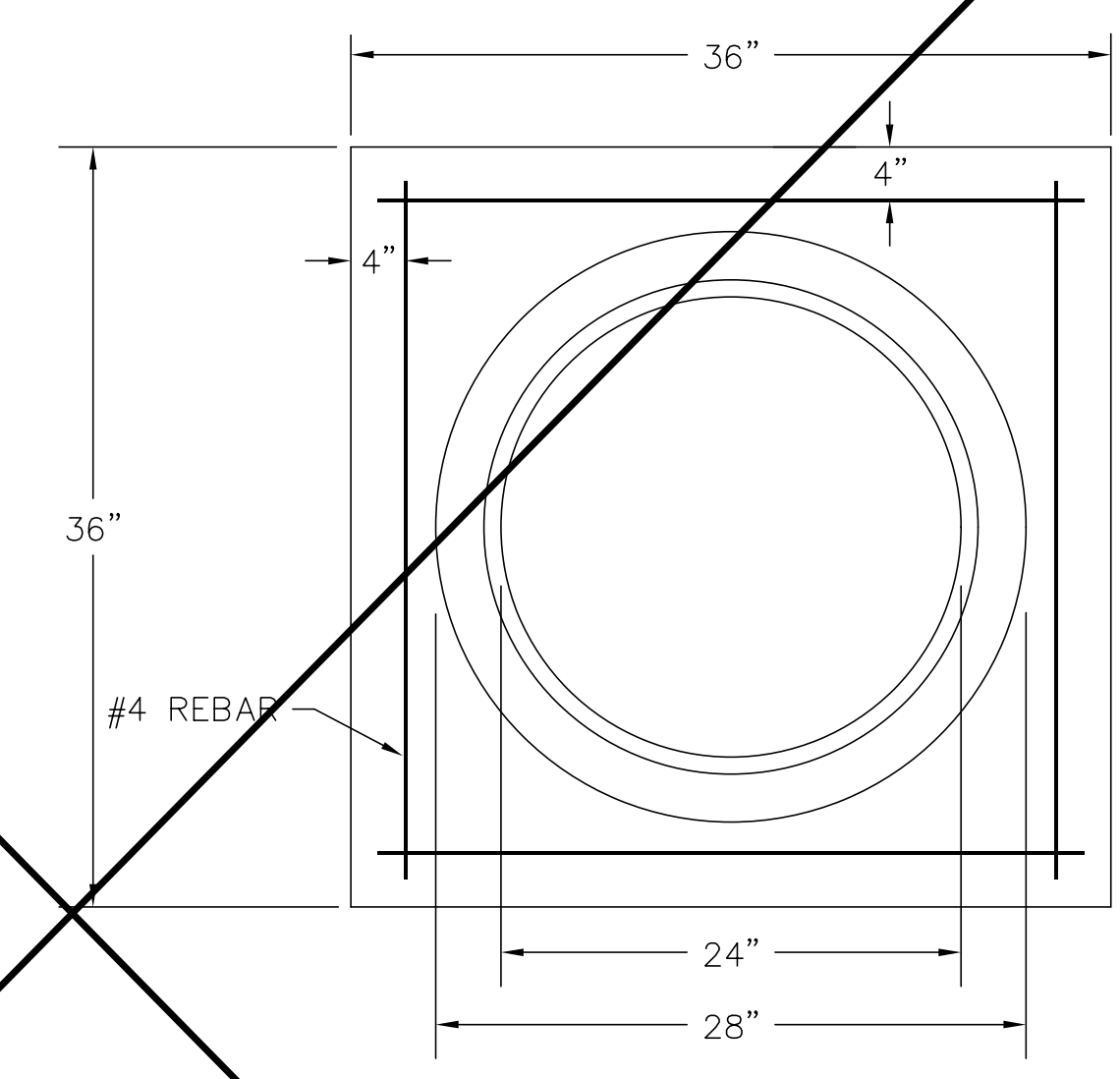
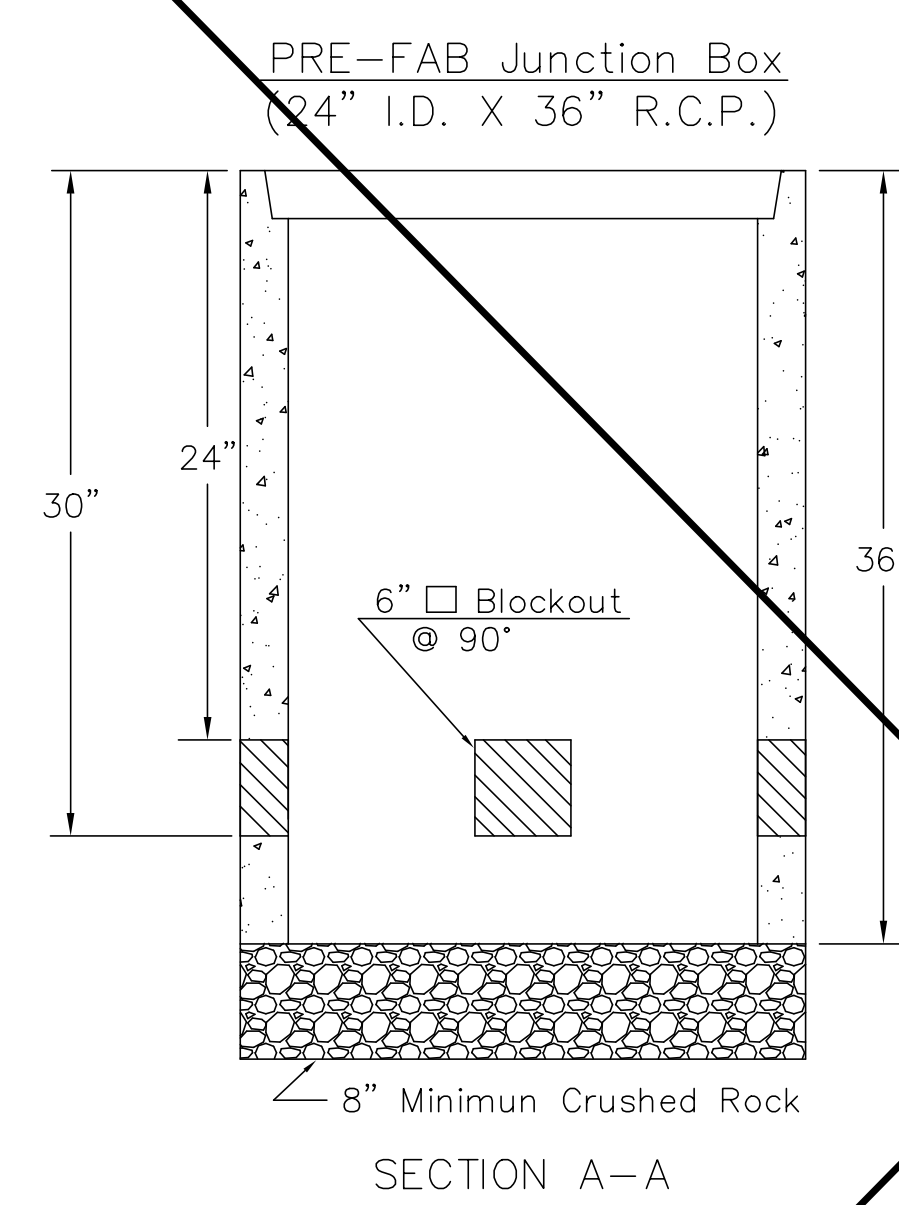
# 170 CONTROLLER PAD DETAILS



REBAR SHALL BE ASTM A615M GRADE 300 MEETING THE REQUIREMENTS OF SUBSECTION SPECIFICATIONS.



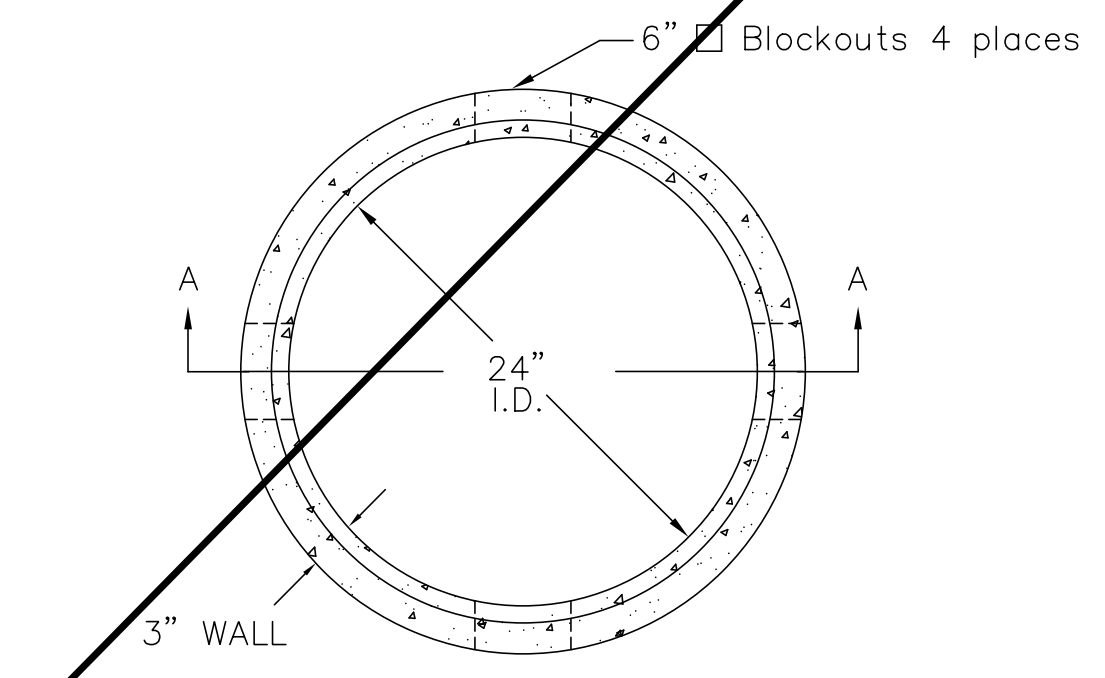
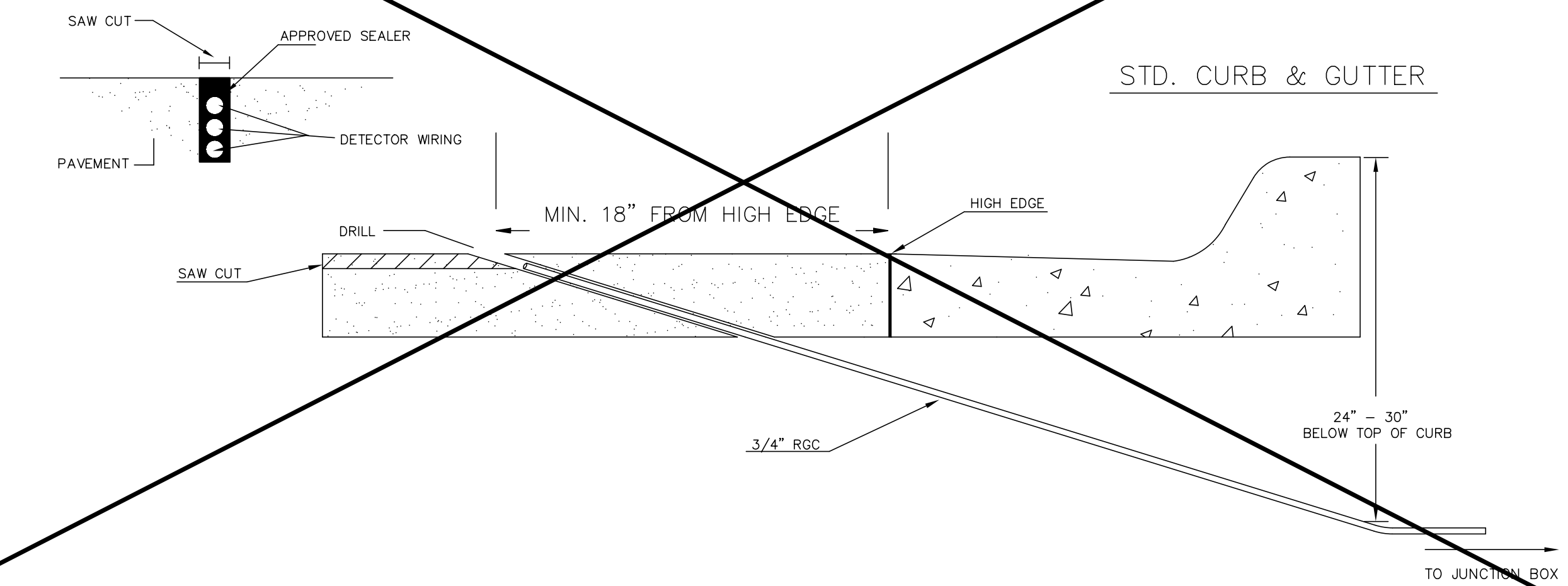
# JUNCTION BOX DETAILS



# NOTES:

- SERVICE & JUNCTION BOX:
- CONDUIT CONNECTION TO BE FLUSH TO WITHIN 5" OF INSIDE FACE OF SIDE WALL, CONDUIT TO DRAIN INTO SERVICE BOX.
  - CONDUIT CONNECTIONS TO SERVICE BOX SHALL BE TERMINATED WITH PLASTIC CABLE BUSHING.
  - CONDUIT SHALL BE SEALED WITH APPROVED SEALER AT INSIDE WALL FACE.
  - ALL SERVICE & JUNCTION BOXES TO HAVE 8" OF CRUSHED ROCK.
- TRENCHING:
- DEPTH TO BE 30" MINIMUM WITH ROCK & STUBBLE FREE BACKFILL TO SERVE AS BEDDING MATERIAL. MAINTAIN MINIMUM CONDUIT DEPTH IN TRENCH.
  - BACKFILL TO BE COMPACTED IN 6" LOOSE LIFTS BY HAND OR MECHANICAL TAMPING TO A 95% STANDARD DENSITY.
- CONDUIT:
- SLOPE CONDUIT TO DRAIN AS DIRECTED BY THE ENGINEER.
  - 3" RIGID STEEL CONDUIT BTWN. SERVICE BOXES.  
2" " " " BTWN. SERVICE BOX AND POLE.  
1 1/4" " " " BTWN. SERVICE & JUNCTION BOXES.  
3/4" " " " BTWN. JUNCTION BOXES.  
3/4" " " " BTWN. JUNCTION BOX & DETECTOR LOOP SAW CUT

# CONDUIT/DETECTOR WIRE INSTALLATION DETAILS



\*\* SEE SERVICE BOX INSTALLATION FOR RING & COVER DETAILS.

Pld\_Scsh. 1.1\_08-19-2013\_10:32:50\_AM\_by\_eyb

<b>SERVICE/JUNCTION BOX, CONTROLLER PAD CONSTRUCTION/INSTALLATION</b>		
TRAFFIC ENGINEER <b>PAUL GUNZELMAN, P.E.</b>		
PROJECT NUMBER 472-84692	OCA NUMBER 706992	DATE 08/2012
CITY ENGINEER'S OFFICE CITY HALL - SEVENTH FLOOR 455 NORTH MAIN STREET WICHITA, KANSAS 67202-1620 (316) 268-4501		SHEET <b>112 of 193</b>