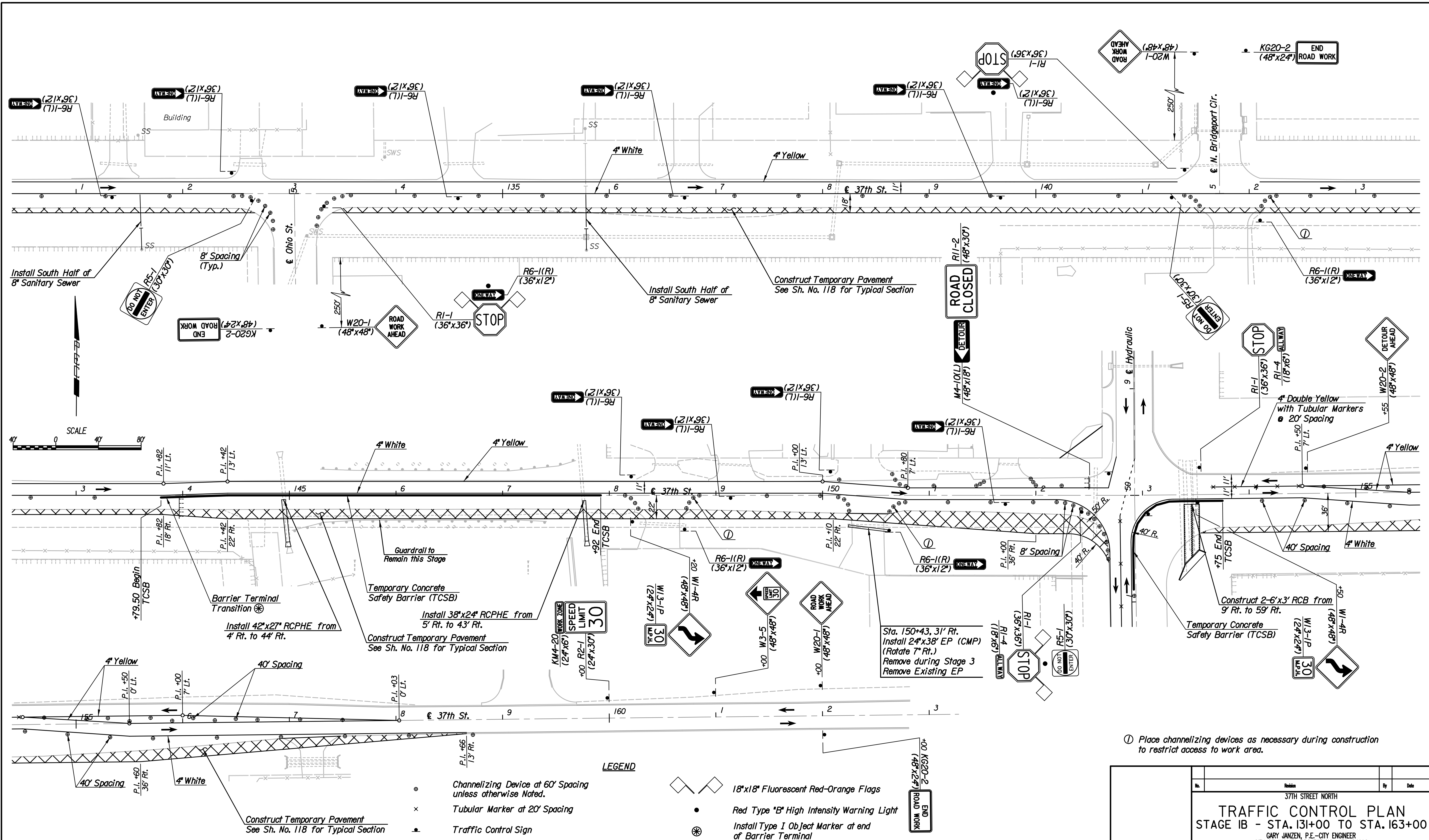


Plotted By: svb Date: 8/5/2013 12:14:43 PM  
 FILE: I:\2008\0820\Traffic Control\08207-TC Stage IB 131.dgn



Note: Utilities are not shown on Traffic Control Plans. The Contractor is responsible for verification as to type and location of underground utilities as may be necessary to avoid damage thereto. The Contractor is responsible for repairing any damage to underground utilities.

- LEGEND**
- ⊙ Channelizing Device at 60' Spacing unless otherwise noted.
  - × Tubular Marker at 20' Spacing
  - ⊠ Traffic Control Sign
  - TTTTT Type III Barricades
  - ◊ 18"x18" Fluorescent Red-Orange Flags
  - Red Type "B" High Intensity Warning Light
  - ⊙ Install Type I Object Marker at end of Barrier Terminal
  - ▨ Temporary Pavement for Detours
  - Direction of Traffic
- Note: Signs and barricades are shown diagrammatically only. Contractor will be responsible to install the required number of posts to support the installation.

① Place channelizing devices as necessary during construction to restrict access to work area.

Revision		By		Date	
37TH STREET NORTH					
<b>TRAFFIC CONTROL PLAN</b>					
STAGE IB - STA. 131+00 TO STA. 163+00					
GARY JANZEN, P.E.-CITY ENGINEER CITY OF WICHITA PROJECT NO. 472-84692					
<b>PEC</b> PROFESSIONAL ENGINEERING CONSULTANTS, P.A. 303 SOUTH TOPEKA WICHITA, KS 67202 316-262-2691 www.pec1.com					
Designed by	JPS	Job No.	08207	Sht. 123 of 193	
Drawn by	SVB	Date	August, 2013		