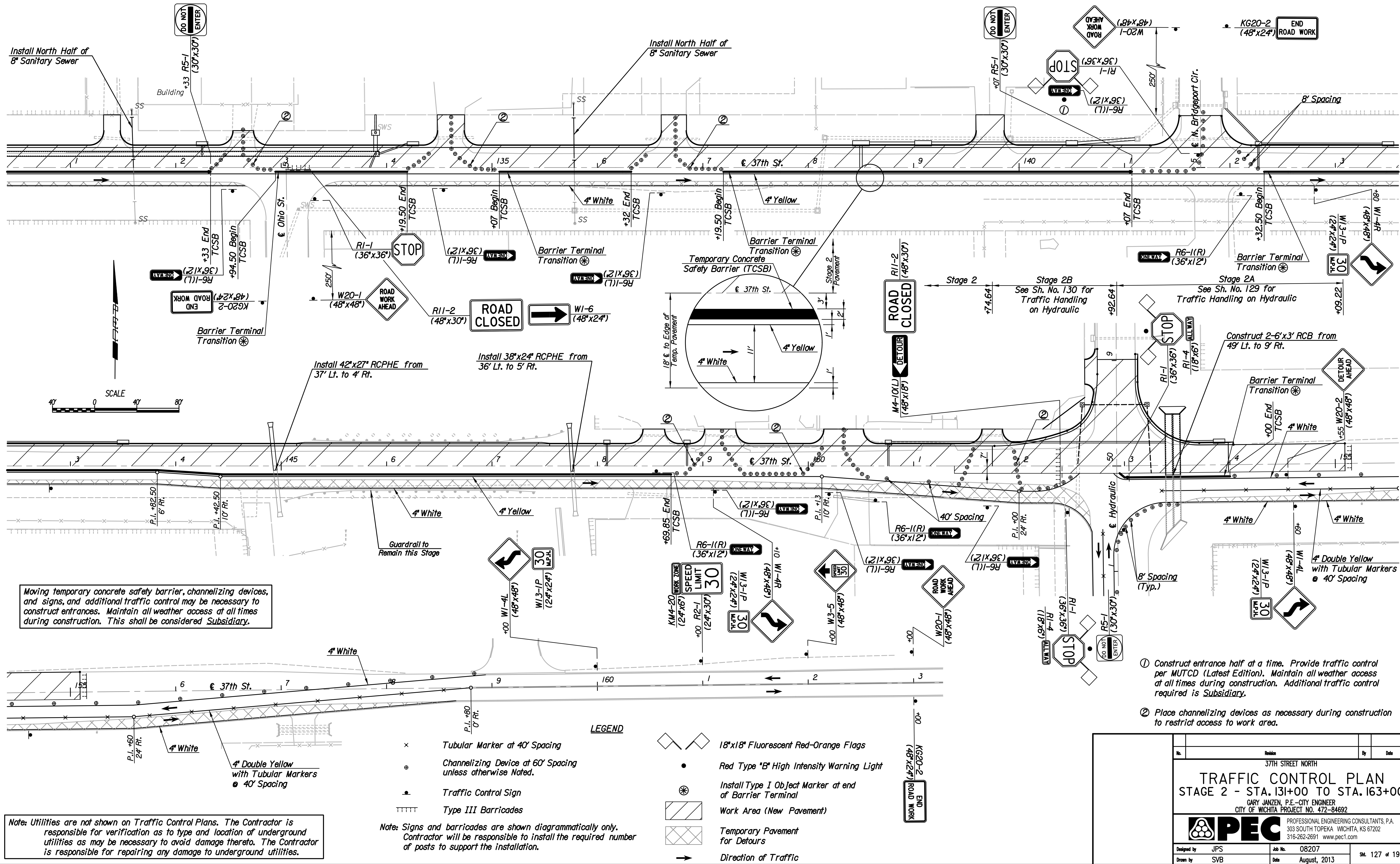


Plotted By: svb Date: 8/18/2013 12:18:12 PM  
 FILE: I:\2008\0820\Traffic Control\0820-TC Stage 2 131.dgn



Moving temporary concrete safety barrier, channelizing devices, and signs, and additional traffic control may be necessary to construct entrances. Maintain all weather access at all times during construction. This shall be considered Subsidiary.

Note: Utilities are not shown on Traffic Control Plans. The Contractor is responsible for verification as to type and location of underground utilities as may be necessary to avoid damage thereto. The Contractor is responsible for repairing any damage to underground utilities.

- LEGEND**
- × Tubular Marker at 40' Spacing
  - ⊙ Channelizing Device at 60' Spacing unless otherwise noted.
  - ▲ Traffic Control Sign
  - TTTTT Type III Barricades
  - 18"x18" Fluorescent Red-Orange Flags
  - Red Type "B" High Intensity Warning Light
  - ⊙ Install Type I Object Marker at end of Barrier Terminal
  - ▨ Work Area (New Pavement)
  - ▨ Temporary Pavement for Detours
  - Direction of Traffic
- Note: Signs and barricades are shown diagrammatically only. Contractor will be responsible to install the required number of posts to support the installation.

- ① Construct entrance half at a time. Provide traffic control per MUTCD (Latest Edition). Maintain all weather access at all times during construction. Additional traffic control required is Subsidiary.
- ② Place channelizing devices as necessary during construction to restrict access to work area.

Revision		By	Date
37TH STREET NORTH			
<b>TRAFFIC CONTROL PLAN</b>			
STAGE 2 - STA. 131+00 TO STA. 163+00			
GARY JANZEN, P.E.-CITY ENGINEER CITY OF WICHITA PROJECT NO. 472-84692			
<b>PEC</b> PROFESSIONAL ENGINEERING CONSULTANTS, P.A. 303 SOUTH TOPEKA WICHITA, KS 67202 316-262-2691 www.pec1.com			
Designed by	JPS	Job No.	08207
Drawn by	SVB	Date	August, 2013
			Sheet 127 of 193