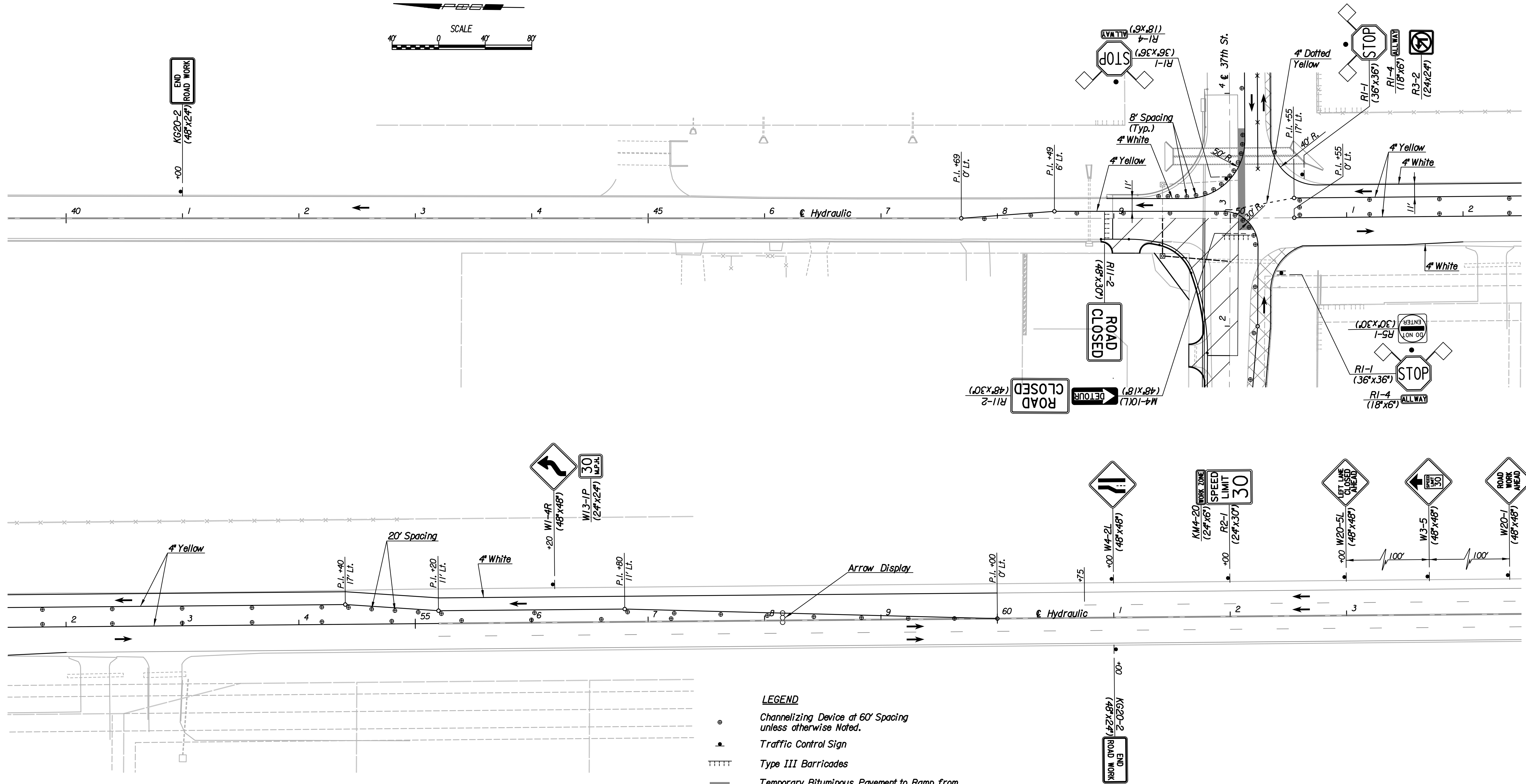
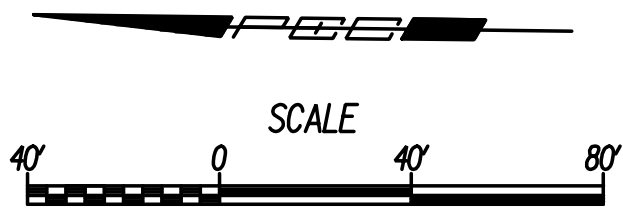


Plotted By: svb Date: 8/18/2013 12:30:44 PM
 FILE: I:\2008\0820\Traffic Control\08207-Stage 2B Hydraulic.dgn



- LEGEND**
- Channelizing Device at 60' Spacing unless otherwise Noted.
 - Traffic Control Sign
 - Type III Barricades
 - Temporary Bituminous Pavement to Ramp from Existing Pavement to New Pavement.
 - Work Area (New Pavement)
 - Temporary Pavement for Detours
 - Direction of Traffic

Note: Utilities are not shown on Traffic Control Plans. The Contractor is responsible for verification as to type and location of underground utilities as may be necessary to avoid damage thereto. The Contractor is responsible for repairing any damage to underground utilities.

Note: Signs and barricades are shown diagrammatically only. Contractor will be responsible to install the required number of posts to support the installation.

Revision		By	Date
37TH STREET NORTH			
TRAFFIC CONTROL PLAN			
STAGE 2B - HYDRAULIC			
GARY JANZEN, P.E.-CITY ENGINEER CITY OF WICHITA PROJECT NO. 472-84692			
		PROFESSIONAL ENGINEERING CONSULTANTS, P.A. 303 SOUTH TOPEKA WICHITA, KS 67202 316-262-2691 www.pec1.com	
Designed by	JPS	Job No.	08207
Drawn by	SVB	Date	August, 2013
			Sht. 130 of 193