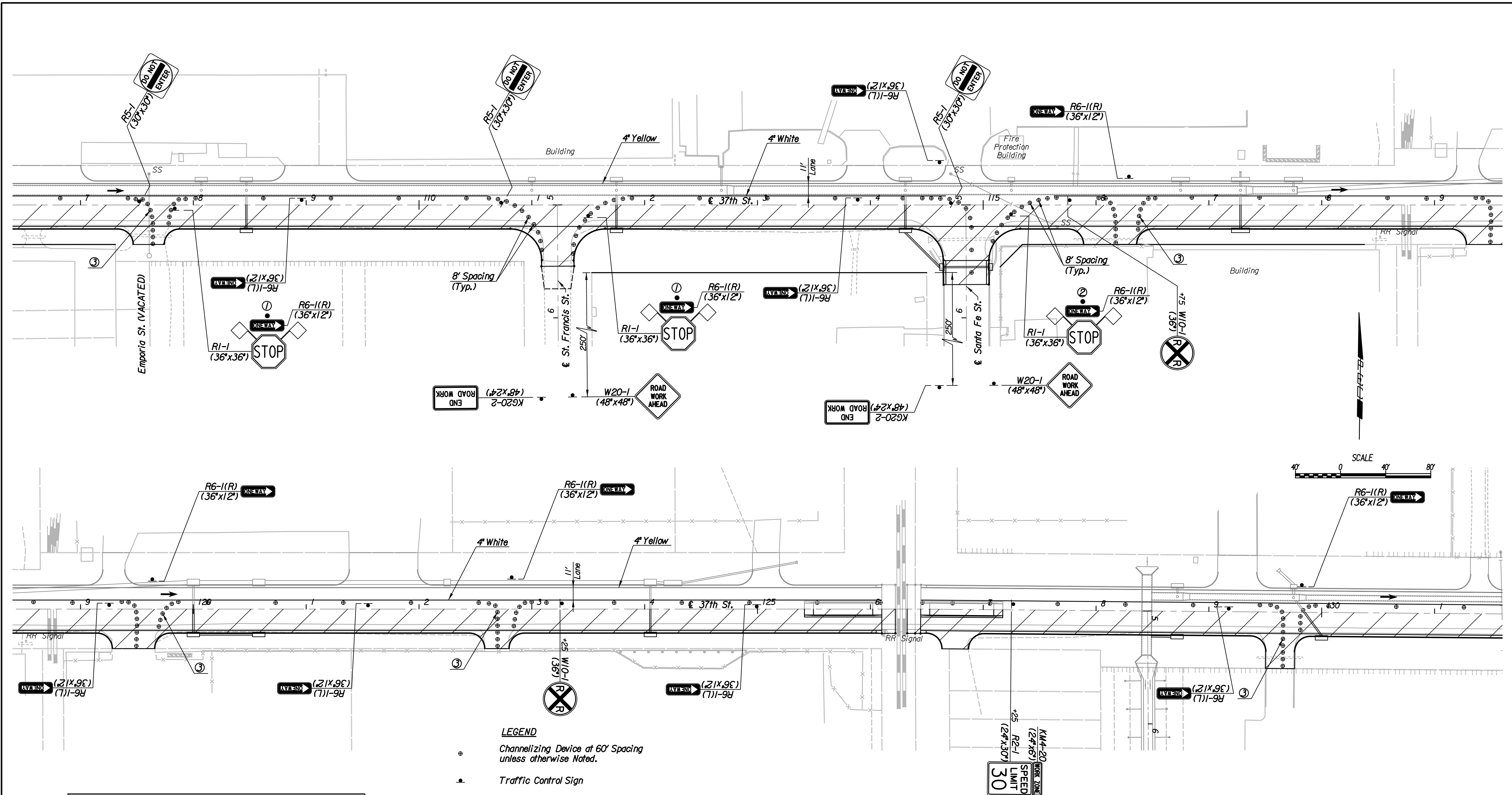


Plotted By: svb Date: 8/5/2013 2:34:16 PM
 FILE: I:\2008\0820\Traffic Control\08207-TC Stage 3 107.dgn



Moving channelizing devices and signs, and additional traffic control may be necessary to construct entrances. Maintain all weather access at all times during construction. This shall be considered Subsidiary.

Note: Utilities are not shown on Traffic Control Plans. The Contractor is responsible for verification as to type and location of underground utilities as may be necessary to avoid damage thereto. The Contractor is responsible for repairing any damage to underground utilities.

- LEGEND**
- Channelizing Device at 60' Spacing unless otherwise Noted.
 - Traffic Control Sign
 - TTTTT Type III Barricades
 - ◇◇◇◇ 18"x18" Fluorescent Red-Orange Flags
 - Red Type "B" High Intensity Warning Light
 - ▨ Work Area (New Pavement)
 - Direction of Traffic

Note: Signs and barricades are shown diagrammatically only. Contractor will be responsible to install the required number of posts to support the installation.

- ① Old Lawrence Rd. (S), Topeka St., and St. Francis St. are to be closed only one at a time. Contractor to provide all weather access at all times to these streets while they are open. Intersection work to be completed and opened to traffic as soon as possible. Provide traffic control per MUTCD (Latest Edition). Additional traffic control required is Subsidiary.
- ② Construct entrance half at a time. Provide traffic control per MUTCD (Latest Edition). Maintain all weather access at all times during construction. Additional traffic control required is Subsidiary.
- ③ Place channelizing devices as necessary during construction to restrict access to work area.

No.	Revision	By	Date
37TH STREET NORTH			
TRAFFIC CONTROL PLAN			
STAGE 3 - STA. 107+00 TO STA. 131+00			
GARY JANZEN, P.E.-CITY ENGINEER CITY OF WICHITA PROJECT NO. 472-84692			
PEC PROFESSIONAL ENGINEERING CONSULTANTS, P.A. 303 SOUTH TOPEKA WICHITA, KS 67202 316-262-2691 www.pec1.com			
Designed by	JPS	Job No.	08207
Drawn by	SVB	Date	August, 2013

Sht. 132 of 193