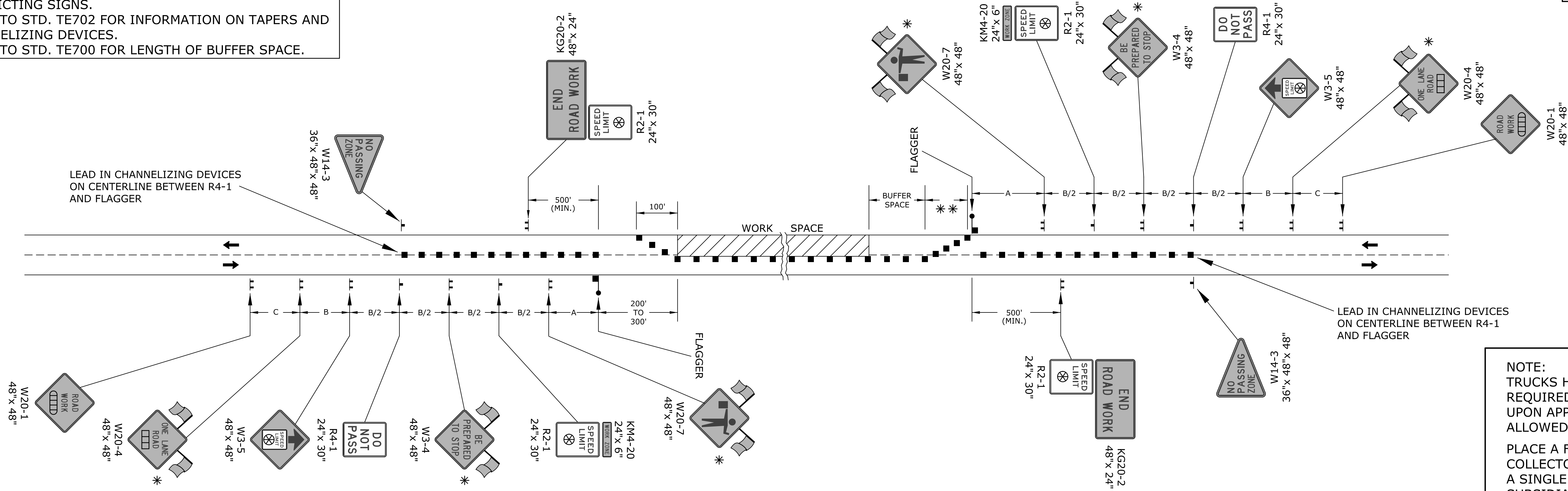


STATE	PROJECT NO.	YEAR	SHEET NO.	TOTAL SHEETS
KANSAS	472-84692	2013	143	193

REFER TO STD. TE710 FOR ADDITIONAL INFORMATION ON TEMPORARY TRAFFIC CONTROL SIGNS, SIGN SPACING AND CONFLICTING SIGNS.
REFER TO STD. TE702 FOR INFORMATION ON TAPERS AND CHANNELIZING DEVICES.
REFER TO STD. TE700 FOR LENGTH OF BUFFER SPACE.

FLAGGER



NOTE:
TRUCKS HAULING MATERIAL TO THE PROJECT ARE REQUIRED TO STOP AT FLAGGER. AFTER STOPPING, UPON APPROVAL OF ENGINEER, TRUCKS MAY BE ALLOWED TO MOVE AROUND FLAGGER.

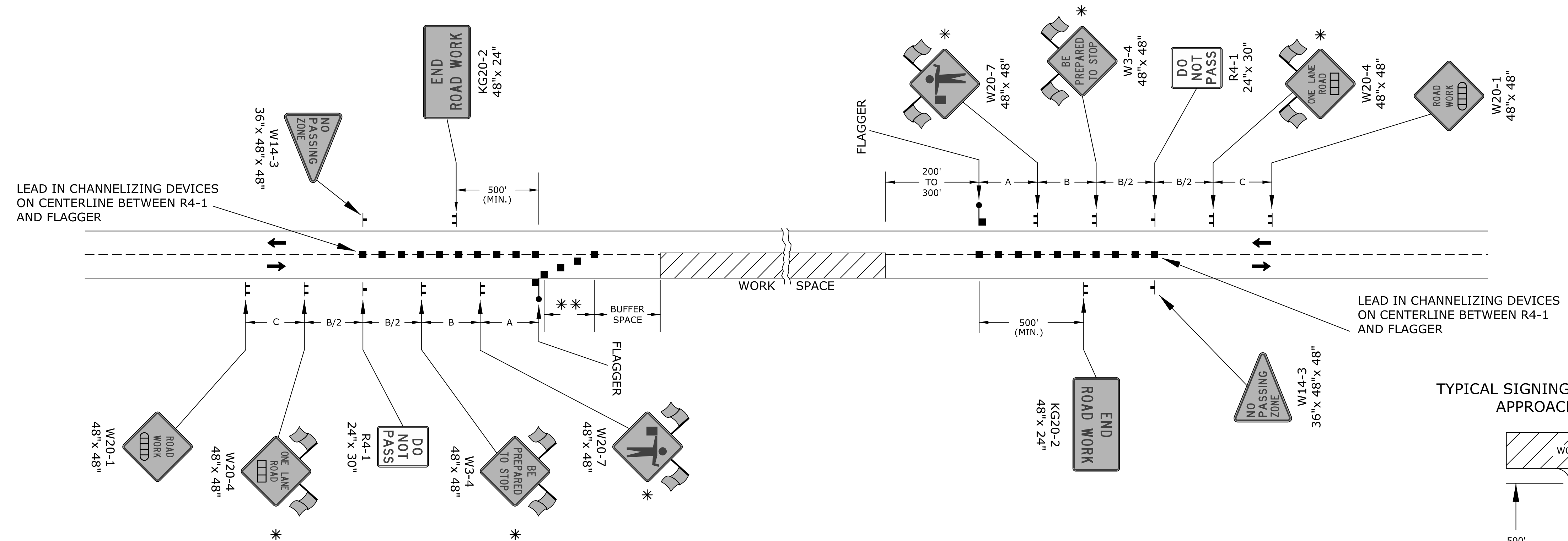
PLACE A FLAGGER AT ALL HIGHWAY AND MAJOR COLLECTOR INTERSECTIONS IN THE WORK SPACE. A SINGLE FLAGGER AT EACH INTERSECTION IS SUBSIDIARY TO OTHER ITEMS. THE NEED FOR A FLAGGER AT A MINOR SIDE ROAD INTERSECTION SHALL BE DETERMINED BY THE ENGINEER. IF REQUESTED BY THE ENGINEER, EACH ADDITIONAL FLAGGER WILL BE MEASURED AND PAID FOR EACH HOUR THEY ARE REQUIRED. PLACE A W20-7 (FLAGGER SYMBOL) SIGN ON EACH SIDE ROAD APPROACH THAT IS CONTROLLED BY A FLAGGER.

EXISTING SIGNS SHALL NOT BE COVERED OR REMOVED BETWEEN FLAGGER STATIONS.

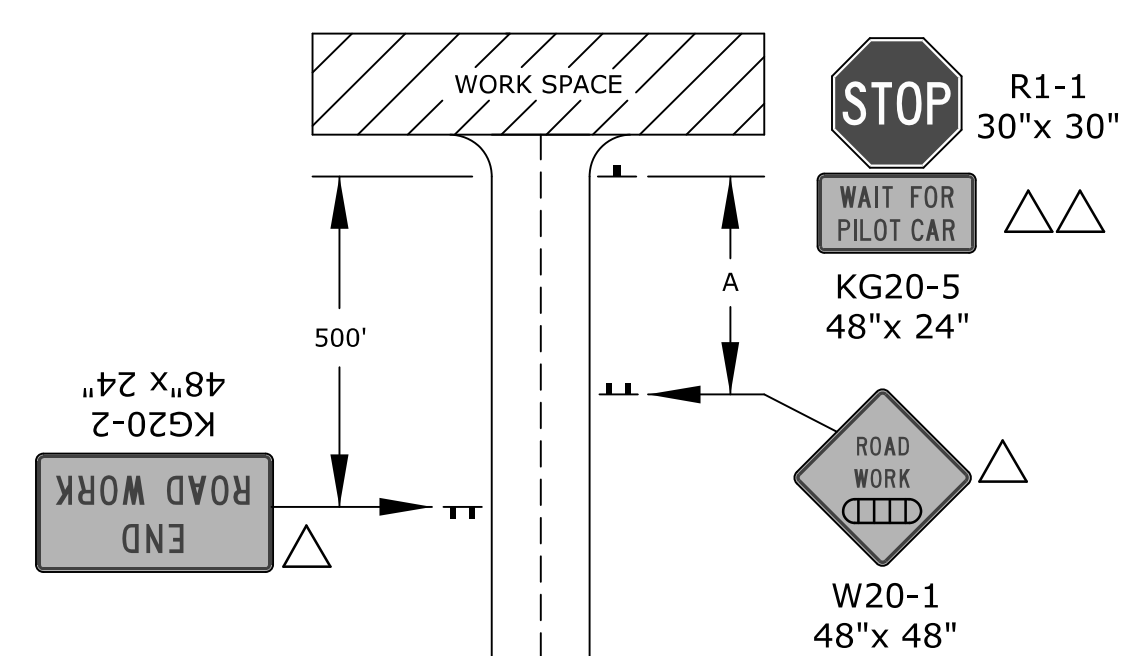
* WHEN APPLICABLE, USE TYPE "A" LOW INTENSITY WARNING LIGHTS FOR NIGHTTIME OPERATIONS ONLY OR AS DIRECTED BY ENGINEER.

** THERE SHOULD BE A MINIMUM OF SIX (6) CHANNELIZERS SPACED AT 20' INTERVALS.

FLAGGER AND PILOT CAR



TYPICAL SIGNING FOR A MINOR SIDE ROAD APPROACH TO WORK SPACE



- CHANNELIZING DEVICE
- ▭ AHEAD, 1500 FT, OR 1 MILE
- ▭ AHEAD, 1000 FT, 1500 FT, OR 1/2 MILE
- ⊗ SPEED TO BE DETERMINED BY THE ENGINEER
- TYPE "A" LOW INTENSITY WARNING LIGHT

- △ NOT REQUIRED ON SUBSTANTIAL MAINTENANCE PROJECTS (1R)
- △△ THE KG20-5 (WAIT FOR PILOT CAR) SIGN SHALL BE MOUNTED ON AN APPROVED PORTABLE SUPPORT AND NOT ATTACHED TO THE EXISTING STOP SIGN POST.

THE KG20-5 SIGN SHALL BE PLACED IMMEDIATELY IN FRONT OF THE EXISTING STOP SIGN, A MINIMUM OF 6" BELOW THE BOTTOM OF THE STOP SIGN. THE SIGN SHOULD BE REMOVED OR COVERED WHEN THERE IS NO PILOT CAR.

NO.	DATE	REVISIONS	BY	APP'D
3	10/16/12	Modified Lead in Channelizer Note	J.A.M.	K.F.
2	10/4/11	Removed Conflicting Signs Note	J.A.M.	K.F.
1	4/20/09	Changed Location of Centerline Delineation	J.A.M.	A.A.A.

KANSAS DEPARTMENT OF TRANSPORTATION
TYPICAL TRAFFIC CONTROL FLAGGER OR PILOT CAR
TWO-LANE ONE LANE CLOSED
EXCLUDING CONCRETE SHOULDERS
EQUAL TO OR GREATER THAN 8 FT

TE730		10/16/12		APP'D	Kristina Pyle
DESIGNED	B.A.H.	DETAILED	B.A.H.	QUANTITIES	TRACED
DESIGN CK.	DETAIL CK.	QUAN. CK.	TRACE CK.		