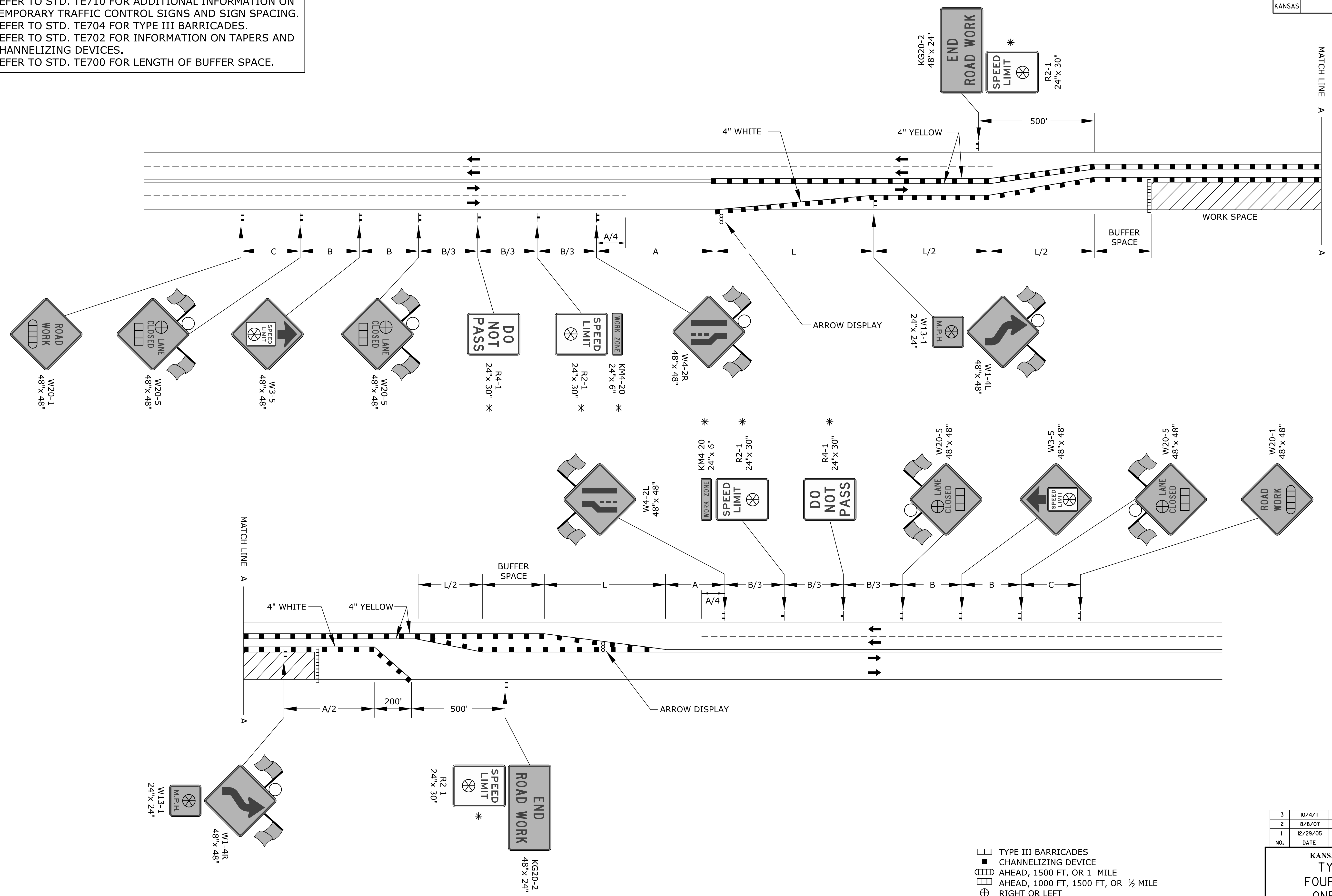


STATE	PROJECT NO.	YEAR	SHEET NO.	TOTAL SHEETS
KANSAS	472-84692	2013	144	193

REFER TO STD. TE710 FOR ADDITIONAL INFORMATION ON TEMPORARY TRAFFIC CONTROL SIGNS AND SIGN SPACING. REFER TO STD. TE704 FOR TYPE III BARRICADES. REFER TO STD. TE702 FOR INFORMATION ON TAPERS AND CHANNELIZING DEVICES. REFER TO STD. TE700 FOR LENGTH OF BUFFER SPACE.



Drawn By : svb
 Plotted : 8/5/2013
 File : I:\2008\08207\Standards\08207-te748.dgn

* FOR SPEEDS GREATER THAN 45 MPH USE FREEWAY / EXPRESSWAY SIZE SIGNS.

- III TYPE III BARRICADES
- CHANNELIZING DEVICE
- AHEAD, 1500 FT, OR 1 MILE
- AHEAD, 1000 FT, 1500 FT, OR 1/2 MILE
- ⊕ RIGHT OR LEFT
- ⊗ SPEED TO BE DETERMINED BY THE ENGINEER
- TYPE "A" LOW INTENSITY WARNING LIGHT

3	10/4/11	Adjusted R2-1 and KM4-20 Sign Sizes	J.A.M.	K.P.
2	8/8/07	Sign Spacing Change	M.B.	A.A.A.
1	12/29/05	M4-20 Changed to KM4-20	M.B.	A.A.A.
NO.	DATE	REVISIONS	BY	APP'D

KANSAS DEPARTMENT OF TRANSPORTATION
TYPICAL TRAFFIC CONTROL
FOUR-LANE UNDIVIDED HIGHWAY
ONE-HALF ROADWAY CLOSED

TE748 9/1/00

DESIGNED	B.A.H.	QUANTITIES	TRACED
DESIGN CK.	DETAIL CK.	QUAN. CK.	TRACE CK.