

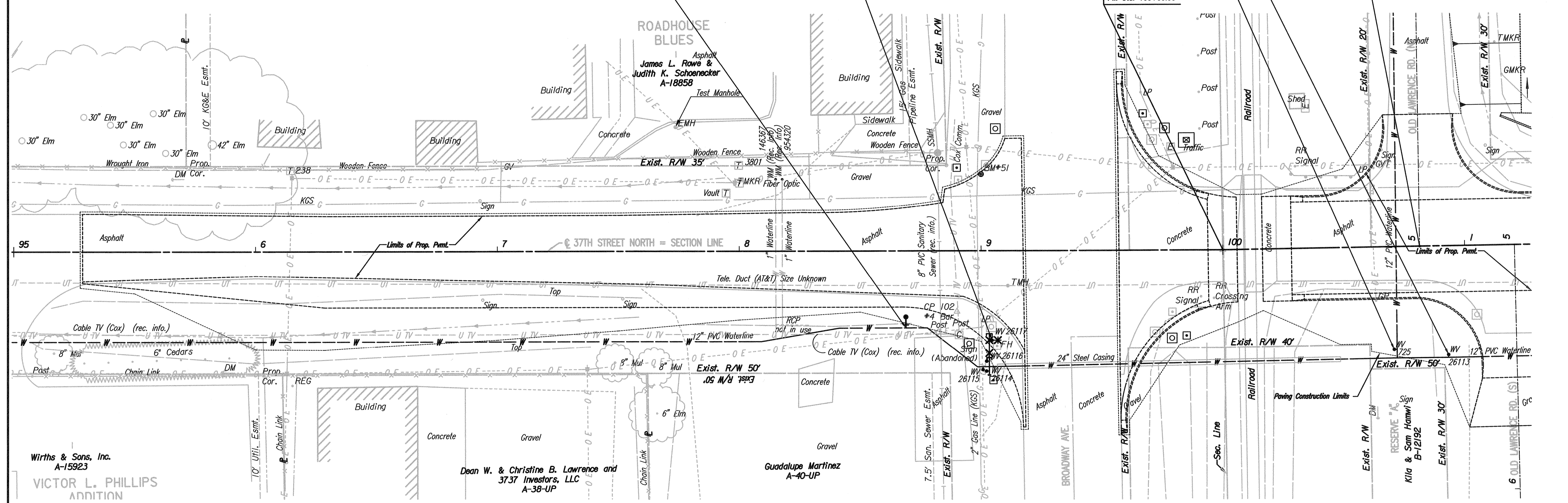
N: 1,709,667.3213, E: 1,648,789.3278
 @ 37th St. N., Sta. 98+68.85, 31.5' Rt.
 FH NO. 1
 Existing 12" Water Main *
 1- 12" x 6" Tapping Sleeve
 1- 6" Tapping Valve
 1- 6" Valve Box
 (To be furnished and set by City of
 Wichita Water Dept.)
 Top Valve Box El.= 1321.7
 4.50' 6" DI CL Pipe (N)
 1- Fire Hydrant
 FH Bury Line El.= 1321.8

N: 1,709,662.2964, E: 1,648,824.9262
 @ 37th St. N., Sta. 99+04.44, 36.6' Rt.
 Remove Existing Fire Hydrant, Valve, Valve
 Box, 12"x8" Reducer and 8" Pipe (North
 from Valve C.O.W. #26116).
 (Salvage to Wichita Water Utilities)
 Install 1- 12" CI MJ Plug (North of 12"
 Anchored Valve C.O.W. #26116).

N: 1,709,658.0846, E: 1,648,991.3671
 @ 37th St. N., Sta. 100+70.30, 42.1' Rt.
 Adjust Existing Water Valve Box (C.O.W. #725)
 Existing Top of Box Elev.= 1318.74
 Proposed Top of Box Elev.= 1321.34
 Difference = +2.60'

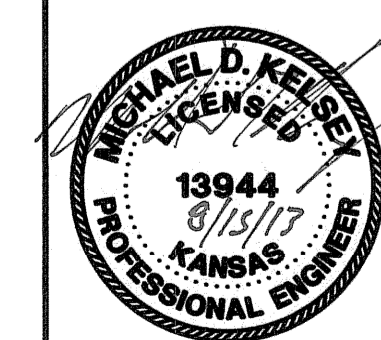
N: 1,709,655.9451, E: 1,649,013.8274
 @ 37th St. N., Sta. 100+97.72, 44.6' Rt.
 Adjust Existing Water Valve Box (C.O.W. #26113)
 Existing Top of Box Elev.= 1319.66
 Proposed Top of Box Elev.= 1321.52
 Difference = +1.86'

@ 37th St. N., Sta. 100+81.39=
 @ Old Lawrence Rd. (N), Sta. 5+00.00



X = Denotes Pipe to be abandoned in place.
 □ = Denotes Cap/Plug by the contractor
 (Includes removal of existing pavement and
 replacement with temporary pavement.)

* PRIOR TO BEGINNING CONSTRUCTION, THE CONTRACTOR SHALL EXCAVATE THE
 EXISTING 12" WATERLINE AT @ 37th St. N., Sta. 98+68.85, 31.5' Rt. TO VERIFY
 PIPE SIZE, TYPE, FITTINGS, AND HORIZONTAL AND VERTICAL LOCATION. THE
 CONTRACTOR SHALL REPORT HIS FINDINGS TO THE ENGINEER SO THAT ANY
 NECESSARY PLAN MODIFICATIONS CAN BE MADE. ANY ADDITIONAL LABOR OR
 MATERIALS NECESSARY TO COMPLETE THE CONNECTION SHALL BE CONSIDERED
 SUBSIDIARY TO THE PROJECT.



No.	Revision	By	Date

**37TH STREET NORTH - BROADWAY TO HYDRAULIC
 WATERLINE MODIFICATIONS
 MISCELLANEOUS ADJUSTMENT PLANS
 95+00 TO 101+00**

GARY JANZEN, P.E. - CITY ENGINEER
 CITY OF WICHITA PROJECT NO. 448-90581

PEC PROFESSIONAL ENGINEERING CONSULTANTS, P.A.
 303 SOUTH TOPEKA WICHITA, KS 67202
 316-262-2691 www.pec1.com

Designed by	MDK, SAD	Job No.	35-08207-0042	Sht. C4 of 34
Drawn by	CSL, JAN	Date	December 2011	

Saved 08-05-2013 8:36:27 AM by RFL
 Plot Scale 1:20 08-14-2013 11:03:18 AM by RFL
 G:\2008\08207\Waterline Adjustment Plans\08207-C04-WPlan01