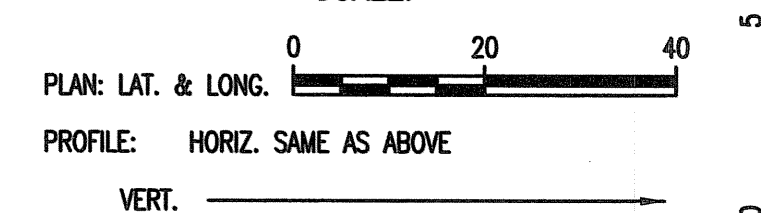


SCALE:



N: 1,709,653.5309, E: 1,649,065.7977
@ 37th St. N., Sta. 101+44.65, 47.9' Rt.
Adjust Existing Water Valve Box (C.O.W. #26112)
Existing Top of Box Elev. = 1319.64
Proposed Top of Box Elev. = 1321.15
Difference = +1.51'

N: 1,709,650.5315, E: 1,649,065.8508
@ 37th St. N., Sta. 101+44.65, 50.9' Rt.
FH ADJUSTMENT NO. 1
Adjust Existing Fire Hydrant Bury (C.O.W. #7997)
Total Adjustment = +1.50'
See detail, sheet no. C31.

@ 37th St. N., Sta. 104+40.63=
@ Topeka St., Sta. 5+00.00

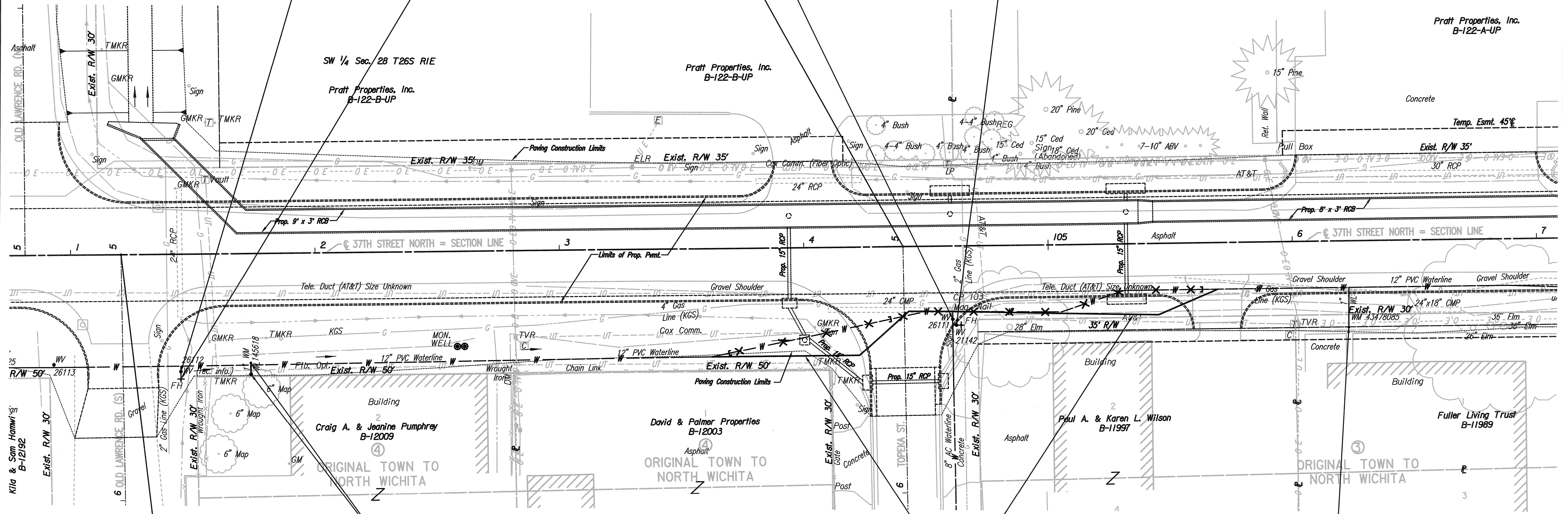
N: 1,709,676.5726, E: 1,649,381.4782
@ 37th St. N., Sta. 104+60.65, 29.8' Rt.
Adjust Existing Water Valve Box (C.O.W. #26111)
Existing Top of Box Elev. = 1320.72
Proposed Top of Box Elev. = 1319.68
Difference = -1.04'

N: 1,709,674.1452, E: 1,649,383.0442
@ 37th St. N., Sta. 104+62.18, 32.2' Rt.
Adjust Existing Water Valve Box (C.O.W. #21142)
Existing Top of Box Elev. = 1320.58
Proposed Top of Box Elev. = 1320.09
Difference = -0.49'

N: 1,709,673.8611, E: 1,649,543.6721
@ 37th St. N., Sta. 106+22.78, 35.1' Rt.
Adjust Existing Water Meter Top Elevation
Existing Top of Box Elev. = 1320.51
Proposed Top of Box Elev. = 1320.89
Difference = +0.38'

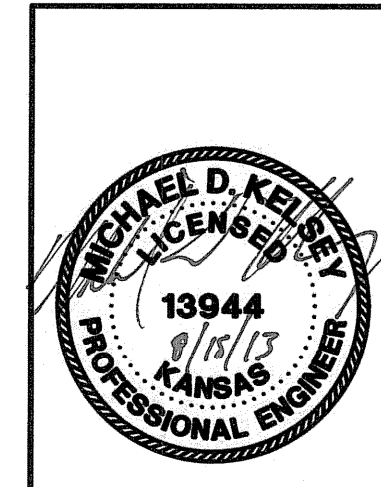
WATER SERVICE LINE REPLACEMENT NO. 1
N: 1,709,657.2299, E: 1,649,094.3935
@ 37th St. N., Sta. 101+73.30, 44.6' Rt.
Salvage existing Meter, Meter Box and Meter Setter
to the City of Wichita Water Utilities.
Install 1-1" Short Service
New Meter Box Location =
N: 1,709,652.5954, E: 1,649,094.5069
@ 37th St. N., Sta. 101+73.34, 49.23' Rt.
Proposed Top of Meter Box = 1321.2

WATERLINE ADJUSTMENT NO. 1
See sheet no. C15



X = Denotes Pipe to be abandoned in place.
C = Denotes Cap/Plug by the contractor
(Includes removal of existing pavement and replacement with temporary pavement.)

Save 07-31-2013 8:06:39 AM by RFS
C:\Users\rf5\Documents\35-08207-005-WFPlan02
C:\Users\rf5\Documents\35-08207-005-WFPlan02



No.	Revision	By	Date
37TH STREET NORTH - BROADWAY TO HYDRAULIC WATERLINE MODIFICATIONS MISCELLANEOUS ADJUSTMENT PLANS 101+00 to 107+00 GARY JANZEN, P.E. - CITY ENGINEER CITY OF WICHITA PROJECT NO. 448-90581			
		PROFESSIONAL ENGINEERING CONSULTANTS, P.A. 303 SOUTH TOPEKA WICHITA, KS 67202 316-262-2691 www.pec1.com	
Designed by	MDK, SAD	Job No.	35-08207-0042
Drawn by	CSL, JAN	Date	December 2011
			Sht. C5 of 34