

N: 1,709,749.6999, E: 1,650,429.4183
 @ 37th St. N., Sta. 115+09.61, 27.0° Lt.
 Remove Existing Water Valve (C.O.W. #5583)
 and Valve Box. (Salvage to Wichita Water Utilities)

N: 1,709,752.3620, E: 1,650,432.3569
 @ 37th St. N., Sta. 115+12.58, 29.6° Lt.
 Close Existing Water Valve (C.O.W. #5584)
 and Remove Existing Valve Box.
 (Salvage to Wichita Water Utilities)
 Install 1- 8" CIMJ Plug (W)

N: 1,709,757.7257, E: 1,650,646.3560
 @ 37th St. N., Sta. 117+26.64, 31.6° Lt.
 Adjust Existing Water Valve Box (C.O.W. #22305)
 Existing Top of Box Elev. = 1320.54
 Proposed Top of Box Elev. = 1319.93
 Difference = -0.61'

@ 37th St. N., Sta. 114+84.65=
 @ Santa Fe St., Sta. 5+00.00

WATERLINE ADJUSTMENT NO. 7
 See sheet no. C19

WATERLINE ADJUSTMENT NO. 8
 See sheet no. C20

WATERLINE ADJUSTMENT NO. 9
 See sheet no. C21

WATERLINE ADJUSTMENT NO. 5
 See sheet no. C18

WATERLINE ADJUSTMENT NO. 6
 See sheet no. C18

N: 1,709,697.7604, E: 1,650,456.6090
 @ 37th St. N., Sta. 115+35.97, 25.4° Rt.
 Adjust Existing Water Valve Box (C.O.W. #16837)
 Existing Top of Box Elev. = 1320.52
 Proposed Top of Box Elev. = 1321.60
 Difference = +1.08'

N: 1,709,692.3858, E: 1,650,456.6780
 @ 37th St. N., Sta. 115+35.97, 30.8° Rt.
 FH ADJUSTMENT NO. 3
 Adjust Existing Fire Hydrant Bury (C.O.W. #3375)
 Total Adjustment = +1.00'
 See detail, sheet no. C31.

N: 1,709,700.4847, E: 1,650,448.3961
 @ 37th St. N., Sta. 115+27.81, 22.6° Rt.
 Close Existing Water Valve (C.O.W. #7678)
 and Remove Existing Valve Box.
 (Salvage to Wichita Water Utilities)
 Install 1- 12" CIMJ Plug (N)

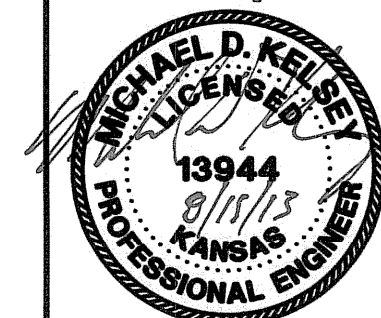
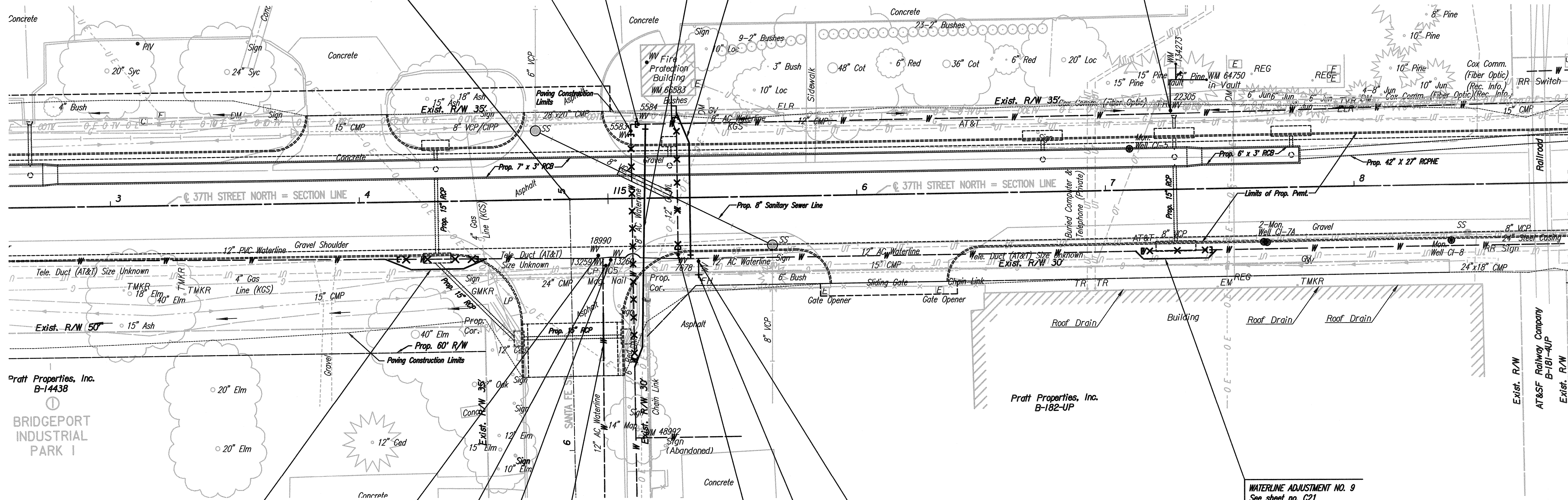
N: 1,709,700.0676, E: 1,650,416.3411
 @ 37th St. N., Sta. 114+95.76, 22.5° Rt.
 Adjust Existing Water Valve Box (C.O.W. #18990)
 Existing Top of Box Elev. = 1322.18
 Proposed Top of Box Elev. = 1320.81
 Difference = -1.37'


N: 1,709,695.9694, E: 1,650,419.3581
 @ 37th St. N., Sta. 114+98.71, 26.6° Rt.
 Adjust Existing Water Valve Box (C.O.W. #13259)
 Existing Top of Box Elev. = 1321.84
 Proposed Top of Box Elev. = 1320.77
 Difference = -1.07'

N: 1,709,698.2449, E: 1,650,421.3461
 @ 37th St. N., Sta. 115+00.73, 24.4° Rt.
 Adjust Existing Water Valve Box (C.O.W. #13260)
 Existing Top of Box Elev. = 1321.97
 Proposed Top of Box Elev. = 1320.67
 Difference = -1.30'

CAUTION !!!
 Existing Vertical Tapping Valve at
 12" Water Main on this FH Branch.

X = Denotes Pipe to be abandoned in place.
 C = Denotes Cap/Plug by the contractor
 (Includes removal of existing pavement and
 replacement with temporary pavement.)



No.	Revision	By	Date
37TH STREET NORTH - BROADWAY TO HYDRAULIC WATERLINE MODIFICATIONS MISCELLANEOUS ADJUSTMENT PLANS 112+80 to 118+50 GARY JANZEN, P.E. - CITY ENGINEER CITY OF WICHITA PROJECT NO. 448-90581			
 PEC PROFESSIONAL ENGINEERING CONSULTANTS, P.A. 303 SOUTH TOPEKA WICHITA, KS 67202 316-262-2691 www.pec1.com			
Designed by	MDK, SAD	Job No.	35-08207-0042
Drawn by	CSL, JAN	Date	December 2011
			Sheet C7 of 34

Saved 07-31-2013 8:07:39 AM by RFL
 Plot Scale 1:20 09-14-2013 11:08:18 AM by RFL
 C:\2008\08207\Waterline Adjustment Plans\08207-007-WL Plan04.dwg