

N: 1,709,763.8225, E: 1,650,822.8365
 @ 37th St. N., Sta. 119+03.20, 34.9' Lt.
 Adjust Existing Water Valve Box (C.O.W. #4563)
 Existing Top of Box Elev. = 1321.27
 Proposed Top of Box Elev. = 1322.48
 Difference = +1.21'

N: 1,709,763.2928, E: 1,650,826.7120
 @ 37th St. N., Sta. 119+07.07, 34.4' Lt.
 Adjust Existing Water Valve Box (C.O.W. #5677)
 Existing Top of Box Elev. = 1321.37
 Proposed Top of Box Elev. = 1322.55
 Difference = +1.18'

WATER SERVICE LINE REPLACEMENT NO. 2
 N: 1,709,759.9237, E: 1,651,239.4995
 @ 37th St. N., Sta. 123+19.74, 23.5' Lt.
 Salvage existing Meter, Meter Box and Meter Setter to the City of Wichita Water Utilities.
 Install 1-1" Long Service to facilitate New 42"x27" RCPHE.
 Bottom of proposed RCPHE = 1317.20
 Provide 12" clear (min.)

WATER SERVICE LINE REPLACEMENT NO. 3
 N: 1,709,759.0451, E: 1,651,247.2517
 @ 37th St. N., Sta. 123+27.49, 23.5' Lt.
 Install 1-2" Long Service to facilitate New 42"x27" RCPHE.
 Bottom of proposed RCPHE = 1317.21
 Provide 12" clear (min.)

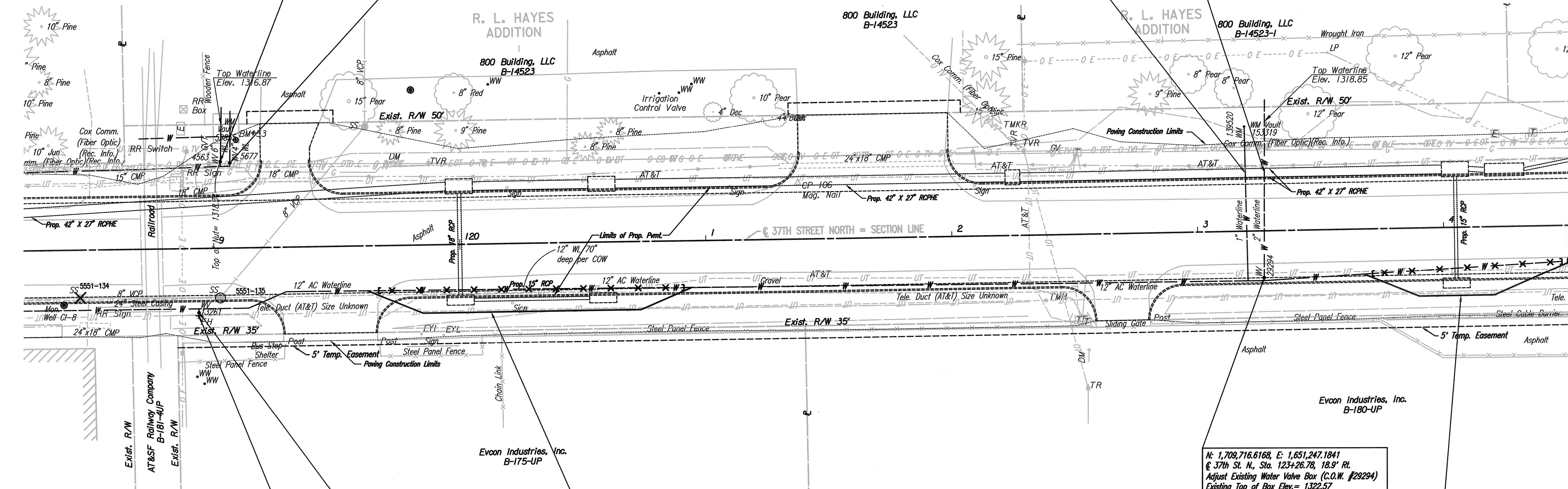
N: 1,709,702.8548, E: 1,650,814.1765
 @ 37th St. N., Sta. 118+93.59, 25.8' Rt.
 Adjust Existing Water Valve Box (C.O.W. #13261)
 Existing Top of Box Elev. = 1321.07
 Proposed Top of Box Elev. = 1322.39
 Difference = +1.32'

N: 1,709,701.6065, E: 1,650,814.1765
 @ 37th St. N., Sta. 118+93.57, 27.2' Rt.
 FH ADJUSTMENT NO. 4
 Adjust Existing Fire Hydrant Bury (C.O.W. #4149)
 Total Adjustment = +1.50'
 See detail, sheet no. C31.

WATERLINE ADJUSTMENT NO. 10
 See sheet no. C21

N: 1,709,716.6168, E: 1,651,247.1841
 @ 37th St. N., Sta. 123+26.78, 18.9' Rt.
 Adjust Existing Water Valve Box (C.O.W. #29294)
 Existing Top of Box Elev. = 1322.57
 Proposed Top of Box Elev. = 1321.96
 Difference = -0.61'

WATERLINE ADJUSTMENT NO. 11
 See sheet no. C22



X = Denotes Pipe to be abandoned in place.
 C = Denotes Cap/Plug by the contractor
 (includes removal of existing pavement and replacement with temporary pavement.)

Saved 07-31-2013 8:05:12 AM by RFD
 Plot Scale 1:20 08-14-2013 11:09:34 AM by RFD
 G:\2008\08207\Waterline Adjustment Plans\08207-C08-WLPlans05

	37TH STREET NORTH - BROADWAY TO HYDRAULIC WATERLINE MODIFICATIONS MISCELLANEOUS ADJUSTMENT PLANS 118+50 to 124+00 GARY JANZEN, P.E. - CITY ENGINEER CITY OF WICHITA PROJECT NO. 448-90581	
	Designed by MDK, SAD Drawn by CSL, JAN	Job No. 35-08207-0042 Date December 2011