

N: 1,709,780.1786, E: 1,652,571.9263
 @ 37th St. N., Sta. 136+52.10, 32.3' Lt.
 Adjust Existing Water Meter Top Elevation
 Existing Top of Box Elev.= 1324.29
 Proposed Top of Box Elev.= 1324.85
 Difference = +0.56'

WATER SERVICE LINE REPLACEMENT NO. 5
 N: 1,709,772.4451, E: 1,652,787.6372
 @ 37th St. N., Sta. 138+67.74, 23.0' Lt.
 Install 1-1" Long Service to facilitate New 30" RCP.
 Bottom of proposed RCP = 1318.35
 Provide 12" clear (min.)

No Adjustments Needed

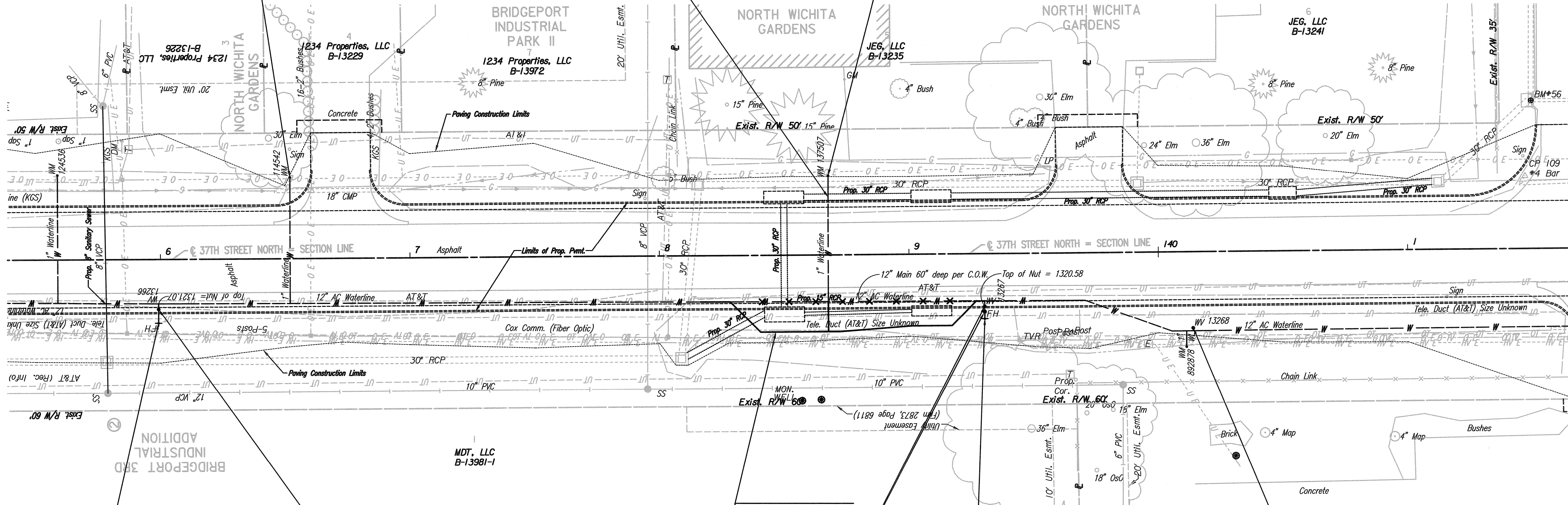
JEG, LLC
 B-13241

JEG, LLC
 B-13235

BRIDGEPORT INDUSTRIAL PARK II
 1234 Properties, LLC
 B-13972

1234 Properties, LLC
 B-13229

1234 Properties, LLC
 B-13226



N: 1,709,727.6896, E: 1,652,519.3487
 @ 37th St. N., Sta. 135+99.14, 25.4' Rt.
 Adjust Existing Water Valve Box (C.O.W. #13266)
 Existing Top of Box Elev.= 1324.00
 Proposed Top of Box Elev.= 1324.27
 Difference = +0.27'

WATERLINE ADJUSTMENT NO. 16
 See sheet no. C25

N: 1,709,724.0682, E: 1,652,850.5130
 @ 37th St. N., Sta. 139+30.26, 25.8' Rt.
 FH ADJUSTMENT NO. 7
 Adjust Existing Fire Hydrant Bury (C.O.W. #4154)
 Total Adjustment = -1.00'
 See detail, sheet no. C31.

No Adjustments Needed

N: 1,709,722.1003, E: 1,652,519.3487
 @ 37th St. N., Sta. 135+99.09, 19.8' Rt.
 FH ADJUSTMENT NO. 6
 Adjust Existing Fire Hydrant Bury (C.O.W. #4153)
 Total Adjustment = +1.00'
 See detail, sheet no. C31.

N: 1,709,728.9916, E: 1,652,850.4422
 @ 37th St. N., Sta. 139+30.31, 20.9' Rt.
 Relocate Existing Water Valve (C.O.W. #13267)
 and Valve Box to
 N: 1,709,726.9047, E: 1,652,850.4563
 @ 37th St. N., Sta. 139+30.31, 23.0' Rt.
 Existing Top of Box Elev.= 1324.83
 Proposed Top of Box Elev.= 1323.10
 Difference = -1.73'
 Cost subsidiary to FH Adjustment No. 7.

X = Denotes Pipe to be abandoned in place.
 □ = Denotes Cap/Plug by the contractor
 (Includes removal of existing pavement and replacement with temporary pavement.)

No.		Revision		By		Date	
37TH STREET NORTH - BROADWAY TO HYDRAULIC WATERLINE MODIFICATIONS MISCELLANEOUS ADJUSTMENT PLANS 135+70 to 141+00 GARY JANZEN, P.E. - CITY ENGINEER CITY OF WICHITA PROJECT NO. 448-90581							
Designed by		MDK, SAD		Job No.		35-08207-0042	
Drawn by		CSL, JAN		Date		December 2011	
						Sht. C11 of 34	