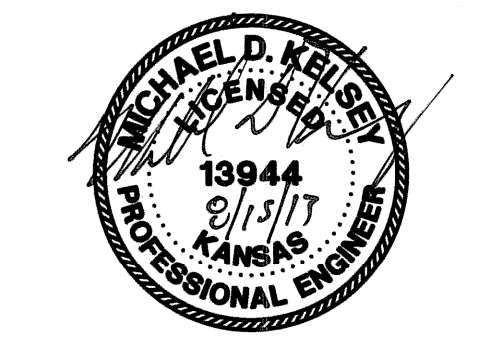
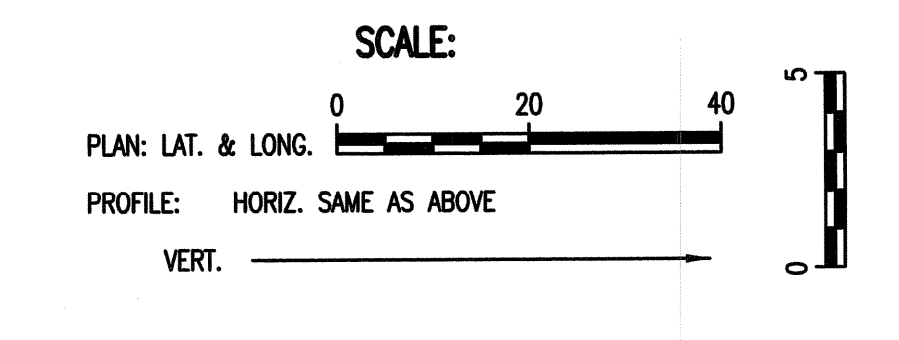
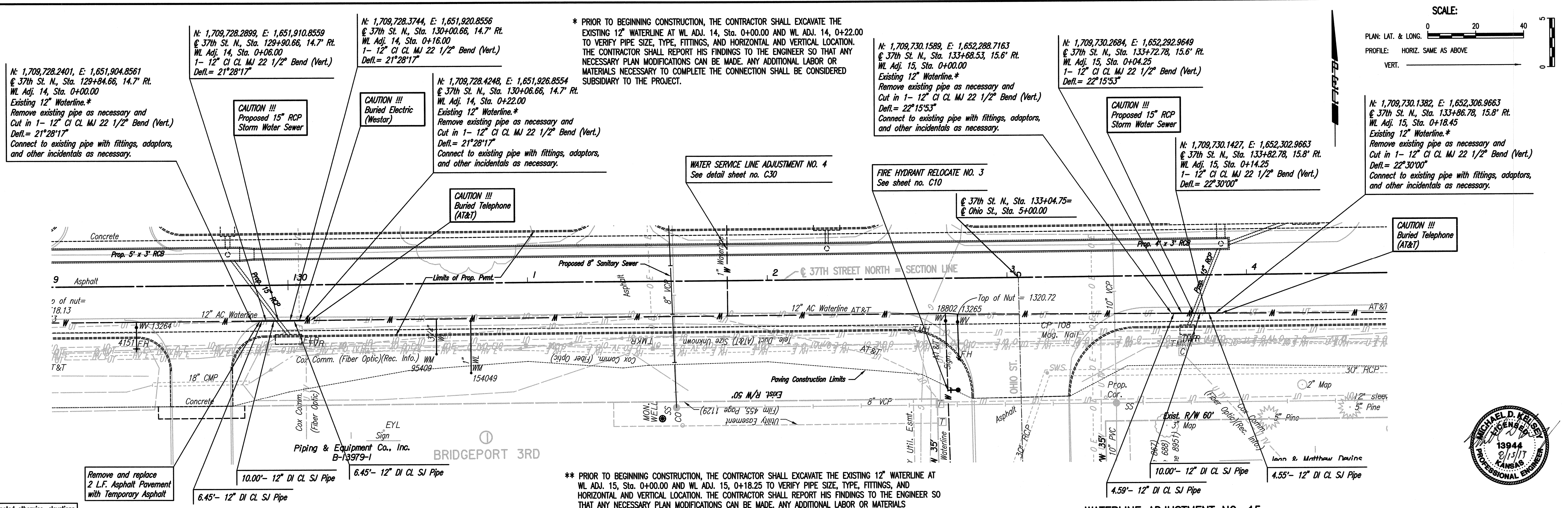


DATE
BY
CHECKED
PLAN

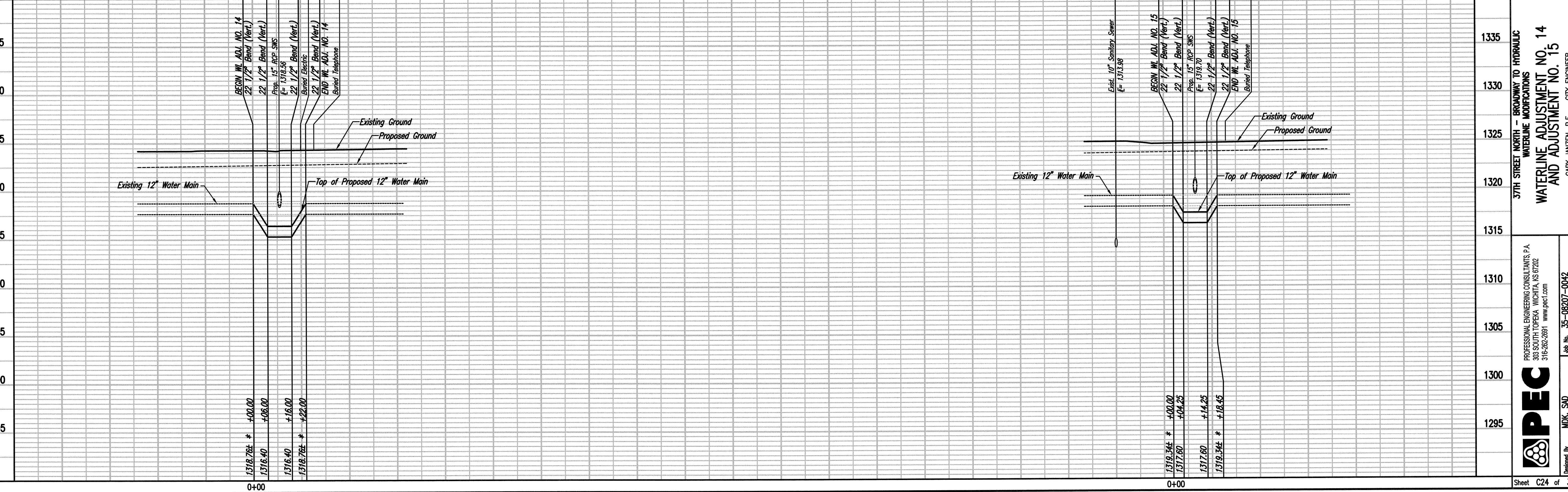
DATE
BY
CHECKED
PROFILE

Saved 04-04-2013 10:23:10 AM by RFL  
 C:\2008\08207\Waterline Adjustment Plans\08207-C24-WL Adj. 14 and 15



**WATERLINE ADJUSTMENT NO. 14**

**WATERLINE ADJUSTMENT NO. 15**



37TH STREET NORTH - BROADWAY TO HYDRAULIC  
 WATERLINE MODIFICATIONS  
**WATERLINE ADJUSTMENT NO. 14  
 AND ADJUSTMENT NO. 15**  
 GARY JANZEN, P.E. - CITY ENGINEER  
 CITY OF WICHITA PROJECT NO. 448-90661

PROFESSIONAL ENGINEERING CONSULTANTS, P.A.  
 303 SOUTH TOPEKA WICHITA, KS 67202  
 316-262-2891 www.pec.com  
**PEC**  
 Designed By: MDK, SAD  
 Drawn By: CSL, JAN  
 Job No.: 35-08207-0042  
 Date: December 2011  
 Sheet C24 of 34