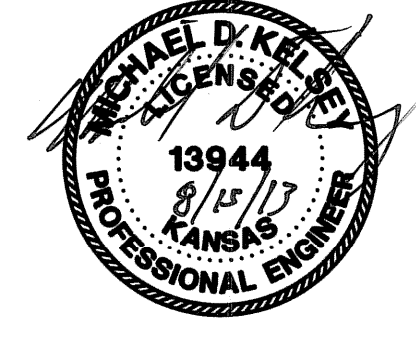
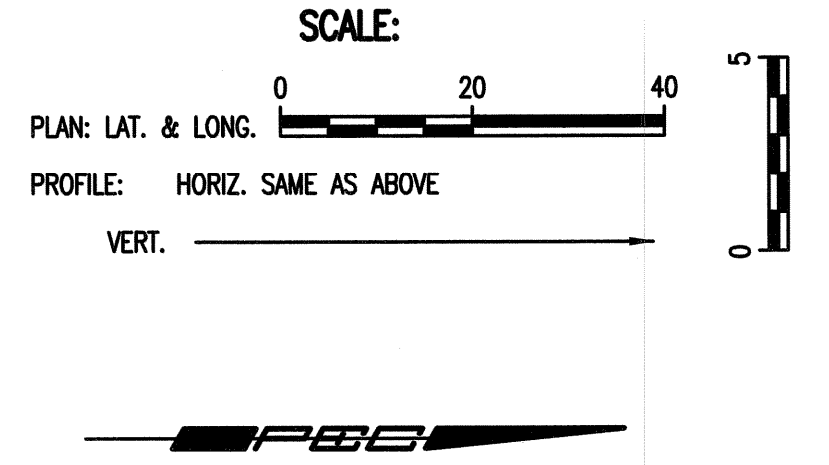
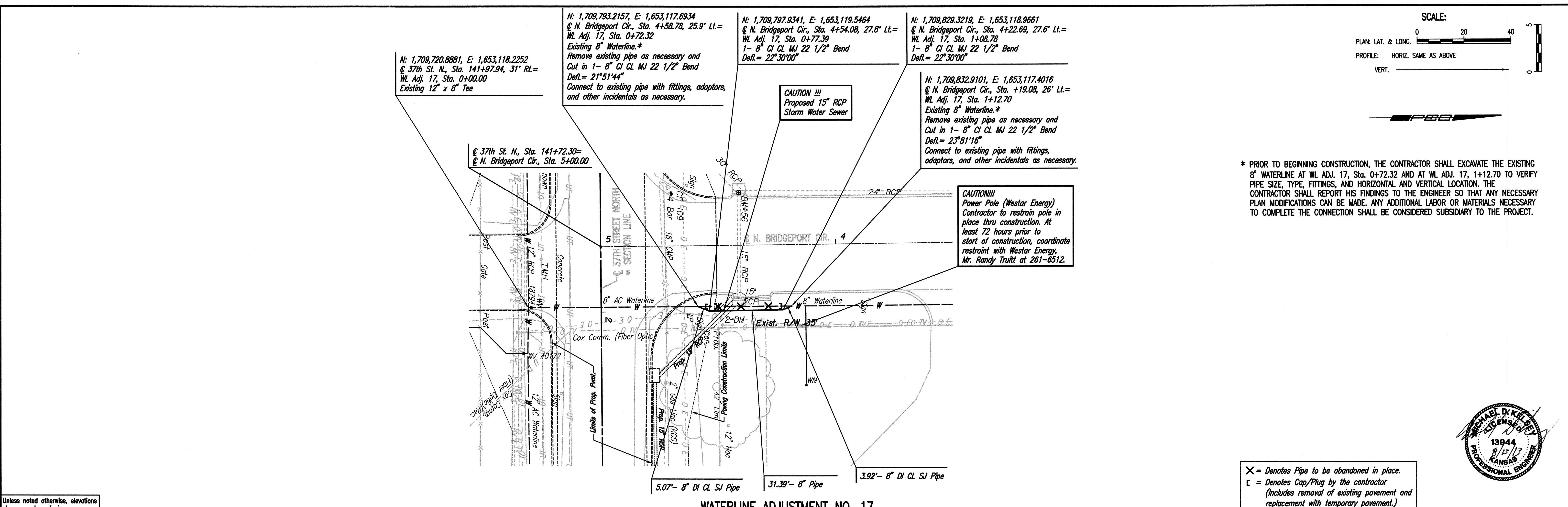


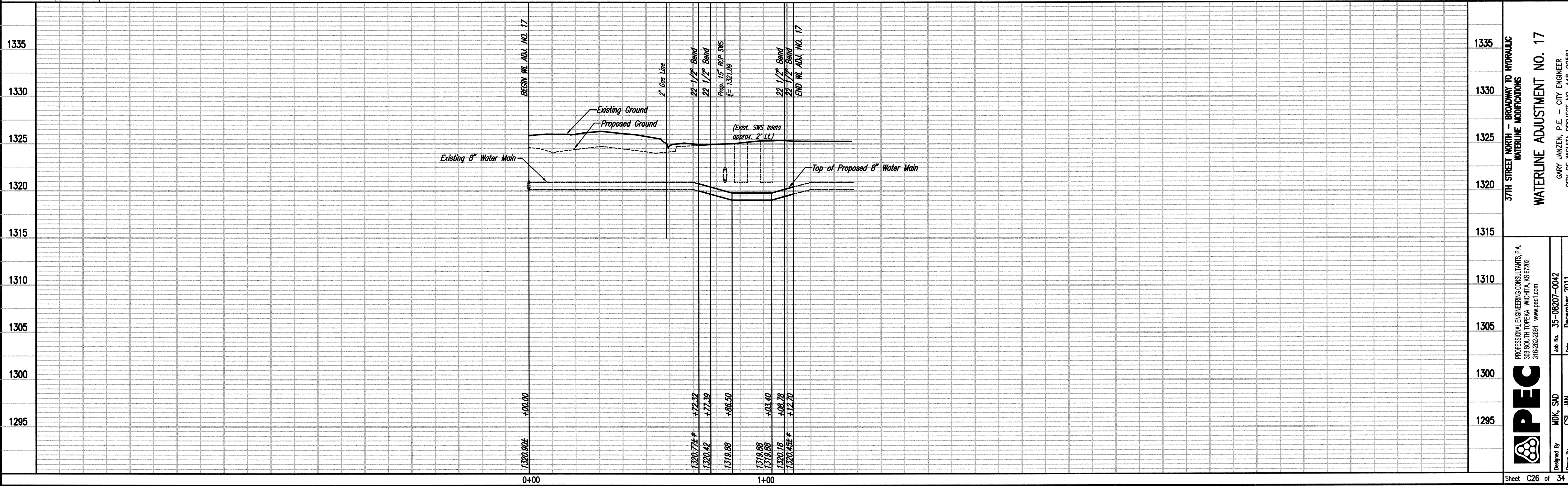
PLAN	CHECKED	DATE
	CHECKED	
BY		

PROFILE	CHECKED	DATE
	CHECKED	
BY		

Saved: 08-13-2013 11:12:37 AM by GJM
 Plot Scale: 1:20, 08-14-2013 11:44:55 AM by BEJ
 G:\2008\08207\Waterline Adjustment Plans\08207-C26-WL Adj. 17



X = Denotes Pipe to be abandoned in place.
 ⊔ = Denotes Cap/Plug by the contractor (Includes removal of existing pavement and replacement with temporary pavement.)



PEC
 PROFESSIONAL ENGINEERING CONSULTANTS, P.A.
 303 SOUTH TOPICKA WICHITA, KS 67202
 316-262-2681 www.pec.com

37TH STREET NORTH - BROADWAY TO HYDRAULIC WATERLINE MODIFICATIONS

WATERLINE ADJUSTMENT NO. 17

Designed By: MDK, SAD
 Drawn By: CSL, JAN
 Job No. 35-08207-0042
 Date December 2011

CARY JANZEN, P.E. - CITY ENGINEER
 CITY OF WICHITA PROJECT NO. 448-90581

Sheet C26 of 34