

Remove 456 lf of 8" Pipe  
 Install 456 lf of 8" Pipe  
 Estimated 17 Service Reconnections (4")  
 Easement is 16 ft wide

Estimated 20 lf Back of Curb Protection  
 Estimated 30 sy Erosion Control Mat  
 Estimated 20 lf Silt Fence

MH 5650-272  
 Replace Manhole Frame & Cover  
 Remove & Replace Manhole Bench & Invert  
 2351 N. Chautauqua  
 Not measured / est. depth = 11.5 ft  
 (2 taps located on manhole wall)

MH 5650-271  
 Remove & Replace Manhole Bench & Invert  
 2331 N. Chautauqua  
 Approx MH depth = 9.4 ft

MH 5650-262  
 Replace Manhole Frame & Cover  
 Remove & Replace Manhole Bench & Invert  
 Not measured / est. depth = 11.5 ft

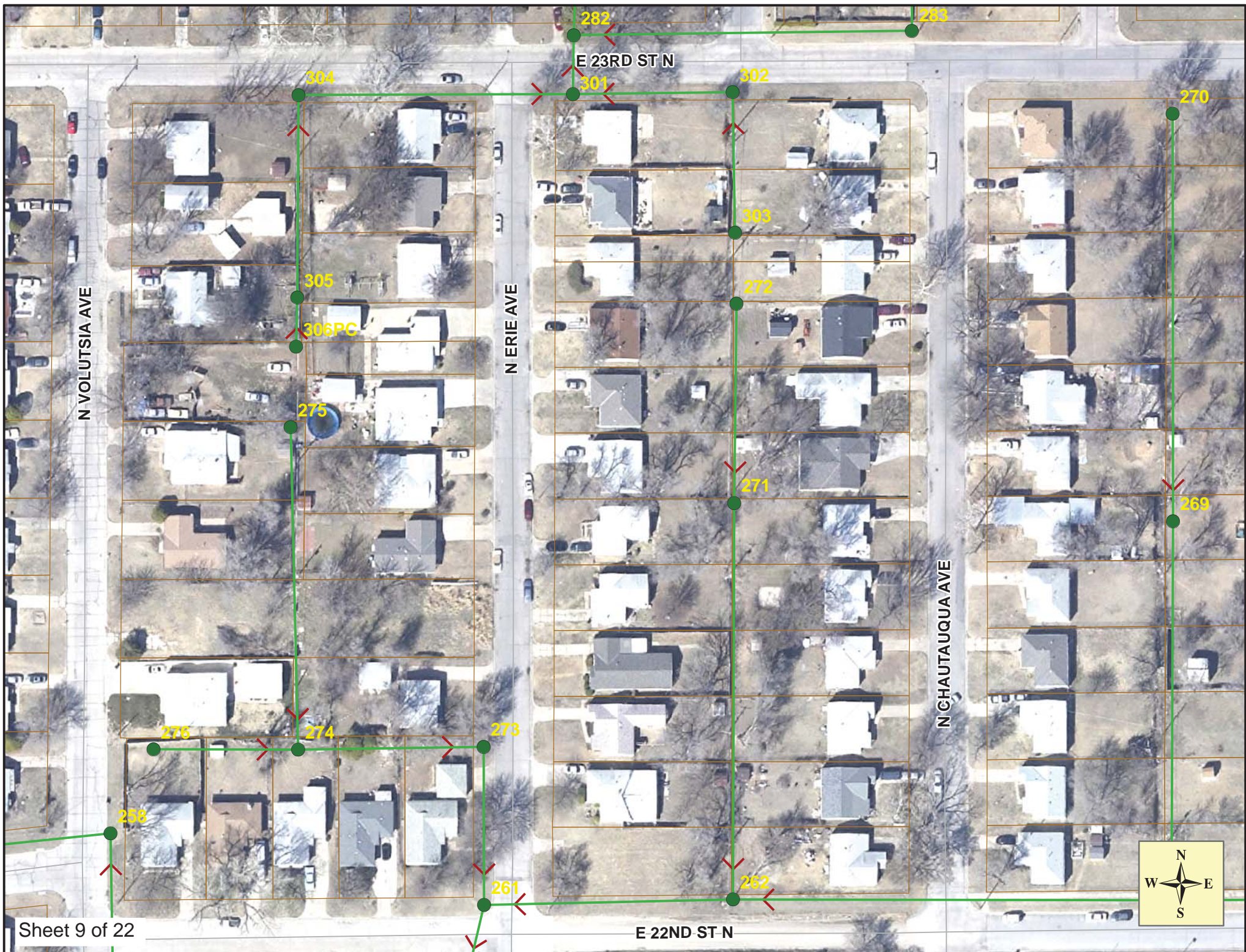
**SITE 2**

Sheet 8 of 22

188' (unpaved road) 22nd Street North



313'



## Video Inspection Master Report

9/5/2013

3:29 PM

US Structure: 5650-272                      2351 N CHAUTAUQUA AVE    Date Insp: 7/30/2013                      Basin: EC02D  
 DS Structure: 5650-271                      2331 N CHAUTAUQUA ST    Dir Televised: Downstream To Upstream

**Pipe Information**

Shape: Round	Length Status:	Project No. : G-147
Dia/Ht: 8	Material: VCP	Index:
Length: 151.5	Slope: 0.197	Overall Cond: Poor

Obs. #	VTR Counter	Distance	Location	Description	Rating	Ratings			
						Obsrvd (gpm)	Est. (gpm)	Struct Clean	Remain (gpm)
1		0.0	5650-271 / tv against flow	DS Manhole	1				
2		17.6		Grease	1				
3		20.6	2339 N CHAUTAUQUA	Wye Service	1	2339 Chautauqua has a small shed over sewer line - LML			
4		23.6	2338 N ERIE	Break-In Conn	1	PVC service outside of the main - LML			
5		25.3		Grease	1				
6		29.3		Crack-Horizontal	1				
7		29.8		Infiltration	1	ROOTS			
8		35.2		Crack-Horizontal	1				
9		36.0		Broken Pipe	3	all quadrants - LML			
10		46.2		Grease	1				
		52.0				Very heavy roots at the joint - LML			
11		53.6	2344 N ERIE	Break-In Conn	5	ROOTS & BROKEN PIPE			
12		56.4	2345 N CHAUTAUQUA	Break-In Conn	4	Broken pipe			
13		59.4		Sealed Off Wye	1				
14		83.7		Crack-Horizontal	4				
15		107.4	2351 N CHAUTAUQUA	Break-In Conn	1	PVC service outside of the main - LML			
16		108.5	2350 N ERIE	Break-In Conn	5	GAPPED AT MAIN & CRACKS Pipe missing - LML			
17		122.2		Sealed Off Wye	1				
		147.0				heavy roots hang from crown (or could be hanging from manhole wall, can't tell - LML			
18		149.2	2357 N CHAUTAUQUA	Break-In Conn	5	ROOTS Tap on east wall / looks to be greater than 2 ft from bottom of manhole / heavy roots hang down the wall below this tap - LML			
19		149.2	2356 N ERIE	Break-In Conn	1	Tap on west wall / looks to be greater than 2 ft from bottom of manhole / heavy roots hang down the wall below this tap - LML			
20		149.2	5650-272	US Manhole	5	manhole wall needs sealed - LML			

## Video Inspection Master Report

9/5/2013

3:29 PM

US Structure: 5650-271                      2331 N CHAUTAUQUA ST      Date Insp: 7/30/2013                      Basin: EC02D  
 DS Structure: 5650-262                      2301 N CHAUTAUQUA ST      Dir Televised: Downstream To Upstream

**Pipe Information**

Project No. : G-147                      Dia/Ht: 8                      Material: VCP                      Length: 304.9                      Overall Cond:Very Poor

Obs. #	VTR Counter	Distance	Location	Description	Rating	Ratings			Remain (gpm)
						Obsrvd (gpm)	Est. (gpm)	Struct Clean	
1		0.0	5650-262 / tv against flow	DS Manhole	1				
2		26.6	2301 N CHAUTAUQUA	Break-In Conn	1	PVC tap - LML			
3		29.5		Sealed Off Wye	5	ROOTS			
4		62.8		Crack-Horizontal	3				
5		65.9	2307 N CHAUTAUQUA	Break-In Conn	5	CRACKS & ROOTS.			
6		66.4		Grease	1				
7		66.4		Crack-Horizontal	1				
8		68.7	2308 N ERIE	Break-In Conn	4	CRACKS & ROOTS. GREASE			
9		72.4		Crack-Horizontal	2				
10		75.1		Crack-Horizontal	3				
11		78.2		Crack-Horizontal	3	GREASE			
12		81.3		Crack-Horizontal	1				
13		87.1		Crack-Horizontal	1				
14		89.3		Sealed Off Wye	1				
15		89.6		Crack-Horizontal	3				
16		92.5		Sealed Off Wye	1				
17		99.7		Crack-Horizontal	1				
18		118.5	2313 N CHAUTAUQUA	Break-In Conn	3	ROOTS	PVC tap w/roots around it - LML		
19		119.1		Grease	2				
20		128.5		Crack-Horizontal	3				
21		131.8	2314 N ERIE	Break-In Conn	5	CRACKS & ROOTS			
22		134.4		Grease	2				
23		140.5		Grease	2				
24		143.4		Broken Pipe	3	broken invert - LML			
25		149.1		Sealed Off Wye	1				
26		149.8		Broken Pipe	4	broken invert - LML			
27		152.0		Sealed Off Wye	1				
28		154.1		Broken Pipe	4	all quadrants - LML			
29		163.5	2319 N CHAUTAUQUA	Break-In Conn	3	CRACKS 7 ROOTS			
30		178.7		Mat. Chngs to PVC	1				
31		181.8	2318 N ERIE	Break-In Conn	1	PVC tap - LML			
32		182.2		Mat. Chngs to VCP	1				
33		183.5		Crack-Horizontal	2				
34		206.5		Sealed Off Wye	1				
35		209.6		Sealed Off Wye	1				
36		220.5	2325 N CHAUTAUQUA	Break-In Conn	1				
37		226.4	2322 N ERIE	Break-In Conn	1	heavy mineral deposit - LML			
38		254.1		Broken Pipe	4	broken invert / heaved up - LML			
39		257.0		Sealed Off Wye	1				
40		260.3	2326 N ERIE	Break-In Conn	1				
41		262.3	2331 N CHAUTAUQUA	Break-In Conn	1	PVC tap - LML			
42		270.1		Grease	1				
43		278.6		Infiltration	2	infiltration at a joint - LML			
44		304.5	5650-271	US Manhole	1	Lots of bad taps / infiltration / must open cut -LML			