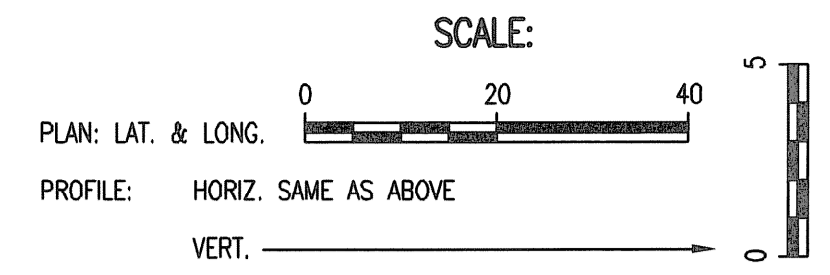
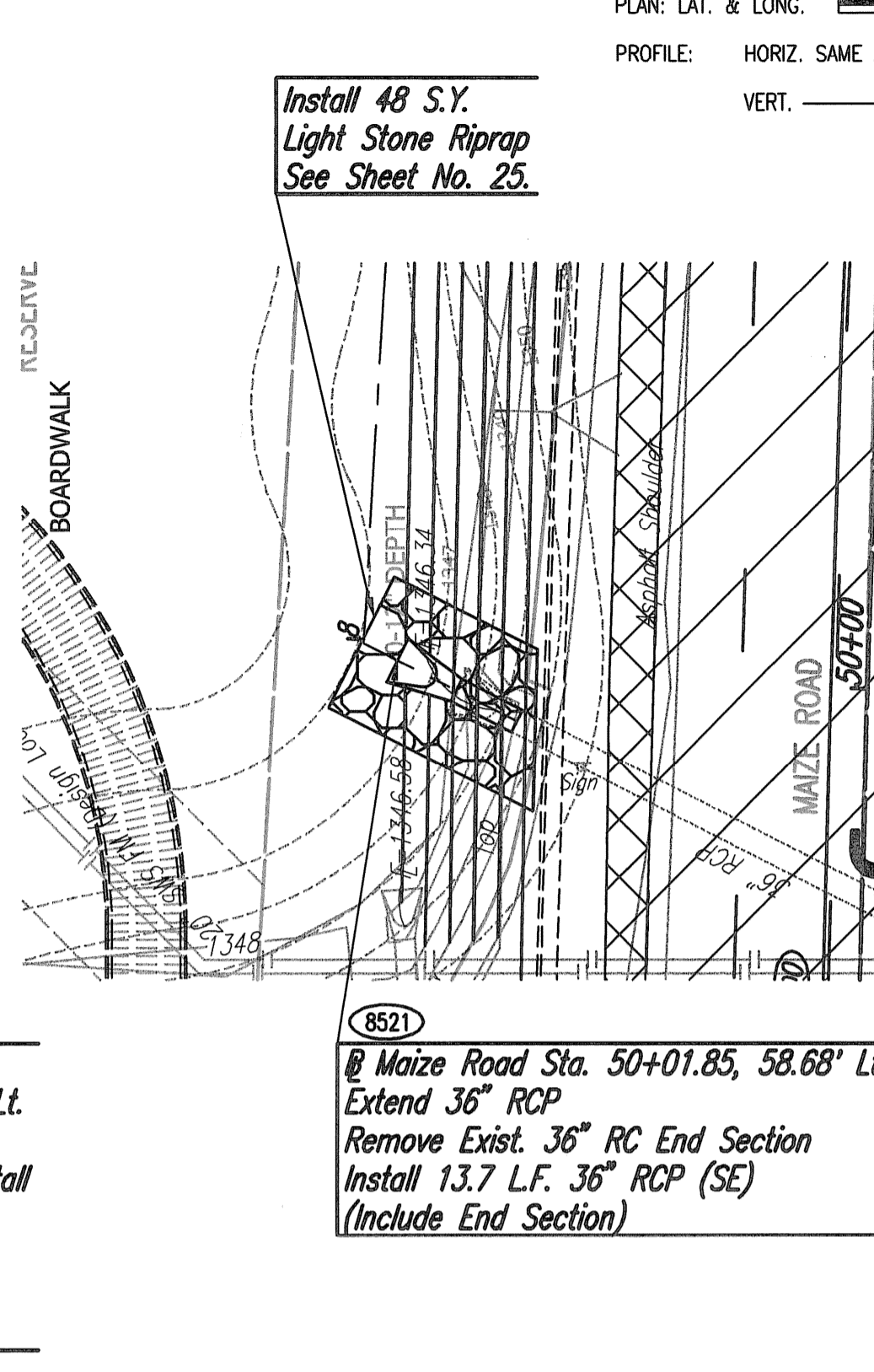
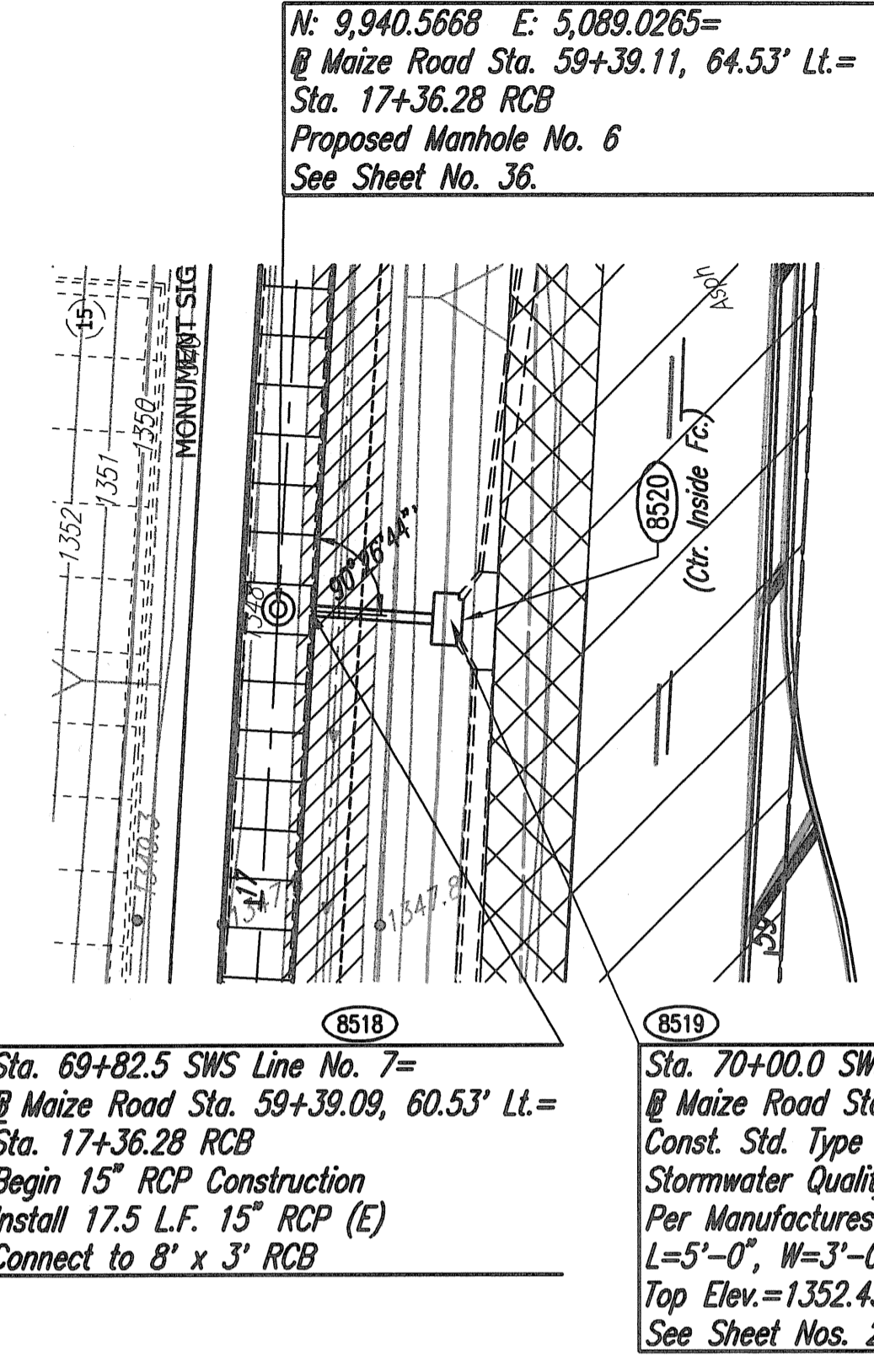
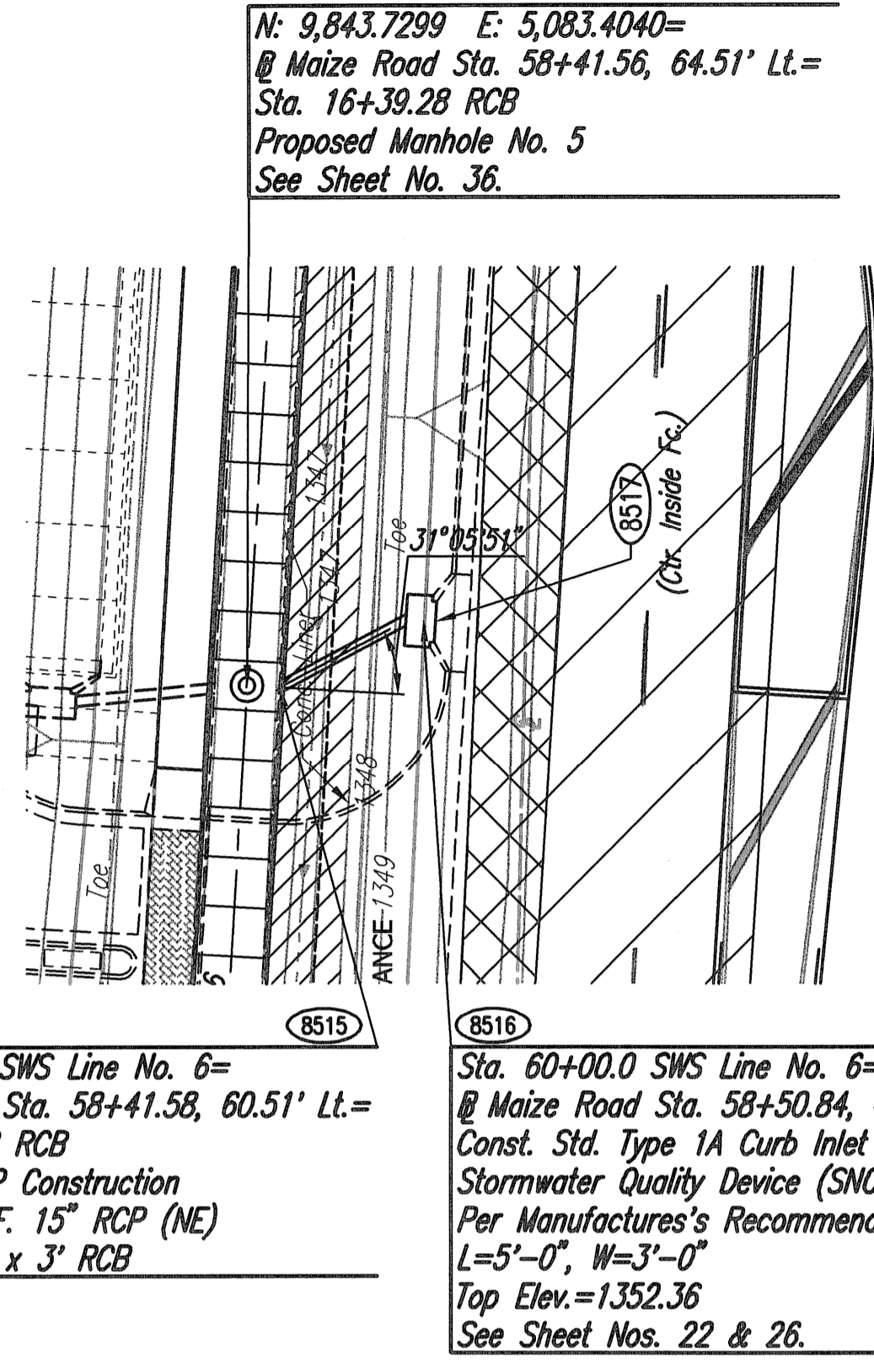
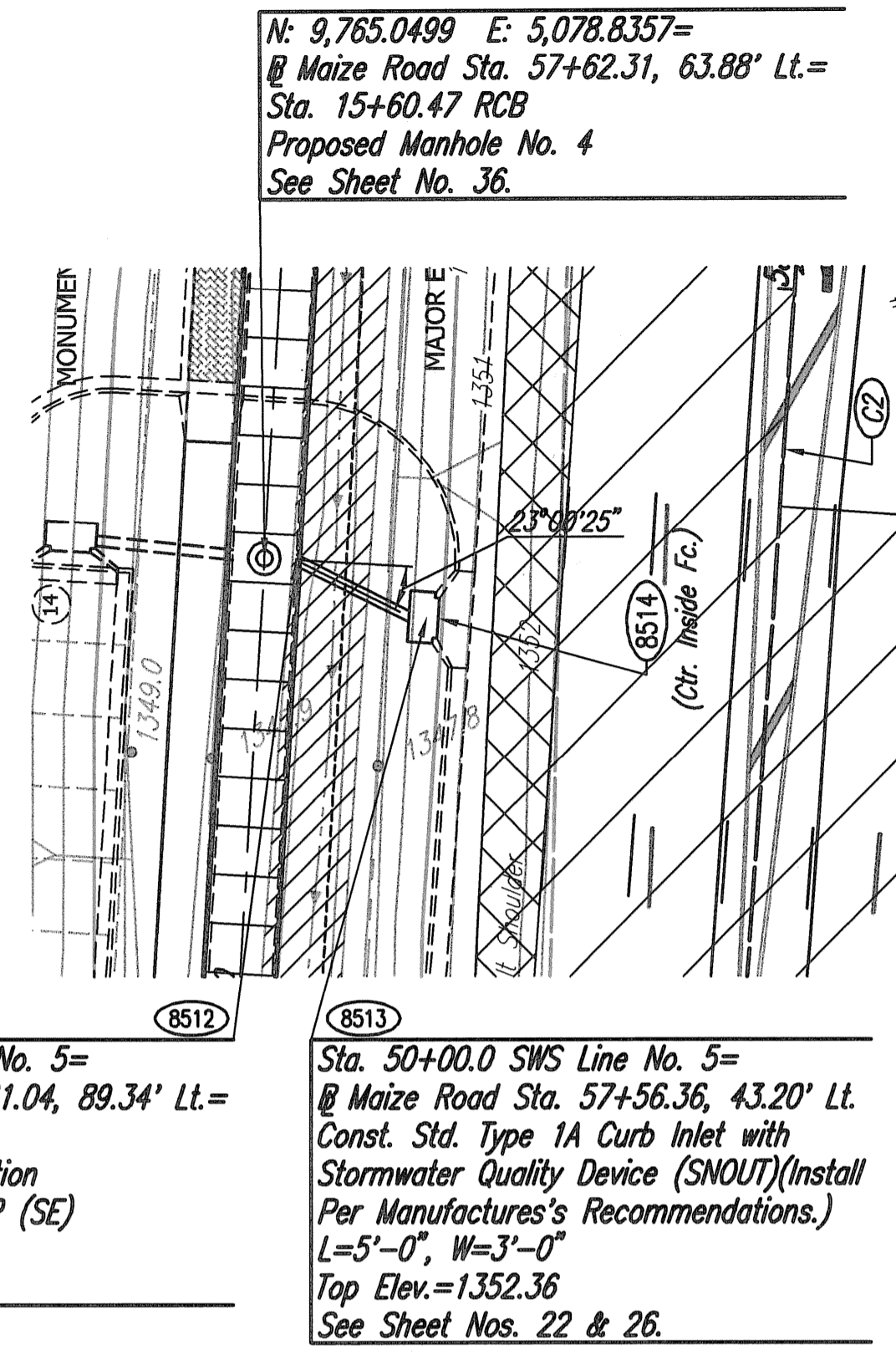


PLAN	CHECKED	DATE
	CHECKED	

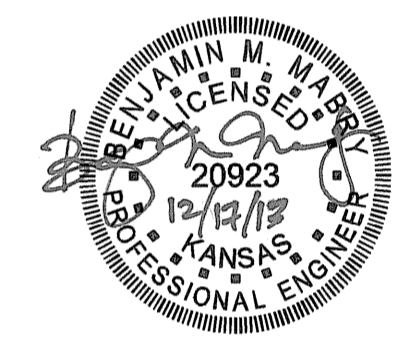
PROFILE	CHECKED	DATE
	CHECKED	

Saved 12-04-2013 4:36:51 PM by BJS
 Plot Scale 1:20 12-17-2013 1:23:44 PM by BJS
 C:\2012\12568\000_001\12568-001-210.PLAN AND PROFILE-SWS LINE NOS 5-7



POINT	COORDINATE LIST	
	NORTH	EAST
8512	9,764.8181	5,082.8290
8513	9,757.7088	5,099.0500
8514	9,757.6040	5,100.5462
8515	9,843.4981	5,087.3973
8516	9,851.6238	5,105.2420
8517	9,851.5312	5,106.7391
8518	9,940.3350	5,093.0198
8519	9,939.1958	5,110.3154
8520	9,939.1148	5,111.8131
8521	9,003.2995	5,038.9202

8512 = COORDINATE POINT NO.
 SEE SHEET NO. 3 FOR PLAT COORDINATES

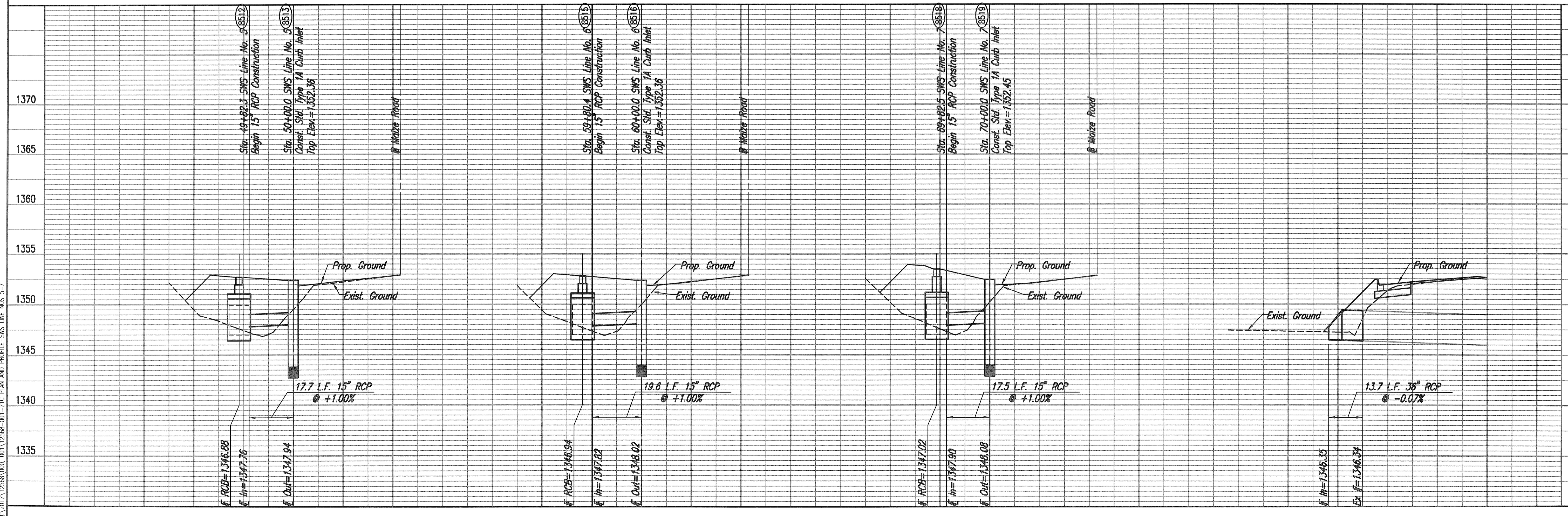


SWS LINE NO. 5

SWS LINE NO. 6

SWS LINE NO. 7

36" SWS LINE EXTENSION



MAIZE ROAD PAVING AND DRAINAGE IMPROVEMENTS
 LOT 1, BLOCK 1 NEWMARKET V ADDITION
SWS LINE NOS. 5 THRU 7
 GARY JANZEN, P.E.-CITY ENGINEER
 CITY OF WICHITA PROJECT NO. 472-84607

IPEC
 PROFESSIONAL ENGINEERING CONSULTANTS, P.A.
 303 SOUTH TOPEKA WICHITA, KS 67202
 316-262-2891 www.ipec.com

Job No. 35-12568-000/001
 Date September 2013
 Designed by CSB
 Drawn by BJS