

DATE: _____
 BY: _____
 CHECKED: _____
 PLAN

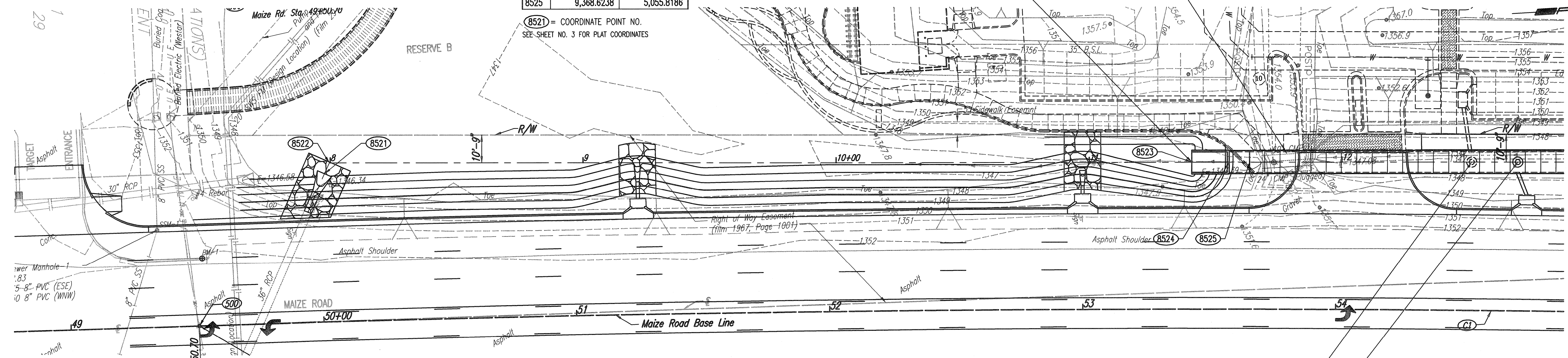
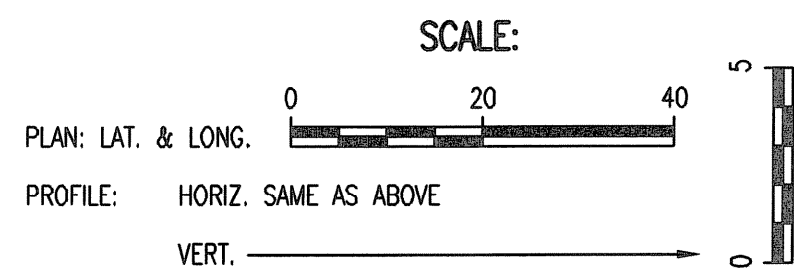
DATE: _____
 BY: _____
 CHECKED: _____
 PROFILE

COORDINATE LIST		
POINT	NORTH	EAST
8521	9,003.2995	5,038.9202
8522	9,005.4115	5,034.7299
8523	9,345.8497	5,054.4963
8524	9,360.5749	5,055.3513
8525	9,368.6238	5,055.8186

(8521) = COORDINATE POINT NO.
 SEE SHEET NO. 3 FOR PLAT COORDINATES

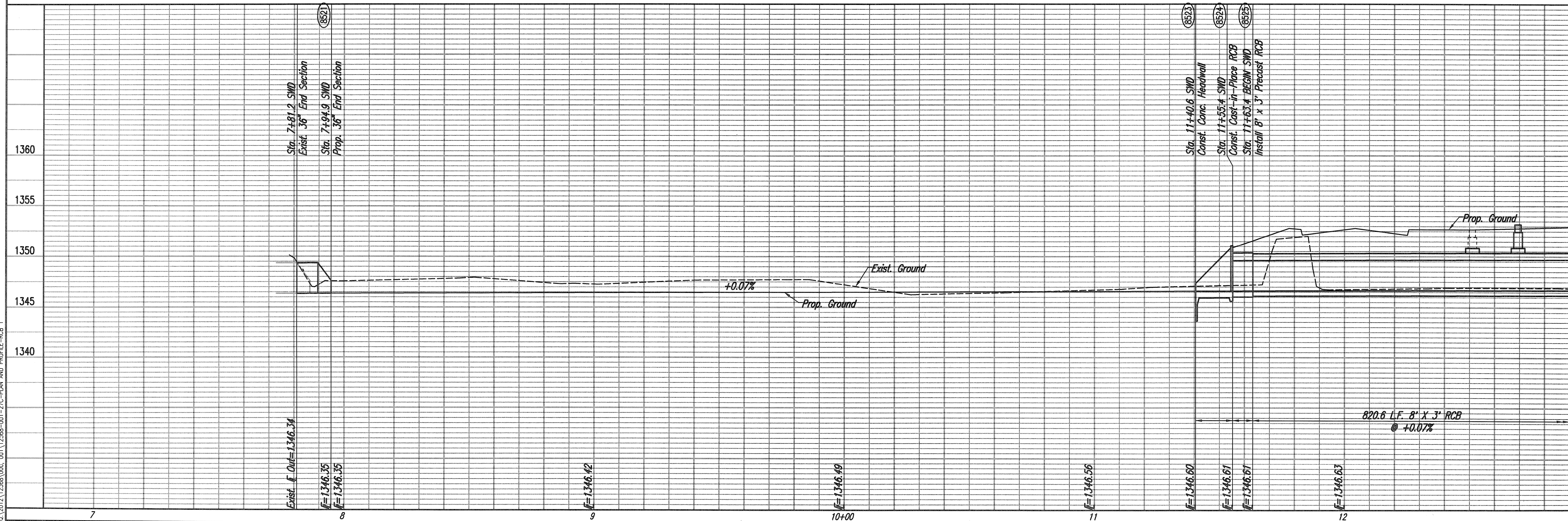
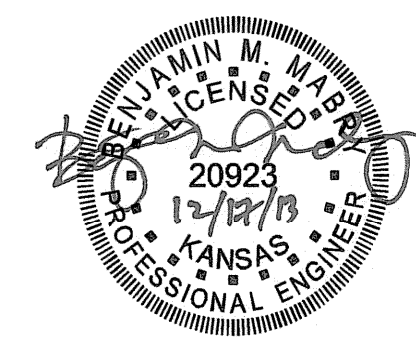
Sta. 11+40.6 to Sta. 11+55.4 @ Prop. RCB
 Const. Cast-in-Place RC Headwall.
 See Sheet No. 32.

Sta. 11+68.5 to Sta. 11+88.4 @ Prop. RCB
 Remove Existing 60" CMP and 24" CMP
 Install 8" x 3" RCB.
 Regrade Gravel Road to Original Condition
 for Access During Construction.



N: 9,456.3823 E: 5,060.9140=
 @ Maize Road Sta. 54+53.19, 58.42' Lt.=
 Sta. 12+51.28 RCB
 Future Manhole No 1 (By Others)
 See Sheet No. 36.

N: 9,474.5392 E: 5,061,9682=
 @ Maize Road Sta. 54+71.28, 58.62' Lt.=
 Sta. 12+69.47 RCB
 Proposed Manhole No. 2
 Top Elev.=1353.2
 Connect to 8" x 3" RCB
 See Sheet No. 36.



MAIZE ROAD PAVING AND DRAINAGE IMPROVEMENTS
 LOT 1, BLOCK 1 NEWMARKET V ADDITION
8" X 3" REINFORCED CONC. BOX
 STA. 7+81.2 TO STA. 12+50.0
 GARY JANZEN, P.E. - CITY ENGINEER
 CITY OF WICHITA PROJ. NO. 472-84607

PROFESSIONAL ENGINEERING CONSULTANTS, P.A.
 303 SOUTH TOPPERA WICHITA, KS 67202
 316-262-2891 www.pccr.com

DESIGNED BY: BMM, JAG
 DRAWN BY: BUS

Job No. 35-12568-000/001
 Date September 2013

Sheet 27 of 65

Sheet 12-05-2013 9:26:06 AM by BUS
 Plot Scale 1:20 12-17-2013 1:36:07 PM by BUS
 C:\2012\12568\000_001\12568-001-27C-PLAN AND PROFILE-RCB 1